

**SCREENING REPORT FOR AN ENVIRONMENTAL AUTHORIZATION AS
REQUIRED BY THE 2014 EIA REGULATIONS – PROPOSED SITE
ENVIRONMENTAL SENSITIVITY**

EIA Reference number: N/A

Project name: Harmony West Wits Reclamation Project

Project title: Harmony West Wits Reclamation Project

Date screening report generated: 15/08/2025 13:20:33

Applicant: Harmony Gold Mining Company

Compiler: John von Mayer

Compiler signature:



Application Category: Mining|Beneficiation|Mineral

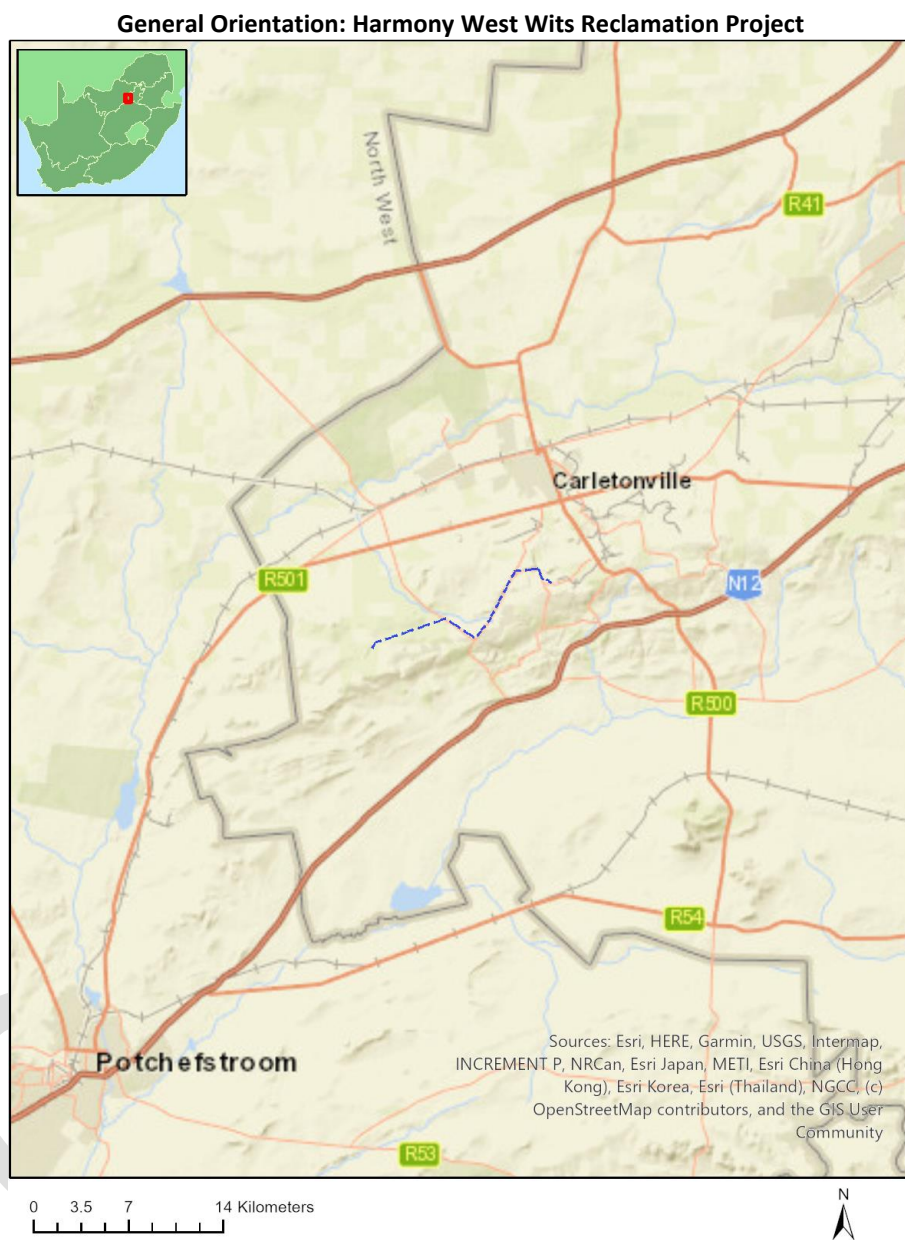
OFFICIAL

Table of Contents

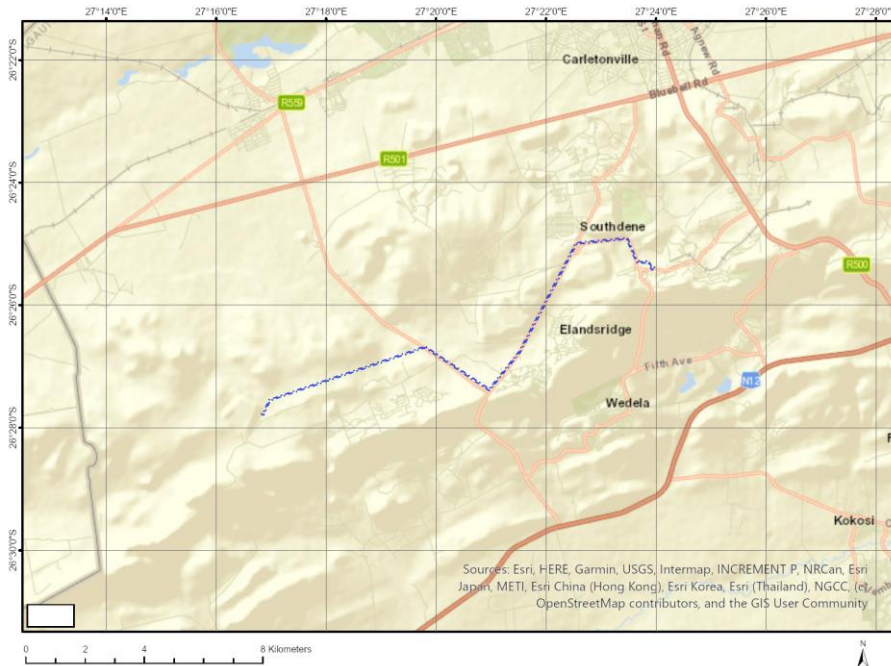
Proposed Project Location	3
Orientation map 1: General location	3
Map of proposed site and relevant area(s)	4
Cadastral details of the proposed site	4
Wind and Solar developments with an approved Environmental Authorisation or applications under consideration within 30 km of the proposed area	5
Environmental Management Frameworks relevant to the application	6
Environmental screening results and assessment outcomes	6
Relevant development incentives, restrictions, exclusions or prohibitions	6
Proposed Development Area Environmental Sensitivity	7
Specialist assessments identified	7
Results of the environmental sensitivity of the proposed area	9
MAP OF RELATIVE AGRICULTURE THEME SENSITIVITY	9
MAP OF RELATIVE ANIMAL SPECIES THEME SENSITIVITY	10
MAP OF RELATIVE AQUATIC BIODIVERSITY THEME SENSITIVITY	11
MAP OF RELATIVE ARCHAEOLOGICAL AND CULTURAL HERITAGE THEME SENSITIVITY	12
MAP OF RELATIVE CIVIL AVIATION THEME SENSITIVITY	13
MAP OF RELATIVE DEFENCE THEME SENSITIVITY	14
MAP OF RELATIVE PALEONTOLOGY THEME SENSITIVITY	15
MAP OF RELATIVE PLANT SPECIES THEME SENSITIVITY	16
MAP OF RELATIVE TERRESTRIAL BIODIVERSITY THEME SENSITIVITY	17

Proposed Project Location

Orientation map 1: General location



Map of proposed site and relevant area(s)



Cadastral details of the proposed site

Property details:

No	Farm Name	Farm/ Erf No	Portion	Latitude	Longitude	Property Type
1	DEELKRAAL	142	0	26°29'40.33S	27°18'22.06E	Farm
2	DOORNFONTEIN	118	0	26°26'5.46S	27°19'5.74E	Farm
3	BUFFELSDOORN	143	0	26°29'6.63S	27°22'2.75E	Farm
4	KLEINFONTEIN	141	0	26°27'56.69S	27°15'8.6E	Farm
5	BLYVOORUITZICHT	116	0	26°24'12.17S	27°23'27.22E	Farm
6	BLYVOORUITZICHT	116	47	26°25'18.1S	27°22'23.83E	Farm Portion
7	BLYVOORUITZICHT	116	93	26°25'28.41S	27°22'37.75E	Farm Portion
8	BLYVOORUITZICHT	116	83	26°25'16.4S	27°22'24.15E	Farm Portion
9	BLYVOORUITZICHT	116	1	26°24'51.55S	27°21'49.76E	Farm Portion
10	BLYVOORUITZICHT	116	66	26°24'6.7S	27°23'21.05E	Farm Portion
11	BLYVOORUITZICHT	116	70	26°24'1.46S	27°22'24.05E	Farm Portion
12	BLYVOORUITZICHT	116	3	26°25'15.98S	27°24'7.41E	Farm Portion
13	DOORNFONTEIN	118	1	26°26'37.25S	27°17'35.68E	Farm Portion
14	DOORNFONTEIN	118	11	26°26'53.67S	27°16'52.71E	Farm Portion
15	DOORNFONTEIN	118	28	26°26'24.6S	27°18'29.4E	Farm Portion
16	DOORNFONTEIN	118	27	26°25'52.35S	27°19'13.67E	Farm Portion
17	DOORNFONTEIN	118	25	26°26'12S	27°21'3.97E	Farm Portion
18	KLEINFONTEIN	141	6	26°27'55.72S	27°16'53.39E	Farm Portion
19	DEELKRAAL	142	11	26°27'15.43S	27°19'58.53E	Farm Portion
20	BUFFELSDOORN	143	8	26°27'40.24S	27°20'36.37E	Farm Portion
21	BUFFELSDOORN	143	13	26°26'31.19S	27°21'45.67E	Farm Portion
22	BUFFELSDOORN	143	7	26°27'0.22S	27°21'9.15E	Farm Portion
23	BUFFELSDOORN	143	31	26°26'45.2S	27°21'29.75E	Farm Portion
24	BUFFELSDOORN	143	35	26°27'42.28S	27°21'27.43E	Farm Portion
25	BUFFELSDOORN	143	1	26°27'52.57S	27°21'5.92E	Farm Portion

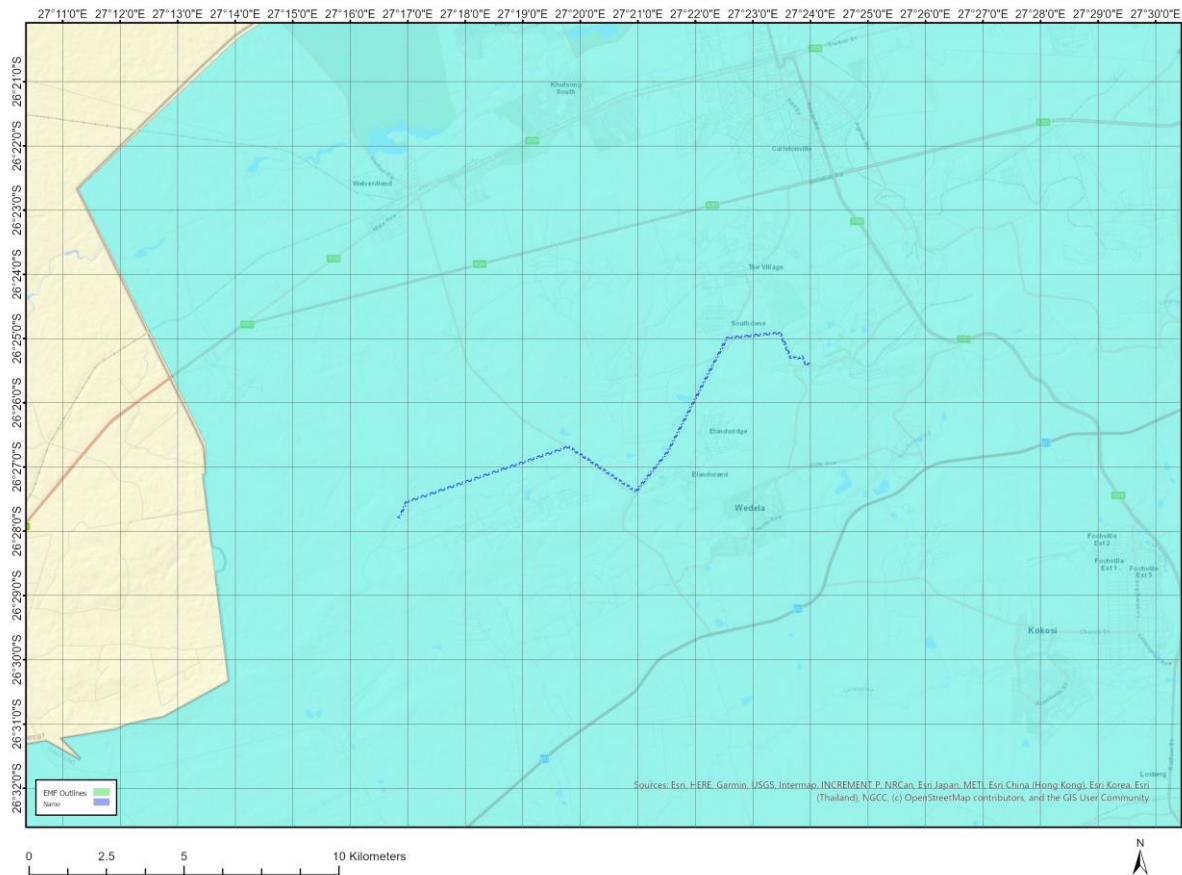
Development footprint¹ vertices:
 No development footprint(s) specified.

Wind and Solar developments with an approved Environmental Authorisation or applications under consideration within 30 km of the proposed area

No	EIA Reference No	Classification	Status of application	Distance from proposed area (km)
1	14/12/16/3/3/2/2351	Solar PV	Approved	20
2	14/12/16/3/3/2/2312	Solar PV	Approved	0
3	14/12/16/3/3/1/2961	Solar PV	Approved	23.6
4	14/12/16/3/3/2/2313	Solar PV	Approved	0
5	14/12/16/3/3/2/2354	Solar PV	Approved	20
6	14/12/16/3/3/2/2385	Wind	Approved	11.6
7	14/12/16/3/3/2/2311	Solar PV	Approved	0
8	14/12/16/3/3/2/919	Solar PV	Approved	17.3
9	14/12/16/3/3/2/2344	Solar PV	Approved	14.7
10	14/12/16/3/3/2/2342	Solar PV	Approved	16.6
11	14/12/16/3/3/2/2353	Solar PV	Approved	20
12	14/12/16/3/3/2/2293	Solar PV	Approved	9.2
13	14/12/16/3/3/1/2959	Solar PV	Approved	24.3
14	14/12/16/3/3/2/2295	Solar PV	Approved	14.6
15	14/12/16/3/3/2/2310	Solar PV	Approved	0
16	14/12/16/3/3/2/2294	Solar PV	Approved	9.2
17	14/12/16/3/3/2/2343	Solar PV	Approved	15.9
18	14/12/16/3/3/2/2375	Solar PV	Approved	8.9
19	14/12/16/3/3/2/2341	Solar PV	Approved	16.5
20	14/12/16/3/3/2/2352	Solar PV	Approved	20
21	14/12/16/3/3/1/2960	Solar PV	Approved	25.2
22	14/12/16/3/3/2/2314	Solar PV	Approved	0

¹ “development footprint”, means the area within the site on which the development will take place and includes all ancillary developments for example roads, power lines, boundary walls, paving etc. which require vegetation clearance or which will be disturbed and for which the application has been submitted.

Environmental Management Frameworks relevant to the application



Environmental Management Framework	LINK
Gauteng EMF	https://screening.environment.gov.za/ScreeningDownloads/EMF/GPEMF_2021_Gazette_and_summary.pdf

Environmental screening results and assessment outcomes

The following sections contain a summary of any development incentives, restrictions, exclusions or prohibitions that apply to the proposed development site as well as the most environmental sensitive features on the site based on the site sensitivity screening results for the application classification that was selected. The application classification selected for this report is:

Mining | Beneficiation | Mineral.

Relevant development incentives, restrictions, exclusions or prohibitions

The following development incentives, restrictions, exclusions or prohibitions and their implications that apply to this site are indicated below.

Incentive, restriction or prohibition	Implication
Strategic Transmission Corridor-Central corridor	https://screening.environment.gov.za/ScreeningDownloads/Developmen

	tZones/Combined_EGI.pdf
Strategic Gas Pipeline Corridors-Phase 3: Richards Bay to Gauteng	https://screening.environment.gov.za/ScreeningDownloads/DevelopmentZones/Combined_GAS.pdf
Gauteng EMF-Urban development zone 1	https://screening.environment.gov.za/ScreeningDownloads/DevelopmentZones/Zone1_2021.pdf
Main Electricity Distribution Substation	https://screening.environment.gov.za/ScreeningDownloads/DevelopmentZones/Distribution_Transmission.pdf

Proposed Development Area Environmental Sensitivity

The following summary of the development site environmental sensitivities is identified. Only the highest environmental sensitivity is indicated. The footprint environmental sensitivities for the proposed development footprint as identified, are indicative only and must be verified on site by a suitably qualified person before the specialist assessments identified below can be confirmed.

Theme	Very High sensitivity	High sensitivity	Medium sensitivity	Low sensitivity
Agriculture Theme		X		
Animal Species Theme			X	
Aquatic Biodiversity Theme	X			
Archaeological and Cultural Heritage Theme				X
Civil Aviation Theme		X		
Defence Theme				X
Paleontology Theme		X		
Plant Species Theme			X	
Terrestrial Biodiversity Theme	X			

Specialist assessments identified

Based on the selected classification, and the known impacts associated with the proposed development, the following list of specialist assessments have been identified for inclusion in the assessment report. It is the responsibility of the EAP to confirm this list and to motivate in the assessment report, the reason for not including any of the identified specialist study including the provision of photographic evidence of the site situation.

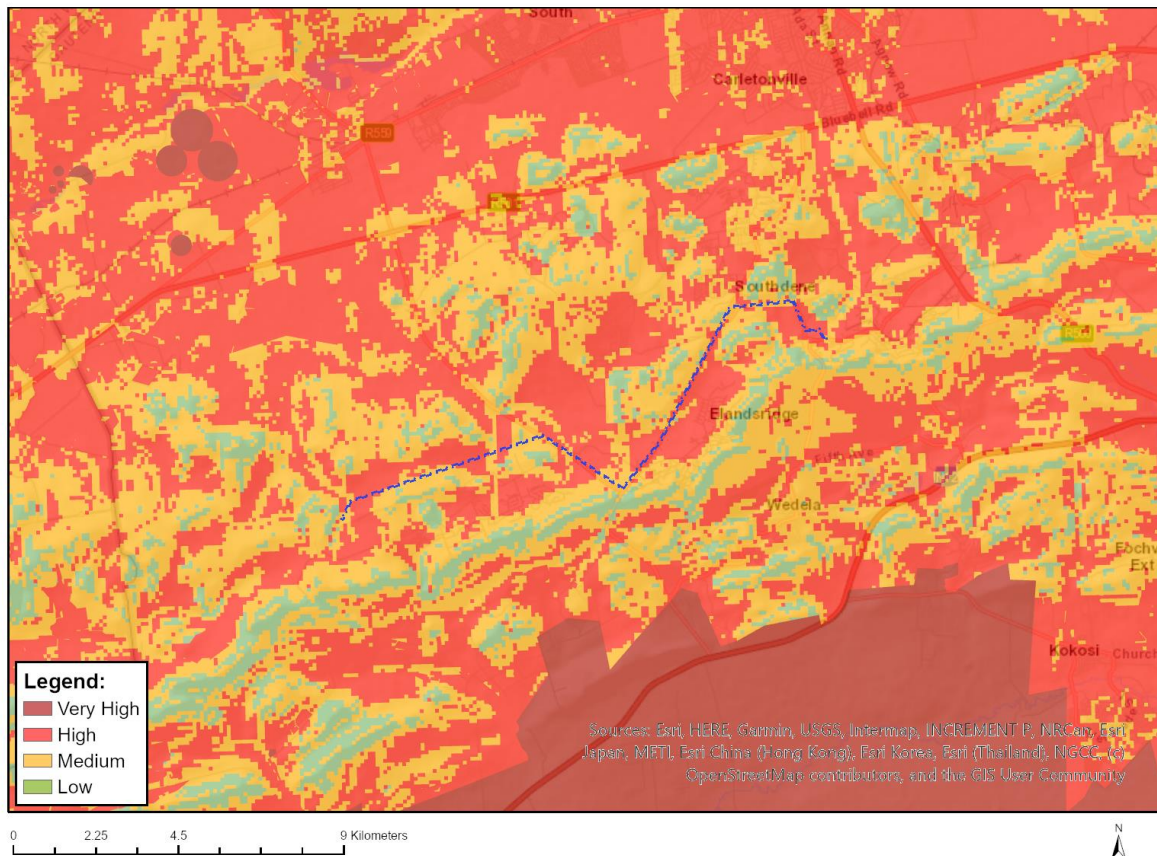
No	Specialist assessment	Assessment Protocol
1	Agricultural Impact Assessment	https://screening.environment.gov.za/ScreeningDownloads/AssessmentProtocols/Gazetted_General_Agriculture_Assessment_Protocols.pdf
2	Archaeological and Cultural Heritage Impact Assessment	https://screening.environment.gov.za/ScreeningDownloads/AssessmentProtocols/GuidanceforHIA.pdf
3	Palaeontology Impact Assessment	https://screening.environment.gov.za/ScreeningDownloads/AssessmentProtocols/GuidanceforPIA.pdf
4	Terrestrial Biodiversity Impact Assessment	https://screening.environment.gov.za/ScreeningDownloads/AssessmentProtocols/Gazetted_Terrestrial_Biodiversity_Assessment_Protocols.pdf
5	Aquatic Biodiversity Impact Assessment	https://screening.environment.gov.za/ScreeningDownloads/AssessmentProtocols/Gazetted_Aquatic_Biodiversity_Assessment_Pr

		otocols.pdf
6	Hydrology Assessment	https://screening.environment.gov.za/ScreeningDownloads/AssessmentProtocols/Gazetted General Requirement Assessment Protocols.pdf
7	Noise Impact Assessment	https://screening.environment.gov.za/ScreeningDownloads/AssessmentProtocols/Gazetted Noise Impacts Assessment Protocol.pdf
8	Traffic Impact Assessment	https://screening.environment.gov.za/ScreeningDownloads/AssessmentProtocols/Gazetted General Requirement Assessment Protocols.pdf
9	Geotechnical Assessment	https://screening.environment.gov.za/ScreeningDownloads/AssessmentProtocols/Gazetted General Requirement Assessment Protocols.pdf
10	Climate Impact Assessment	https://screening.environment.gov.za/ScreeningDownloads/AssessmentProtocols/Gazetted General Requirement Assessment Protocols.pdf
11	Health Impact Assessment	https://screening.environment.gov.za/ScreeningDownloads/AssessmentProtocols/Gazetted General Requirement Assessment Protocols.pdf
12	Socio-Economic Assessment	https://screening.environment.gov.za/ScreeningDownloads/AssessmentProtocols/Gazetted General Requirement Assessment Protocols.pdf
13	Ambient Air Quality Impact Assessment	https://screening.environment.gov.za/ScreeningDownloads/AssessmentProtocols/Gazetted General Requirement Assessment Protocols.pdf
14	Air Quality Impact Assessment	https://screening.environment.gov.za/ScreeningDownloads/AssessmentProtocols/Gazetted General Requirement Assessment Protocols.pdf
15	Plant Species Assessment	https://screening.environment.gov.za/ScreeningDownloads/AssessmentProtocols/Gazetted Plant Species Assessment Protocols.pdf
16	Animal Species Assessment	https://screening.environment.gov.za/ScreeningDownloads/AssessmentProtocols/Gazetted Animal Species Assessment Protocols.pdf

Results of the environmental sensitivity of the proposed area.

The following section represents the results of the screening for environmental sensitivity of the proposed site for relevant environmental themes associated with the project classification. It is the duty of the EAP to ensure that the environmental themes provided by the screening tool are comprehensive and complete for the project. Refer to the disclaimer.

MAP OF RELATIVE AGRICULTURE THEME SENSITIVITY

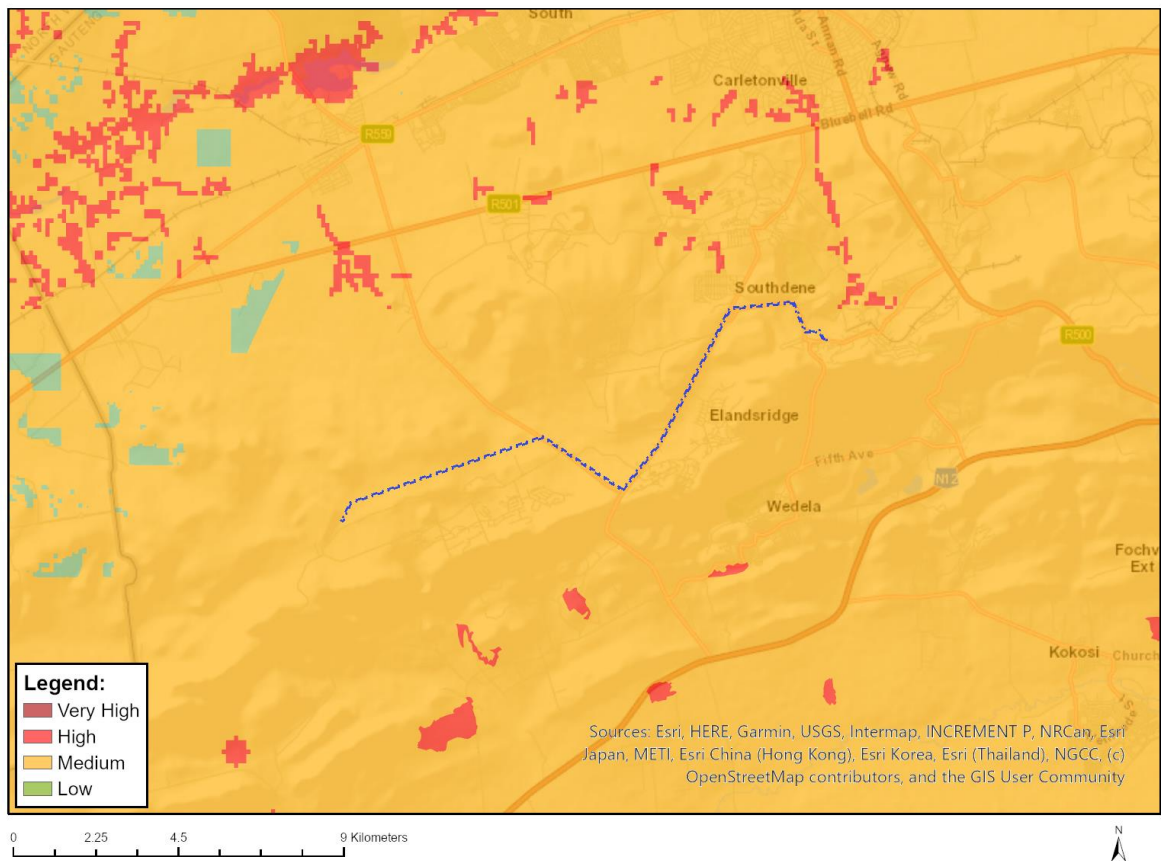


Very High sensitivity	High sensitivity	Medium sensitivity	Low sensitivity
	X		

Sensitivity Features:

Sensitivity	Feature(s)
High	Rainfed Annual Crop Cultivation / Planted Pastures
High	08. Moderate
High	09. Moderate-High
Low	05. Low
Medium	06. Low-Moderate
Medium	07. Low-Moderate

MAP OF RELATIVE ANIMAL SPECIES THEME SENSITIVITY



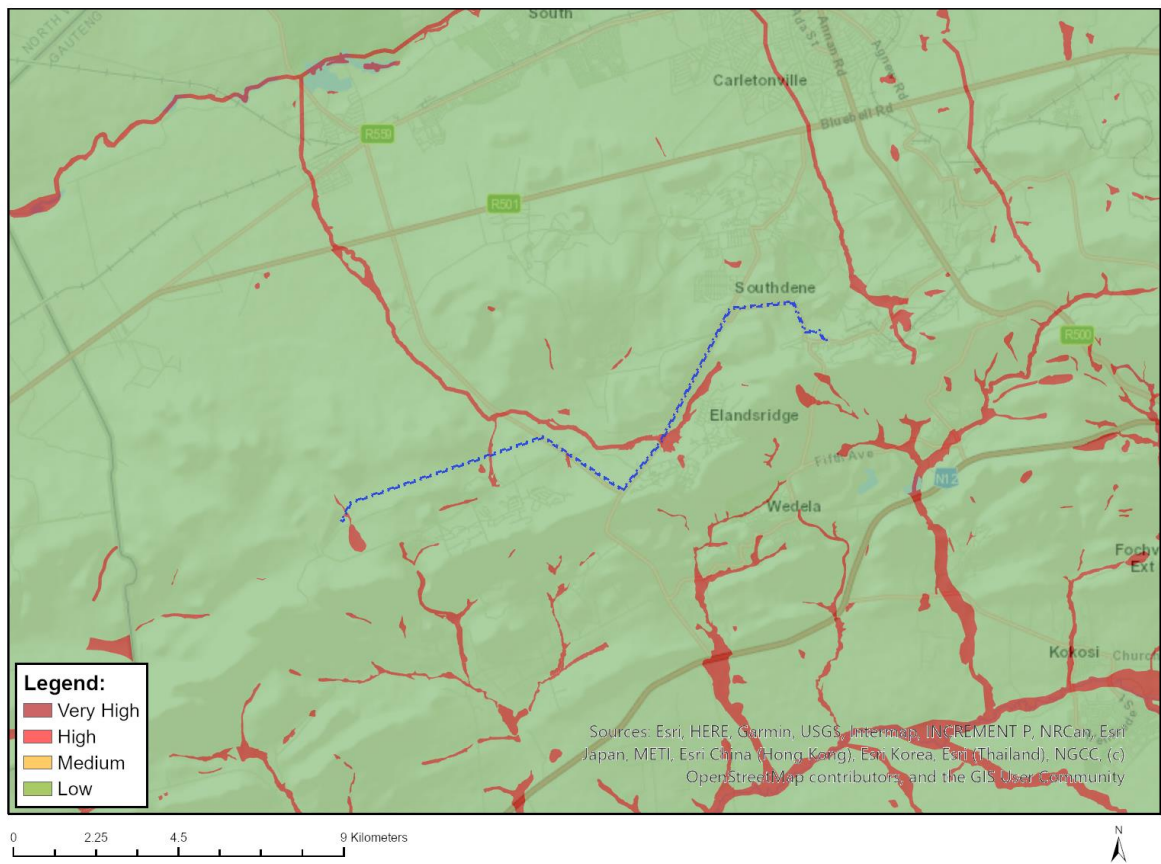
Where only a sensitive plant unique number or sensitive animal unique number is provided in the screening report and an assessment is required, the environmental assessment practitioner (EAP) or specialist is required to email SANBI at eiadatarequests@sanbi.org.za listing all sensitive species with their unique identifiers for which information is required. The name has been withheld as the species may be prone to illegal harvesting and must be protected. SANBI will release the actual species name after the details of the EAP or specialist have been documented.

Very High sensitivity	High sensitivity	Medium sensitivity	Low sensitivity
		X	

Sensitivity Features:

Sensitivity	Feature(s)
Medium	Aves-Tyto capensis
Medium	Aves-Eupodotis senegalensis
Medium	Insecta-Lepidochrysops praeterita
Medium	Insecta-Lepidochrysops procera
Medium	Mammalia-Crocidura maquassiensis
Medium	Mammalia-Hydrictis maculicollis
Medium	Invertebrate-Clonia uvarovi

MAP OF RELATIVE AQUATIC BIODIVERSITY THEME SENSITIVITY

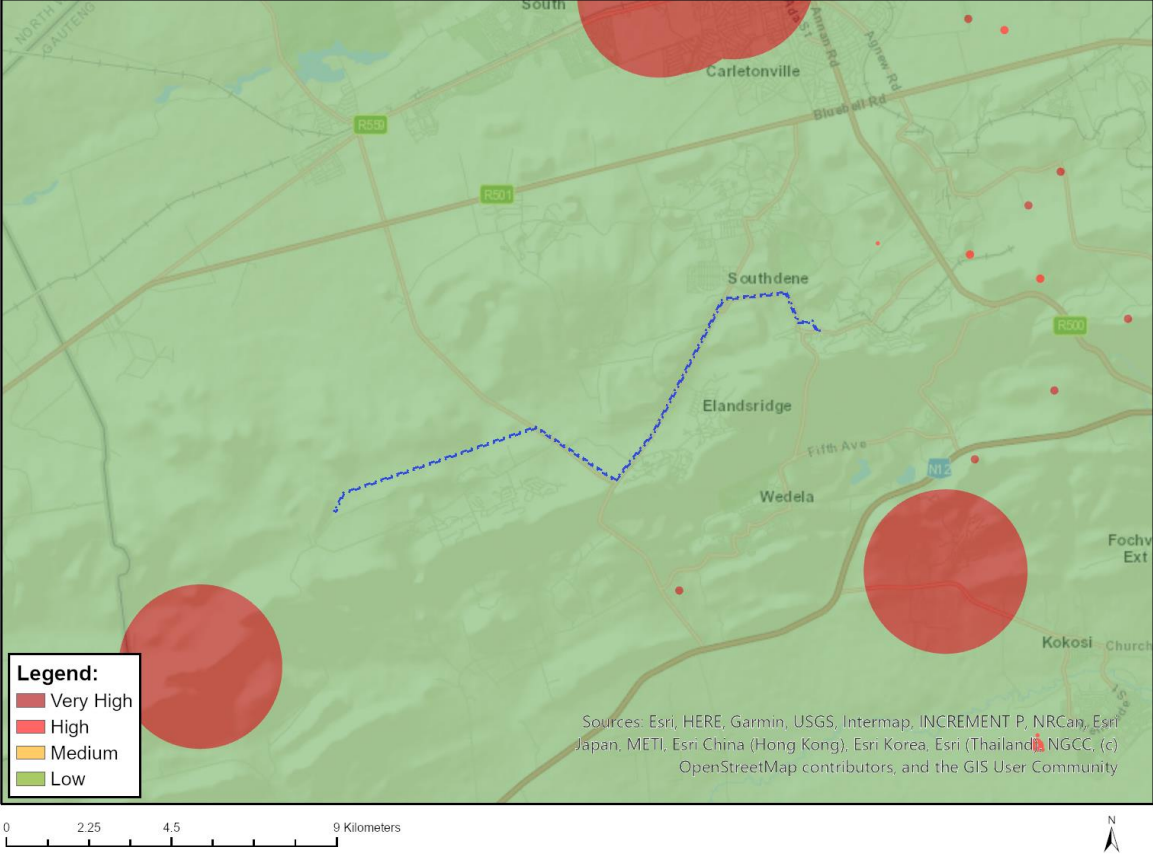


Very High sensitivity	High sensitivity	Medium sensitivity	Low sensitivity
X			

Sensitivity Features:

Sensitivity	Feature(s)
Low	Low Sensitivity
Very High	Wetlands_Channelled valley-bottom
Very High	Wetlands_Unchannelled valley-bottom
Very High	Rivers

MAP OF RELATIVE ARCHAEOLOGICAL AND CULTURAL HERITAGE THEME SENSITIVITY

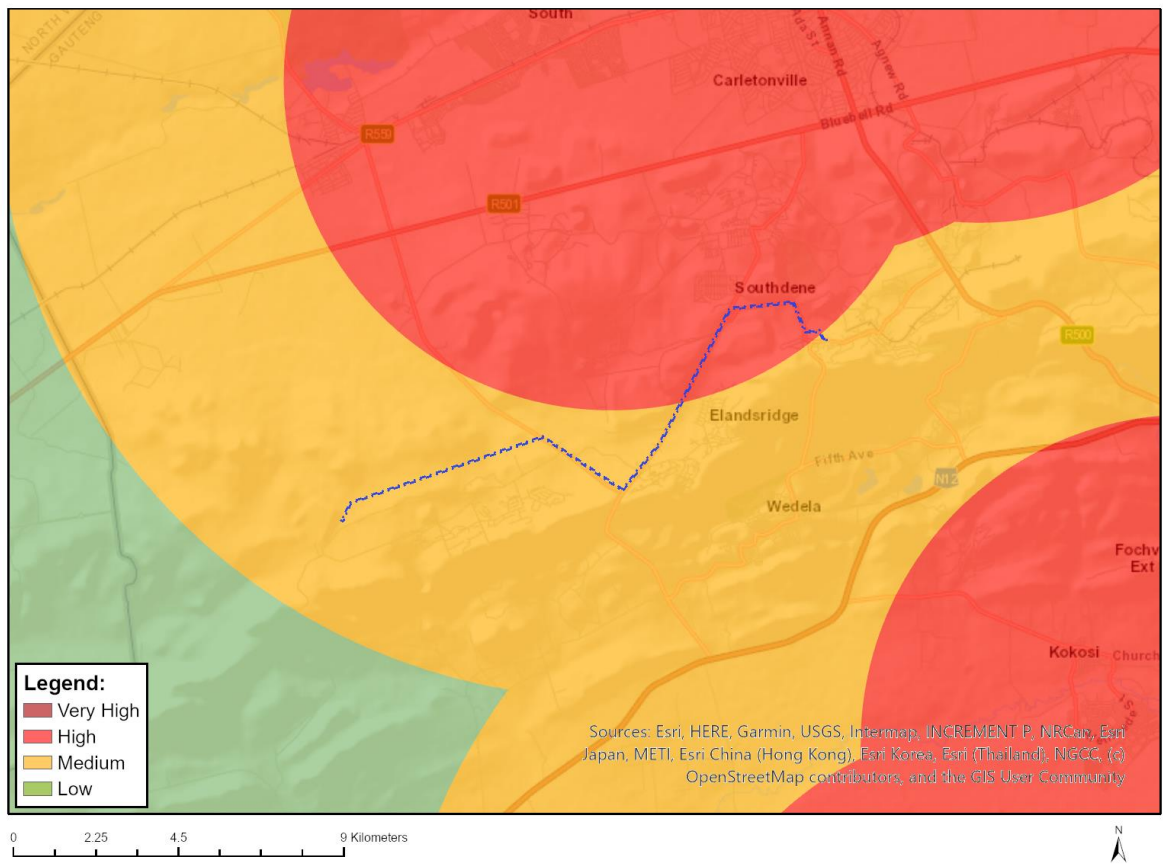


Very High sensitivity	High sensitivity	Medium sensitivity	Low sensitivity
			X

Sensitivity Features:

Sensitivity	Feature(s)
Low	Low Sensitivity

MAP OF RELATIVE CIVIL AVIATION THEME SENSITIVITY

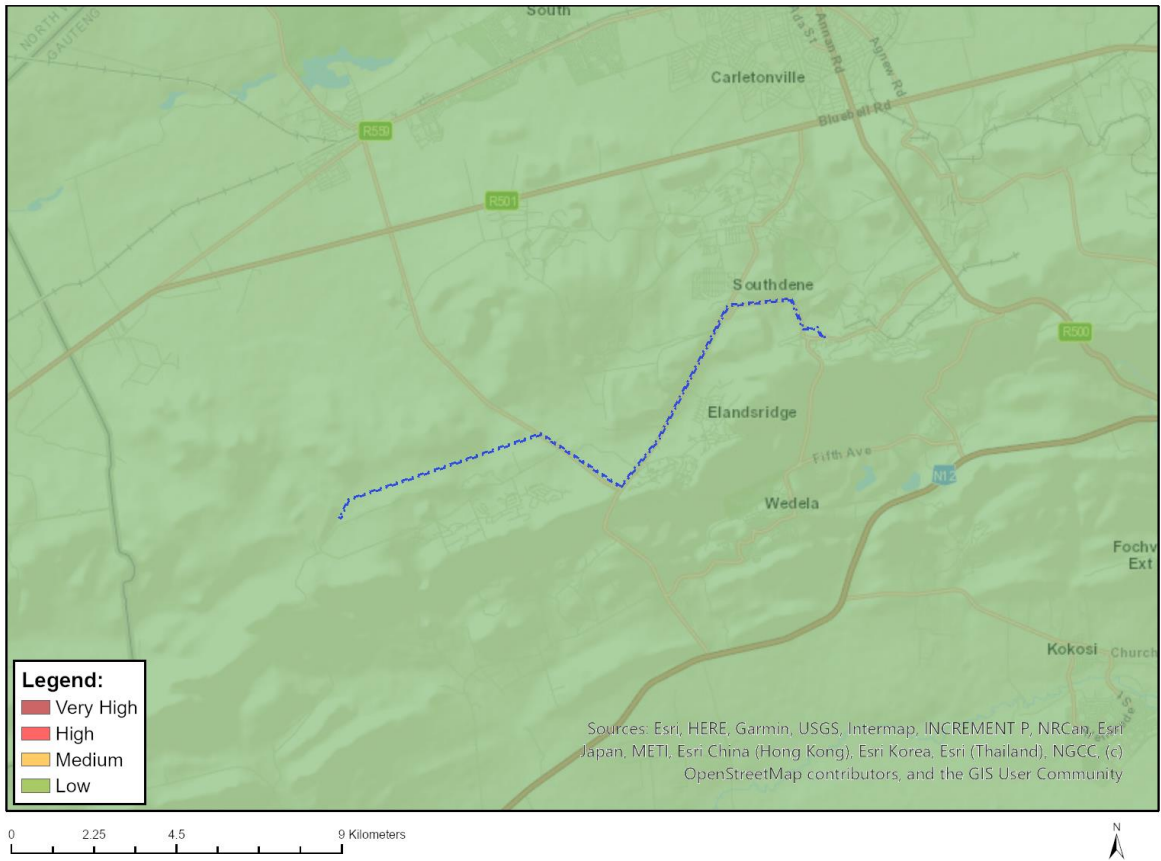


Very High sensitivity	High sensitivity	Medium sensitivity	Low sensitivity
	X		

Sensitivity Features:

Sensitivity	Feature(s)
High	Within 8 km of other civil aviation aerodrome
Medium	Between 8 and 15 km of other civil aviation aerodrome

MAP OF RELATIVE DEFENCE THEME SENSITIVITY

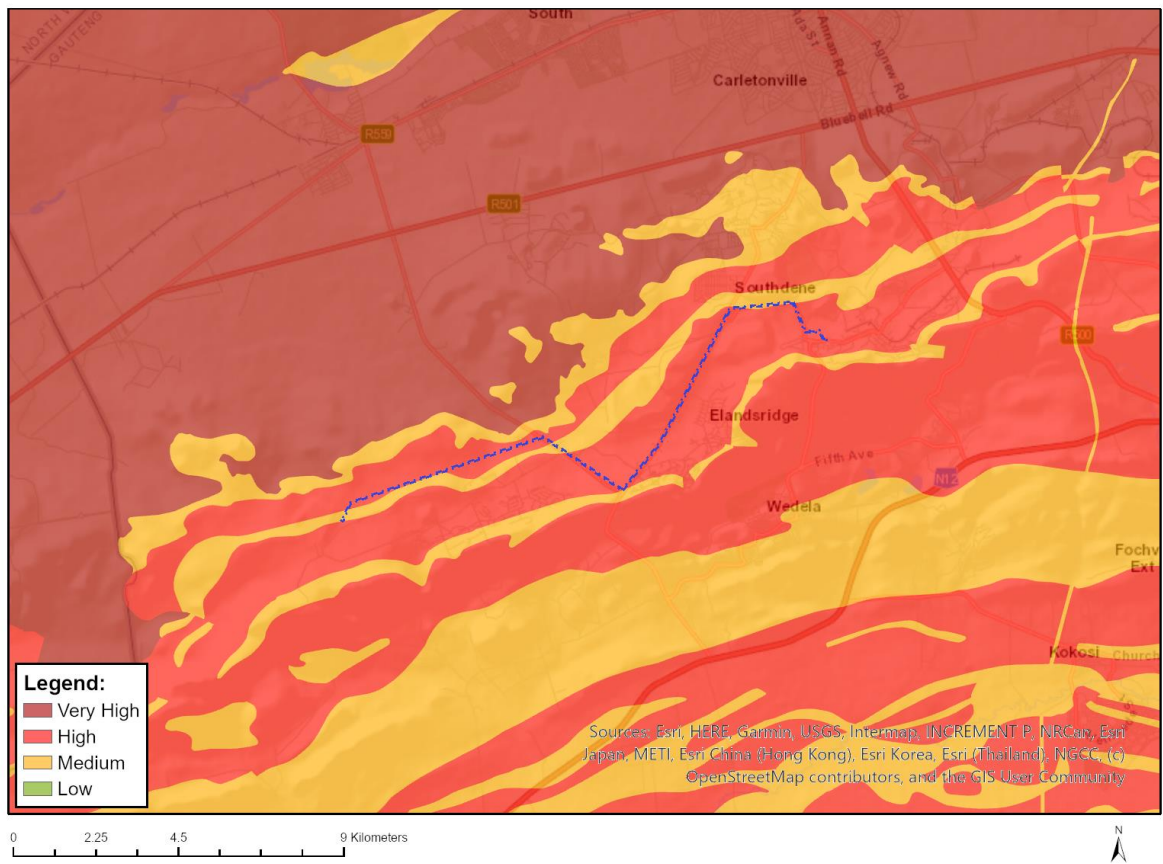


Very High sensitivity	High sensitivity	Medium sensitivity	Low sensitivity
			X

Sensitivity Features:

Sensitivity	Feature(s)
Low	Low Sensitivity

MAP OF RELATIVE PALEONTOLOGY THEME SENSITIVITY

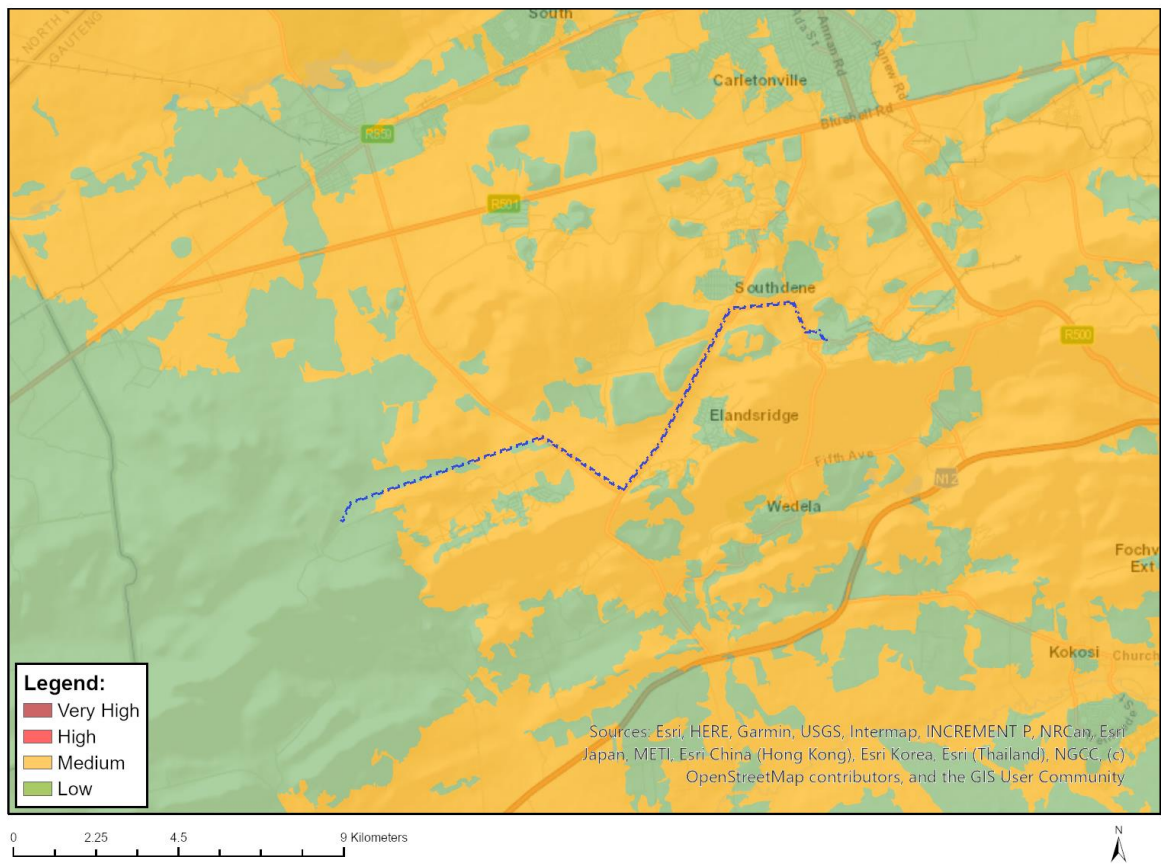


Very High sensitivity	High sensitivity	Medium sensitivity	Low sensitivity
	X		

Sensitivity Features:

Sensitivity	Feature(s)
High	Features with a High paleontological sensitivity
Medium	Features with a Medium paleontological sensitivity

MAP OF RELATIVE PLANT SPECIES THEME SENSITIVITY



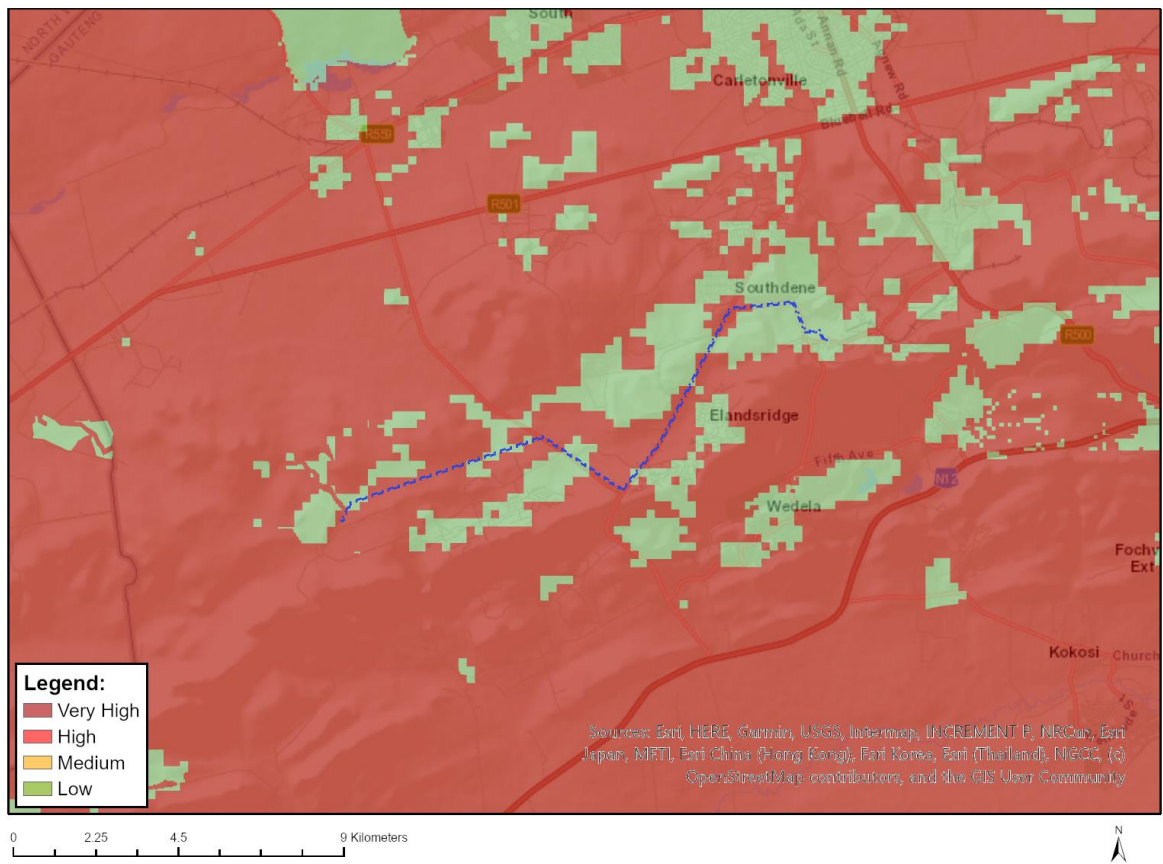
Where only a sensitive plant unique number or sensitive animal unique number is provided in the screening report and an assessment is required, the environmental assessment practitioner (EAP) or specialist is required to email SANBI at eiadatarequests@sanbi.org.za listing all sensitive species with their unique identifiers for which information is required. The name has been withheld as the species may be prone to illegal harvesting and must be protected. SANBI will release the actual species name after the details of the EAP or specialist have been documented.

Very High sensitivity	High sensitivity	Medium sensitivity	Low sensitivity
		X	

Sensitivity Features:

Sensitivity	Feature(s)
Low	Low Sensitivity
Medium	Khadia beswickii
Medium	Sensitive species 1248

MAP OF RELATIVE TERRESTRIAL BIODIVERSITY THEME SENSITIVITY



Very High sensitivity	High sensitivity	Medium sensitivity	Low sensitivity
X			

Sensitivity Features:

Sensitivity	Feature(s)
Low	Low Sensitivity
Very High	CBA 1
Very High	ESA 1
Very High	National Protected Area Expansion Strategy (NPAES)

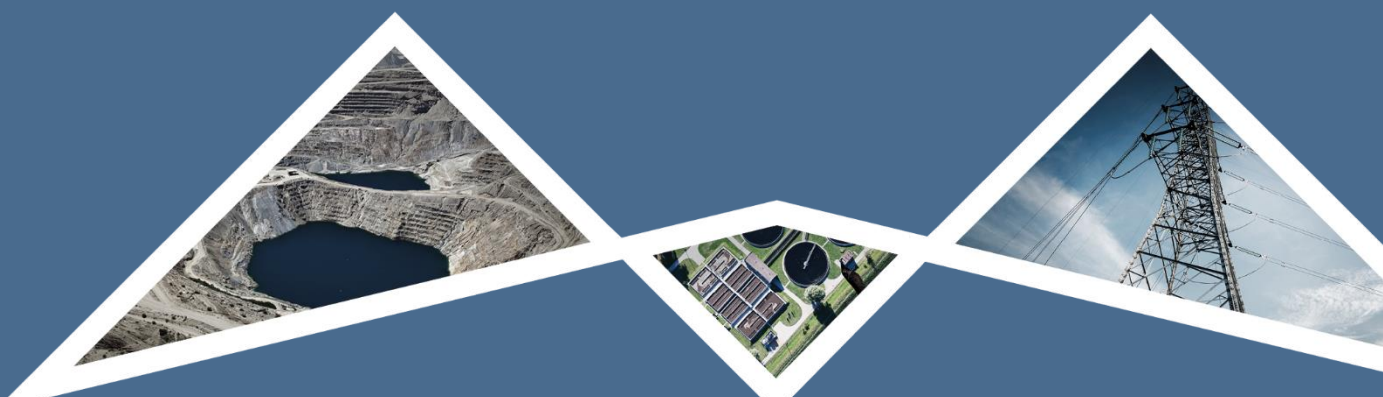


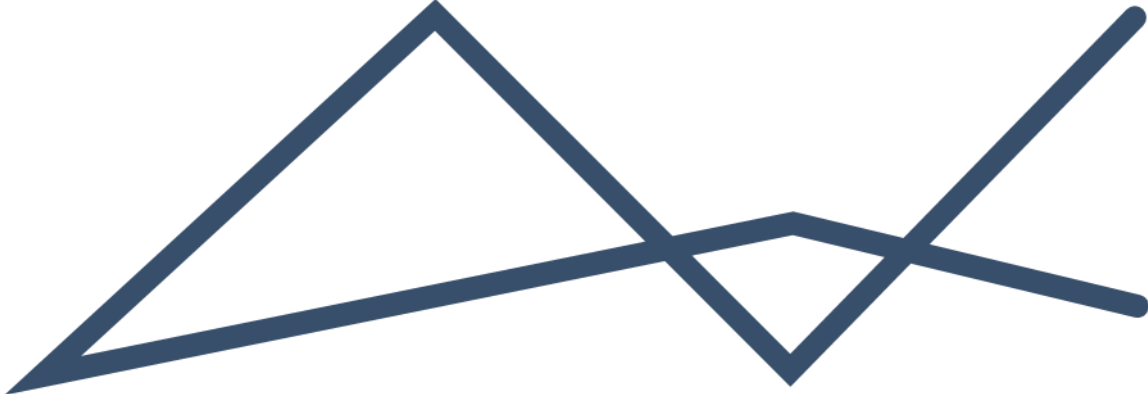
ENVIRONMENTAL
IMPACT
MANAGEMENT
SERVICES

T 011 789 7170 E info@eims.co.za W www.eims.co.za

SITE SENSITIVITY AND VERIFICATION REPORT

HARMONY WEST WITS RECLAMATION AND DEPOSITION PROJECT





DOCUMENT DETAILS

EIMS REFERENCE: 1716
DOCUMENT TITLE: SITE SENSITIVITY AND VERIFICATION REPORT

DOCUMENT CONTROL

	NAME	SIGNATURE	DATE
COMPILED:	John von Mayer	Sent Electronically	2026/02/09
CHECKED:	Liam Whitlow	Sent Electronically	2026/02/09
AUTHORIZED:	Liam Whitlow	Sent Electronically	2026/02/09

REVISION AND AMENDMENTS

REVISION DATE:	REV #	DESCRIPTION
2026/02/09	ORIGINAL DOCUMENT	SITE SENSITIVITY AND VERIFICATION REPORT



Table of Contents

1	Scope and Purpose	1
2	Project Background.....	2
2.1	Project Aspects.....	2
2.2	Site Locality and layout	3
2.3	National Screening Tool Assessment	2
3	Site Assessment	2
3.1	Gradient	3
3.2	Sensitive Areas	3
3.3	Vegetation.....	4
3.4	Land Cover/ Use Description.....	4
4	Verification Findings and Motivation.....	9

List of Figures

Figure 1:	Site locality map.....	1
Figure 2:	View from a dirt road looking north towards the Deelkraal II TSF site	6
Figure 3:	View west along access road – the Deelkraal II TSF will be located on either side of this road.....	6
Figure 4:	View south from access road across Deelkraal II TSF site.	6
Figure 5:	View west along access road across the proposed Deelkraal II TSF site.	6
Figure 6:	View north of the southern side slope of the existing Deelkraal TSF, adjacent to the proposed Deelkraal II TSF.....	7
Figure 7:	View northeast of the southern side slope of the existing Deelkraal TSF, adjacent to the proposed Deelkraal II TSF.....	7
Figure 8:	View south from the northern-most tip of the Deelkraal II – approximate location of pump station....	7
Figure 9:	View west from the northern-most tip of the Deelkraal II – approximate location of pump station	7
Figure 10:	graveyard located near one the pipeline routes	8
Figure 11:	View east along existing access road along proposed pipeline routes.....	8
Figure 12:	View east along proposed pipeline routes towards Kusasaletu plant area.....	8
Figure 13:	View northeast from existing road along proposed pipeline route.	8

List of Tables

Table 1:	Project description	2
Table 2:	Screening Tool Report- Proposed development area environmental sensitivity.	2
Table 3:	Assessment for specialist studies and motivation.	9



Appendices

Appendix 1: DFFE Screening Tool Report



1 SCOPE AND PURPOSE

Regulation 16(1)(b)(v) of the Environmental Impact Assessment Regulations (GNR 982 promulgated under the National Environmental Management Act (Act 107 of 1998-NEMA)), requires that a Screening Report generated by the national web-based environmental screening tool for the specific site and activity must accompany any application for Environmental Authorization.

The Screening Report identifies preliminary development incentives, restrictions, exclusions or prohibitions that apply to the proposed development site as well as the most environmentally sensitive features on the site based on the site sensitivity screening. On the basis of the sensitivities identified in the site sensitivity screening, a list of preliminary specialist studies required to be considered in the Impact Assessment process are provided.

Prior to commencing with a specialist assessment identified in the Screening Report, the current use of the land and the environmental sensitivity of the site, must be confirmed by undertaking a site sensitivity verification. The site sensitivity verification must be undertaken by an environmental assessment practitioner or a specialist. The site sensitivity verification must be undertaken through the use of:

- a) a desk top analysis, using satellite imagery;*
- b) a preliminary on-site inspection; and*
- c) any other available and relevant information.*

This Site Sensitivity and Verification Report (SSVR) is a record of the outcome of the site sensitivity verification in compliance with the requirements of the procedures for the assessment and minimum criteria for reporting on identified environmental themes in terms of Sections 24(5)(a) and (h) and 44 of the NEMA. The SSVR aims to:

- a) confirm or disputes the current use of the land and the environmental sensitivity as identified by the screening tool, such as new developments or infrastructure, the change in vegetation cover or status etc.;*
- b) contain motivation and evidence (e.g. photographs) of either the verified or different use of the land and environmental sensitivity; and*
- c) be submitted together with the relevant assessment report prepared in accordance with the requirements of the Environmental Impact Assessment Regulations (EIA Regulations).*



2 PROJECT BACKGROUND

2.1 PROJECT ASPECTS

Randfontein Estates Limited (a subsidiary of Harmony Gold Mining Company) (hereafter referred to as the applicant) has appointed Environmental Impact Management Services (Pty) Ltd (EIMS) as the Environmental Assessment Practitioner (EAP) to assist with undertaking the required authorisation processes (including the statutory public participation), and to compile and submit the required documentation in support of application for a proposed new West Wits Reclamation and Deposition Project. The West Wits project consists of the proposed Deelkraal II Tailings Storage Facility (TSF) and associated infrastructure on a site located approximately 13km southwest of Carltonville in the Merafong City Local Municipality, West Rand District Municipality, Gauteng Province.

The Applicant requires additional deposition capacity for West Wits region's operations. The applicant plans on constructing the Deelkraal 2 Tailings Storage Facility (TSF) to cater for the additional future capacity. This TSF will receive residue from Kusasaletu, and Mponeng plants and will also assist in reclaiming the existing Deelkraal 1 TSF and Kusasaletu TSF for processing at Kusasaletu plant. Additional planned infrastructure includes slurry and return water pipelines, topsoil stockpiles, access roads, pump stations, a return water dam and a power line. Proposed upgrades to the existing Kusasaletu plant are also proposed as part of the project..

Table 1: Project description

		Location (DD MM SS)	
Project Aspect	Details	Latitude	Longitude
1. Deelkraal II TSF, RWD, topsoil stockpiles and laydown areas	New TSF	26°28'10.51"S	27°16'56.07"E
2. Pipelines	Various water and slurry pipelines	<p>New Process Water Pipelines:</p> <p>Process Water Feed to Deelkraal Reclamation Start: 26°27'22.37"S, 27°21'26.43"E Middle: 26°26'37.70"S, 27°19'45.69"E End: 26°27'29.40"S, 27°16'38.62"E</p> <p>Process Water Feed to Kusasaletu Process Water Tank Start: 26°27'30.82"S, 27°16'47.64"E Middle: 26°26'55.21"S, 27°19'34.04"E End: 26°27'22.29"S, 27°21'25.89"E</p> <p>DP2 to North Boundary Dam Start: 26°23'49.17"S, 27°25'58.07"E Middle: 26°24'52.03"S, 27°25'40.75"E End: 26°24'45.98"S, 27°24'25.98"E</p> <p>DP2 feed to Tau Tona RO Plant Start: 26°24'47.62"S, 27°25'44.70"E Middle: 26°24'48.26"S, 27°25'45.71"E End: 26°24'49.05"S, 27°25'46.90"E</p> <p>Nursery Pumpstation #3 to Kusasaletu Process Water Tank Start: 26°24'50.97"S, 27°24'25.62"E Middle: 26°25'41.64"S, 27°22'16.40"E</p>	



		<p>End: 26°27'22.29"S, 27°21'26.33"E</p> <p>2 x Process Water Pipelines Kusasaletu to Savuka White Tanks</p> <p>Start: 26°27'22.27"S, 27°21'26.09"E Middle: 26°26'4.20"S, 27°21'56.26"E End: 26°25'24.05"S, 27°23'59.57"E</p> <p>New Slurry Pipelines:</p> <p>Reclaimed Slurry from Deelkraal 1 to Kusasaletu</p> <p>Start: 26°27'29.83"S, 27°16'39.32"E Middle: 26°26'48.69"S, 27°19'7.82"E End: 26°27'25.95"S, 27°21'37.98"E</p> <p>Kusasaletu Barren Tailings to Deelkraal 2</p> <p>Start: 26°27'24.44"S, 27°21'29.53"E Middle: 26°26'48.69"S, 27°19'7.82"E End: 26°27'51.94"S, 27°17'20.31"E</p> <p>Reclaimed Slurry Kusasaletu TSF - Kusasaletu Plant</p> <p>Start: 26°28'12.30"S, 27°21'45.85"E Middle: 26°27'44.69"S, 27°21'46.67"E End: 26°27'22.17"S, 27°21'39.17"E</p> <p>Savuka Plant to DF5 TSF</p> <p>Start: 26°25'17.30"S, 27°23'51.83"E Middle: 26°24'56.58"S, 27°24'13.22"E End: 26°24'12.61"S, 27°24'28.45"E</p> <p>Slurry pipeline from Kusasaletu Plant to Savuka TSF</p> <p>Start: 26°27'21.89"S, 27°21'29.50"E Middle: 26°26'46.51"S, 27°21'29.25"E End: 26°26'10.81"S, 27°20'56.45"E</p> <p>New Potable Water Pipeline:</p> <p>Start: 26°26'58.81"S; 27°21'15.10"E Middle: 26°26'51.58"S, 27°19'0.95"E End: 26°27'28.87"S, 27°16'38.14"E</p> <p>New Powerlines:</p> <p>Kusasaletu Plant to Deelkraal</p> <p>Start: 26°27'23.38"S, 27°21'33.53"E Middle: 26°26'50.14"S, 27°19'9.04"E End: 26°27'29.55"S, 27°16'38.94"E</p> <p>Kusasaletu plant - Kusasaletu TSF</p> <p>Start: 26°27'23.38"S, 27°21'33.53"E Middle: 26°27'47.43"S, 27°21'50.11"E End: 26°28'12.37"S, 27°21'44.23"E</p>	
3. Kusasaletu Plant upgrades	Kusasaletu Plant upgrades	26°27'26.75"S	27°21'30.90"E

2.2 SITE LOCALITY AND LAYOUT

The proposed project is located on various properties Namely: Farm Driefontein 113 IQ, Portion 1; Farm Blyvooruitzicht 116 IQ, portions 3, 4, 5, 6, 7, 10, 13 24, 62, 93, and 107; Farm Doornfontein 118 IQ, portions 1, 2, 11, 12, 13, 14, 25, 27, and 28; Farm Kleinfontein 141 IQ, portions 1, 2, 4, 5, and 6; Farm Deelkraal 142 IQ, portions 3, 23, 59 and 60; and Farm Buffelsdoorn 143 IQ, portions 1, 7, 9, 13, 31, and 35 in the Merafong City Local Municipality, West Rand District Municipality, Gauteng Province. The site is approximately 13km southwest of Carltonville.

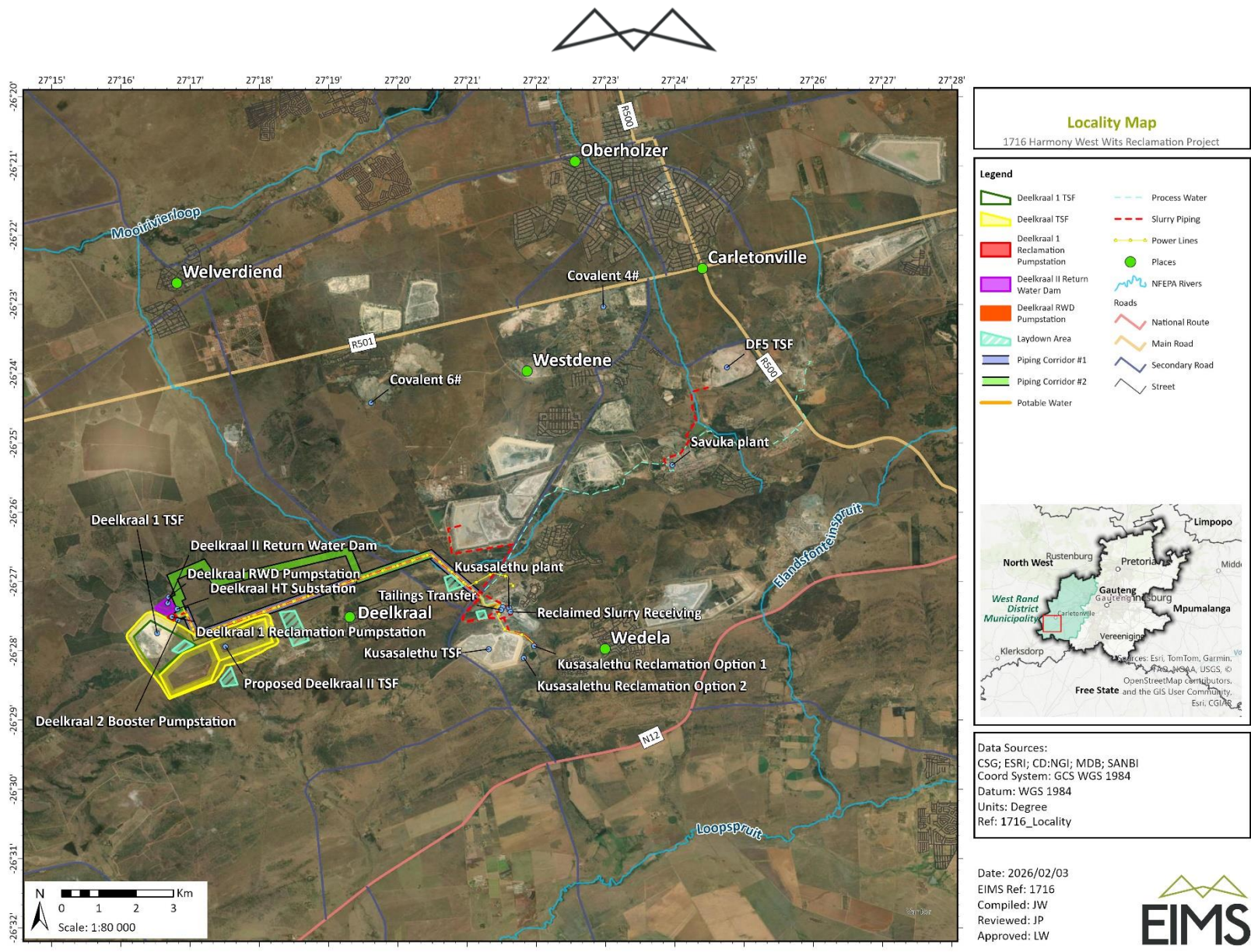


Figure 1: Site locality map.



2.3 NATIONAL SCREENING TOOL ASSESSMENT

Regulation 16(1)(b)(v) of the Environmental Impact Assessment Regulations (GNR 982 promulgated under the National Environmental Management Act (Act 107 of 1998-NEMA)), requires that a Screening Report generated by the national web-based environmental screening tool for the specific site and activity must accompany any application for Environmental Authorization.

The Screening Report identifies preliminary development incentives, restrictions, exclusions or prohibitions that apply to the proposed development site as well as the most environmentally sensitive features on the site based on the site sensitivity screening. On the basis of the sensitivities identified in the site sensitivity screening, a list of preliminary specialist studies required to be considered in the Impact Assessment process are provided. Table 2 provides the proposed development area environmental sensitivity as provided by the national web-based environmental screening tool.

Table 2: Screening Tool Report- Proposed development area environmental sensitivity.

Aspect	Very High	High	Medium	Low
Agriculture Theme	<input type="checkbox"/>	<input checked="" type="checkbox"/>	<input type="checkbox"/>	<input type="checkbox"/>
Animal species Theme	<input type="checkbox"/>	<input type="checkbox"/>	<input checked="" type="checkbox"/>	<input type="checkbox"/>
Aquatic Biodiversity Theme	<input checked="" type="checkbox"/>	<input type="checkbox"/>	<input type="checkbox"/>	<input type="checkbox"/>
Archaeological and Cultural Heritage	<input type="checkbox"/>	<input type="checkbox"/>	<input type="checkbox"/>	<input checked="" type="checkbox"/>
Civil Aviation Theme	<input type="checkbox"/>	<input checked="" type="checkbox"/>	<input type="checkbox"/>	<input type="checkbox"/>
Defence Theme	<input type="checkbox"/>	<input type="checkbox"/>	<input type="checkbox"/>	<input checked="" type="checkbox"/>
Palaeontology Theme	<input type="checkbox"/>	<input checked="" type="checkbox"/>	<input type="checkbox"/>	<input type="checkbox"/>
Plant Species Theme	<input type="checkbox"/>	<input type="checkbox"/>	<input checked="" type="checkbox"/>	<input type="checkbox"/>
Terrestrial Biodiversity Theme	<input checked="" type="checkbox"/>	<input type="checkbox"/>	<input type="checkbox"/>	<input type="checkbox"/>

3 SITE ASSESSMENT

Prior to commencing with a specialist assessment identified in the Screening Report, the current use of the land and the environmental sensitivity of the site, must be confirmed by undertaking a site sensitivity verification. The site sensitivity verification must be undertaken by an environmental assessment practitioner or a specialist. The site sensitivity verification must be undertaken through the use of:

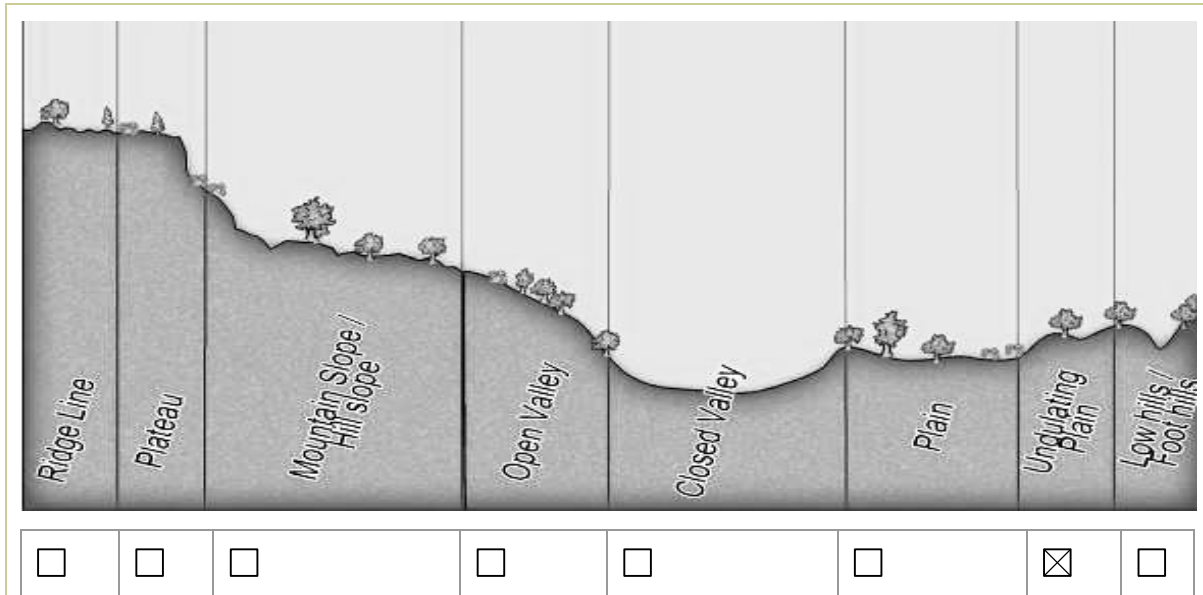
- a desk top analysis, using satellite imagery;
- a preliminary on-site inspection; and
- any other available and relevant information.

The sub-sections below aim to provide context of the existing site conditions to support the site sensitivity and verification.



3.1 GRADIENT

The topography of the location of the TSFs and associated infrastructure is fairly flat, comprising of undulating terrain surrounding the TSFs. The study area and surrounding elevation average approximately 1 600 metres above sea level (masl).



3.2 SENSITIVE AREAS

<i>Is the site located in the immediate vicinity of the following:</i>	Yes	No	Comment
Erosion Channels or areas of severe erosion/ destabilized soils	<input checked="" type="checkbox"/>	<input type="checkbox"/>	Some areas of the slopes of the neighbouring Deelkraal TSF are eroded and some of the area surrounding the site as well. However, no severe erosion or destabilized soils occur on or around the site. Intasol is managing the operation of the TSFs and regular inspections and audits are conducted to ensure the stability of the TSFs are maintained.
Wetlands (within 32m)	<input checked="" type="checkbox"/>	<input type="checkbox"/>	There are several wetlands located within the regulated areas of the TSF and pipeline routes.
Unstable slopes or geological features (rocky outcrops)	<input type="checkbox"/>	<input checked="" type="checkbox"/>	No rocky outcrops are present on or immediately surrounding the study area.
Bare areas	<input checked="" type="checkbox"/>	<input type="checkbox"/>	The neighbouring Deelkraal 1 TSF can be described as a bare area, however, dust suppression is being conducted and dust is monitored. The existing TSFs are maintained to prevent severe erosion. Some areas immediately adjacent to the



<i>Is the site located in the immediate vicinity of the following:</i>	Yes	No	Comment
			study area and pipeline routes are also bare, including access roads.
Other Sensitive or risk areas?	<input type="checkbox"/>	<input checked="" type="checkbox"/>	The presence of Class 1 and 2 ridges are of concern from a terrestrial biodiversity perspective, however the current layout avoids these areas, No other sensitive areas on or surrounding the site were noted during the desktop study or site verification.
Are any existing servitudes and structures directly or indirectly affected by the proposed sites and routes (e.g. Eskom, public road servitudes and restrictions-60m from National Road, farmer's water/irrigation supplies, etc.)?	<input checked="" type="checkbox"/>	<input type="checkbox"/>	There are neighbouring PV projects adjacent to the proposed TSF site. Old Eskom servitudes are located to the southeast of the proposed TSF however these are no longer in use.

3.3 VEGETATION

<i>Which of the listed descriptions best describes the general groundcover on and around the site?</i>				
<input type="checkbox"/> Natural veld - good condition	<input type="checkbox"/> Natural veld with scattered aliens	<input checked="" type="checkbox"/> Natural veld with heavy alien infestation	<input type="checkbox"/> Veld dominated by alien species	<input type="checkbox"/> Gardens
<input type="checkbox"/> Sport field	<input type="checkbox"/> Cultivated land	<input type="checkbox"/> Paved surface	<input checked="" type="checkbox"/> Building or other structure	<input checked="" type="checkbox"/> Bare soil
Comments on vegetation composition:		Natural veld with heavy alien infestation		
Comments on weed species/type		The alien species will be identified during the impact assessment of the activity. Mitigation measures to prevent the further spread of the alien invasive vegetation are included in the existing Alien Invasive Management Plan of the Mine.		

3.4 LAND COVER/ USE DESCRIPTION

The SSVR aims to:

- confirm or dispute the current use of the land and the environmental sensitivity as identified by the screening tool, such as new developments or infrastructure, the change in vegetation cover or status etc.; and
- contain motivation and evidence (e.g. photographs) of either the verified or different use of the land and environmental sensitivity.

The current land use of the study area is mining, specifically Tailings Storage Facilities and existing mining infrastructure, much of which was established decades prior, but is still operational. The surrounding land uses include other mining activities including TSFs and associated return water dams, underground mining (Harmony



and Blyvoor Mine and others), public roads, plantations, natural veld, grazing, some retail (a shopping centre), and further away residential areas, schools, hospital, a hiking trail and the town of Carletonville and Wedela as well as the Deelkraal Community. **Site Photographs are presented below:**



Figure 2: View from a dirt road looking north towards the Deelkraal II TSF site



Figure 3: View west along access road – the Deelkraal II TSF will be located on either side of this road.



Figure 4: View south from access road across Deelkraal II TSF site.



Figure 5: View west along access road across the proposed Deelkraal II TSF site.



Figure 6: View north of the southern side slope of the existing Deelkraal TSF, adjacent to the proposed Deelkraal II TSF



Figure 7: View northeast of the southern side slope of the existing Deelkraal TSF, adjacent to the proposed Deelkraal II TSF.



Figure 8: View south from the northern-most tip of the Deelkraal II – approximate location of pump station



Figure 9: View west from the northern-most tip of the Deelkraal II – approximate location of pump station



Figure 10: graveyard located near one the pipeline routes



Figure 11: View east along existing access road along proposed pipeline routes.



Figure 12: View east along proposed pipeline routes towards Kusasaletu plant area.



Figure 13: View northeast from existing road along proposed pipeline route.



4 VERIFICATION FINDINGS AND MOTIVATION

The Screening Report identifies preliminary development incentives, restrictions, exclusions or prohibitions that apply to the proposed development site as well as the most environmentally sensitive features on the site based on the site sensitivity screening (Section 2.3). On the basis of the sensitivities identified in the site sensitivity screening, a list of preliminary specialist studies required to be considered in the Impact Assessment process are provided. Table 3 below lists the screening tool identified specialist studies and associated screening tool sensitivity. Based on the findings of the site verification process (Section 3) a verified, or suggested revised sensitivity is provided together with an associated motivation.

Table 3: Assessment for specialist studies and motivation.

Screening Specialist Required:	Tool Study	Level of Sensitivity:	Suggested Sensitivity:	Required level of Assessment	Motivation
Agriculture Impact Assessment		High	Medium	Full Assessment	Most of the surrounding land uses are associated with mining. The complete study area and most of the directly adjacent area is already disturbed with mining activities such as the TSFs. Therefore, it is the opinion of the EAP that there is limited agricultural potential on the site. A full soils assessment will be undertaken
Archaeological and Cultural Heritage Impact Assessment		Low	High	Full Assessment	Several heritage sites (mostly graves) are located in and around the project area, although none have been identified yet within the TSF footprint. Based on this a high sensitivity and full assessment is recommended.
Palaeontology Impact Assessment		High	High	Full Assessment	Due to the location of palaeontological resources normally occurring beneath the surface, a site verification could not be completed for palaeontological resources. Based on screening tool sensitivity a full PIA will be undertaken.
Terrestrial Biodiversity Impact Assessment		Very High	Medium	Full Assessment	Most of the surrounding land uses are associated with mining. The complete study area and most of the directly adjacent area is already disturbed with mining activities



Screening Specialist Required:	Tool Study	Level of Sensitivity:	Suggested Sensitivity:	Required level of Assessment	Motivation
					such as the TSFs. During the site visit, the EAP did not encounter any terrestrial biodiversity sensitive features or species on the study area however this will be confirmed by the biodiversity specialist during a detailed assessment.
Aquatic Biodiversity Impact Assessment		Very High	High	Full Assessment	There are several wetlands in the area. A full aquatic biodiversity impact assessment will be conducted by a suitably qualified specialist and included in the EIR.
Plant Species Assessment		Medium	Medium	Full Assessment	Most of the surrounding land uses are associated with mining. The complete study area and most of the directly adjacent area is already disturbed with mining activities such as the TSFs. During the site visit, the EAP did not encounter any terrestrial biodiversity sensitive features or species on the study area however this will be confirmed by the biodiversity specialist during a detailed assessment.
Animal Species Assessment		Medium	Medium	None	Most of the surrounding land uses are associated with mining. The complete study area and most of the directly adjacent area is already disturbed with mining activities such as the TSFs. During the site visit, the EAP did not encounter any terrestrial biodiversity sensitive features or species on the study area, however this will be investigated further by the biodiversity specialist.
Civil Theme	Aviation	High	High	Other	The Civil Aviation Authority (CAA) is included in the Interested and Affected Parties Database and comments from



Screening Specialist Required:	Tool Study	Level of Sensitivity:	Suggested Sensitivity:	Required level of Assessment	Motivation
					the CAA will be obtained as to whether an application is required to be submitted by the Applicant for the proposed activity. An obstacle application will be submitted if required.
Hydrology Assessment		Not specified.	High	Full Assessment	There are watercourses close to the TSF and pipeline routes. A full hydrology assessment will be conducted by a suitably qualified specialist and included in the EIR.
Noise Assessment	Impact	Not specified.	Low	Compliance statement	The proposed activity will not generate significant noise during operations. A compliance statement for noise impacts during construction is required.
Traffic Assessment	Impact	Not specified.	Medium	Full Assessment	A traffic assessment will be completed to identify construction related traffic impacts and mitigations.
Health Assessment	Impact	Not specified.	Very High	Full Assessment	A full radiology and health impact assessment by a suitably qualified specialist will be conducted and included in the EIR
Socio-Economic Impact Assessment		Not specified.	Very High	Full Assessment	A full social impact assessment by a suitably qualified specialist will be conducted and included in the EIR
Ambient Air Quality Impact Assessment		Not specified.	Very High	Full Assessment	A full ambient air quality impact assessment will be conducted by a suitably qualified specialist and included in the EIR.
Visual Assessment	Impact (Not listed by the screening tool, but added by the EAP).	Not specified.	Very High	Full Assessment	Although the area is transformed by existing mining activities a full visual impact assessment will be conducted by a suitably qualified specialist and included in the EIR.



Appendix 1: DFFE Screening Tool Report