

**SCREENING REPORT FOR AN ENVIRONMENTAL AUTHORIZATION AS
REQUIRED BY THE 2014 EIA REGULATIONS – PROPOSED SITE
ENVIRONMENTAL SENSITIVITY**

EIA Reference number: New Application

Project name: Harmony Nooitgedacht Tailings Storage Facility

Project title: Proposed Construction of a new mega tailings storage facility located in Welkom

Date screening report generated: 23/03/2023 11:55:39

Applicant: Harmony

Compiler: EIMS

Compiler signature:


.....

Application Category: Transformation of land | Indigenous vegetation

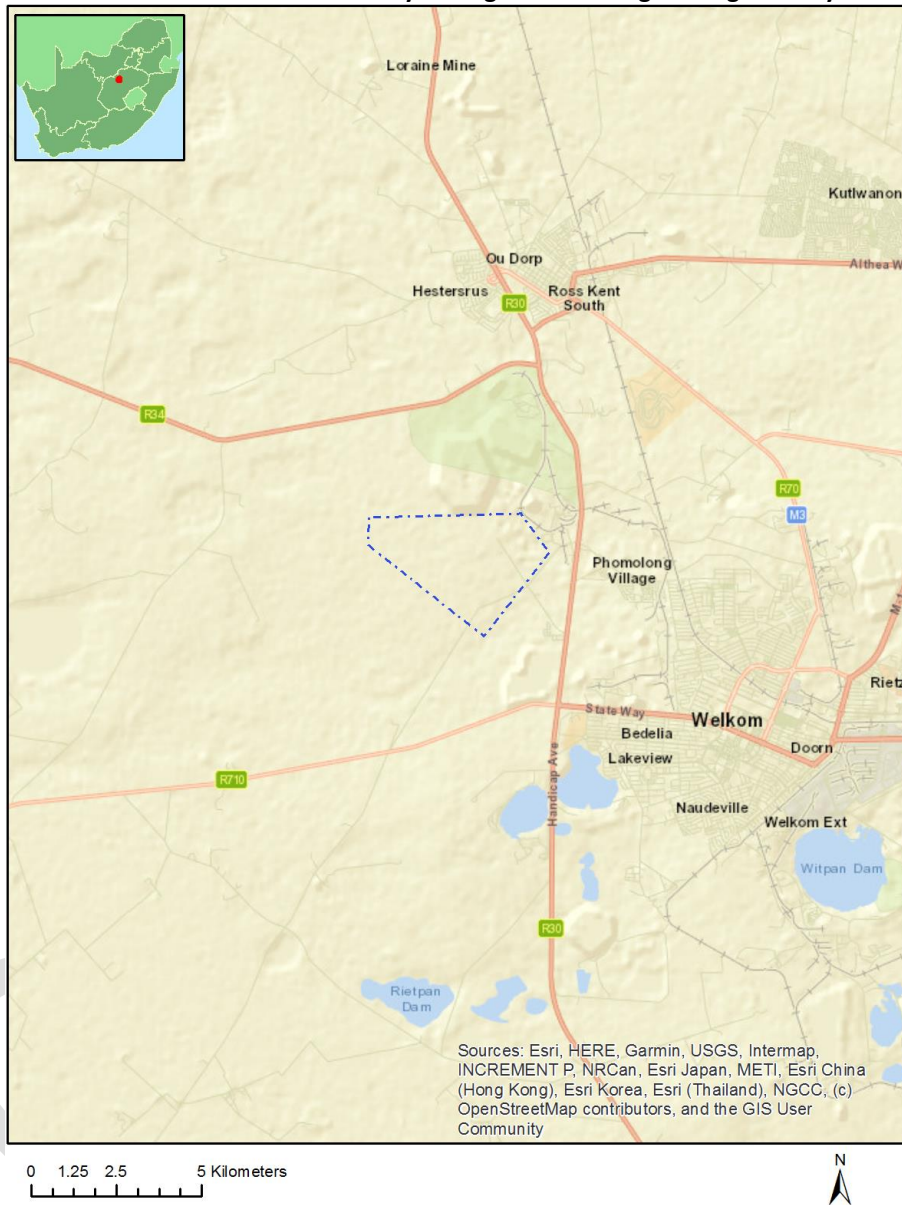
Table of Contents

Proposed Project Location	3
Orientation map 1: General location	3
Map of proposed site and relevant area(s)	4
Cadastral details of the proposed site	4
Wind and Solar developments with an approved Environmental Authorisation or applications under consideration within 30 km of the proposed area	5
Environmental Management Frameworks relevant to the application	5
Environmental screening results and assessment outcomes	5
Relevant development incentives, restrictions, exclusions or prohibitions	5
Proposed Development Area Environmental Sensitivity	5
Specialist assessments identified	6
Results of the environmental sensitivity of the proposed area	7
MAP OF RELATIVE AGRICULTURE THEME SENSITIVITY	7
MAP OF RELATIVE ANIMAL SPECIES THEME SENSITIVITY	8
MAP OF RELATIVE AQUATIC BIODIVERSITY THEME SENSITIVITY	9
MAP OF RELATIVE ARCHAEOLOGICAL AND CULTURAL HERITAGE THEME SENSITIVITY	10
MAP OF RELATIVE CIVIL AVIATION THEME SENSITIVITY	11
MAP OF RELATIVE DEFENCE THEME SENSITIVITY	12
MAP OF RELATIVE PALEONTOLOGY THEME SENSITIVITY	13
MAP OF RELATIVE PLANT SPECIES THEME SENSITIVITY	14
MAP OF RELATIVE TERRESTRIAL BIODIVERSITY THEME SENSITIVITY	15

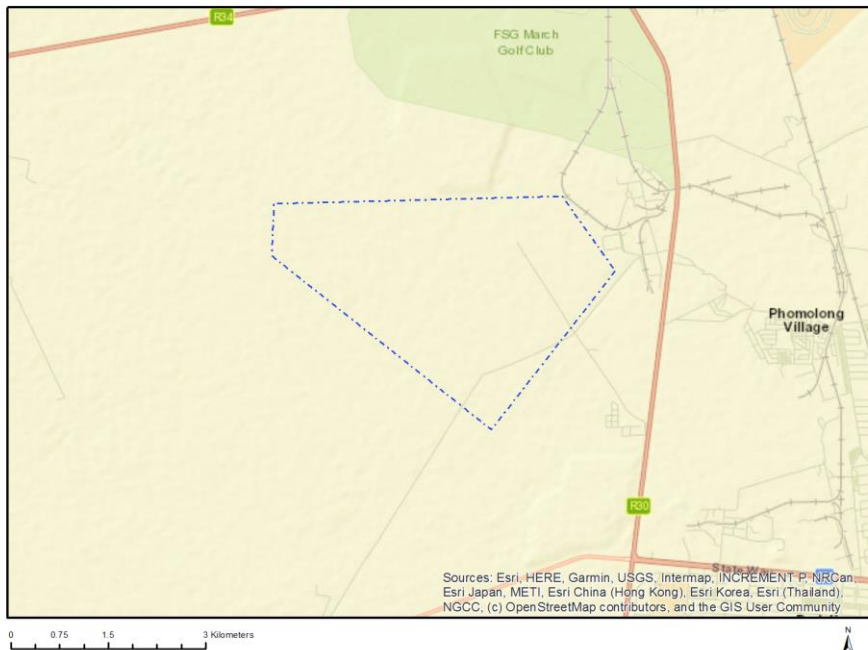
Proposed Project Location

Orientation map 1: General location

General Orientation: Harmony Nooitgedacht Tailings Storage Facility



Map of proposed site and relevant area(s)



Cadastral details of the proposed site

Property details:

No	Farm Name	Farm/ Erf No	Portion	Latitude	Longitude	Property Type
1	EUREKA	146	0	27°54'33.82S	26°38'58.02E	Farm
2	RIETPAN	17	0	27°55'5.39S	26°40'39.52E	Farm
3	JACOBSDAL	37	0	27°56'15.57S	26°39'1.4E	Farm
4	RIETPAN	17	0	27°55'2.6S	26°40'40.22E	Farm
5	RHEEDERS DAM	31	0	27°56'26.49S	26°40'42.48E	Farm
6	MIJANNIE	66	0	27°56'8.11S	26°41'9.62E	Farm
7	OUDERS GIFT	48	0	27°54'58.27S	26°39'47.07E	Farm
8	NOOITGEDACHT	50	0	27°56'17.31S	26°40'3.88E	Farm
9	GOEDGEDACHT	53	0	27°57'7.27S	26°40'13.9E	Farm
10	RIETPAN	17	0	27°55'7.69S	26°40'46.82E	Farm Portion
11	RIETPAN	17	0	27°55'25.36S	26°40'42.17E	Farm Portion
12	RHEEDERS DAM	31	0	27°56'23.42S	26°40'48.35E	Farm Portion
13	OUDERS GIFT	48	0	27°54'58.54S	26°39'51.09E	Farm Portion
14	MIJANNIE	66	0	27°55'56.85S	26°40'59.01E	Farm Portion
15	JACOBSDAL	37	0	27°56'15.57S	26°39'1.4E	Farm Portion
16	GOEDGEDACHT	53	0	27°57'7.27S	26°40'13.9E	Farm Portion
17	EUREKA	146	0	27°54'33.82S	26°38'58.02E	Farm Portion
18	NOOITGEDACHT	50	0	27°56'17.31S	26°40'3.88E	Farm Portion

Development footprint¹ vertices:

¹ "development footprint", means the area within the site on which the development will take place and includes all ancillary developments for example roads, power lines, boundary walls, paving etc. which require vegetation clearance or which will be disturbed and for which the application has been submitted.

No development footprint(s) specified.

Wind and Solar developments with an approved Environmental Authorisation or applications under consideration within 30 km of the proposed area

No	EIA Reference No	Classification	Status of application	Distance from proposed area (km)
1	14/12/16/3/3/1/644	Solar PV	Approved	24.8
2	14/12/16/3/3/1/1472	Solar PV	Approved	2.2
3	12/12/20/2669	Solar PV	Approved	25.3
4	14/12/16/3/3/1/1444	Solar PV	Approved	7.6
5	12/12/20/2669/A	Solar PV	Approved	25.3
6	14/12/16/3/3/1/1471	Solar PV	Approved	0

Environmental Management Frameworks relevant to the application

No intersections with EMF areas found.

Environmental screening results and assessment outcomes

The following sections contain a summary of any development incentives, restrictions, exclusions or prohibitions that apply to the proposed development site as well as the most environmental sensitive features on the site based on the site sensitivity screening results for the application classification that was selected. The application classification selected for this report is:

Transformation of land | Indigenous vegetation.

Relevant development incentives, restrictions, exclusions or prohibitions

The following development incentives, restrictions, exclusions or prohibitions and their implications that apply to this site are indicated below.

Incentive, restriction or prohibition	Implication
Strategic Transmission Corridor-Central corridor	https://screening.environment.gov.za/ScreeningDownloads/DevelopmentZones/Combined_EGI.pdf

Proposed Development Area Environmental Sensitivity

The following summary of the development site environmental sensitivities is identified. Only the highest environmental sensitivity is indicated. The footprint environmental sensitivities for the proposed development footprint as identified, are indicative only and must be verified on site by a suitably qualified person before the specialist assessments identified below can be confirmed.

Theme	Very High sensitivity	High sensitivity	Medium sensitivity	Low sensitivity

Agriculture Theme		X		
Animal Species Theme		X		
Aquatic Biodiversity Theme	X			
Archaeological and Cultural Heritage Theme				X
Civil Aviation Theme		X		
Defence Theme				X
Paleontology Theme		X		
Plant Species Theme				X
Terrestrial Biodiversity Theme	X			

Specialist assessments identified

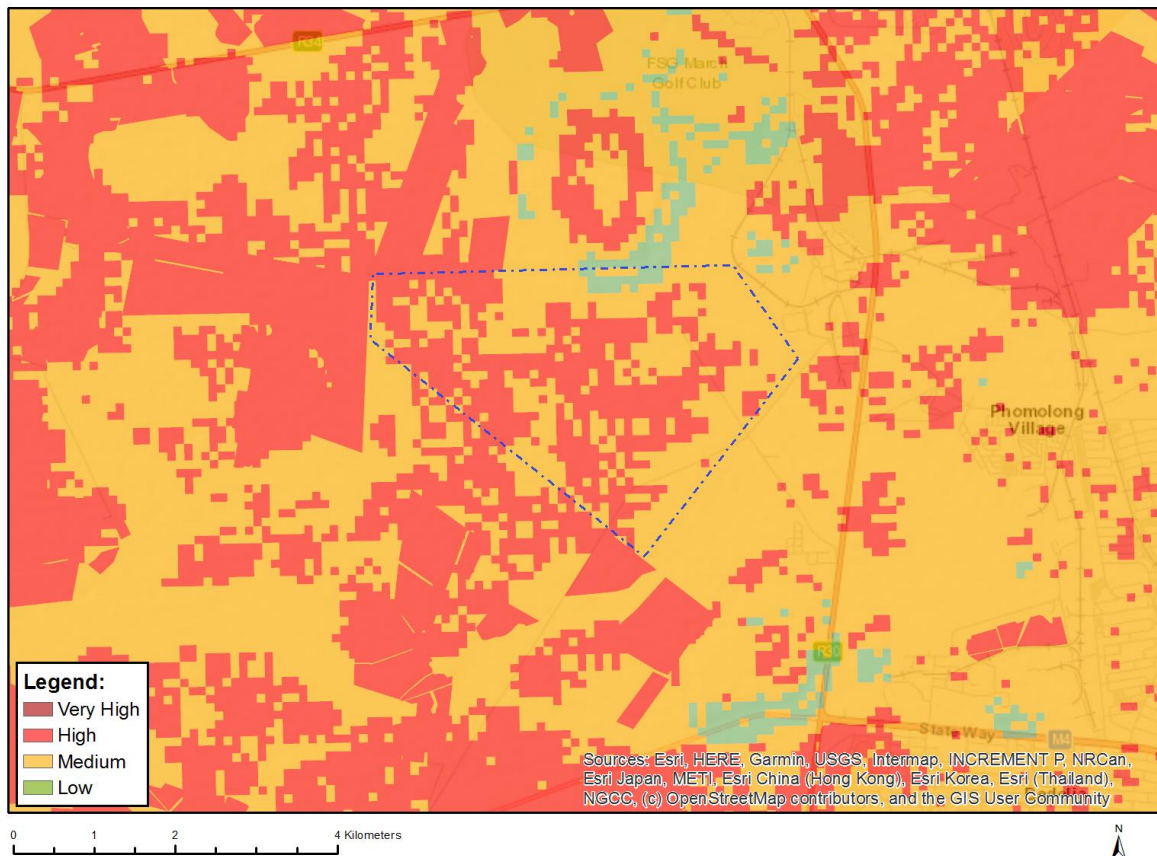
Based on the selected classification, and the known impacts associated with the proposed development, the following list of specialist assessments have been identified for inclusion in the assessment report. It is the responsibility of the EAP to confirm this list and to motivate in the assessment report, the reason for not including any of the identified specialist study including the provision of photographic evidence of the site situation.

No	Specialist assessment	Assessment Protocol
1	Landscape/Visual Impact Assessment	https://screening.environment.gov.za/ScreeningDownloads/AssessmentProtocols/Gazetted_General_Requirement_Assessment_Protocols.pdf
2	Archaeological and Cultural Heritage Impact Assessment	https://screening.environment.gov.za/ScreeningDownloads/AssessmentProtocols/Gazetted_General_Requirement_Assessment_Protocols.pdf
3	Palaeontology Impact Assessment	https://screening.environment.gov.za/ScreeningDownloads/AssessmentProtocols/Gazetted_General_Requirement_Assessment_Protocols.pdf
4	Terrestrial Biodiversity Impact Assessment	https://screening.environment.gov.za/ScreeningDownloads/AssessmentProtocols/Gazetted_Terrestrial_Biodiversity_Assessment_Protocols.pdf
5	Aquatic Biodiversity Impact Assessment	https://screening.environment.gov.za/ScreeningDownloads/AssessmentProtocols/Gazetted_Aquatic_Biodiversity_Assessment_Protocols.pdf
6	Socio-Economic Assessment	https://screening.environment.gov.za/ScreeningDownloads/AssessmentProtocols/Gazetted_General_Requirement_Assessment_Protocols.pdf
7	Plant Species Assessment	https://screening.environment.gov.za/ScreeningDownloads/AssessmentProtocols/Gazetted_Plant_Species_Assessment_Protocols.pdf
8	Animal Species Assessment	https://screening.environment.gov.za/ScreeningDownloads/AssessmentProtocols/Gazetted_Animal_Species_Assessment_Protocols.pdf

Results of the environmental sensitivity of the proposed area.

The following section represents the results of the screening for environmental sensitivity of the proposed site for relevant environmental themes associated with the project classification. It is the duty of the EAP to ensure that the environmental themes provided by the screening tool are comprehensive and complete for the project. Refer to the disclaimer.

MAP OF RELATIVE AGRICULTURE THEME SENSITIVITY

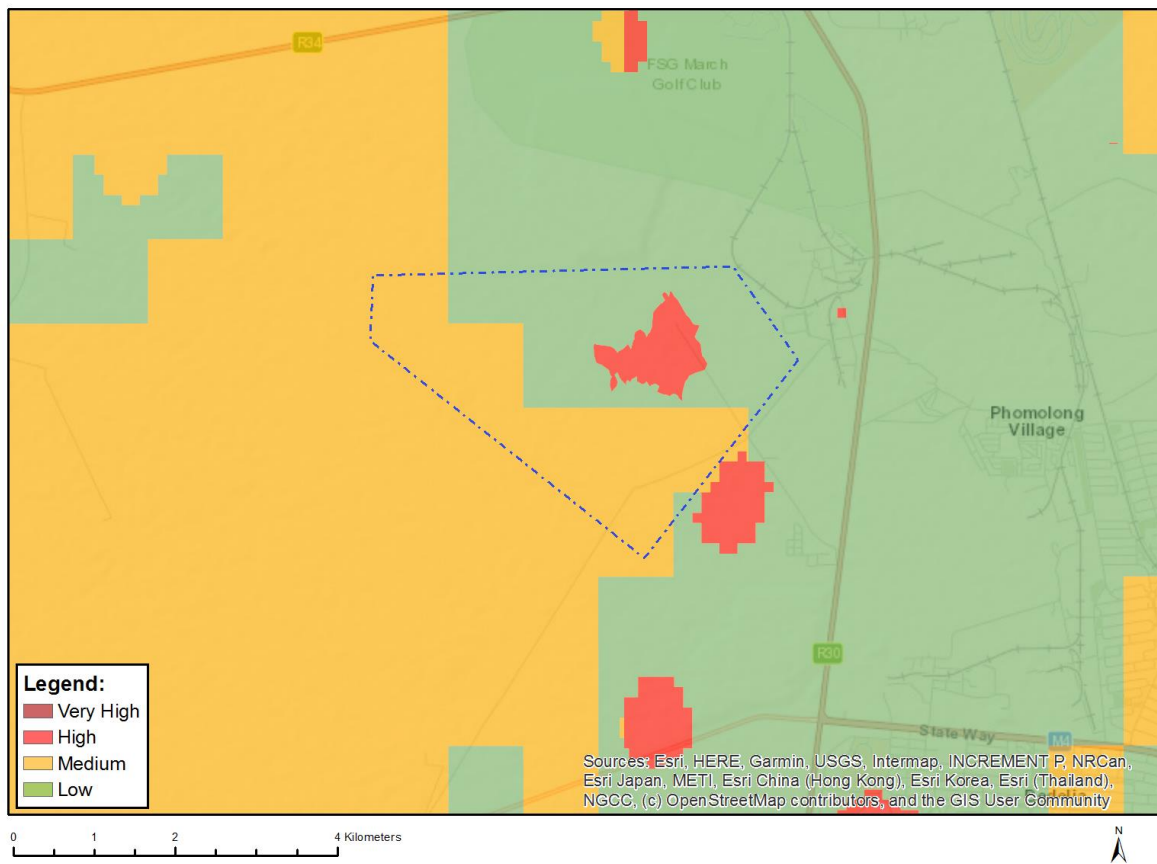


Very High sensitivity	High sensitivity	Medium sensitivity	Low sensitivity
	X		

Sensitivity Features:

Sensitivity	Feature(s)
High	Land capability;09. Moderate-High/10. Moderate-High
High	Old Fields;Land capability;09. Moderate-High/10. Moderate-High
High	Old Fields;Land capability;06. Low-Moderate/07. Low-Moderate/08. Moderate
Low	Land capability;01. Very low/02. Very low/03. Low-Very low/04. Low-Very low/05. Low
Medium	Land capability;06. Low-Moderate/07. Low-Moderate/08. Moderate

MAP OF RELATIVE ANIMAL SPECIES THEME SENSITIVITY



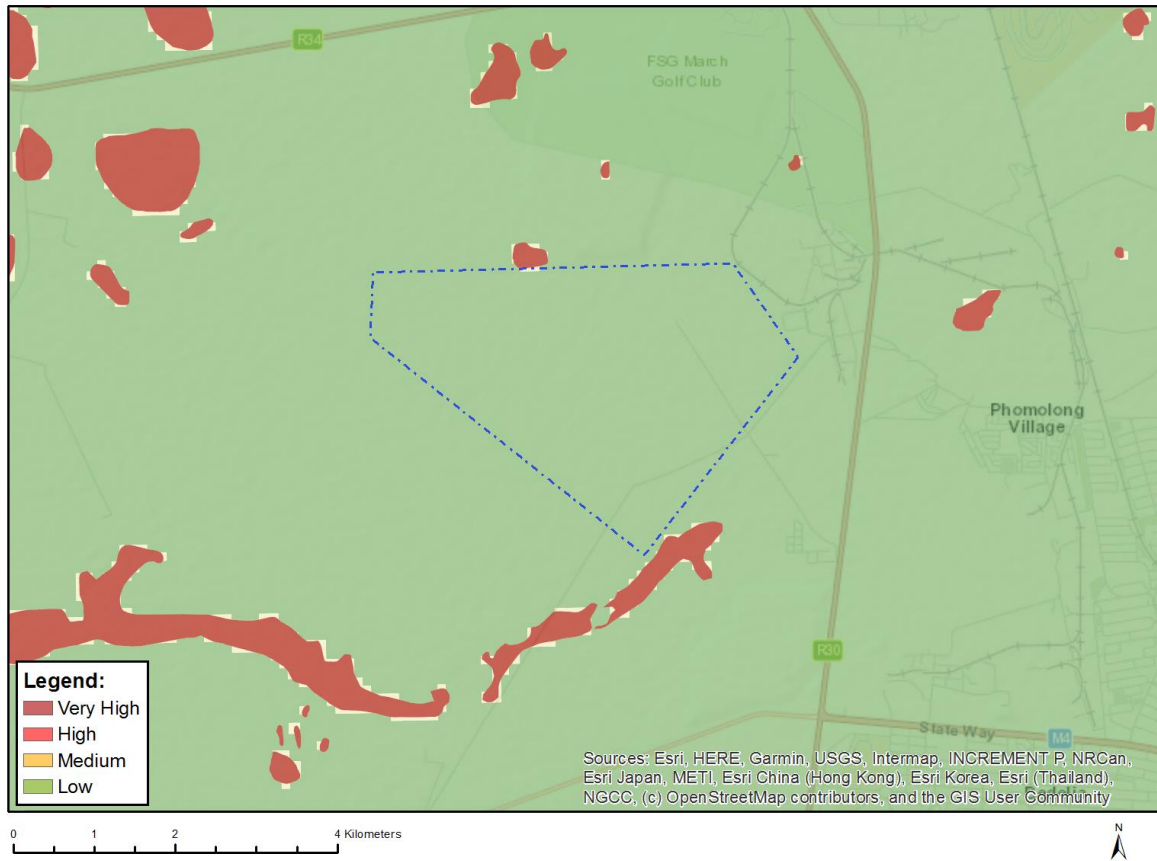
Where only a sensitive plant unique number or sensitive animal unique number is provided in the screening report and an assessment is required, the environmental assessment practitioner (EAP) or specialist is required to email SANBI at eiadatarequests@sanbi.org.za listing all sensitive species with their unique identifiers for which information is required. The name has been withheld as the species may be prone to illegal harvesting and must be protected. SANBI will release the actual species name after the details of the EAP or specialist have been documented.

Very High sensitivity	High sensitivity	Medium sensitivity	Low sensitivity
	X		

Sensitivity Features:

Sensitivity	Feature(s)
High	Sensitive species 15
Low	Subject to confirmation
Medium	Sensitive species 15

MAP OF RELATIVE AQUATIC BIODIVERSITY THEME SENSITIVITY

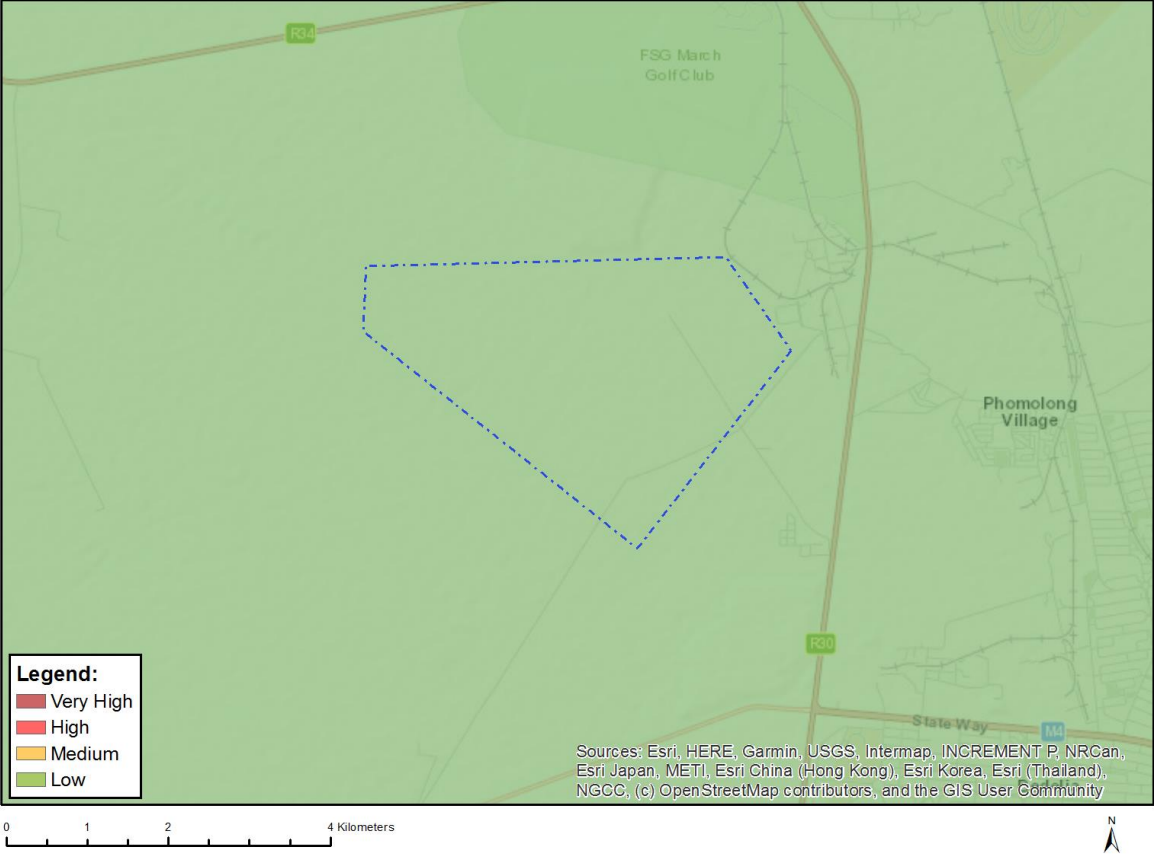


Very High sensitivity	High sensitivity	Medium sensitivity	Low sensitivity
X			

Sensitivity Features:

Sensitivity	Feature(s)
Low	Low sensitivity
Very High	Wetlands and Estuaries

MAP OF RELATIVE ARCHAEOLOGICAL AND CULTURAL HERITAGE THEME SENSITIVITY

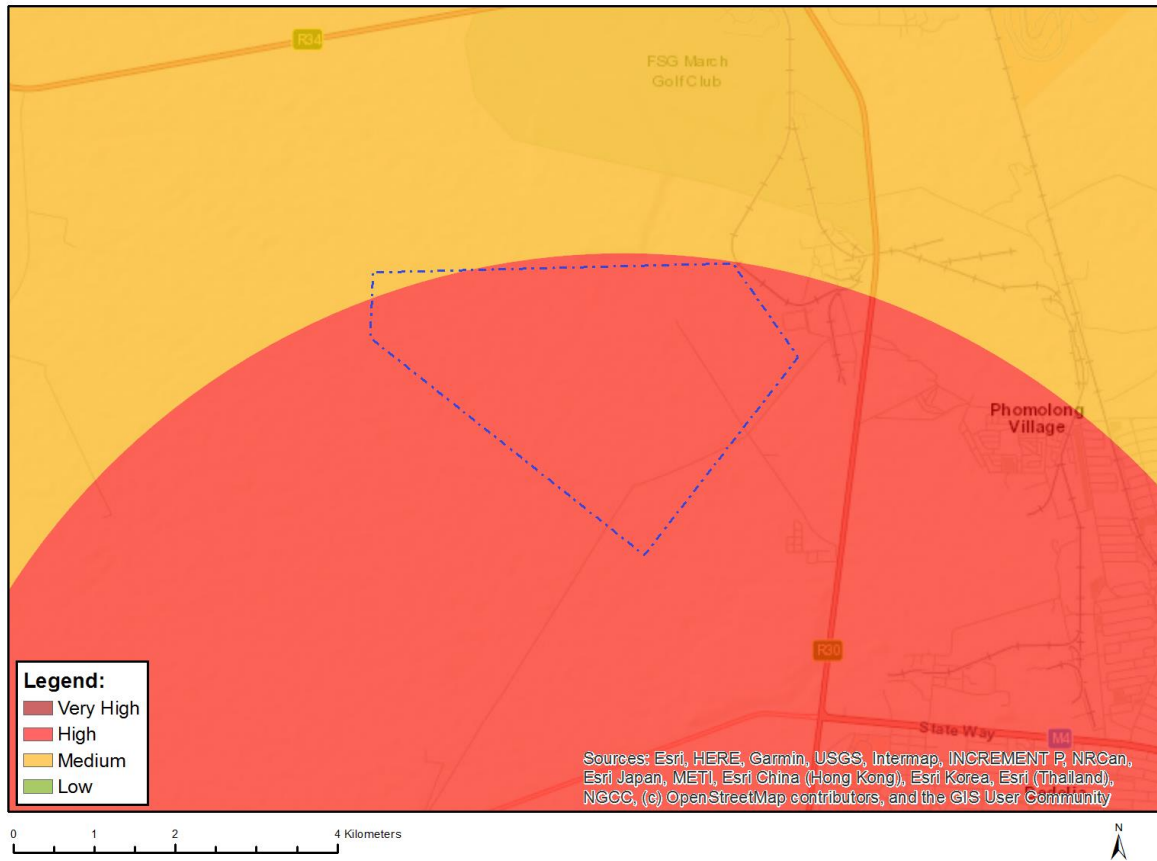


Very High sensitivity	High sensitivity	Medium sensitivity	Low sensitivity
			X

Sensitivity Features:

Sensitivity	Feature(s)
Low	Low sensitivity

MAP OF RELATIVE CIVIL AVIATION THEME SENSITIVITY

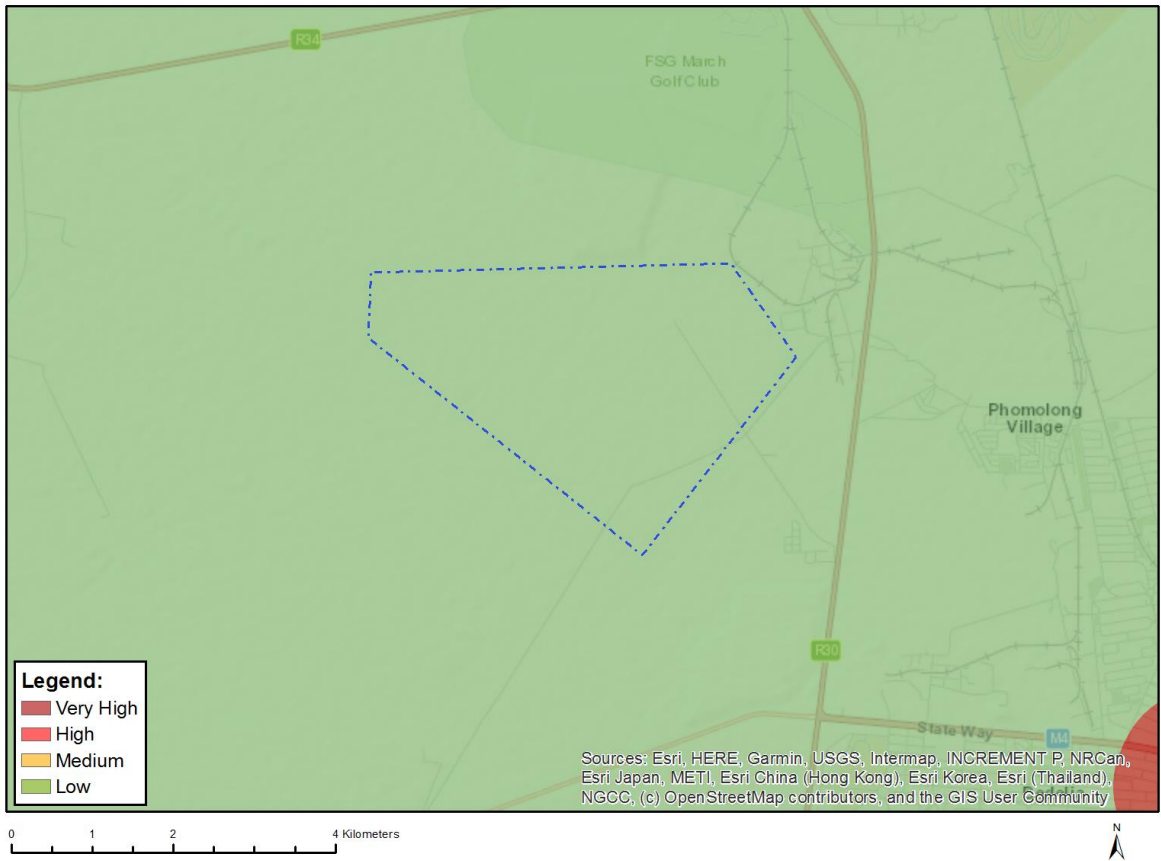


Very High sensitivity	High sensitivity	Medium sensitivity	Low sensitivity
	X		

Sensitivity Features:

Sensitivity	Feature(s)
High	Within 8 km of other civil aviation aerodrome
Medium	Within 5 km of an air traffic control or navigation site
Medium	Between 8 and 15 km of other civil aviation aerodrome

MAP OF RELATIVE DEFENCE THEME SENSITIVITY

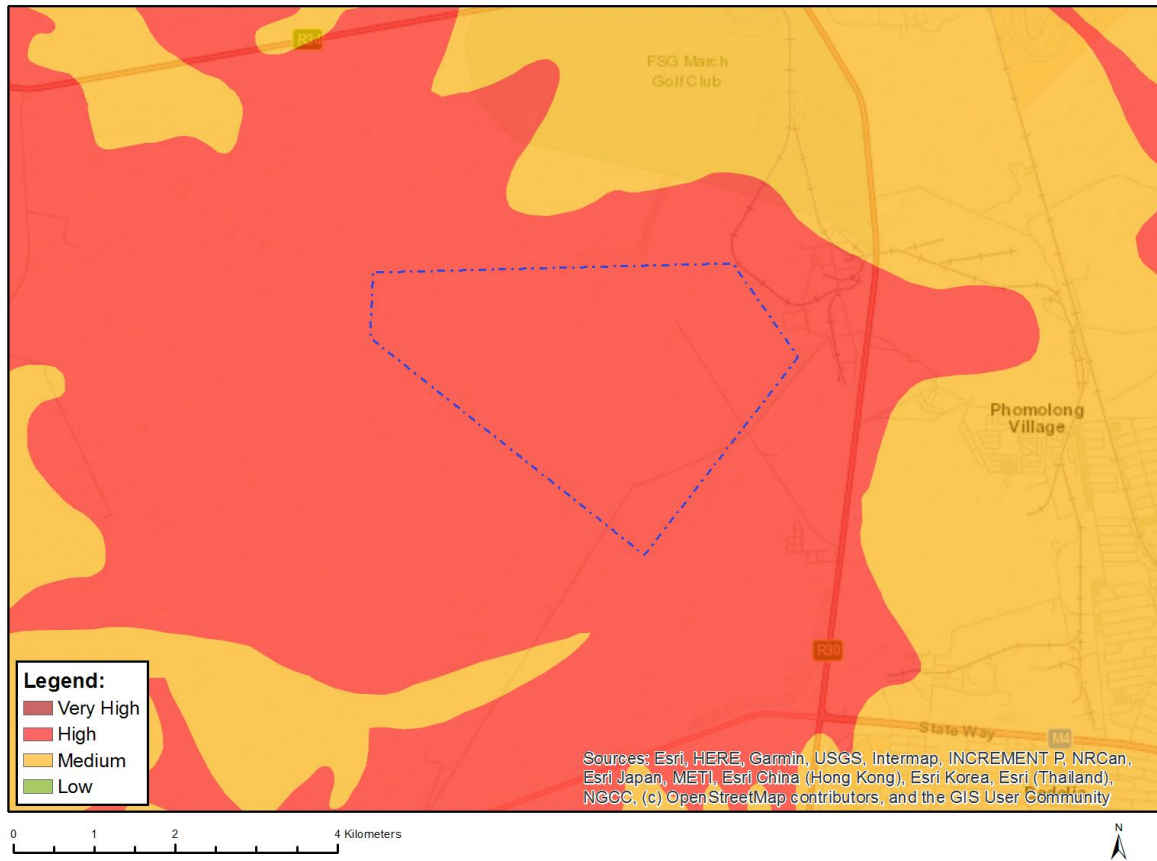


Very High sensitivity	High sensitivity	Medium sensitivity	Low sensitivity
			X

Sensitivity Features:

Sensitivity	Feature(s)
Low	Low Sensitivity

MAP OF RELATIVE PALEONTOLOGY THEME SENSITIVITY

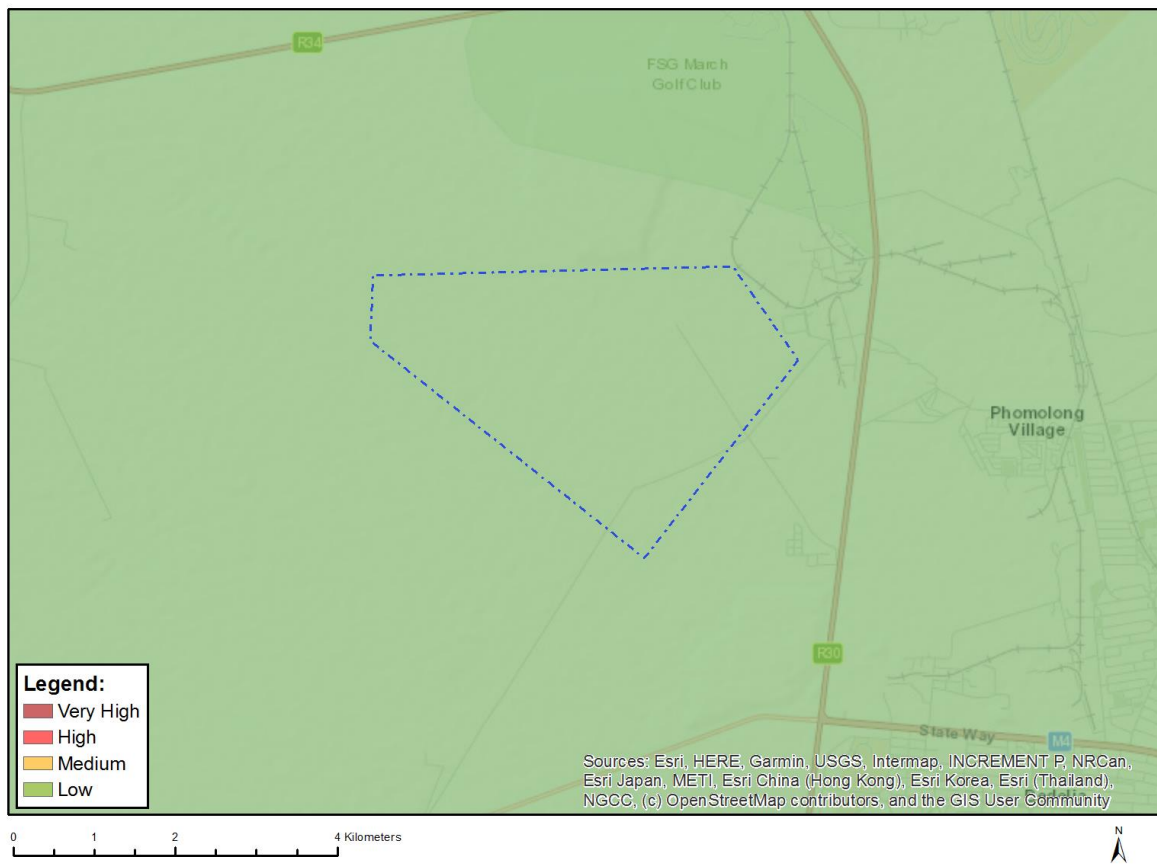


Very High sensitivity	High sensitivity	Medium sensitivity	Low sensitivity
	X		

Sensitivity Features:

Sensitivity	Feature(s)
High	Features with a High paleontological sensitivity
Medium	Features with a Medium paleontological sensitivity

MAP OF RELATIVE PLANT SPECIES THEME SENSITIVITY



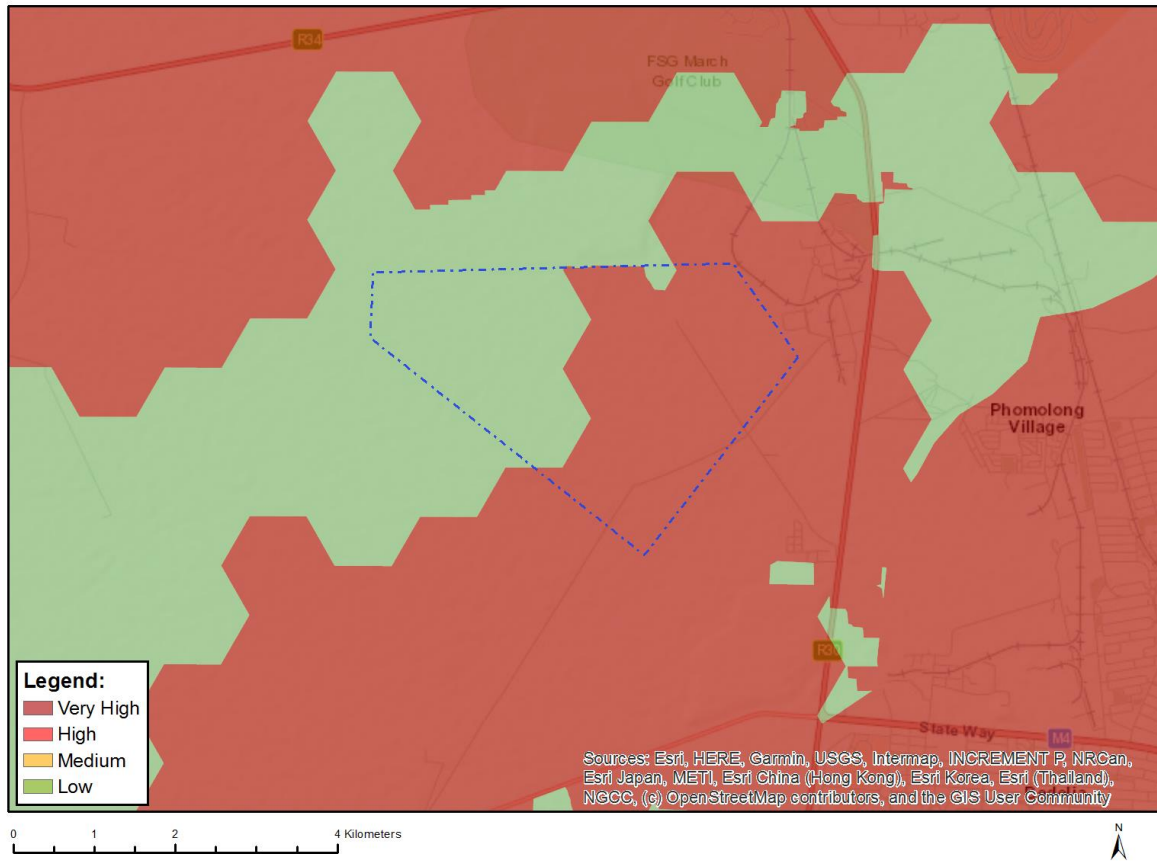
Where only a sensitive plant unique number or sensitive animal unique number is provided in the screening report and an assessment is required, the environmental assessment practitioner (EAP) or specialist is required to email SANBI at eiadatarequests@sanbi.org.za listing all sensitive species with their unique identifiers for which information is required. The name has been withheld as the species may be prone to illegal harvesting and must be protected. SANBI will release the actual species name after the details of the EAP or specialist have been documented.

Very High sensitivity	High sensitivity	Medium sensitivity	Low sensitivity
			X

Sensitivity Features:

Sensitivity	Feature(s)
Low	Low Sensitivity

MAP OF RELATIVE TERRESTRIAL BIODIVERSITY THEME SENSITIVITY



Very High sensitivity	High sensitivity	Medium sensitivity	Low sensitivity
X			

Sensitivity Features:

Sensitivity	Feature(s)
Low	Low Sensitivity
Very High	Critical biodiversity area 1
Very High	Ecological support area 1
Very High	Ecological support area 2

**SCREENING REPORT FOR AN ENVIRONMENTAL AUTHORIZATION AS
REQUIRED BY THE 2014 EIA REGULATIONS – PROPOSED SITE
ENVIRONMENTAL SENSITIVITY**

EIA Reference number:

Project name: Nooitgedacht Pipelines

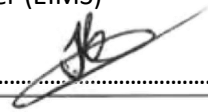
Project title: Nooitgedacht Pipelines

Date screening report generated: 02/08/2024 10:29:35

Applicant: Harmong Gold

Compiler: John von Mayer (EIMS)

Compiler signature:


.....

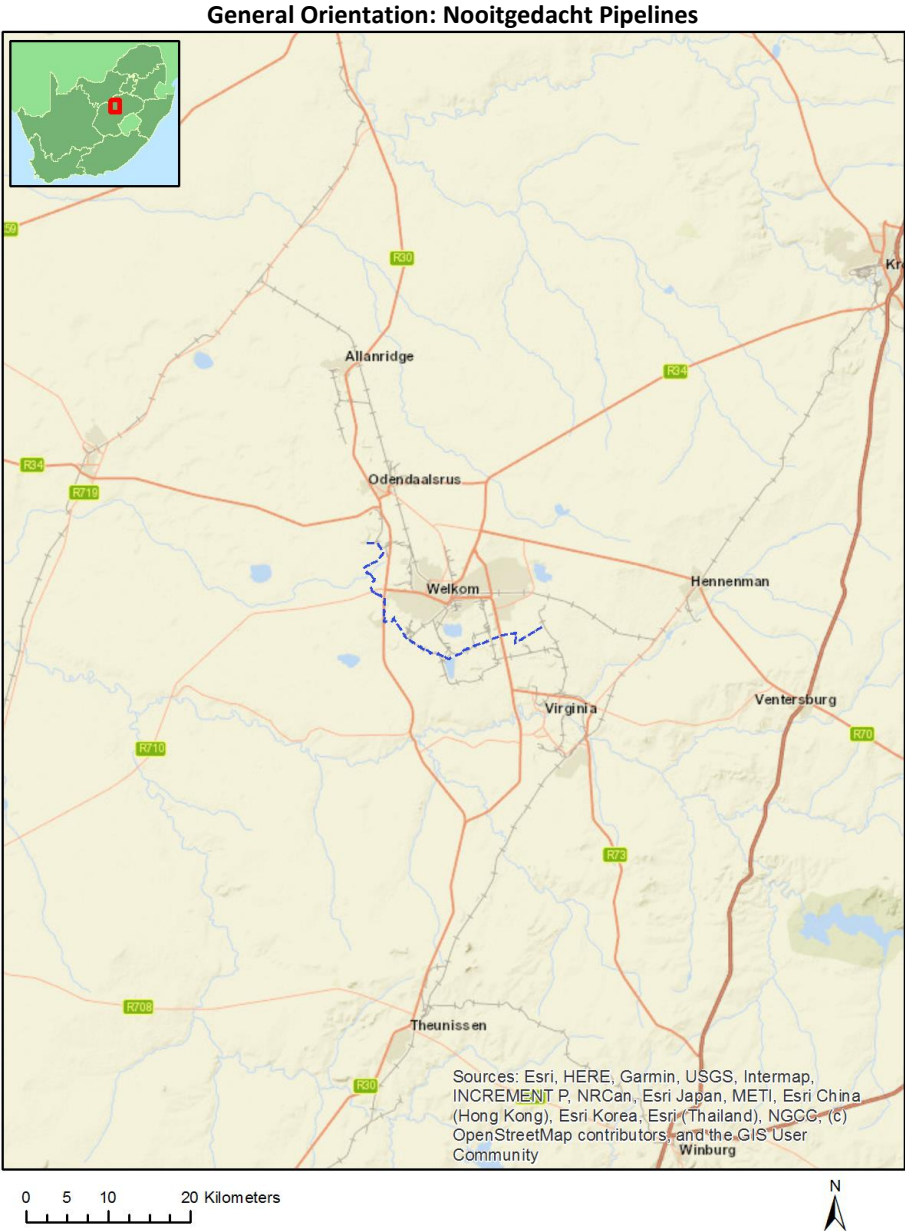
Application Category: Mining|Beneficiation|Mineral

Table of Contents

- Proposed Project Location 3
 - Orientation map 1: General location 3
- Map of proposed site and relevant area(s) 4
 - Cadastral details of the proposed site 4
 - Wind and Solar developments with an approved Environmental Authorisation or applications under consideration within 30 km of the proposed area 5
 - Environmental Management Frameworks relevant to the application 6
- Environmental screening results and assessment outcomes 6
 - Relevant development incentives, restrictions, exclusions or prohibitions 6
 - Proposed Development Area Environmental Sensitivity 7
 - Specialist assessments identified 7
- Results of the environmental sensitivity of the proposed area 9
 - MAP OF RELATIVE AGRICULTURE THEME SENSITIVITY 9
 - MAP OF RELATIVE ANIMAL SPECIES THEME SENSITIVITY 10
 - MAP OF RELATIVE AQUATIC BIODIVERSITY THEME SENSITIVITY 11
 - MAP OF RELATIVE ARCHAEOLOGICAL AND CULTURAL HERITAGE THEME SENSITIVITY 12
 - MAP OF RELATIVE CIVIL AVIATION THEME SENSITIVITY 13
 - MAP OF RELATIVE DEFENCE THEME SENSITIVITY 14
 - MAP OF RELATIVE PALEONTOLOGY THEME SENSITIVITY 15
 - MAP OF RELATIVE PLANT SPECIES THEME SENSITIVITY 16
 - MAP OF RELATIVE TERRESTRIAL BIODIVERSITY THEME SENSITIVITY 17

Proposed Project Location

Orientation map 1: General location



Map of proposed site and relevant area(s)



Cadastral details of the proposed site

Property details:

No	Farm Name	Farm/ Erf No	Portion	Latitude	Longitude	Property Type
1	HENDRIK SE NIJL	106	0	27°57'24.28S	26°38'55.05E	Farm
2	TORONTO	115	0	27°59'33.06S	26°42'26.36E	Farm
3	KLIPPAN	14	0	28°1'45.3S	26°47'57.94E	Farm
4	THERONIA	71	0	27°59'58.33S	26°40'28.8E	Farm
5	WELKOM	41	0	27°58'51.49S	26°44'6.85E	Farm
6	STUIRMANS PAN	92	0	28°2'34.67S	26°46'12.39E	Farm
7	MIJANNIE	66	0	27°56'8.11S	26°41'9.62E	Farm
8	JACOBASRUST	118	0	27°58'24.55S	26°40'43.3E	Farm
9	MARMAGELI	20	0	28°1'50.89S	26°45'11.21E	Farm
10	NOOITGEDACHT	50	0	27°56'17.31S	26°40'3.88E	Farm
11	GOEDGEDACHT	53	0	27°57'7.27S	26°40'13.9E	Farm
12	BIESIEKUIL	19	0	27°57'59.53S	26°39'56.91E	Farm
13	RIETPAN	17	0	27°55'5.39S	26°40'39.52E	Farm
14	RIETPAN	17	0	27°55'2.6S	26°40'40.22E	Farm
15	VLAAPLAATS	125	0	28°0'36.6S	26°42'59.69E	Farm
16	OUDERS GIFT	48	0	27°54'58.27S	26°39'47.07E	Farm
17	SAAIPLAAS	690	0	28°0'45.62S	26°50'20.29E	Farm
18	ST. HELENA	42	0	28°1'55.57S	26°42'43.43E	Farm
19	RHEEDERS DAM	31	0	27°56'26.49S	26°40'42.48E	Farm
20	KAAL VALLEI DIAMOND MINE	12	0	28°1'59.59S	26°49'27.23E	Farm
21	TORONTO	115	7	27°59'23.4S	26°41'19.21E	Farm Portion
22	ST. HELENA	42	2	28°1'26.02S	26°42'49.38E	Farm Portion
23	NOOITGEDACHT	50	0	27°56'17.31S	26°40'3.88E	Farm Portion
24	BIESIEKUIL	19	0	27°57'59.53S	26°39'56.91E	Farm Portion
25	ST. HELENA	42	3	28°2'13.11S	26°43'53.48E	Farm Portion
26	GOEDGEDACHT	53	0	27°57'7.27S	26°40'13.9E	Farm Portion

27	THERONIA	71	7	27°59'30.44S	26°41'5.5E	Farm Portion
28	HENDRIK SE NIJL	106	0	27°57'24.28S	26°38'55.05E	Farm Portion
29	VLAKPLAATS	125	5	28°1'7.42S	26°42'53.41E	Farm Portion
30	THERONIA	71	1	28°0'7.91S	26°41'22.94E	Farm Portion
31	VLAKPLAATS	125	4	28°0'43.92S	26°42'50.87E	Farm Portion
32	ST. HELENA	42	0	28°1'41.57S	26°44'0.6E	Farm Portion
33	STUIRMANS PAN	92	1	28°2'57.2S	26°45'45.05E	Farm Portion
34	SAAIPLAAS	690	11	28°0'54.05S	26°48'50.2E	Farm Portion
35	KLIPPAN	14	1	28°0'45.06S	26°48'27.71E	Farm Portion
36	KLIPPAN	14	2	28°2'10.14S	26°47'43.56E	Farm Portion
37	SAAIPLAAS	690	12	28°1'11.36S	26°48'54.69E	Farm Portion
38	MARMAGELI	20	0	28°1'49.66S	26°45'15.56E	Farm Portion
39	VLAKPLAATS	125	3	28°0'18.64S	26°42'7.06E	Farm Portion
40	TORONTO	115	0	27°59'40.6S	26°41'52.25E	Farm Portion
41	SAAIPLAAS	690	4	28°0'20.02S	26°51'7.96E	Farm Portion
42	KLIPPAN	14	15	28°0'40.38S	26°48'45.56E	Farm Portion
43	STUIRMANS PAN	92	0	28°1'57.91S	26°46'22.14E	Farm Portion
44	MIJANNIE	66	0	27°55'56.85S	26°40'59.01E	Farm Portion
45	KAAL VALLEI DIAMOND MINE	12	0	28°1'55.82S	26°49'30.2E	Farm Portion
46	JACOBASRUST	118	0	27°58'23.36S	26°40'43.49E	Farm Portion
47	WELKOM	41	20	27°58'44.11S	26°41'15.27E	Farm Portion
48	OUDERS GIFT	48	0	27°54'58.54S	26°39'51.09E	Farm Portion
49	RIETPAN	17	0	27°55'25.36S	26°40'42.17E	Farm Portion
50	KAAL VALLEI DIAMOND MINE	12	1	28°1'38.79S	26°49'42.25E	Farm Portion
51	SAAIPLAAS	690	15	28°0'58.41S	26°50'13.91E	Farm Portion
52	SAAIPLAAS	690	8	28°1'7.11S	26°49'3.51E	Farm Portion
53	RHEEDERS DAM	31	0	27°56'23.42S	26°40'48.35E	Farm Portion
54	SAAIPLAAS	690	10	28°1'11.38S	26°49'7.54E	Farm Portion
55	STUIRMANS PAN	92	0	28°1'59.96S	26°46'23.7E	Farm Portion
56	SAAIPLAAS	690	1	28°0'57.18S	26°49'5.28E	Farm Portion
57	SAAIPLAAS	690	0	28°1'27.86S	26°49'51.07E	Farm Portion
58	RIETPAN	17	0	27°55'7.69S	26°40'46.82E	Farm Portion
59	SAAIPLAAS	690	9	28°1'2.11S	26°49'39.74E	Farm Portion

Development footprint¹ vertices:
No development footprint(s) specified.

Wind and Solar developments with an approved Environmental Authorisation or applications under consideration within 30 km of the proposed area

No	EIA Reference No	Classification	Status of application	Distance from proposed area (km)
1	14/12/16/3/3/2/376/2/AM6	Solar PV	Approved	24.7
2	14/12/16/3/3/2/2100	Solar PV	Approved	27.5
3	14/12/16/3/3/2/2217	Solar PV	Approved	17.1
4	14/12/16/3/3/2/2219	Solar PV	Approved	14.9
5	14/12/16/3/3/2/2283	Solar PV	Approved	15.7

¹ “development footprint”, means the area within the site on which the development will take place and includes all ancillary developments for example roads, power lines, boundary walls, paving etc. which require vegetation clearance or which will be disturbed and for which the application has been submitted.

6	14/12/16/3/3/1/1322	Solar PV	Approved	22.2
7	14/12/16/3/3/1/1472	Solar PV	Approved	2.1
8	14/12/16/3/3/2/376/1	Solar PV	Approved	24.7
9	14/12/16/3/3/1/2772	Solar PV	Approved	18.5
10	14/12/16/3/3/2/2233	Solar PV	Approved	13.2
11	14/12/16/3/3/2/2099	Solar PV	Approved	27.5
12	12/12/20/2668	Solar PV	Approved	26.6
13	12/12/20/2667	Solar PV	Approved	26.6
14	14/12/16/3/3/2/2221	Solar PV	Approved	14.9
15	14/12/16/3/3/2/2215	Solar PV	Approved	19.4
16	14/12/16/3/3/2/2218	Solar PV	Approved	13
17	14/12/16/3/3/2/2101	Solar PV	Approved	27.5
18	12/12/20/2669	Solar PV	Approved	12.5
19	14/12/16/3/3/2/2220	Solar PV	Approved	9.6
20	12/12/20/2669/A	Solar PV	Approved	12.5
21	14/12/16/3/3/2/2087	Solar PV	Approved	18.5
22	14/12/16/3/3/2/2091	Solar PV	Approved	2.2
23	12/12/20/2666	Solar PV	Approved	18.7
24	14/12/16/3/3/2/2322	Solar PV	Approved	18.2
25	14/12/16/3/3/2/2163	Solar PV	Approved	15.2
26	14/12/16/3/3/2/2230	Solar PV	Approved	13
27	14/12/16/3/3/1/644	Solar PV	Approved	24.7
28	14/12/16/3/3/2/376/AM2	Solar PV	Approved	24.7
29	14/12/16/3/3/2/2299	Solar PV	Approved	15.7
30	14/12/16/3/3/1/1471	Solar PV	Approved	0
31	14/12/16/3/3/1/1471/AM1	Solar PV	Approved	0
32	12/12/20/2666/A	Solar PV	Approved	18.7
33	14/12/16/3/3/1/2410	Solar PV	Approved	0
34	14/12/16/3/3/1/2499	Solar PV	Approved	24.7
35	14/12/16/3/3/1/2399	Solar PV	Approved	26.6
36	14/12/16/3/3/2/2297	Solar PV	Approved	15.7
37	14/12/16/3/3/1/1444	Solar PV	Approved	7.6
38	14/12/16/3/3/1/644/AM1	Solar PV	Approved	24.7
39	14/12/16/3/3/2/512	Solar PV	Approved	12
40	14/12/16/3/3/2/2214	Solar PV	Approved	15.7
41	14/12/16/3/3/2/376/2	Solar PV	Approved	24.7

Environmental Management Frameworks relevant to the application

No intersections with EMF areas found.

Environmental screening results and assessment outcomes

The following sections contain a summary of any development incentives, restrictions, exclusions or prohibitions that apply to the proposed development site as well as the most environmental sensitive features on the site based on the site sensitivity screening results for the application classification that was selected. The application classification selected for this report is:

Mining | Beneficiation | Mineral.

Relevant development incentives, restrictions, exclusions or prohibitions

The following development incentives, restrictions, exclusions or prohibitions and their implications that apply to this site are indicated below.

Incentive, restriction or prohibition	Implication
Strategic Transmission Corridor-Central corridor	https://screening.environment.gov.za/ScreeningDownloads/DevelopmentZones/Combined_EGI.pdf
Main Electricity Distribution Substation	https://screening.environment.gov.za/ScreeningDownloads/DevelopmentZones/Distribution_Transmission.pdf

Proposed Development Area Environmental Sensitivity

The following summary of the development site environmental sensitivities is identified. Only the highest environmental sensitivity is indicated. The footprint environmental sensitivities for the proposed development footprint as identified, are indicative only and must be verified on site by a suitably qualified person before the specialist assessments identified below can be confirmed.

Theme	Very High sensitivity	High sensitivity	Medium sensitivity	Low sensitivity
Agriculture Theme		X		
Animal Species Theme		X		
Aquatic Biodiversity Theme	X			
Archaeological and Cultural Heritage Theme				X
Civil Aviation Theme		X		
Defence Theme				X
Paleontology Theme	X			
Plant Species Theme	X			
Terrestrial Biodiversity Theme	X			

Specialist assessments identified

Based on the selected classification, and the known impacts associated with the proposed development, the following list of specialist assessments have been identified for inclusion in the assessment report. It is the responsibility of the EAP to confirm this list and to motivate in the assessment report, the reason for not including any of the identified specialist study including the provision of photographic evidence of the site situation.

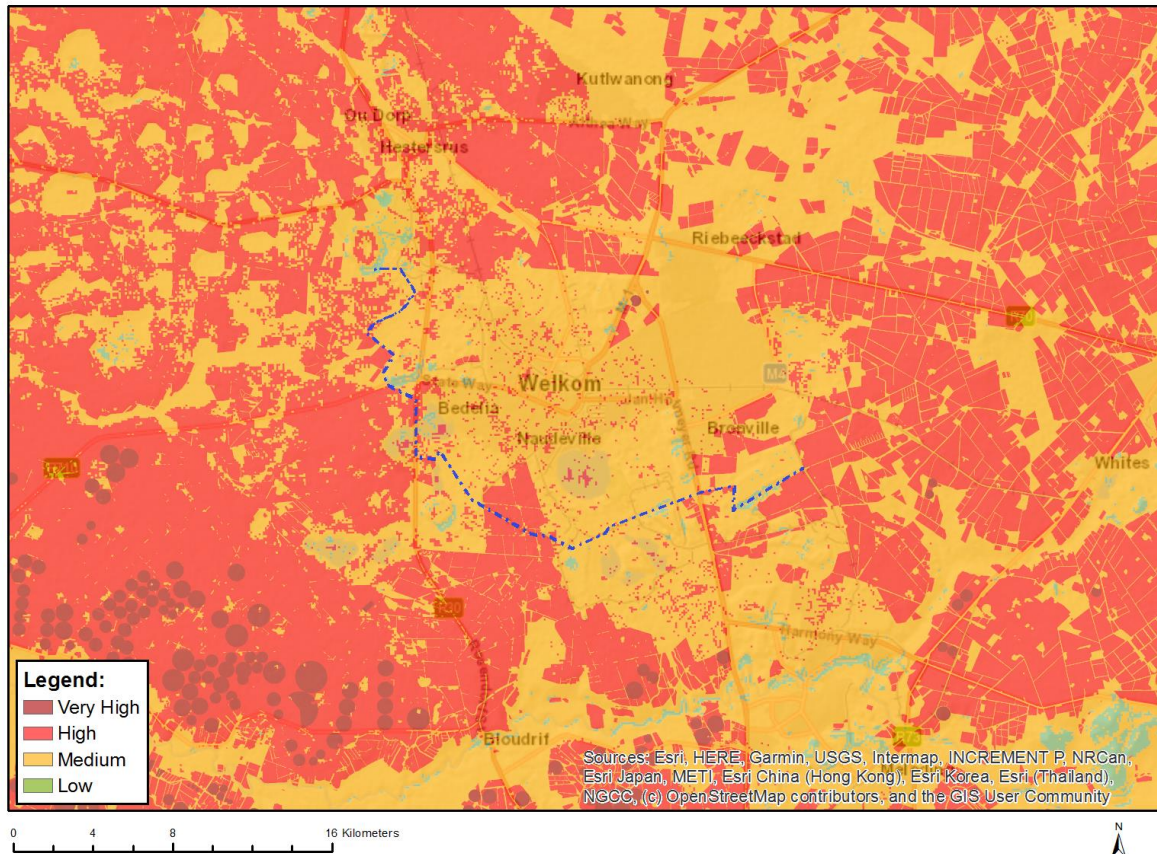
No	Specialist assessment	Assessment Protocol
1	Agricultural Impact Assessment	https://screening.environment.gov.za/ScreeningDownloads/AssessmentProtocols/Gazetted_General_Agriculture_Assessment_Protocols.pdf
2	Archaeological and Cultural Heritage Impact Assessment	https://screening.environment.gov.za/ScreeningDownloads/AssessmentProtocols/Gazetted_General_Requirement_Assessment_Protocols.pdf
3	Palaeontology Impact Assessment	https://screening.environment.gov.za/ScreeningDownloads/AssessmentProtocols/Gazetted_General_Requirement_Assessment_Protocols.pdf
4	Terrestrial Biodiversity Impact Assessment	https://screening.environment.gov.za/ScreeningDownloads/AssessmentProtocols/Gazetted_Terrestrial_Biodiversity_Assessment_Protocols.pdf
5	Aquatic Biodiversity	https://screening.environment.gov.za/ScreeningDownloads/AssessmentProtocols/Gazetted_Aquatic_Biodiversity_Assessment_Protocols.pdf

	Impact Assessment	ssmentProtocols/Gazetted Aquatic Biodiversity Assessment Protocols.pdf
6	Hydrology Assessment	https://screening.environment.gov.za/ScreeningDownloads/AssessmentProtocols/Gazetted General Requirement Assessment Protocols.pdf
7	Noise Impact Assessment	https://screening.environment.gov.za/ScreeningDownloads/AssessmentProtocols/Gazetted Noise Impacts Assessment Protocol.pdf
8	Traffic Impact Assessment	https://screening.environment.gov.za/ScreeningDownloads/AssessmentProtocols/Gazetted General Requirement Assessment Protocols.pdf
9	Geotechnical Assessment	https://screening.environment.gov.za/ScreeningDownloads/AssessmentProtocols/Gazetted General Requirement Assessment Protocols.pdf
10	Climate Impact Assessment	https://screening.environment.gov.za/ScreeningDownloads/AssessmentProtocols/Gazetted General Requirement Assessment Protocols.pdf
11	Health Impact Assessment	https://screening.environment.gov.za/ScreeningDownloads/AssessmentProtocols/Gazetted General Requirement Assessment Protocols.pdf
12	Socio-Economic Assessment	https://screening.environment.gov.za/ScreeningDownloads/AssessmentProtocols/Gazetted General Requirement Assessment Protocols.pdf
13	Ambient Air Quality Impact Assessment	https://screening.environment.gov.za/ScreeningDownloads/AssessmentProtocols/Gazetted General Requirement Assessment Protocols.pdf
14	Air Quality Impact Assessment	https://screening.environment.gov.za/ScreeningDownloads/AssessmentProtocols/Gazetted General Requirement Assessment Protocols.pdf
15	Plant Species Assessment	https://screening.environment.gov.za/ScreeningDownloads/AssessmentProtocols/Gazetted Plant Species Assessment Protocols.pdf
16	Animal Species Assessment	https://screening.environment.gov.za/ScreeningDownloads/AssessmentProtocols/Gazetted Animal Species Assessment Protocols.pdf

Results of the environmental sensitivity of the proposed area.

The following section represents the results of the screening for environmental sensitivity of the proposed site for relevant environmental themes associated with the project classification. It is the duty of the EAP to ensure that the environmental themes provided by the screening tool are comprehensive and complete for the project. Refer to the disclaimer.

MAP OF RELATIVE AGRICULTURE THEME SENSITIVITY

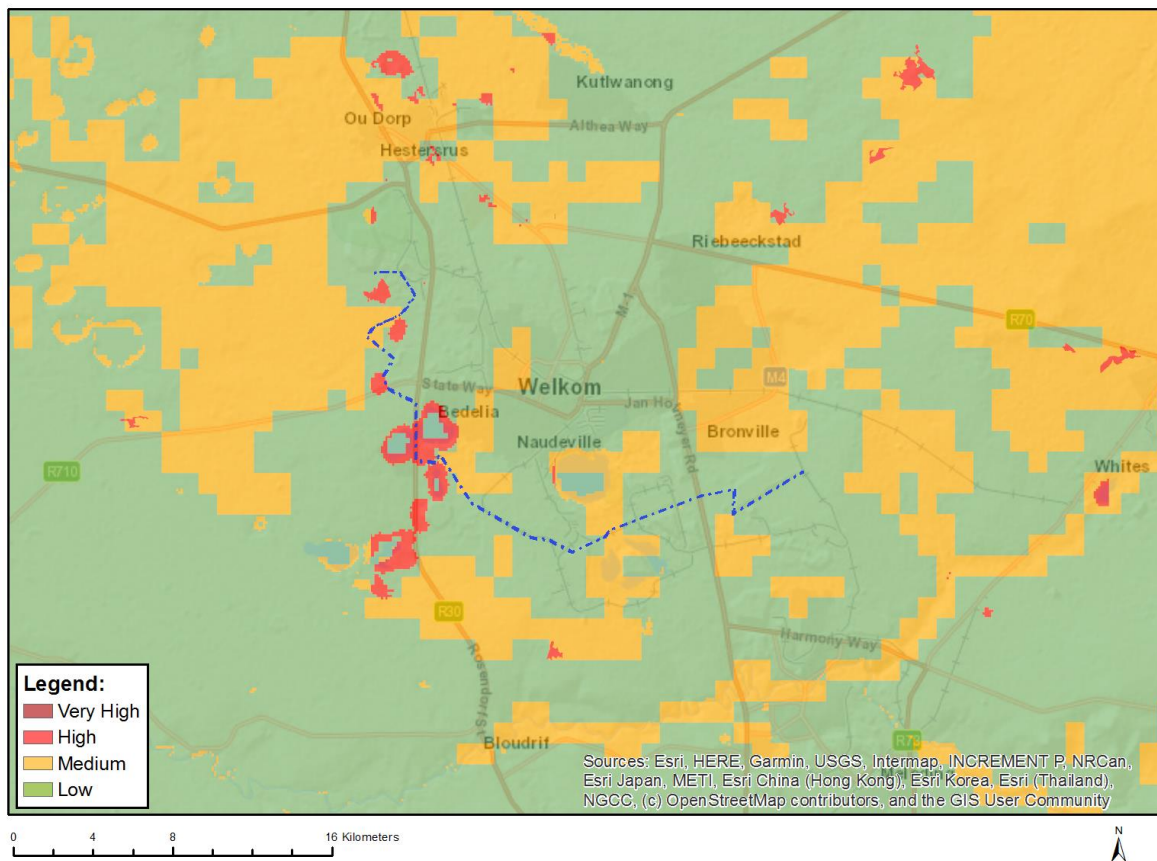


Very High sensitivity	High sensitivity	Medium sensitivity	Low sensitivity
	X		

Sensitivity Features:

Sensitivity	Feature(s)
High	Land capability;09. Moderate-High/10. Moderate-High
High	Annual Crop Cultivation / Planted Pastures Rotation;Land capability;06. Low-Moderate/07. Low-Moderate/08. Moderate
High	Annual Crop Cultivation / Planted Pastures Rotation;Land capability;09. Moderate-High/10. Moderate-High
High	Old Fields;Land capability;09. Moderate-High/10. Moderate-High
High	Old Fields;Land capability;06. Low-Moderate/07. Low-Moderate/08. Moderate
Low	Land capability;01. Very low/02. Very low/03. Low-Very low/04. Low-Very low/05. Low
Medium	Land capability;06. Low-Moderate/07. Low-Moderate/08. Moderate

MAP OF RELATIVE ANIMAL SPECIES THEME SENSITIVITY



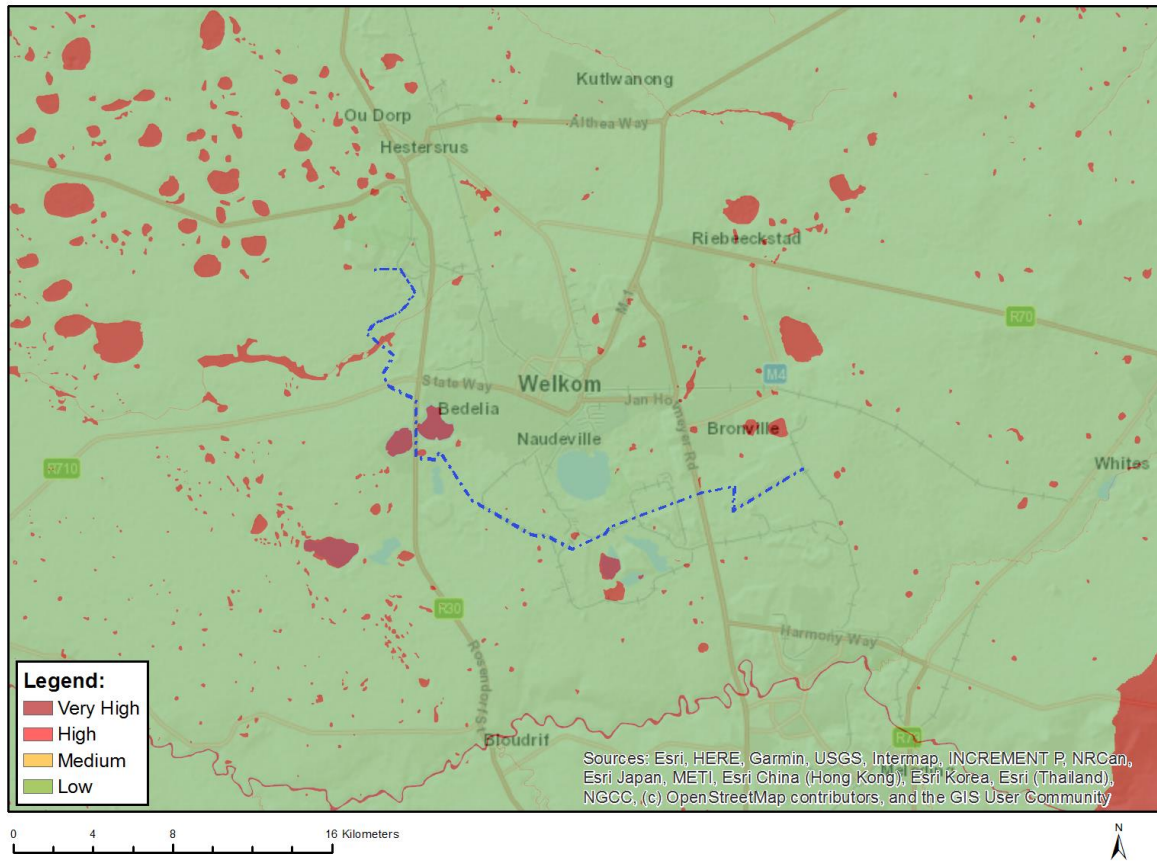
Where only a sensitive plant unique number or sensitive animal unique number is provided in the screening report and an assessment is required, the environmental assessment practitioner (EAP) or specialist is required to email SANBI at eiadatarequests@sanbi.org.za listing all sensitive species with their unique identifiers for which information is required. The name has been withheld as the species may be prone to illegal harvesting and must be protected. SANBI will release the actual species name after the details of the EAP or specialist have been documented.

Very High sensitivity	High sensitivity	Medium sensitivity	Low sensitivity
	X		

Sensitivity Features:

Sensitivity	Feature(s)
High	Aves-Mycteria ibis
Low	Subject to confirmation
Medium	Aves-Hydroprogne caspia
Medium	Mammalia-Hydrictis maculicollis
Medium	Sensitive species 15

MAP OF RELATIVE AQUATIC BIODIVERSITY THEME SENSITIVITY

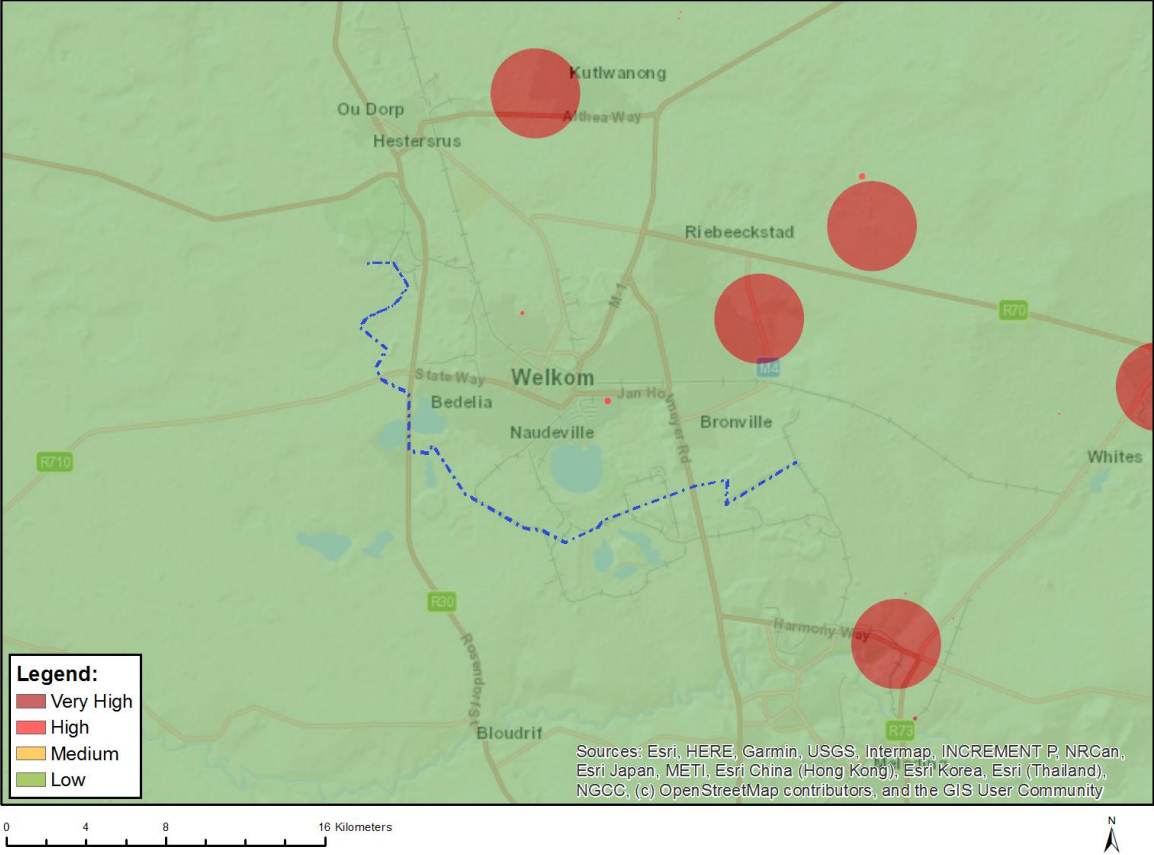


Very High sensitivity	High sensitivity	Medium sensitivity	Low sensitivity
X			

Sensitivity Features:

Sensitivity	Feature(s)
Low	Low sensitivity
Very High	Rivers_Z
Very High	Wetlands_Dry Highveld Grassland Bioregion (Valley-bottom)

MAP OF RELATIVE ARCHAEOLOGICAL AND CULTURAL HERITAGE THEME SENSITIVITY

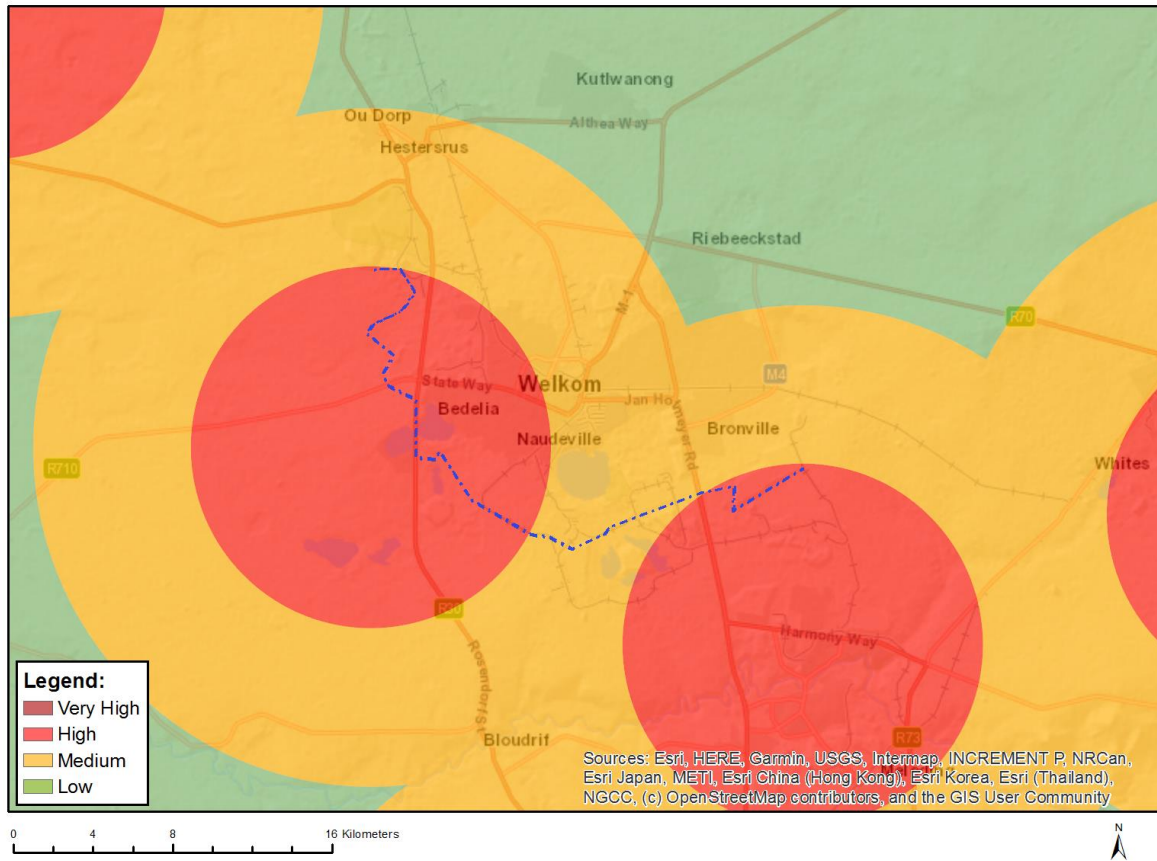


Very High sensitivity	High sensitivity	Medium sensitivity	Low sensitivity
			X

Sensitivity Features:

Sensitivity	Feature(s)
Low	Low sensitivity

MAP OF RELATIVE CIVIL AVIATION THEME SENSITIVITY

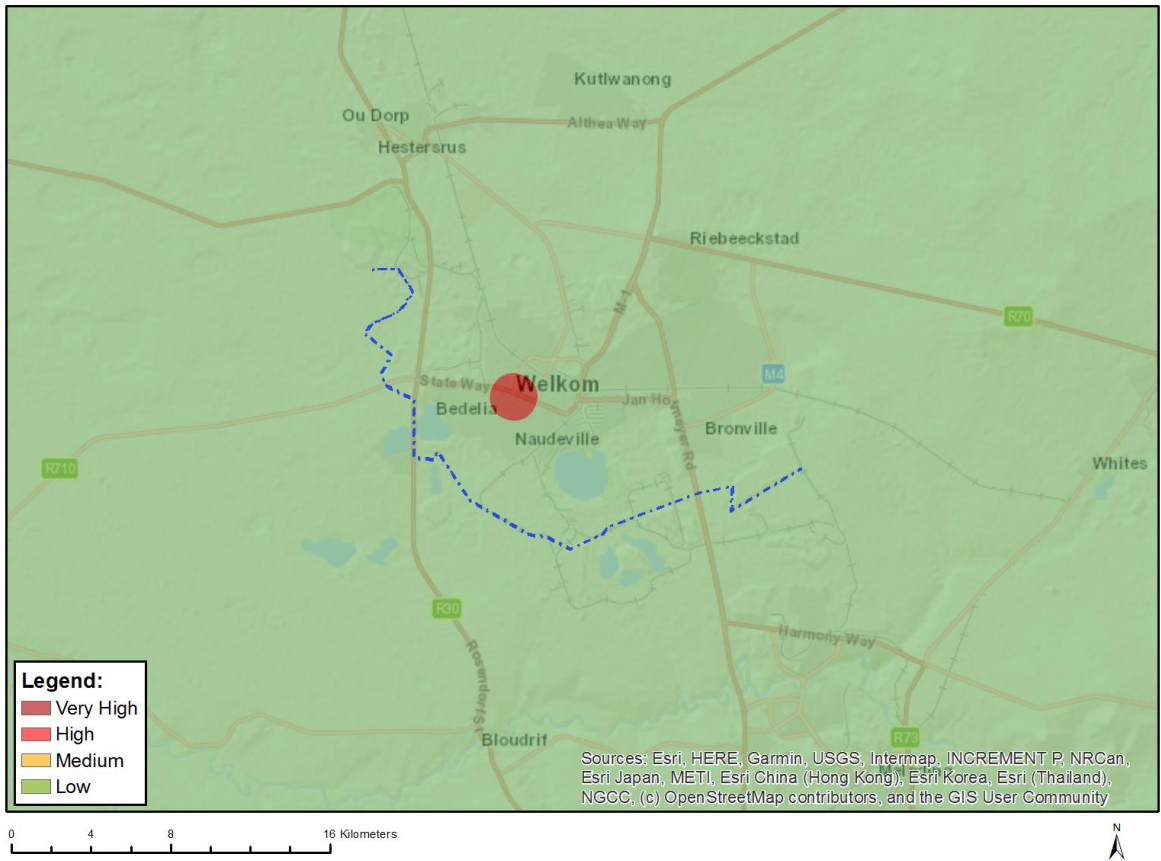


Very High sensitivity	High sensitivity	Medium sensitivity	Low sensitivity
	X		

Sensitivity Features:

Sensitivity	Feature(s)
High	Within 8 km of other civil aviation aerodrome
Medium	Within 5 km of an air traffic control or navigation site
Medium	Between 8 and 15 km of other civil aviation aerodrome

MAP OF RELATIVE DEFENCE THEME SENSITIVITY

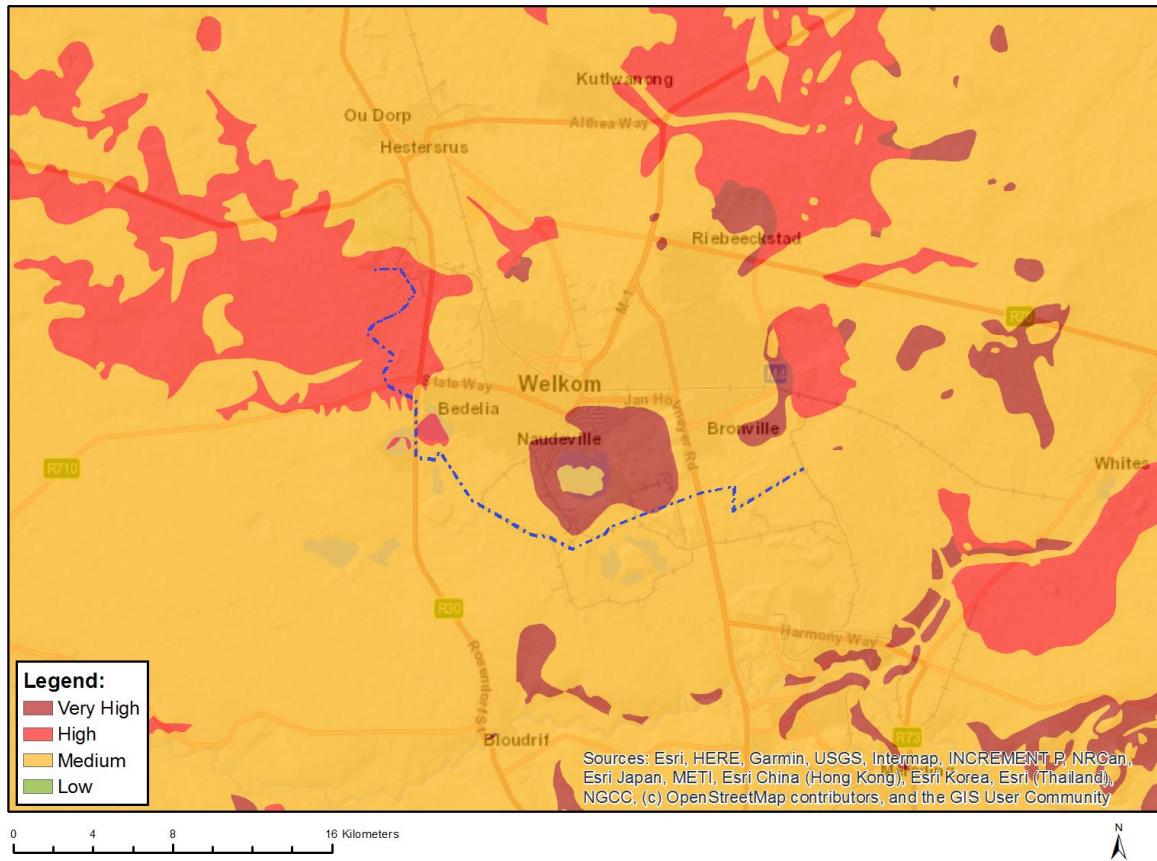


Very High sensitivity	High sensitivity	Medium sensitivity	Low sensitivity
			X

Sensitivity Features:

Sensitivity	Feature(s)
Low	Low Sensitivity

MAP OF RELATIVE PALEONTOLOGY THEME SENSITIVITY

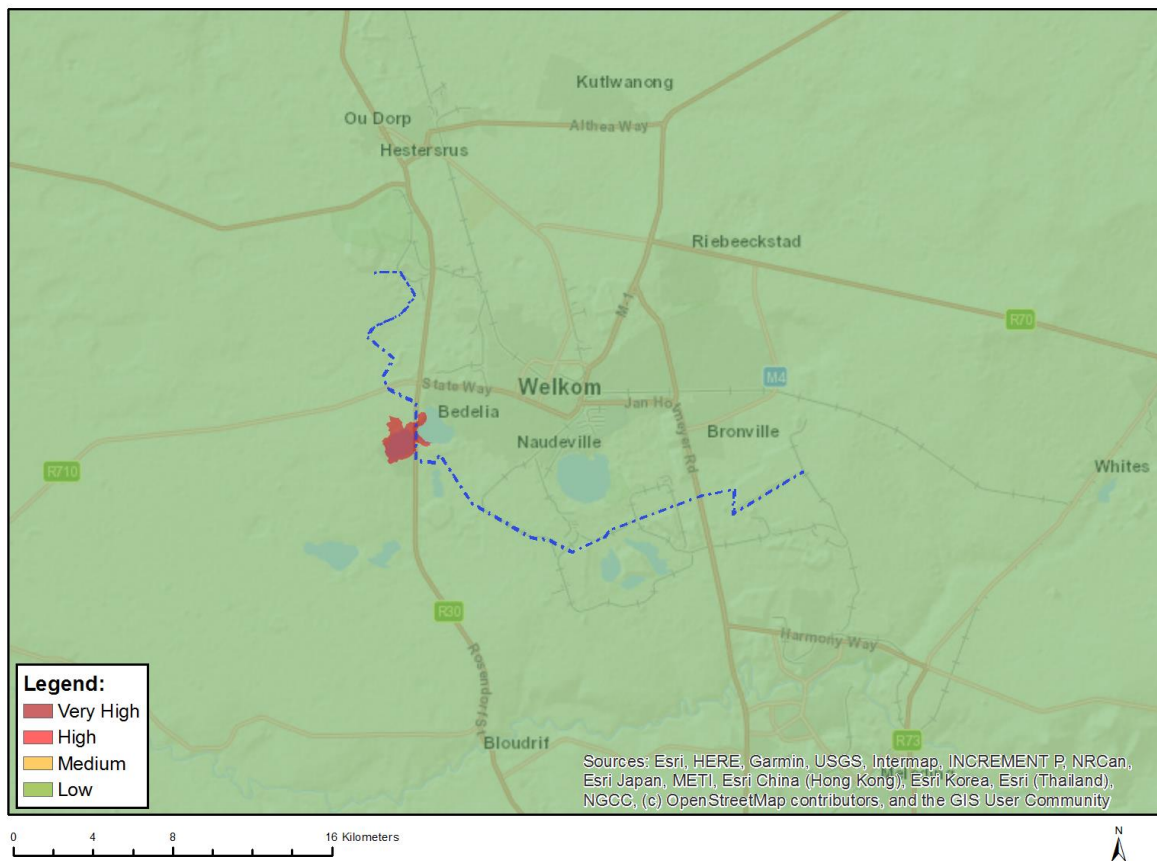


Very High sensitivity	High sensitivity	Medium sensitivity	Low sensitivity
X			

Sensitivity Features:

Sensitivity	Feature(s)
High	Features with a High paleontological sensitivity
Medium	Features with a Medium paleontological sensitivity
Very High	Features with a Very High paleontological sensitivity

MAP OF RELATIVE PLANT SPECIES THEME SENSITIVITY



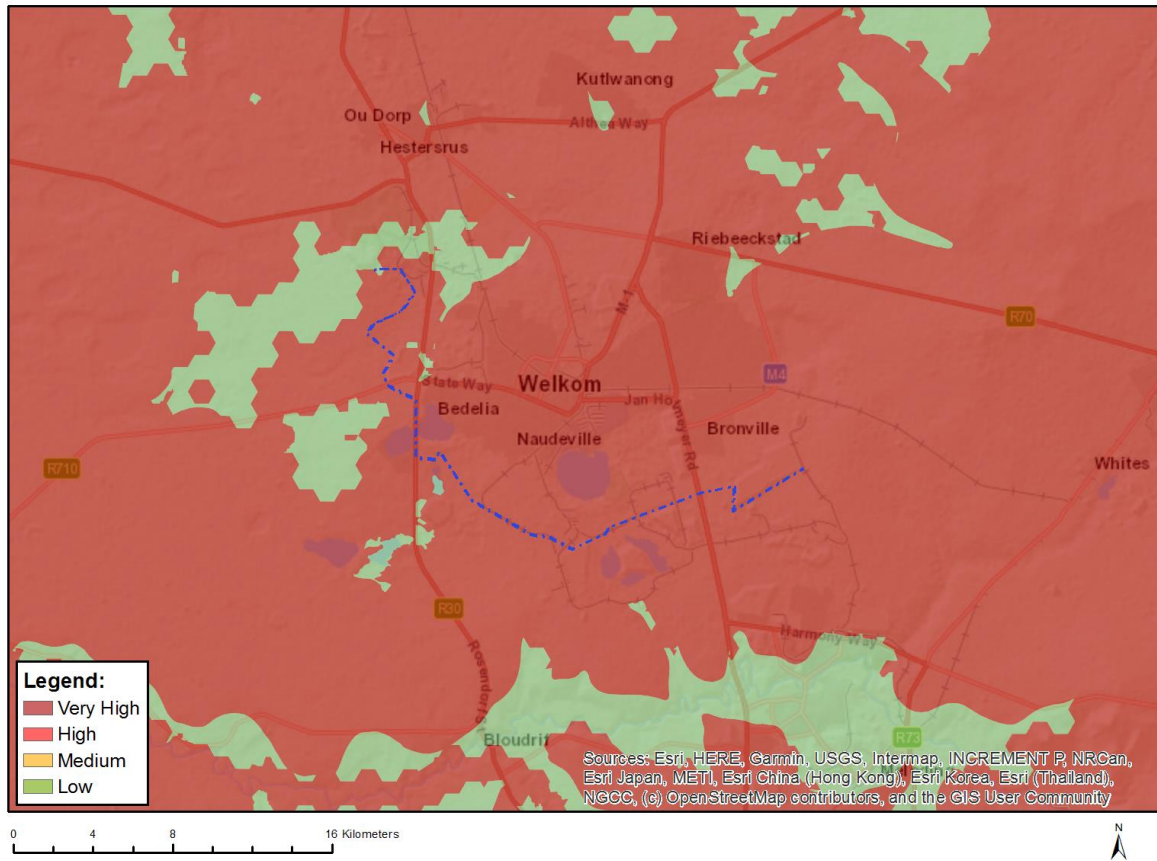
Where only a sensitive plant unique number or sensitive animal unique number is provided in the screening report and an assessment is required, the environmental assessment practitioner (EAP) or specialist is required to email SANBI at eiadatarequests@sanbi.org.za listing all sensitive species with their unique identifiers for which information is required. The name has been withheld as the species may be prone to illegal harvesting and must be protected. SANBI will release the actual species name after the details of the EAP or specialist have been documented.

Very High sensitivity	High sensitivity	Medium sensitivity	Low sensitivity
X			

Sensitivity Features:

Sensitivity	Feature(s)
Low	Low Sensitivity
Very High	Sensitive species 164

MAP OF RELATIVE TERRESTRIAL BIODIVERSITY THEME SENSITIVITY



Very High sensitivity	High sensitivity	Medium sensitivity	Low sensitivity
X			

Sensitivity Features:

Sensitivity	Feature(s)
Low	Low Sensitivity
Very High	CBA 1
Very High	ESA 1
Very High	ESA 2
Very High	EN_Vaal-Vet Sandy Grassland

**SCREENING REPORT FOR AN ENVIRONMENTAL AUTHORIZATION AS
REQUIRED BY THE 2014 EIA REGULATIONS – PROPOSED DEVELOPMENT
FOOTPRINT ENVIRONMENTAL SENSITIVITY**

EIA Reference number:

Project name: Nooitgedacht Water Facility

Project title: Nooitgedacht Water Facility

Date screening report generated: 14/04/2025 10:04:28

Applicant: Harmony Gold

Compiler: John von Mayer

Compiler signature:


.....

Application Category: Mining|Beneficiation|Mineral

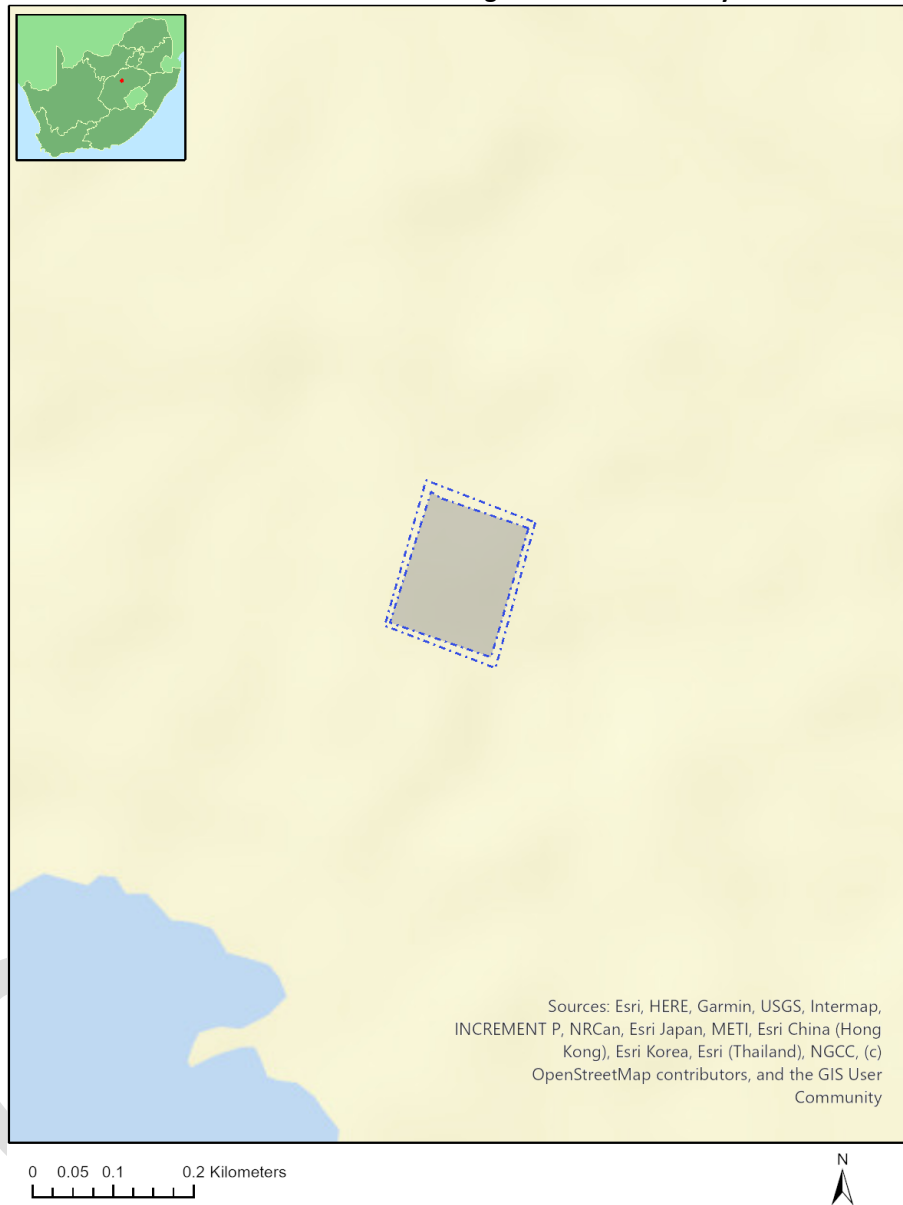
Table of Contents

Proposed Project Location	3
Orientation map 1: General location	3
Map of proposed site and relevant area(s)	4
Cadastral details of the proposed site	4
Wind and Solar developments with an approved Environmental Authorisation or applications under consideration within 30 km of the proposed area	4
Environmental Management Frameworks relevant to the application	5
Environmental screening results and assessment outcomes	6
Relevant development incentives, restrictions, exclusions or prohibitions	6
Proposed Development Area Environmental Sensitivity	6
Specialist assessments identified	6
Results of the environmental sensitivity of the proposed area	8
MAP OF RELATIVE AGRICULTURE THEME SENSITIVITY	8
MAP OF RELATIVE ANIMAL SPECIES THEME SENSITIVITY	9
MAP OF RELATIVE AQUATIC BIODIVERSITY THEME SENSITIVITY	10
MAP OF RELATIVE ARCHAEOLOGICAL AND CULTURAL HERITAGE THEME SENSITIVITY	11
MAP OF RELATIVE CIVIL AVIATION THEME SENSITIVITY	12
MAP OF RELATIVE DEFENCE THEME SENSITIVITY	13
MAP OF RELATIVE PALEONTOLOGY THEME SENSITIVITY	14
MAP OF RELATIVE PLANT SPECIES THEME SENSITIVITY	15
MAP OF RELATIVE TERRESTRIAL BIODIVERSITY THEME SENSITIVITY	16

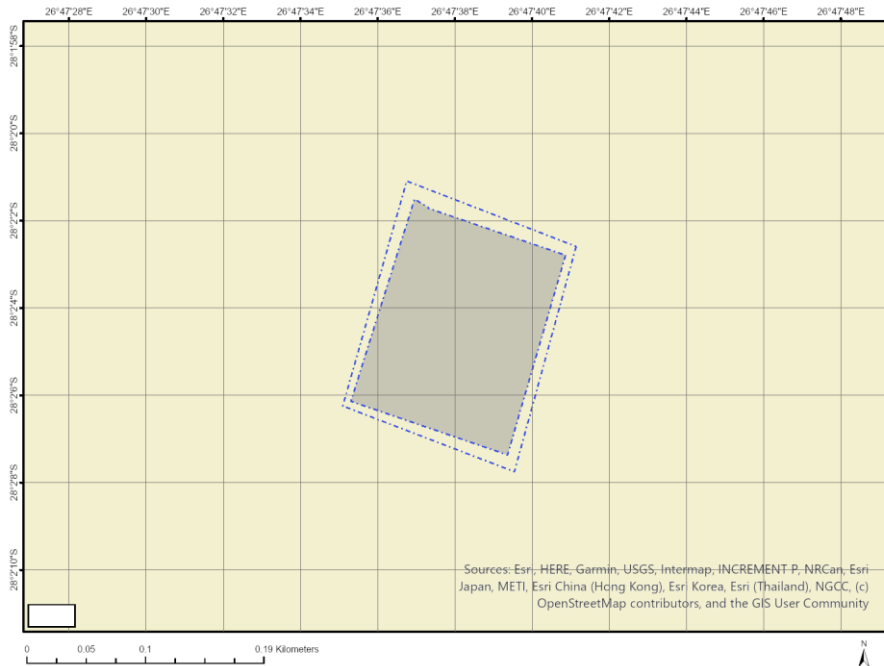
Proposed Project Location

Orientation map 1: General location

General Orientation: Nooitgedacht Water Facility



Map of proposed site and relevant area(s)



Cadastral details of the proposed site

Property details:

No	Farm Name	Farm/ Erf No	Portion	Latitude	Longitude	Property Type
1	KLIPPAN	14	0	28°1'45.3S	26°47'57.94E	Farm
2	KLIPPAN	14	2	28°2'10.14S	26°47'43.56E	Farm Portion

Development footprint¹ vertices:

Footprint	Latitude	Longitude
1	28°2'1.71S	26°47'37.3E
1	28°2'2.79S	26°47'40.87E
1	28°2'7.37S	26°47'39.36E
1	28°2'6.14S	26°47'35.31E
1	28°2'1.51S	26°47'36.95E
1	28°2'1.71S	26°47'37.34E
1	28°2'1.71S	26°47'37.3E

Wind and Solar developments with an approved Environmental Authorisation or applications under consideration within 30 km of the proposed area

¹ “development footprint”, means the area within the site on which the development will take place and includes all ancillary developments for example roads, power lines, boundary walls, paving etc. which require vegetation clearance or which will be disturbed and for which the application has been submitted.

No	EIA Reference No	Classification	Status of application	Distance from proposed area (km)
1	12/12/20/2669	Solar PV	Approved	13.5
2	14/12/16/3/3/2/2099	Solar PV	Approved	29.5
3	14/12/16/3/3/1/2399	Solar PV	Approved	27
4	14/12/16/3/3/2/2420	Solar PV	Approved	21.8
5	14/12/16/3/3/2/2422	Solar PV	Approved	16.9
6	14/12/16/3/3/2/2299	Solar PV	Approved	15.5
7	14/12/16/3/3/2/2220	Solar PV	Approved	14.8
8	14/12/16/3/3/2/2428	Solar PV	Approved	18.5
9	14/12/16/3/3/2/2218	Solar PV	Approved	16.1
10	14/12/16/3/3/1/1444	Solar PV	Approved	22.1
11	14/12/16/3/3/2/526	Solar PV	Approved	16.6
12	14/12/16/3/3/2/2087	Solar PV	Approved	18.3
13	14/12/16/3/3/1/2772	Solar PV	Approved	18.3
14	14/12/16/3/3/2/2233	Solar PV	Approved	21.3
15	14/12/16/3/3/2/580	Solar PV	Approved	10.5
16	14/12/16/3/3/2/2421	Solar PV	Approved	17.6
17	12/12/20/2669/A	Solar PV	Approved	13.5
18	12/12/20/2668	Solar PV	Approved	27
19	14/12/16/3/3/1/1472	Solar PV	Approved	15.8
20	14/12/16/3/3/2/512	Solar PV	Approved	20
21	14/12/16/3/3/2/2414	Solar PV	Approved	16
22	14/12/16/3/3/2/2423	Solar PV	Approved	16.9
23	14/12/16/3/3/2/2100	Solar PV	Approved	29.5
24	12/12/20/2666/A	Solar PV	Approved	20.2
25	14/12/16/3/3/2/2230	Solar PV	Approved	13.8
26	12/12/20/2667	Solar PV	Approved	27
27	12/12/20/2666	Solar PV	Approved	20.2
28	14/12/16/3/3/2/2215	Solar PV	Approved	19.7
29	14/12/16/3/3/1/1471/AM1	Solar PV	Approved	15
30	14/12/16/3/3/2/2283	Solar PV	Approved	15.5
31	14/12/16/3/3/2/581	Solar PV	Approved	14.9
32	14/12/16/3/3/2/2219	Solar PV	Approved	18.9
33	14/12/16/3/3/2/2429	Solar PV	Approved	9.4
34	14/12/16/3/3/2/2217	Solar PV	Approved	17.7
35	14/12/16/3/3/1/1471	Solar PV	Approved	15
36	14/12/16/3/3/1/2410	Solar PV	Approved	11.9
37	14/12/16/3/3/2/2091	Solar PV	Approved	17.5
38	14/12/16/3/3/2/2163	Solar PV	Approved	16.6
39	14/12/16/3/3/2/2214	Solar PV	Approved	15.5
40	14/12/16/3/3/2/2297	Solar PV	Approved	15.5
41	14/12/16/3/3/2/2322	Solar PV	Approved	18.6
42	14/12/16/3/3/2/2415	Solar PV	Approved	11.4
43	14/12/16/3/3/2/2221	Solar PV	Approved	19.6
44	14/12/16/3/3/1/1322	Solar PV	Approved	29.7
45	14/12/16/3/3/2/2101	Solar PV	Approved	29.5

Environmental Management Frameworks relevant to the application

No intersections with EMF areas found.

Environmental screening results and assessment outcomes

The following sections contain a summary of any development incentives, restrictions, exclusions or prohibitions that apply to the proposed development footprint as well as the most environmental sensitive features on the footprint based on the footprint sensitivity screening results for the application classification that was selected. The application classification selected for this report is:

Mining | Beneficiation | Mineral.

Relevant development incentives, restrictions, exclusions or prohibitions

The following development incentives, restrictions, exclusions or prohibitions and their implications that apply to this footprint are indicated below.

Incentive, restriction or prohibition	Implication
Strategic Transmission Corridor-Central corridor	https://screening.environment.gov.za/ScreeningDownloads/DevelopmentZones/Combined_EGI.pdf

Proposed Development Area Environmental Sensitivity

The following summary of the development footprint environmental sensitivities is identified. Only the highest environmental sensitivity is indicated. The footprint environmental sensitivities for the proposed development footprint as identified, are indicative only and must be verified on site by a suitably qualified person before the specialist assessments identified below can be confirmed.

Theme	Very High sensitivity	High sensitivity	Medium sensitivity	Low sensitivity
Agriculture Theme		X		
Animal Species Theme			X	
Aquatic Biodiversity Theme				X
Archaeological and Cultural Heritage Theme				X
Civil Aviation Theme			X	
Defence Theme				X
Paleontology Theme			X	
Plant Species Theme				X
Terrestrial Biodiversity Theme	X			

Specialist assessments identified

Based on the selected classification, and the known impacts associated with the proposed development, the following list of specialist assessments have been identified for inclusion in the assessment report. It is the responsibility of the EAP to confirm this list and to motivate in the assessment report, the reason for not including any of the identified specialist study including the provision of photographic evidence of the footprint situation.

No	Specialist assessment	Assessment Protocol
1	Agricultural Impact Assessment	https://screening.environment.gov.za/ScreeningDownloads/Asse

		ssmentProtocols/Gazetted General Agriculture Assessment Protocols.pdf
2	Archaeological and Cultural Heritage Impact Assessment	https://screening.environment.gov.za/ScreeningDownloads/AssessmentProtocols/GuidanceforHIA.pdf
3	Palaeontology Impact Assessment	https://screening.environment.gov.za/ScreeningDownloads/AssessmentProtocols/GuidanceforPIA.pdf
4	Terrestrial Biodiversity Impact Assessment	https://screening.environment.gov.za/ScreeningDownloads/AssessmentProtocols/Gazetted Terrestrial Biodiversity Assessment Protocols.pdf
5	Aquatic Biodiversity Impact Assessment	https://screening.environment.gov.za/ScreeningDownloads/AssessmentProtocols/Gazetted Aquatic Biodiversity Assessment Protocols.pdf
6	Hydrology Assessment	https://screening.environment.gov.za/ScreeningDownloads/AssessmentProtocols/Gazetted General Requirement Assessment Protocols.pdf
7	Noise Impact Assessment	https://screening.environment.gov.za/ScreeningDownloads/AssessmentProtocols/Gazetted Noise Impacts Assessment Protocol.pdf
8	Traffic Impact Assessment	https://screening.environment.gov.za/ScreeningDownloads/AssessmentProtocols/Gazetted General Requirement Assessment Protocols.pdf
9	Geotechnical Assessment	https://screening.environment.gov.za/ScreeningDownloads/AssessmentProtocols/Gazetted General Requirement Assessment Protocols.pdf
10	Climate Impact Assessment	https://screening.environment.gov.za/ScreeningDownloads/AssessmentProtocols/Gazetted General Requirement Assessment Protocols.pdf
11	Health Impact Assessment	https://screening.environment.gov.za/ScreeningDownloads/AssessmentProtocols/Gazetted General Requirement Assessment Protocols.pdf
12	Socio-Economic Assessment	https://screening.environment.gov.za/ScreeningDownloads/AssessmentProtocols/Gazetted General Requirement Assessment Protocols.pdf
13	Ambient Air Quality Impact Assessment	https://screening.environment.gov.za/ScreeningDownloads/AssessmentProtocols/Gazetted General Requirement Assessment Protocols.pdf
14	Air Quality Impact Assessment	https://screening.environment.gov.za/ScreeningDownloads/AssessmentProtocols/Gazetted General Requirement Assessment Protocols.pdf
15	Plant Species Assessment	https://screening.environment.gov.za/ScreeningDownloads/AssessmentProtocols/Gazetted Plant Species Assessment Protocols.pdf
16	Animal Species Assessment	https://screening.environment.gov.za/ScreeningDownloads/AssessmentProtocols/Gazetted Animal Species Assessment Protocols.pdf

Results of the environmental sensitivity of the proposed area.

The following section represents the results of the screening for environmental sensitivity of the proposed footprint for relevant environmental themes associated with the project classification. It is the duty of the EAP to ensure that the environmental themes provided by the screening tool are comprehensive and complete for the project. Refer to the disclaimer.

MAP OF RELATIVE AGRICULTURE THEME SENSITIVITY

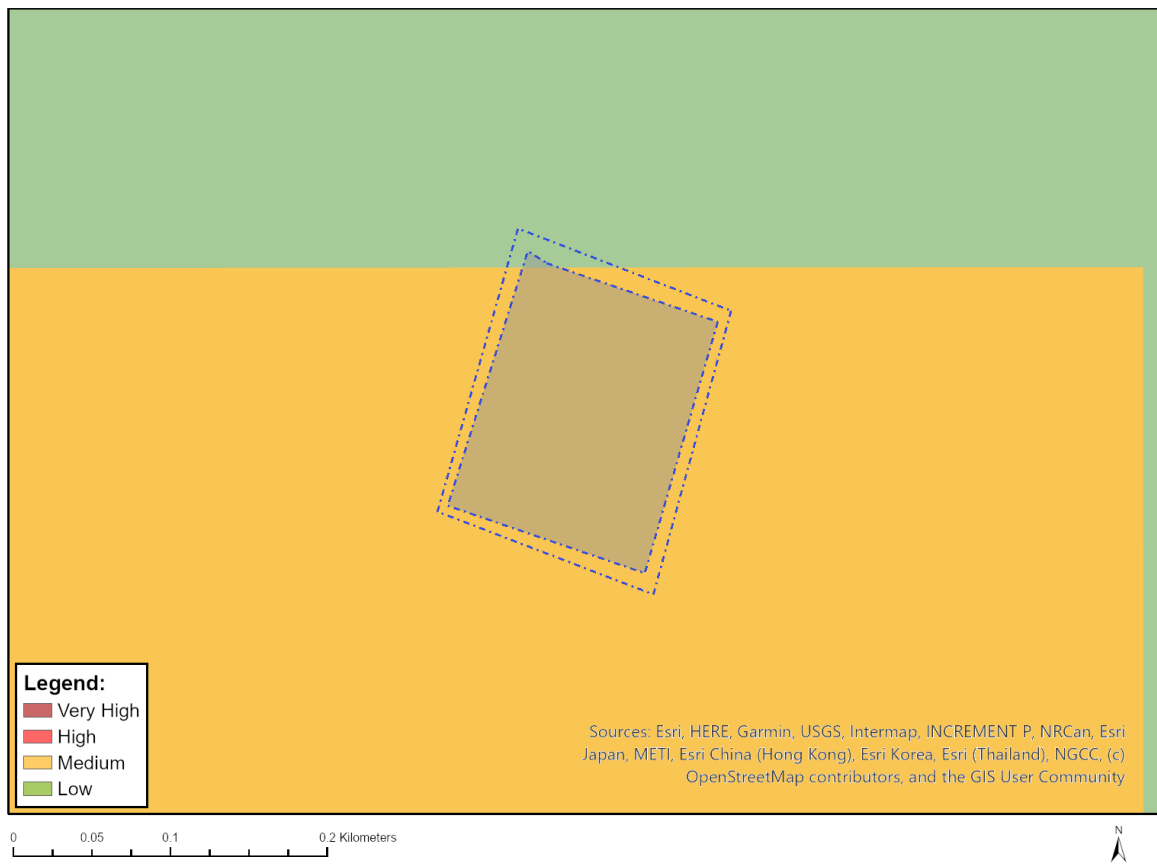


Very High sensitivity	High sensitivity	Medium sensitivity	Low sensitivity
	X		

Sensitivity Features:

Sensitivity	Feature(s)
High	08. Moderate
Medium	06. Low-Moderate
Medium	07. Low-Moderate

MAP OF RELATIVE ANIMAL SPECIES THEME SENSITIVITY



Where only a sensitive plant unique number or sensitive animal unique number is provided in the screening report and an assessment is required, the environmental assessment practitioner (EAP) or specialist is required to email SANBI at eiadatarequests@sanbi.org.za listing all sensitive species with their unique identifiers for which information is required. The name has been withheld as the species may be prone to illegal harvesting and must be protected. SANBI will release the actual species name after the details of the EAP or specialist have been documented.

Very High sensitivity	High sensitivity	Medium sensitivity	Low sensitivity
		X	

Sensitivity Features:

Sensitivity	Feature(s)
Low	Subject to confirmation
Medium	Mammalia-Hydriectis maculicollis

MAP OF RELATIVE AQUATIC BIODIVERSITY THEME SENSITIVITY

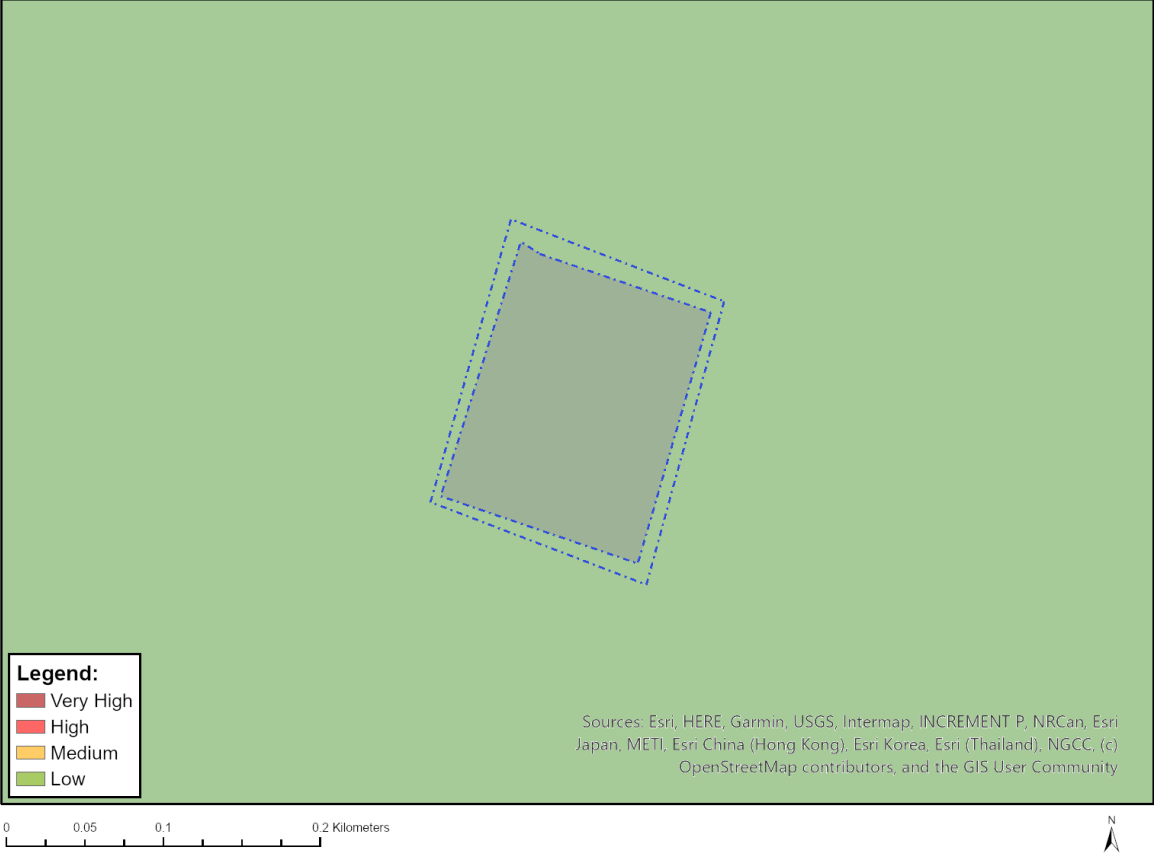


Very High sensitivity	High sensitivity	Medium sensitivity	Low sensitivity
			X

Sensitivity Features:

Sensitivity	Feature(s)
Low	Low sensitivity

MAP OF RELATIVE ARCHAEOLOGICAL AND CULTURAL HERITAGE THEME SENSITIVITY

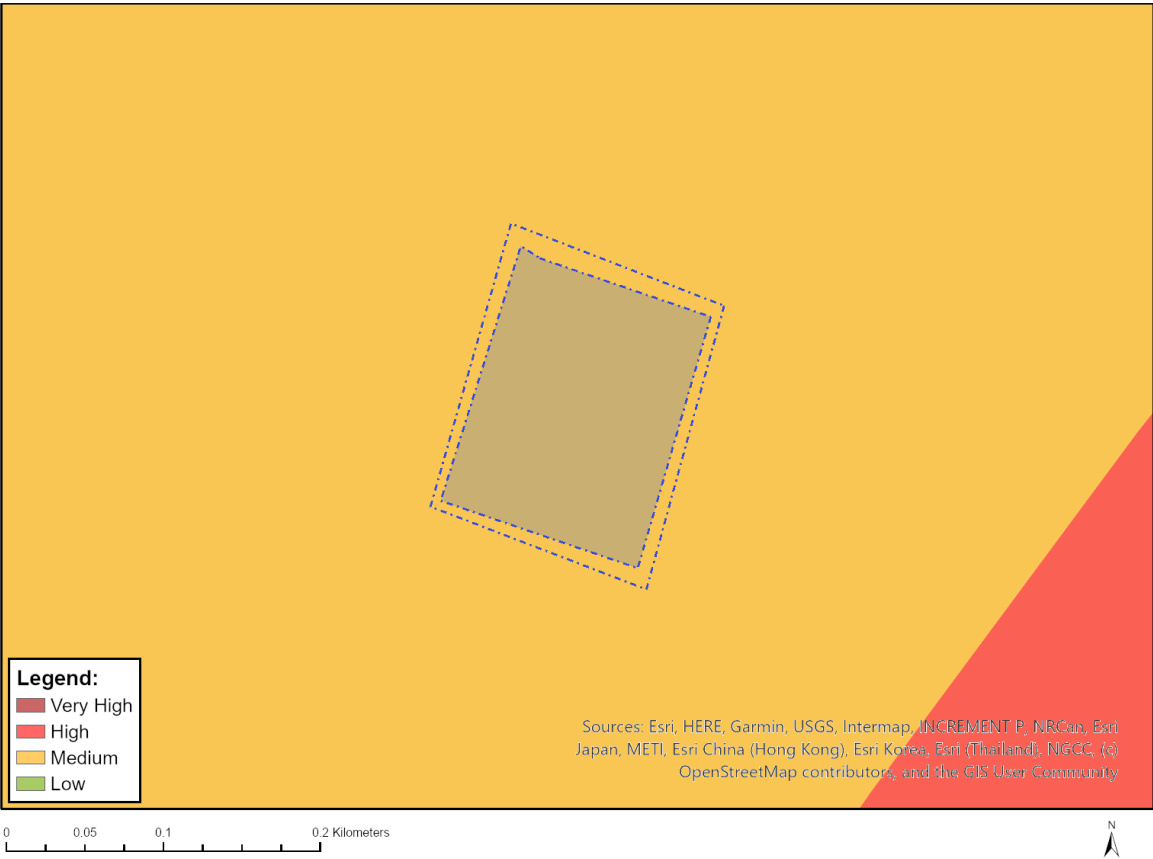


Very High sensitivity	High sensitivity	Medium sensitivity	Low sensitivity
			X

Sensitivity Features:

Sensitivity	Feature(s)
Low	Low Sensitivity

MAP OF RELATIVE CIVIL AVIATION THEME SENSITIVITY

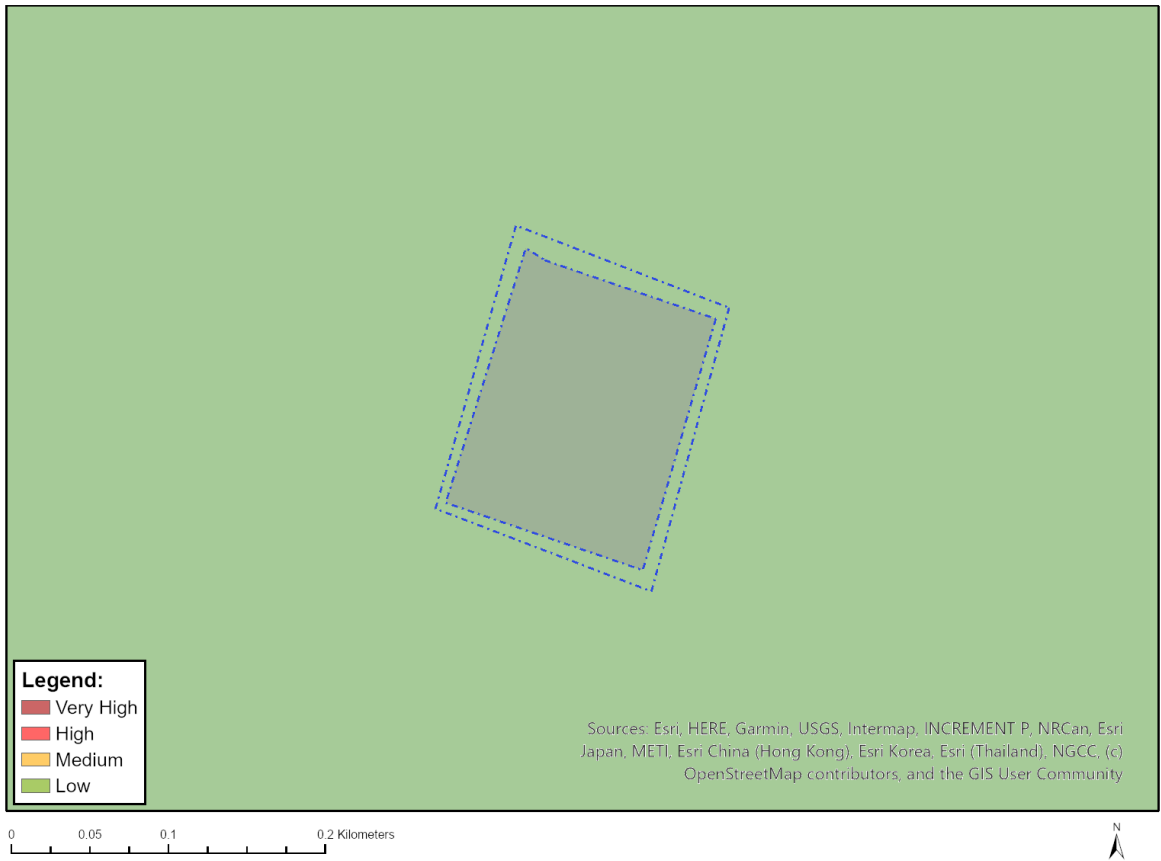


Very High sensitivity	High sensitivity	Medium sensitivity	Low sensitivity
		X	

Sensitivity Features:

Sensitivity	Feature(s)
Medium	Between 8 and 15 km of other civil aviation aerodrome

MAP OF RELATIVE DEFENCE THEME SENSITIVITY

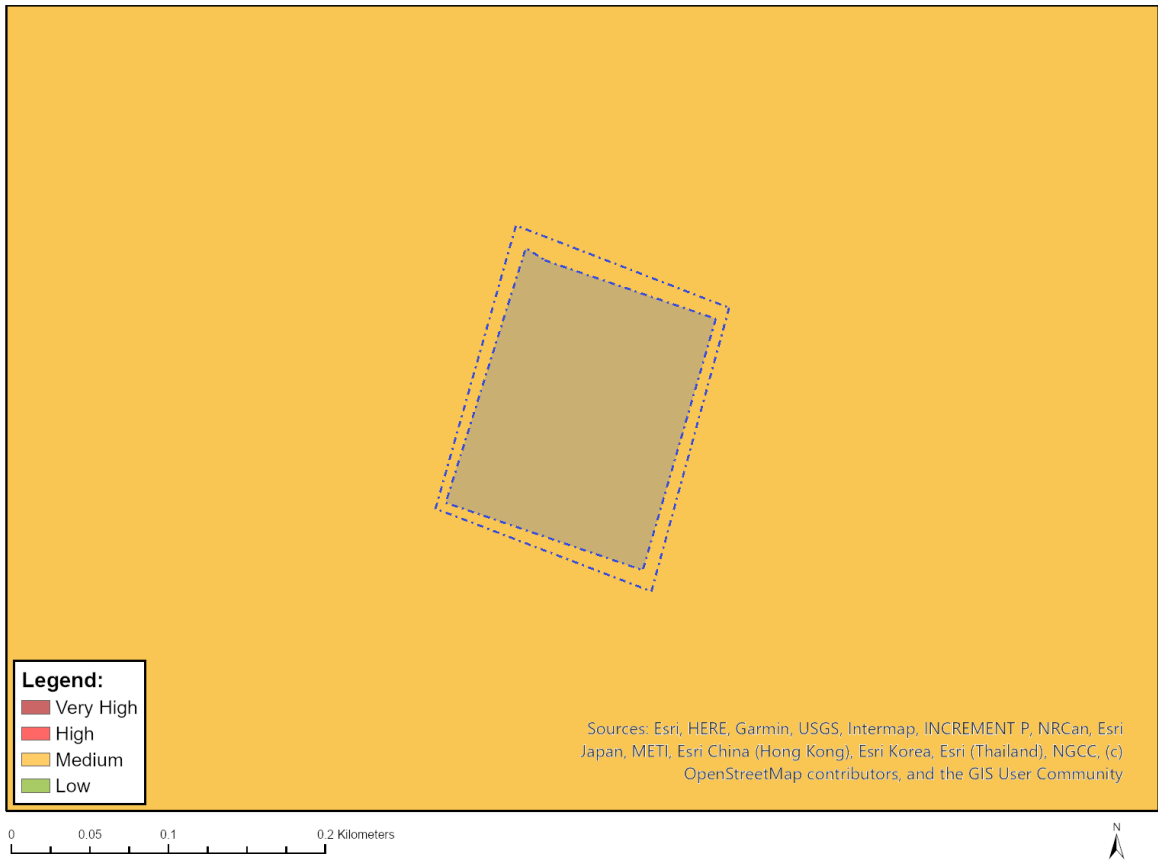


Very High sensitivity	High sensitivity	Medium sensitivity	Low sensitivity
			X

Sensitivity Features:

Sensitivity	Feature(s)
Low	Low Sensitivity

MAP OF RELATIVE PALEONTOLOGY THEME SENSITIVITY



Very High sensitivity	High sensitivity	Medium sensitivity	Low sensitivity
		X	

Sensitivity Features:

Sensitivity	Feature(s)
Medium	Features with a Medium paleontological sensitivity

MAP OF RELATIVE PLANT SPECIES THEME SENSITIVITY



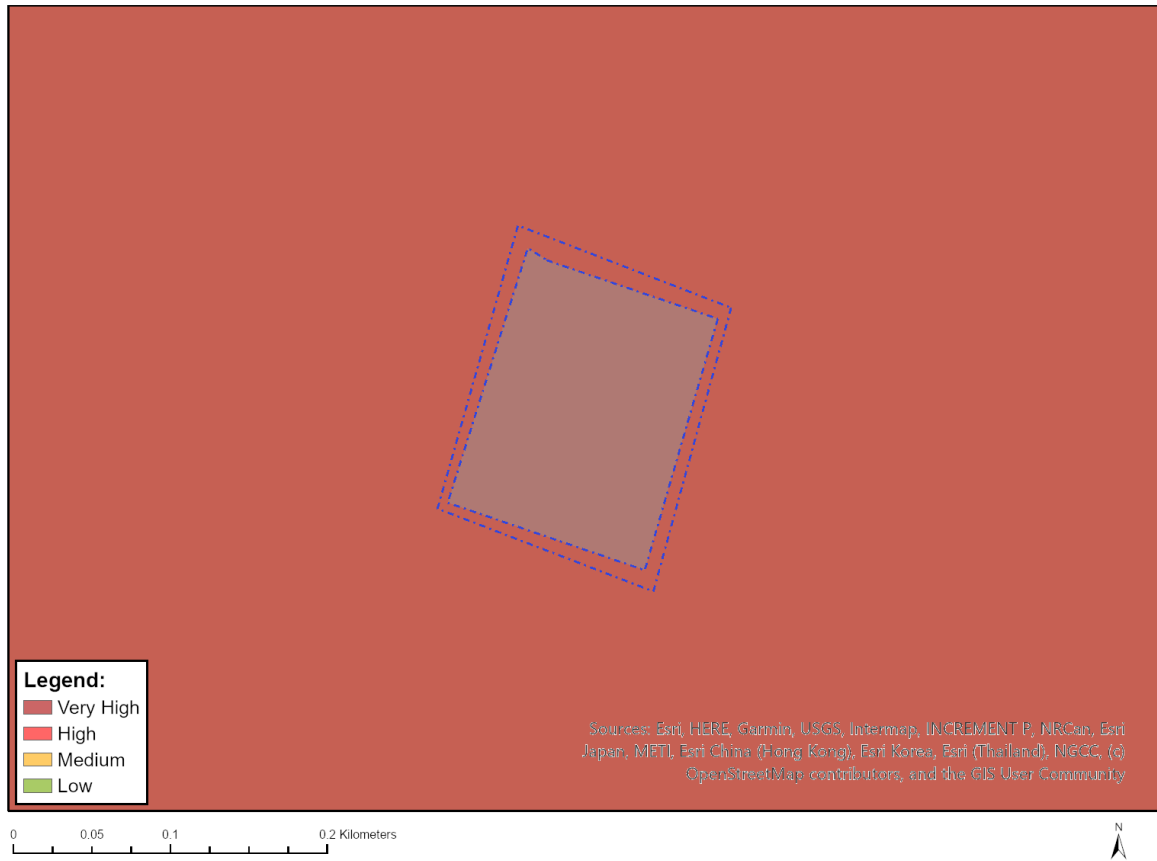
Where only a sensitive plant unique number or sensitive animal unique number is provided in the screening report and an assessment is required, the environmental assessment practitioner (EAP) or specialist is required to email SANBI at eiadatarequests@sanbi.org.za listing all sensitive species with their unique identifiers for which information is required. The name has been withheld as the species may be prone to illegal harvesting and must be protected. SANBI will release the actual species name after the details of the EAP or specialist have been documented.

Very High sensitivity	High sensitivity	Medium sensitivity	Low sensitivity
			X

Sensitivity Features:

Sensitivity	Feature(s)
Low	Low Sensitivity

MAP OF RELATIVE TERRESTRIAL BIODIVERSITY THEME SENSITIVITY



Very High sensitivity	High sensitivity	Medium sensitivity	Low sensitivity
X			

Sensitivity Features:

Sensitivity	Feature(s)
Very High	CBA 1
Very High	EN_Vaal-Vet Sandy Grassland

PREPARED FOR:

PREPARED BY:



Harmony Gold Mining Company



Pre-disturbance Environmental Site Assessment and Site Specific EMP

Site ID:	Harmony Nooitgedacht TSF	Contractor:	EIMS
Location:	Harmony Mines - Welkom	Inspector:	John von Mayer
Client representative:	N/A	Inspection Date:	5 April 2023 and 18 Jun 2025

1. Background

Background of the project: The applicant (Harmony) owns and operates a number of Gold Mines and plants in the Welkom region in the Free State and currently deposits tailings onto the Free State South 2 Tailings Storage Facility (TSF), St. Helena 4 TSF, St. Helena 123 TSF, Dam 23 TSF, Brand D TSF and Target 1&2 TSF. The current planned Life of Mine (LOM) of the Free State operations exceed the available deposition capacity of these TSFs and the applicant is therefore proposing to construct the proposed Nooitgedacht TSF to cater for this additional capacity. The TSF will cover an area of approximately 8.95 km². The proposed TSF will be located on Farm portions Mijannie 66 Ptn 0/RE, Goedgedacht 53 Ptn 0, Nooitgedacht 50 Ptn 0, Jacobsdal 37 Ptn 0 and Rheedersdam 31 Ptn 0.

New pipelines are required to be constructed:

- Two 10km long slurry lines from Harmony One Plant to the St Helena Booster Pump Station;
- One 16k long slurry line from Brand A TSF to the St Helena Booster Pump Station; and
- One 17km slurry line from the St Helena Booster Pump Station to FSN 1 TSF.

The pipelines will be flanged steel pipelines of over 0,36m in diameter and installed above-ground on pre-cast concrete plinths and a 3.5m wide access road, adjacent to the pipelines, will be cleared/graded to provide access for construction, maintenance and inspections.

The proposed pipelines traverse the following farm portions: Vlakplaats 125 Ptn 3, 4 and 5; Mijannie RE/66 Ptn 0; Toronto RE/115 Ptn 7 and 0; Rietpan 17 Ptn 0; Rietkuil 28 Ptn 0; Rheeders Dam 31 Ptn 0; Farm 41 Ptn 20; Ouders Gift 48 Ptn 0; Nooitgedacht 50 Ptn 0; Goedgedacht 53 Ptn 0; Theronia 71 Ptn 1 and 7; Jacobsrust 118 Ptn 0; St Helena 42 Ptn 2 and 3, Farm 80 Ptn 0, Stuirmanship 92 Ptn 1, 7 and 0, Saaiplaas 690 Ptn 1, 11, 15 and 0; Klippan 14 Ptn 1, 2 and 15, Marmageli 20 Ptn 0 and 157 Ptn 0.

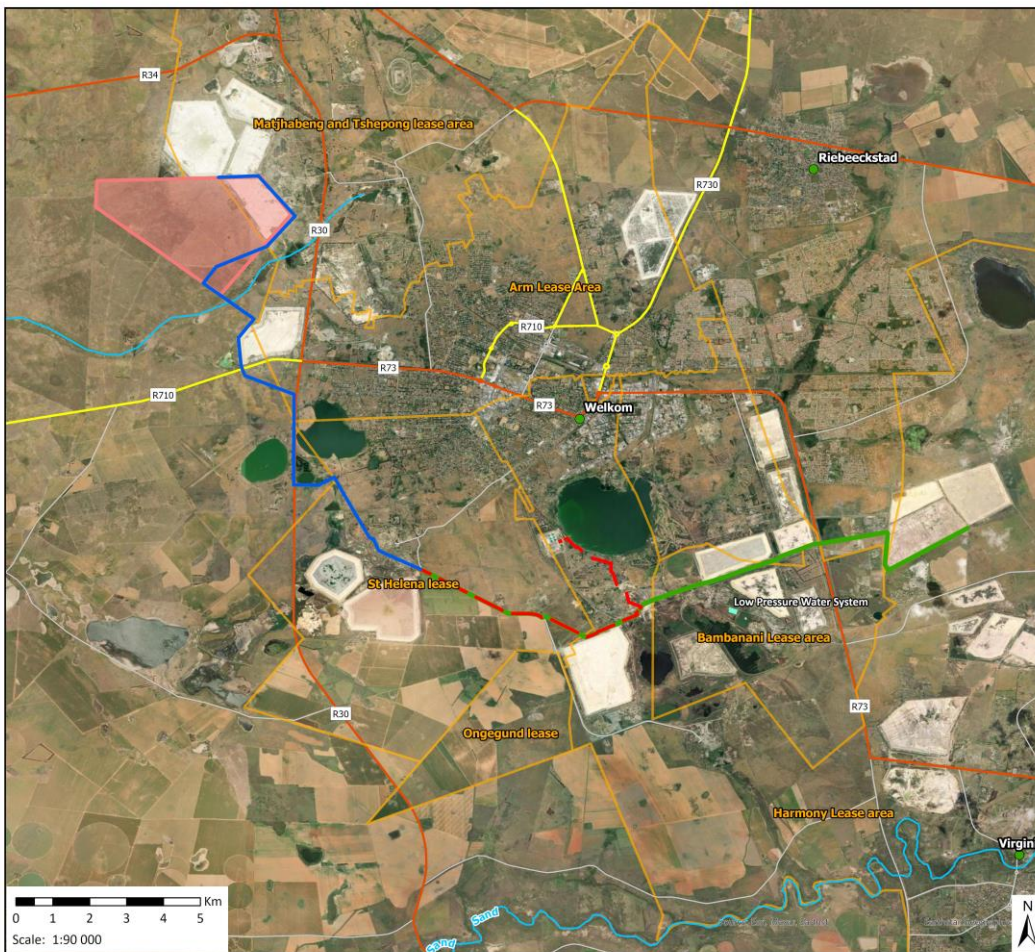
In addition a new low pressure water facility is required to be constructed at farm Klippan 14 ptn 2 which will cover an area of up to 2 ha. Return water will be fed to this facility where the water will then be taken to the plants and the active reclamation sites.

Project Aspects:	Yes	No	Details (provide specifications)	Location (DD MM SS)	
				Latitude	Longitude



❖ TSF	<input checked="" type="checkbox"/>	<input type="checkbox"/>	Tailings Storage Facility	Centre Point 27°56'27.47"S 26°39'55.20"E
				Corner points 27°55'46.82"S 26°38'19.61"E; 27°56'10.31"S 26°38'18.33"E; 27°57'26.84"S 26°40'7.57"E; 27°56'16.58"S 26°41'9.61"E; 27°55'43.59"S 26°40'43.48"E
❖ Pipelines	<input checked="" type="checkbox"/>	<input type="checkbox"/>	Central to St Helena	Start: 28° 0'51.51"S, 26°51'2.16"E Middle: 28° 1'33.64"S, 26°47'32.92"E End: 28° 1'26.99"S, 26°43'0.25"E
			One Plant to St Helena Booster Pump Station	Start: 28° 1'3.66"S, 26°45'2.74"E Middle: 28° 2'26.72"S, 26°45'28.08"E End: 28° 1'25.72"S, 26°42'59.89"E
			St Helena Booster Pump Station to FSN1	Start: 28° 1'27.41"S, 26°43'3.54"E Middle: 28° 0'13.31"S, 26°41'12.30"E End: 27°55'43.84"S, 26°40'6.11"E
❖ Low Pressure Water System	<input checked="" type="checkbox"/>	<input type="checkbox"/>	Low Pressure Water System	Centre point: 28° 2'5.43"S, 26°47'39.11"E

2. Site Layout Plan



Locality Map
1565 Harmony Nootgedacht TSF EIA WUL

Legend

- Harmony Mining Right
- Proposed Tailings Storage Facility
- Low Pressure Water System
- Pipelines from One Plant to St. Helena Booster Pump Station
- Pipeline from Central Plant to St. Helena Booster Pump Station
- Pipeline from St. Helena Booster Pump Station to FSN1
- Rivers
- Places
- Arterial Route
- Main Road
- Secondary Road

Data Sources:
CSG; ESRI; SANBI
Coord System: GCS WGS 1984
Datum: WGS 1984
Units: Degree
Ref: 1565_Locality_3

Date: 2025/04/25
EIMS Ref: 1565
Compiled: JW/QM
Reviewed: JP
Approved: LW



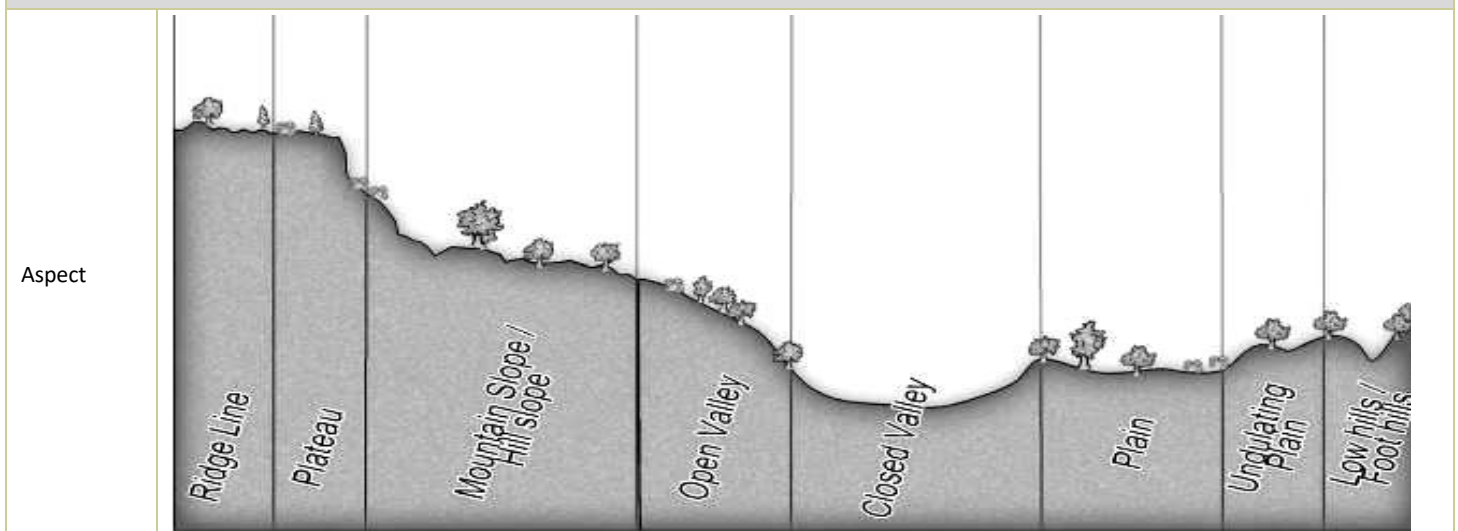
2. DEA Screening Tool Assessment



Aspect	Very High	High	Medium	Low
Agriculture		X		
Animal species		X (TSF and Pipelines)	X (LP Water System)	
Aquatic Biodiversity	X (TSF and Pipelines)			X (LP Water System)
Civil Aviation		X (TSF and Pipelines)	X (LP Water System)	
Defense Theme				X
Archaeological and Cultural Heritage				X
Paleontology	X (Pipelines)	X (TSF)	X (LP Water System)	
Plant Species Theme	X (pipelines)			X (TSF and LP Water System)
Terrestrial Ecology/ Biodiversity	X			

3. Site Assessment

3.1 Gradient (indicate the general gradient characteristics of site)



Aspect	Ridge Line	Plateau	Mountain Slope / Hill slope	Open Valley	Closed Valley	Plain	Undulating Plain	Low hills / Foot hills
TSF site area	<input type="checkbox"/>	<input type="checkbox"/>	<input type="checkbox"/>	<input type="checkbox"/>	<input type="checkbox"/>	<input type="checkbox"/>	<input checked="" type="checkbox"/>	<input type="checkbox"/>

Is the site located on or in the immediate vicinity of any of the following:

	Yes	No	Comment
Erosion Channels or areas of severe erosion/ destabilized soils	<input type="checkbox"/>	<input checked="" type="checkbox"/>	
Wetlands (within 32m)	<input checked="" type="checkbox"/>	<input type="checkbox"/>	There are several wetlands around the site for the TSF and pipelines
Unstable slopes or geological features (rocky outcrops)	<input type="checkbox"/>	<input checked="" type="checkbox"/>	
Bare areas	<input checked="" type="checkbox"/>	<input type="checkbox"/>	Several bare areas around site proposed for TSF and pipelines as well as LP water system
Other Sensitive or risk areas?	<input type="checkbox"/>	<input checked="" type="checkbox"/>	
Are any existing servitudes and structures directly or indirectly affected by the proposed sites and routes (e.g. Eskom, public road servitudes and restrictions- 60m from National Road, farmer's water/irrigation supplies, etc.)?	Yes <input type="checkbox"/>	No <input checked="" type="checkbox"/>	







3.2 Vegetation

Which of the listed descriptions best describes the general groundcover on and around the site?






Natural veld - good condition <input type="checkbox"/>	Natural veld with scattered aliens <input checked="" type="checkbox"/>	Natural veld with heavy alien infestation <input type="checkbox"/>	Veld dominated by alien species <input type="checkbox"/>	Gardens <input type="checkbox"/>
Sport field <input type="checkbox"/>	Cultivated land <input type="checkbox"/>	Paved surface <input type="checkbox"/>	Building structure <input checked="" type="checkbox"/> or other	Bare soil <input checked="" type="checkbox"/>
Comments on vegetation composition:	Site is mostly grassland with scattered areas that are disturbed and degraded due to anthropogenic activities, such as clearing of vegetation, presence of alien and invasive plant species, and fragmentation due to the presence of the mining infrastructure such as existing TSFs and access roads. Existing TSFs located to the north of the site.			
Comments on weed species/type	It appears that a small amount of alien and invasive plant species are present on site. The exact type and species will be confirmed during the EIA specialist study.			
Land cover/ use description: Describe the land uses on the site				
TSF area	Bare soils with scattered vegetation cover with limited alien infestation, adjacent to existing mining infrastructure.			
Pipelines areas	Bare soils with scattered vegetation cover with limited alien infestation, adjacent to existing mining infrastructure.			
LP Water System	Highly disturbed by mining activities			
4. General Comments and Recommendations				
In general the site for the TSF and pipeline areas appear to be of low ecological sensitivity due to their proximity to mining areas and disturbance and degradation to the site areas due to current mining activities. A small number of alien plants were noted in the area as well. Several watercourses or wetlands were noted during the site inspection. No cultivated areas occur in the area proposed for the TSF however there are some adjacent to the TSF and pipeline areas.				

Site Photos

<p>Aspect: General TSF area</p>			
<p>Describe area and adjacent land use:</p>	<p>View north across site towards existing TSF along eastern access road. The only adjacent land use is mining. The vegetation could be described as natural vegetation and grassland with scattered aliens.</p>	<p>View northeast across site from southern access road. The only adjacent land use is mining. The vegetation could be described as natural vegetation and grassland with scattered aliens.</p>	<p>View east from central area of site. The only adjacent land use is mining. The vegetation could be described as natural vegetation and grassland with scattered aliens.</p>
<p>Aspect: General TSF area</p>			
<p>Describe area and adjacent</p>	<p>View south-east from center of site. The only adjacent land use is mining. The vegetation could be described as natural vegetation and grassland with scattered aliens.</p>	<p>View south across site from northern-most access road. The only adjacent land use is mining. The vegetation could be described as natural vegetation and grassland with scattered aliens.</p>	<p>View south-west from north of site. The only adjacent land use is mining. The vegetation could be described as natural vegetation and grassland with scattered aliens.</p>



land use:			
Aspect: General TSF area			
Describe area and adjacent land use:	<p>View west across site from north-eastern access road. The only adjacent land use is mining. The vegetation could be described as natural vegetation with limited alien infestation.</p>	<p>View north-west across site from north-eastern access road. The only adjacent land use is mining. The vegetation could be described as natural vegetation with limited alien infestation.</p>	<p>General view of area proposed for LP water system</p>



7. Verification findings and motivation:

Assessment for specialist studies and motivation:					
Screening Tool Specialist Study Required:	Level of Sensitivity:	Suggested Sensitivity:	Required Assessment	level of	Motivation
Aquatic Biodiversity	Very High	Medium	None.	<input type="checkbox"/>	A full aquatic assessment is being undertaken to confirm the sensitivity.
			Compliance Statement	<input type="checkbox"/>	
			Full Assessment	<input checked="" type="checkbox"/>	
			Other	<input type="checkbox"/>	
Archaeological and Cultural Heritage	Low	High (based on specialist site visit to the area)	None.	<input type="checkbox"/>	A full HIA is being undertaken as part of the EIA.
			Compliance Statement	<input type="checkbox"/>	
			Full Assessment	<input checked="" type="checkbox"/>	
			Other	<input type="checkbox"/>	
Paleontology	Very High - Low	Unknown	None.	<input type="checkbox"/>	A full PIA is being undertaken as part of the EIA.
			Compliance Statement	<input type="checkbox"/>	
			Full Assessment	<input checked="" type="checkbox"/>	
			Other	<input type="checkbox"/>	
Terrestrial Biodiversity	Very High	Very High	None.	<input type="checkbox"/>	Full assessment will be undertaken as part of the EIA.
			Compliance Statement	<input type="checkbox"/>	
			Full Assessment	<input checked="" type="checkbox"/>	
			Other	<input type="checkbox"/>	
Agriculture Theme	High	Moderate	None.	<input type="checkbox"/>	A soils assessment is being undertaken as part of the EA.
			Compliance Statement	<input type="checkbox"/>	
			Full Assessment	<input checked="" type="checkbox"/>	
			Other	<input type="checkbox"/>	
Plant Species	Very High - Low	Moderate	None.	<input type="checkbox"/>	A terrestrial ecology study is being



					undertaken as part of the EA.
			Compliance Statement	<input type="checkbox"/>	
			Full Assessment	<input checked="" type="checkbox"/>	
			Other		
Animal Species	High	Very High (based on specialist site visit to the area)	None.	<input checked="" type="checkbox"/>	This will be covered as part of terrestrial ecology as part of the EIA.
			Compliance Statement	<input type="checkbox"/>	
			Full Assessment	<input checked="" type="checkbox"/>	
			Other		

Guidance notes:

- An applicant intending to undertake an activity identified in the scope of this protocol, on a site identified by the screening tool as being of “very high” or “high” sensitivity for terrestrial animal species must submit a Terrestrial Animal Species Specialist Assessment Report.
- An applicant intending to undertake an activity identified in the scope of this protocol on a site identified by the screening tool as being of “medium sensitivity” for terrestrial animal species must submit either a Terrestrial Animal Species Specialist Assessment Report or a Terrestrial Animal Species Compliance Statement, depending on the outcome of a site inspection undertaken in accordance with paragraph 4.
- An applicant intending to undertake an activity identified in the scope of this protocol on a site identified by the screening tool as being of “low” sensitivity for terrestrial animal species must submit a Terrestrial Animal Species Compliance Statement.
- Where the information gathered from the site sensitivity verification differs from the screening tool designation of “very high” or “high”, for terrestrial animal species sensitivity and it is found to be of a “low” sensitivity, then a Terrestrial Animal Species Compliance Statement must be submitted.
- Where the information gathered from the site sensitivity verification differs from the screening tool designation of “low” terrestrial animal species sensitivity and it is found to be of a “very high” or “high” terrestrial animal species sensitivity, a Terrestrial Animal Species Specialist Assessment must be conducted.
- If any part of the development falls within an area of confirmed “very high” or “high” sensitivity, the assessment and reporting requirements prescribed for the “very high” or “high” sensitivity, apply to the entire development footprint. Development footprint in the context of this protocol means, the area on which the proposed development will take place and includes the area that will be disturbed or impacted.