

**SCREENING REPORT FOR AN ENVIRONMENTAL AUTHORIZATION AS
REQUIRED BY THE 2014 EIA REGULATIONS – PROPOSED SITE
ENVIRONMENTAL SENSITIVITY**

EIA Reference number:

Project name: Motuoane Production Right EIA

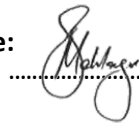
Project title: Motuoane Production Right EIA

Date screening report generated: 10/07/2025 12:39:23

Applicant: Motuoane Energy Pty Ltd

Compiler: Sikhumbuzo Mahlangu

Compiler signature:



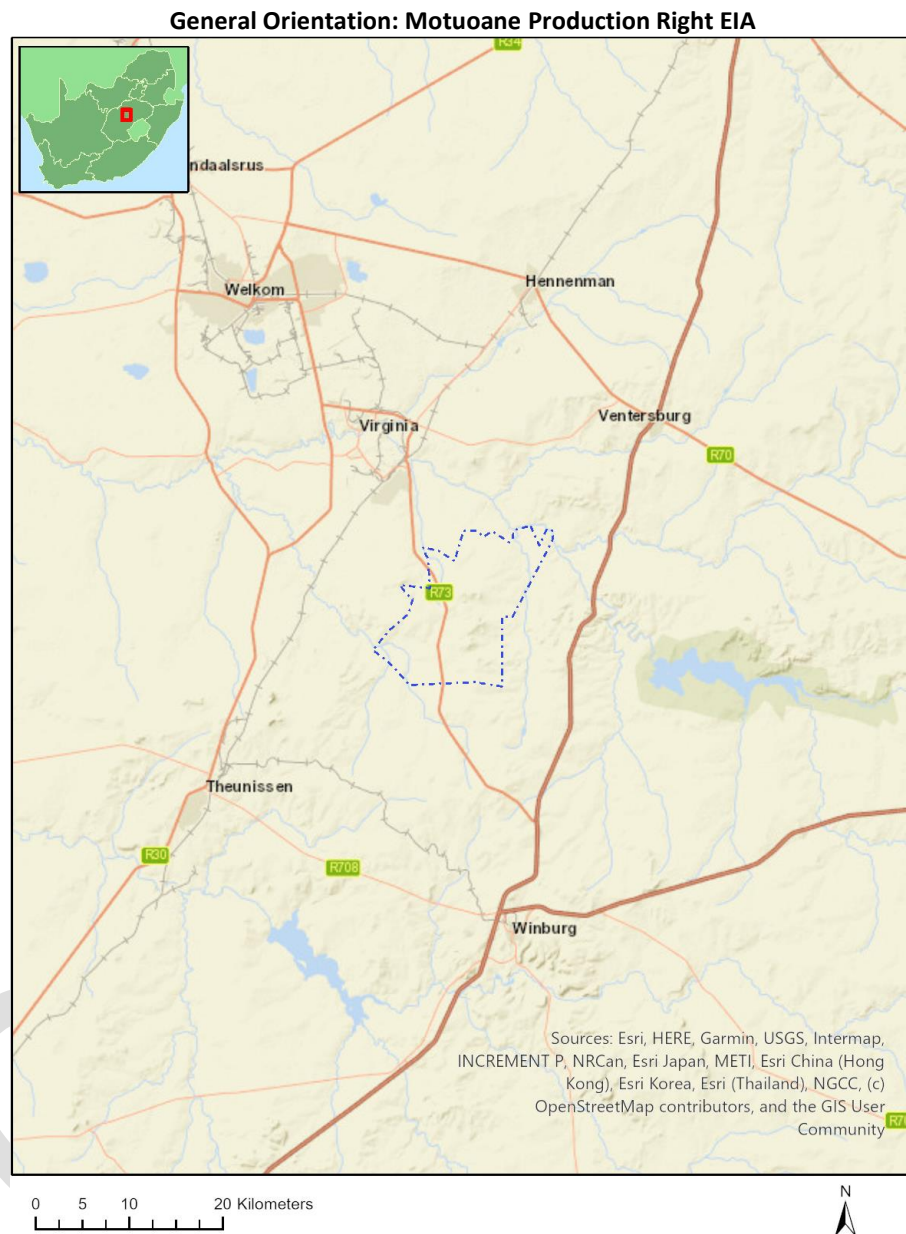
Application Category: Mining|Production Right|Gas or Oil Terrestrial

Table of Contents

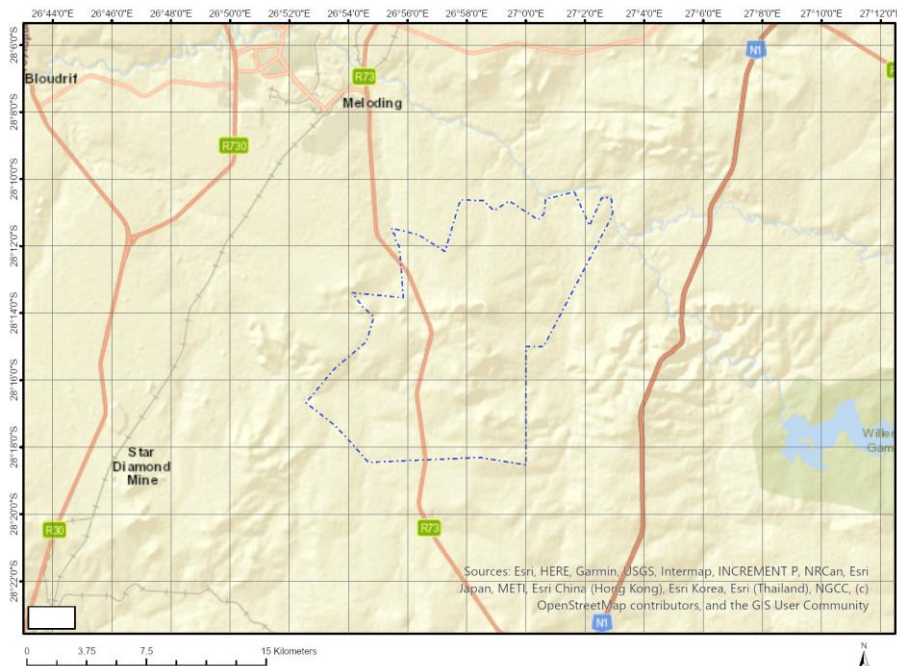
Proposed Project Location	3
Orientation map 1: General location	3
Map of proposed site and relevant area(s)	4
Cadastral details of the proposed site	4
Wind and Solar developments with an approved Environmental Authorisation or applications under consideration within 30 km of the proposed area	6
Environmental Management Frameworks relevant to the application	7
Environmental screening results and assessment outcomes	7
Relevant development incentives, restrictions, exclusions or prohibitions	7
Proposed Development Area Environmental Sensitivity	7
Specialist assessments identified	7
Results of the environmental sensitivity of the proposed area	9
MAP OF RELATIVE AGRICULTURE THEME SENSITIVITY	9
MAP OF RELATIVE ANIMAL SPECIES THEME SENSITIVITY	10
MAP OF RELATIVE AQUATIC BIODIVERSITY THEME SENSITIVITY	11
MAP OF RELATIVE ARCHAEOLOGICAL AND CULTURAL HERITAGE THEME SENSITIVITY	12
MAP OF RELATIVE CIVIL AVIATION THEME SENSITIVITY	13
MAP OF RELATIVE DEFENCE THEME SENSITIVITY	14
MAP OF RELATIVE PALEONTOLOGY THEME SENSITIVITY	15
MAP OF RELATIVE PLANT SPECIES THEME SENSITIVITY	16
MAP OF RELATIVE TERRESTRIAL BIODIVERSITY THEME SENSITIVITY	17

Proposed Project Location

Orientation map 1: General location



Map of proposed site and relevant area(s)



Cadastral details of the proposed site

Property details:

No	Farm Name	Farm/ Erf No	Portion	Latitude	Longitude	Property Type
1	ROOIHEUVEL	57	0	28°11'7.12S	27°2'38.19E	Farm
2	ZANDDRAAI	58	0	28°10'41.46S	27°2'1.53E	Farm
3	KRIEGERS KRAAL	708	0	28°12'39.87S	26°54'21.14E	Farm
4	JUNCTIONDRIFT	217	0	28°11'16S	27°0'48.72E	Farm
5	QUAGGAFONTEIN	3	0	28°15'13.67S	27°0'29.02E	Farm
6	LE ROUX	717	0	28°11'40.11S	26°58'7.15E	Farm
7	HAZOR	381	0	28°16'21.28S	26°53'33.76E	Farm
8	LE ROUX	766	0	28°11'24.76S	26°56'14.1E	Farm
9	LEEUEWKUIL	428	0	28°10'42.95S	27°0'9.76E	Farm
10	DETENTE	744	0	28°12'48.14S	26°56'44.1E	Farm
11	DELAPORTE	887	0	28°15'50.97S	26°59'22.77E	Farm
12	AZEKA	1019	0	28°17'6.96S	26°54'42.65E	Farm
13	DUIKERBOS	246	0	28°10'6.98S	26°59'10.11E	Farm
14	DOORNNEK	905	0	28°17'0.84S	26°59'7.94E	Farm
15	BEGINSEL	75	0	28°10'20.34S	26°59'31.56E	Farm
16	VRUCHTENFONTEIN	942	0	28°17'54.02S	26°55'13.22E	Farm
17	ZOUTFONTEIN	841	0	28°17'15.2S	26°56'45.36E	Farm
18	GOOI DIE HOED	5	0	28°20'17.18S	26°54'38.39E	Farm
19	MAZELSPRUIT	1	0	28°18'10.08S	26°59'46.46E	Farm
20	PAARDEKUIL	228	0	28°15'59.16S	26°54'35.18E	Farm
21	BLOMSKRAAL	216	0	28°13'14.9S	27°0'36.19E	Farm
22	SIBERIASFONTEIN	605	0	28°16'18.13S	26°56'25.68E	Farm
23	VENTERS PAALMYN	298	0	28°9'25.85S	27°2'55.59E	Farm
24	SCHOEMANSKOP	654	0	28°17'45.17S	26°52'27.38E	Farm
25	BOSRAND	228	0	28°15'18.83S	26°53'4.76E	Farm
26	PALMIET FONTEIN	229	0	28°14'40.73S	26°56'43.96E	Farm
27	EUREKA	2101	0	28°15'11.8S	26°55'31.87E	Farm

28	PIETER'S GIFT	1890	0	28°17'48.84S	26°57'27.91E	Farm
29	AZEKA	1019	1	28°17'25.83S	26°54'5.24E	Farm Portion
30	AZEKA	1019	0	28°16'54.31S	26°55'8.05E	Farm Portion
31	VRUCHTENFONTEIN	942	0	28°17'55.18S	26°55'12.08E	Farm Portion
32	DOORNNEK	905	0	28°16'50.53S	26°58'22.43E	Farm Portion
33	DOORNNEK	905	3	28°17'33.54S	26°58'10.23E	Farm Portion
34	DOORNNEK	905	2	28°17'29.52S	26°59'24.07E	Farm Portion
35	DOORNNEK	905	1	28°16'43.57S	26°59'35E	Farm Portion
36	DELAPORTE	887	0	28°15'50.97S	26°59'22.77E	Farm Portion
37	LE ROUX	766	1	28°11'19.45S	26°56'47.7E	Farm Portion
38	LE ROUX	766	0	28°11'8.67S	26°55'44.27E	Farm Portion
39	LE ROUX	717	1	28°11'40.91S	26°58'10.93E	Farm Portion
40	KRIEGERS KRAAL	708	1	28°12'58S	26°54'0.91E	Farm Portion
41	KRIEGERS KRAAL	708	0	28°12'21.87S	26°54'41.44E	Farm Portion
42	SCHOEMANSKOP	654	0	28°17'43.61S	26°52'32.81E	Farm Portion
43	SIBERIASFONTEIN	605	1	28°16'24.29S	26°55'57.15E	Farm Portion
44	SIBERIASFONTEIN	605	0	28°16'13.13S	26°56'48.78E	Farm Portion
45	LEEUWKUIL	428	0	28°10'44.49S	27°0'9.74E	Farm Portion
46	HAZOR	381	1	28°15'49.8S	26°53'46.2E	Farm Portion
47	HAZOR	381	0	28°16'46.33S	26°53'23.85E	Farm Portion
48	VENTERS PAALMYN	298	0	28°9'25.85S	27°2'55.59E	Farm Portion
49	PALMIET FONTEIN	229	6	28°14'34.17S	26°56'47.46E	Farm Portion
50	PALMIET FONTEIN	229	7	28°14'32.44S	26°57'0.81E	Farm Portion
51	PALMIET FONTEIN	229	8	28°14'36.87S	26°57'1.58E	Farm Portion
52	PALMIET FONTEIN	229	9	28°14'39.19S	26°56'47.81E	Farm Portion
53	PALMIET FONTEIN	229	4	28°14'37.64S	26°56'53.3E	Farm Portion
54	PALMIET FONTEIN	229	0	28°14'59.9S	26°56'29.43E	Farm Portion
55	PALMIET FONTEIN	229	0	28°15'4.69S	26°57'46.63E	Farm Portion
56	PALMIET FONTEIN	229	3	28°13'48.28S	26°56'40.21E	Farm Portion
57	PALMIET FONTEIN	229	5	28°13'50.5S	26°56'56.16E	Farm Portion
58	PALMIET FONTEIN	229	3	28°13'53.4S	26°57'8.17E	Farm Portion
59	PALMIET FONTEIN	229	2	28°13'41.15S	26°56'16.94E	Farm Portion
60	PALMIET FONTEIN	229	1	28°13'48.12S	26°55'3.98E	Farm Portion
61	PAARDEKUIL	228	0	28°15'59.16S	26°54'35.18E	Farm Portion
62	BOSRAND	228	0	28°15'18.83S	26°53'4.76E	Farm Portion
63	JUNCTIONDRIFT	217	0	28°10'56.78S	27°1'9.86E	Farm Portion
64	JUNCTIONDRIFT	217	1	28°11'22.99S	26°59'45.3E	Farm Portion
65	JUNCTIONDRIFT	217	3	28°11'34.09S	27°1'53.19E	Farm Portion
66	JUNCTIONDRIFT	217	2	28°11'15.99S	27°1'49.96E	Farm Portion
67	BLOMSKRAAL	216	0	28°13'16.39S	27°0'35.41E	Farm Portion
68	BEGINSEL	75	0	28°10'20.34S	26°59'31.56E	Farm Portion
69	GOOI DIE HOED	5	1	28°18'51.85S	26°54'46.51E	Farm Portion
70	QUAGGAFONTEIN	3	0	28°15'13.67S	27°0'29.02E	Farm Portion
71	MAZELSPRUIT	1	1	28°18'1.09S	26°58'40.82E	Farm Portion
72	MAZELSPRUIT	1	4	28°18'6.12S	26°58'22.43E	Farm Portion
73	MAZELSPRUIT	1	2	28°18'6.75S	26°59'26.82E	Farm Portion
74	MAZELSPRUIT	1	0	28°18'8.82S	27°0'21.44E	Farm Portion
75	EUREKA	2101	0	28°15'11.8S	26°55'31.87E	Farm Portion
76	PIETER'S GIFT	1890	0	28°17'53.34S	26°57'46.63E	Farm Portion
77	PIETER'S GIFT	1890	2	28°17'23.42S	26°58'3.22E	Farm Portion
78	PIETER'S GIFT	1890	3	28°17'5.81S	26°57'58.81E	Farm Portion
79	PIETER'S GIFT	1890	1	28°17'49.12S	26°57'0.42E	Farm Portion
80	ZOUTFONTEIN	841	0	28°17'18.26S	26°56'21.6E	Farm Portion
81	ZOUTFONTEIN	841	1	28°16'47.03S	26°57'47.88E	Farm Portion
82	ZOUTFONTEIN	841	2	28°16'46.24S	26°57'50.7E	Farm Portion
83	DETENTE	744	2	28°13'12.42S	26°56'42.8E	Farm Portion
84	DETENTE	744	3	28°12'49.72S	26°57'2.56E	Farm Portion
85	DETENTE	744	2	28°12'56.54S	26°57'26.06E	Farm Portion
86	DETENTE	744	0	28°13'12.04S	26°57'55.36E	Farm Portion
87	DETENTE	744	1	28°12'27.36S	26°56'13.09E	Farm Portion

88	DUIKERBOS	246	0	28°10'6.98S	26°59'10.11E	Farm Portion
89	ZANDDRAAI	58	1	28°10'24.84S	27°1'42.34E	Farm Portion
90	ZANDDRAAI	58	0	28°10'41.48S	27°2'8.62E	Farm Portion
91	ROOIHEUVEL	57	0	28°11'7.12S	27°2'38.19E	Farm Portion

Development footprint¹ vertices:

No development footprint(s) specified.

Wind and Solar developments with an approved Environmental Authorisation or applications under consideration within 30 km of the proposed area

No	EIA Reference No	Classification	Status of application	Distance from proposed area (km)
1	12/12/20/2669	Solar PV	Approved	12
2	14/12/16/3/3/2/2099	Solar PV	Approved	0
3	14/12/16/3/3/1/2399	Solar PV	Approved	8.7
4	14/12/16/3/3/2/2422	Solar PV	Approved	28.9
5	14/12/16/3/3/2/2299	Solar PV	Approved	0
6	14/12/16/3/3/2/526	Solar PV	Approved	15
7	14/12/16/3/3/2/2087	Solar PV	Approved	9
8	14/12/16/3/3/1/2772	Solar PV	Approved	9
9	14/12/16/3/3/2/2233	Solar PV	Approved	23.9
10	14/12/16/3/3/2/580	Solar PV	Approved	13.3
11	14/12/16/3/3/2/2421	Solar PV	Approved	21
12	12/12/20/2669/A	Solar PV	Approved	12
13	12/12/20/2668	Solar PV	Approved	8.7
14	14/12/16/3/3/2/512	Solar PV	Approved	22.2
15	14/12/16/3/3/2/2414	Solar PV	Approved	24.6
16	14/12/16/3/3/2/2423	Solar PV	Approved	28.9
17	14/12/16/3/3/2/2100	Solar PV	Approved	0
18	12/12/20/2666/A	Solar PV	Approved	15.9
19	14/12/16/3/3/2/2230	Solar PV	Approved	10.8
20	12/12/20/2667	Solar PV	Approved	8.7
21	12/12/20/2666	Solar PV	Approved	15.9
22	14/12/16/3/3/2/2215	Solar PV	Approved	13
23	14/12/16/3/3/2/2283	Solar PV	Approved	0
24	14/12/16/3/3/2/672/AM4	Solar PV	Approved	28
25	14/12/16/3/3/2/581	Solar PV	Approved	28.4
26	14/12/16/3/3/2/2429	Solar PV	Approved	19.2
27	14/12/16/3/3/2/2217	Solar PV	Approved	13
28	14/12/16/3/3/2/2163	Solar PV	Approved	15
29	14/12/16/3/3/2/2214	Solar PV	Approved	11
30	14/12/16/3/3/2/2297	Solar PV	Approved	0
31	14/12/16/3/3/2/2322	Solar PV	Approved	0
32	14/12/16/3/3/2/2415	Solar PV	Approved	15.4
33	14/12/16/3/3/1/1322	Solar PV	Approved	17.3
34	14/12/16/3/3/2/2101	Solar PV	Approved	0
35	14/12/16/3/3/2/672	Solar PV	Approved	28
36	14/12/16/3/3/2/672/AM3	Solar PV	Approved	28

¹ “development footprint”, means the area within the site on which the development will take place and includes all ancillary developments for example roads, power lines, boundary walls, paving etc. which require vegetation clearance or which will be disturbed and for which the application has been submitted.

Environmental Management Frameworks relevant to the application

No intersections with EMF areas found.

Environmental screening results and assessment outcomes

The following sections contain a summary of any development incentives, restrictions, exclusions or prohibitions that apply to the proposed development site as well as the most environmental sensitive features on the site based on the site sensitivity screening results for the application classification that was selected. The application classification selected for this report is:

Mining | Production Right | Gas or Oil Terrestrial.

Relevant development incentives, restrictions, exclusions or prohibitions

The following development incentives, restrictions, exclusions or prohibitions and their implications that apply to this site are indicated below.

No intersection with any development zones found.

Proposed Development Area Environmental Sensitivity

The following summary of the development site environmental sensitivities is identified. Only the highest environmental sensitivity is indicated. The footprint environmental sensitivities for the proposed development footprint as identified, are indicative only and must be verified on site by a suitably qualified person before the specialist assessments identified below can be confirmed.

Theme	Very High sensitivity	High sensitivity	Medium sensitivity	Low sensitivity
Agriculture Theme	X			
Animal Species Theme			X	
Aquatic Biodiversity Theme	X			
Archaeological and Cultural Heritage Theme				X
Civil Aviation Theme		X		
Defence Theme				X
Paleontology Theme	X			
Plant Species Theme				X
Terrestrial Biodiversity Theme	X			

Specialist assessments identified

Based on the selected classification, and the known impacts associated with the proposed development, the following list of specialist assessments have been identified for inclusion in the assessment report. It is the responsibility of the EAP to confirm this list and to motivate in the assessment report, the reason for not including any of the identified specialist study including the provision of photographic evidence of the site situation.

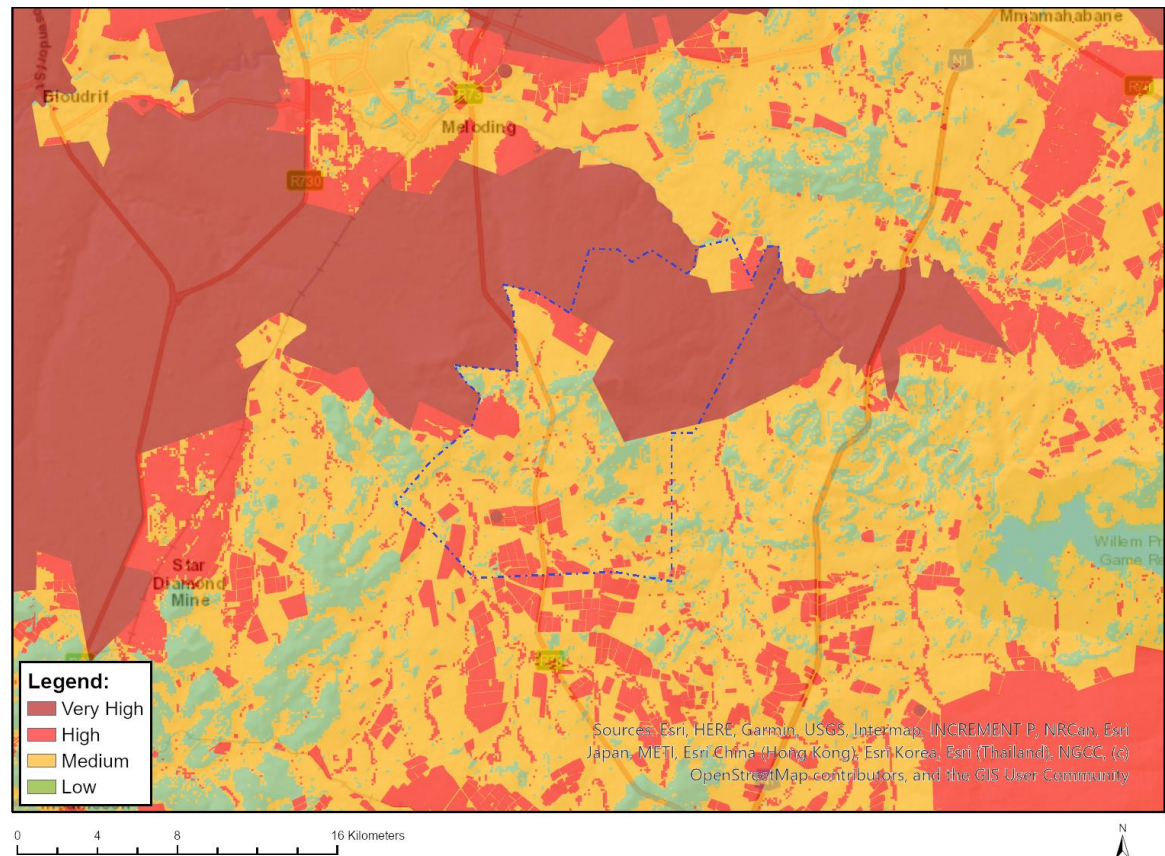
No	Specialist	Assessment Protocol
----	------------	---------------------

	assessment	
1	Agricultural Impact Assessment	https://screening.environment.gov.za/ScreeningDownloads/AssessmentProtocols/Gazetted_General_Agriculture_Assessment_Protocols.pdf
2	Landscape/Visual Impact Assessment	https://screening.environment.gov.za/ScreeningDownloads/AssessmentProtocols/Gazetted_General_Requirement_Assessment_Protocols.pdf
3	Archaeological and Cultural Heritage Impact Assessment	https://screening.environment.gov.za/ScreeningDownloads/AssessmentProtocols/GuidanceforHIA.pdf
4	Palaeontology Impact Assessment	https://screening.environment.gov.za/ScreeningDownloads/AssessmentProtocols/GuidanceforPIA.pdf
5	Terrestrial Biodiversity Impact Assessment	https://screening.environment.gov.za/ScreeningDownloads/AssessmentProtocols/Gazetted_Terrestrial_Biodiversity_Assessment_Protocols.pdf
6	Aquatic Biodiversity Impact Assessment	https://screening.environment.gov.za/ScreeningDownloads/AssessmentProtocols/Gazetted_Aquatic_Biodiversity_Assessment_Protocols.pdf
7	Hydrology Assessment	https://screening.environment.gov.za/ScreeningDownloads/AssessmentProtocols/Gazetted_General_Requirement_Assessment_Protocols.pdf
8	RFI Assessment	https://screening.environment.gov.za/ScreeningDownloads/AssessmentProtocols/Gazetted_General_Requirement_Assessment_Protocols.pdf
9	Noise Impact Assessment	https://screening.environment.gov.za/ScreeningDownloads/AssessmentProtocols/Gazetted_Noise_Impacts_Assessment_Protocol.pdf
10	Geotechnical Assessment	https://screening.environment.gov.za/ScreeningDownloads/AssessmentProtocols/Gazetted_General_Requirement_Assessment_Protocols.pdf
11	Health Impact Assessment	https://screening.environment.gov.za/ScreeningDownloads/AssessmentProtocols/Gazetted_General_Requirement_Assessment_Protocols.pdf
12	Ambient Air Quality Impact Assessment	https://screening.environment.gov.za/ScreeningDownloads/AssessmentProtocols/Gazetted_General_Requirement_Assessment_Protocols.pdf
13	Plant Species Assessment	https://screening.environment.gov.za/ScreeningDownloads/AssessmentProtocols/Gazetted_Plant_Species_Assessment_Protocols.pdf
14	Animal Species Assessment	https://screening.environment.gov.za/ScreeningDownloads/AssessmentProtocols/Gazetted_Animal_Species_Assessment_Protocols.pdf

Results of the environmental sensitivity of the proposed area.

The following section represents the results of the screening for environmental sensitivity of the proposed site for relevant environmental themes associated with the project classification. It is the duty of the EAP to ensure that the environmental themes provided by the screening tool are comprehensive and complete for the project. Refer to the disclaimer.

MAP OF RELATIVE AGRICULTURE THEME SENSITIVITY



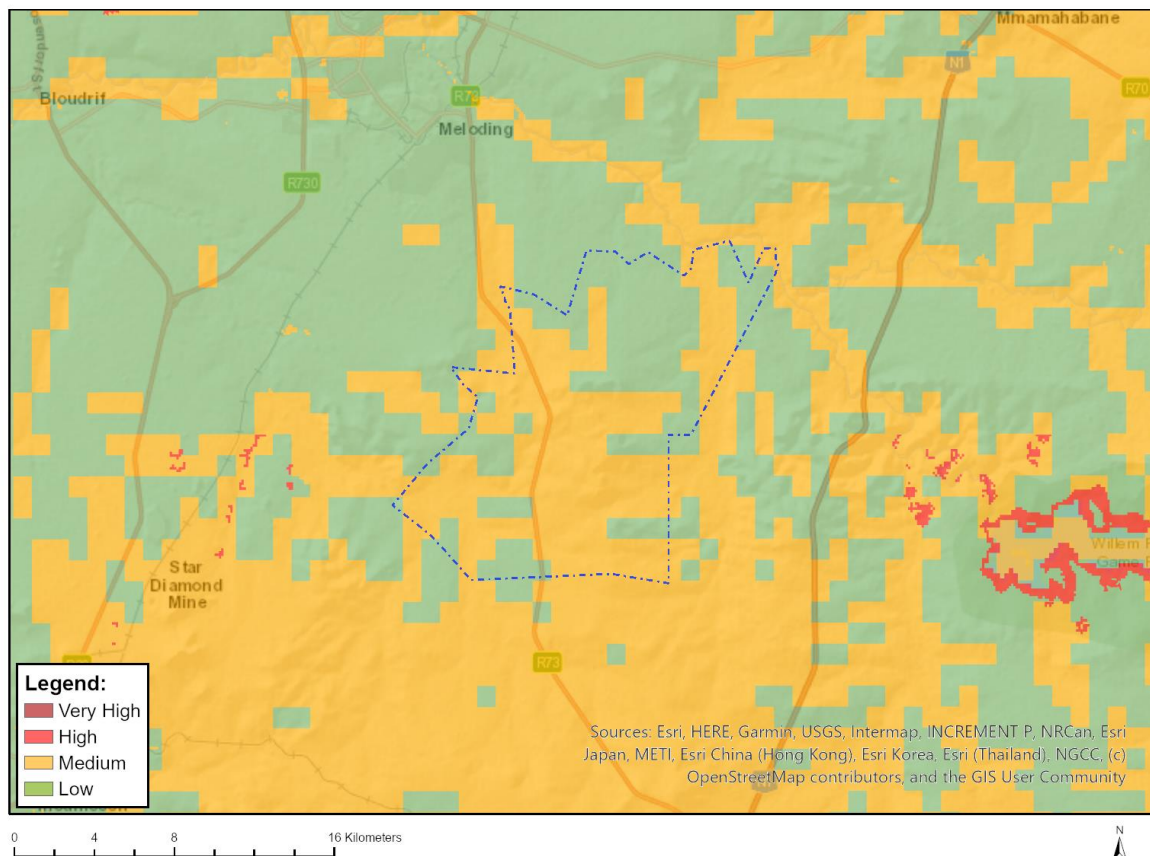
Very High sensitivity	High sensitivity	Medium sensitivity	Low sensitivity
X			

Sensitivity Features:

Sensitivity	Feature(s)
High	Old_Fields
High	Rainfed Annual Crop Cultivation / Planted Pastures
High	08. Moderate
High	09. Moderate-High
Low	03. Low-Very low
Low	04. Low-Very low
Low	05. Low
Medium	06. Low-Moderate
Medium	07. Low-Moderate
Very High	Horticulture

Very High	Non-pivot Irrigated Annual Crop Cultivation / Planted Pastures
Very High	Pivot_Irrigation
Very High	Virginia PAA

MAP OF RELATIVE ANIMAL SPECIES THEME SENSITIVITY



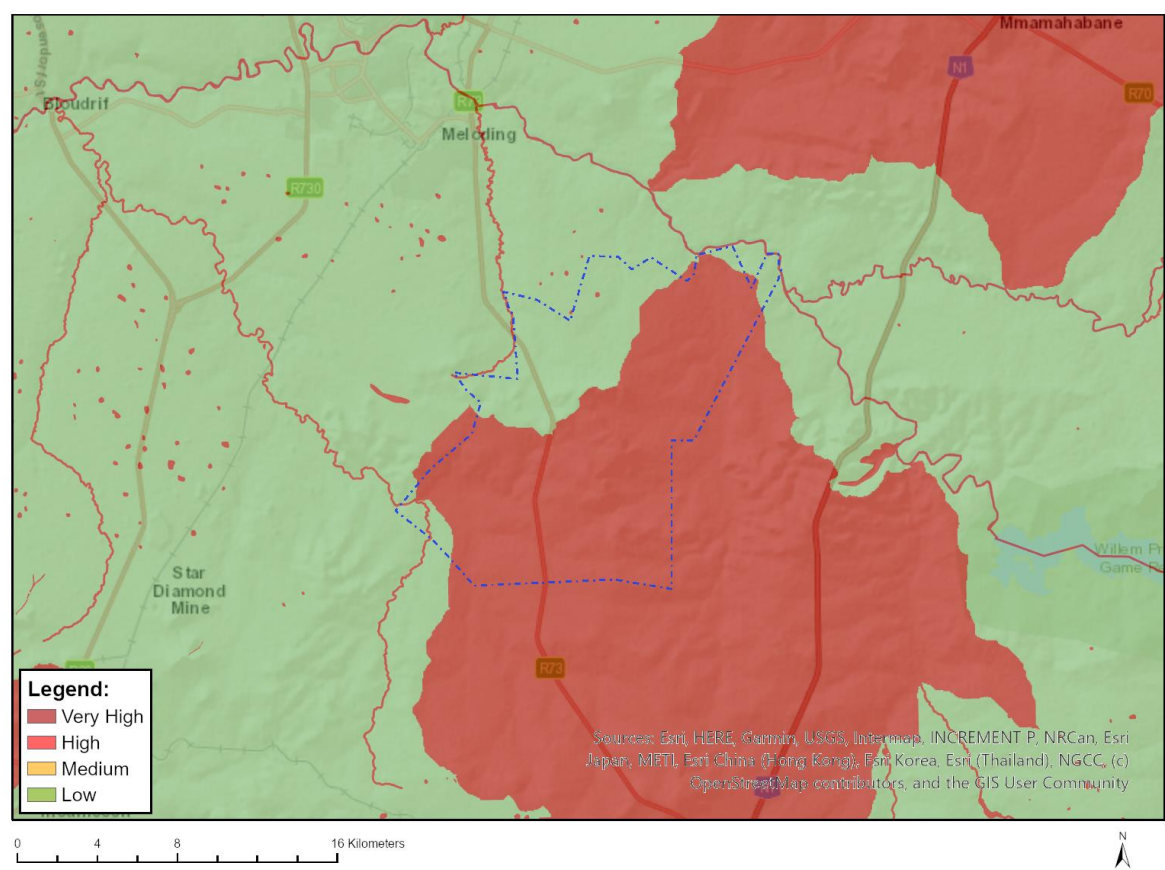
Where only a sensitive plant unique number or sensitive animal unique number is provided in the screening report and an assessment is required, the environmental assessment practitioner (EAP) or specialist is required to email SANBI at eiadatarequests@sanbi.org.za listing all sensitive species with their unique identifiers for which information is required. The name has been withheld as the species may be prone to illegal harvesting and must be protected. SANBI will release the actual species name after the details of the EAP or specialist have been documented.

Very High sensitivity	High sensitivity	Medium sensitivity	Low sensitivity
		X	

Sensitivity Features:

Sensitivity	Feature(s)
Low	Subject to confirmation
Medium	Aves-Hydroprogne caspia
Medium	Mammalia-Hydricitis maculicollis

MAP OF RELATIVE AQUATIC BIODIVERSITY THEME SENSITIVITY

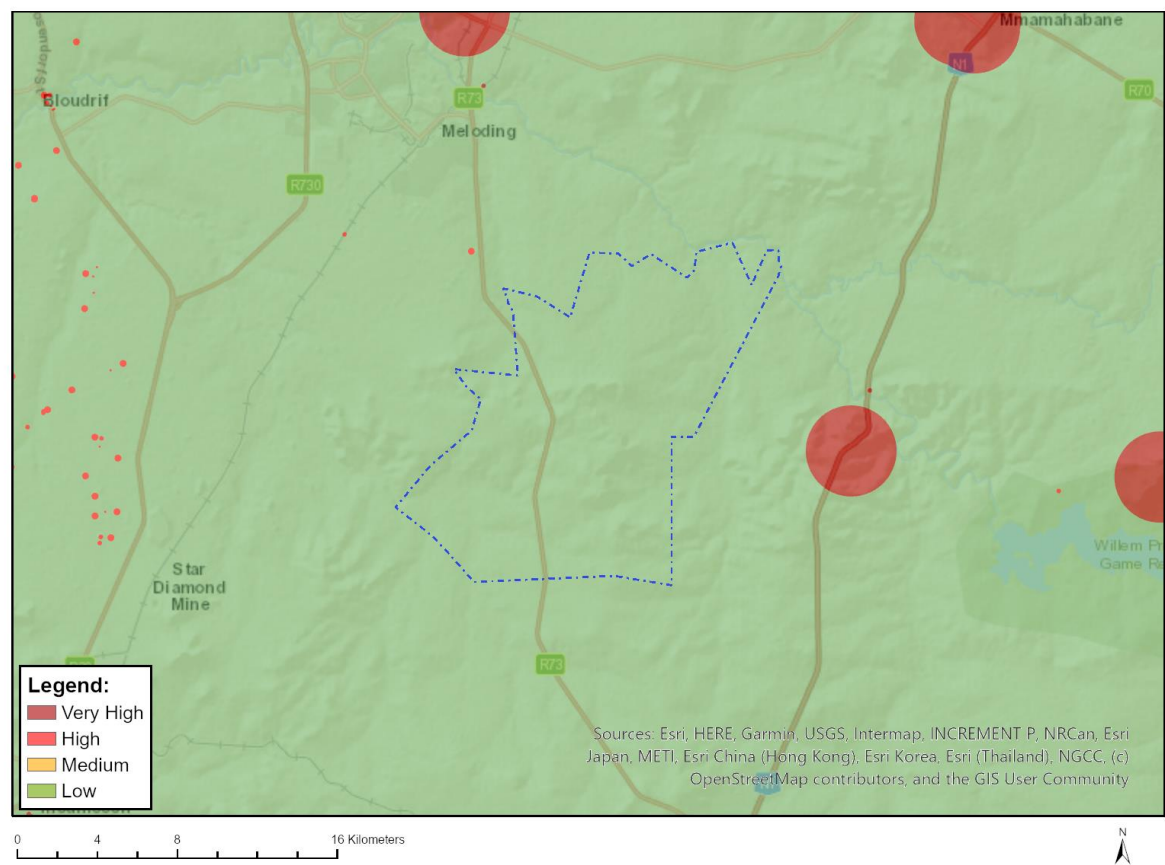


Very High sensitivity	High sensitivity	Medium sensitivity	Low sensitivity
X			

Sensitivity Features:

Sensitivity	Feature(s)
Low	Low Sensitivity
Very High	Wetlands_Depression
Very High	Wetlands_River
Very High	Wetlands_Seep
Very High	FEPA Subcatchment
Very High	Rivers

MAP OF RELATIVE ARCHAEOLOGICAL AND CULTURAL HERITAGE THEME SENSITIVITY

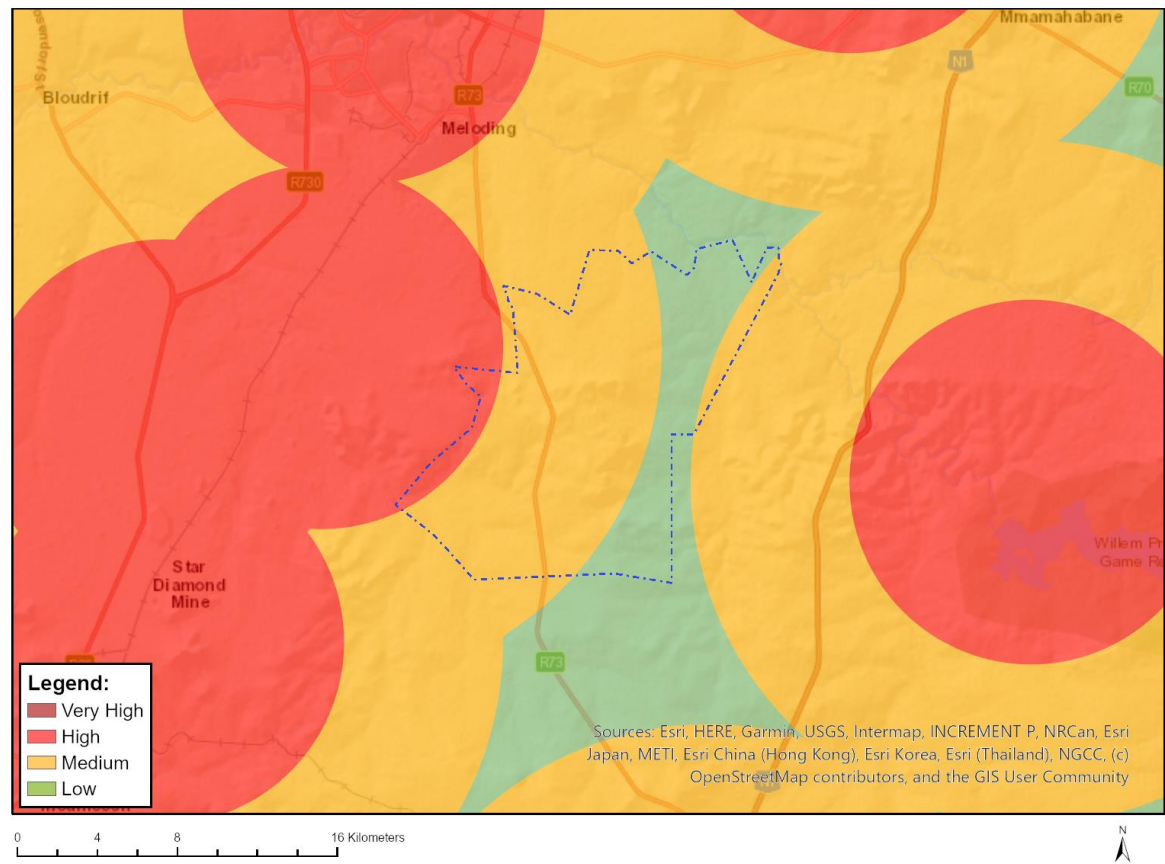


Very High sensitivity	High sensitivity	Medium sensitivity	Low sensitivity
			X

Sensitivity Features:

Sensitivity	Feature(s)
Low	Low Sensitivity

MAP OF RELATIVE CIVIL AVIATION THEME SENSITIVITY

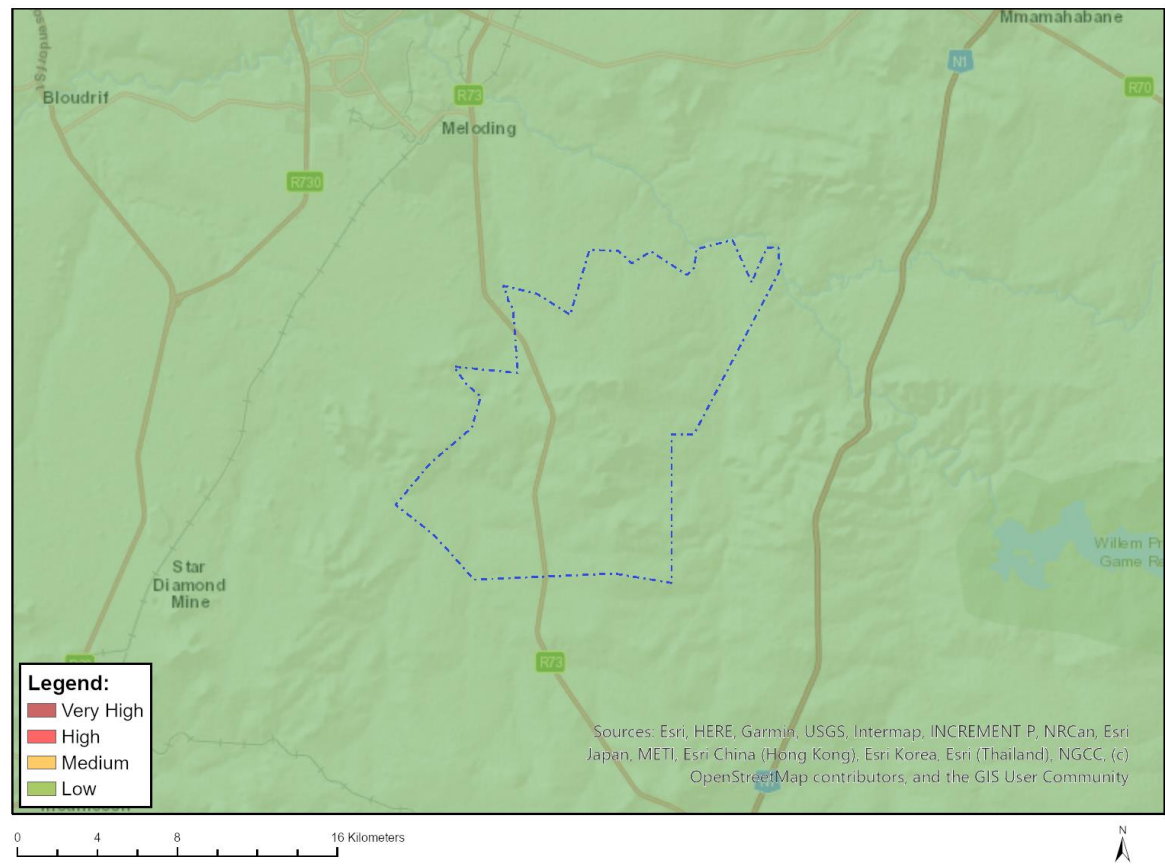


Very High sensitivity	High sensitivity	Medium sensitivity	Low sensitivity
	X		

Sensitivity Features:

Sensitivity	Feature(s)
High	Within 8 km of other civil aviation aerodrome
Low	Low sensitivity
Medium	Between 8 and 15 km of other civil aviation aerodrome

MAP OF RELATIVE DEFENCE THEME SENSITIVITY

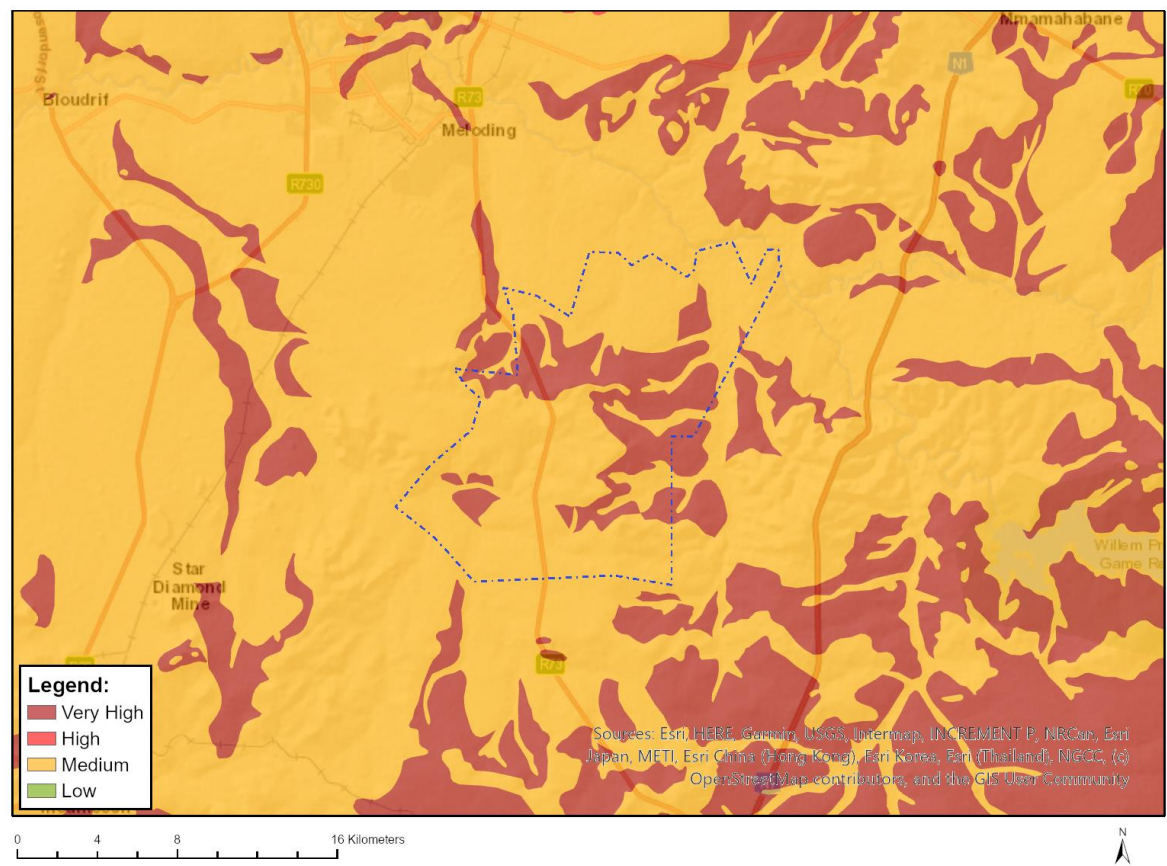


Very High sensitivity	High sensitivity	Medium sensitivity	Low sensitivity
			X

Sensitivity Features:

Sensitivity	Feature(s)
Low	Low Sensitivity

MAP OF RELATIVE PALEONTOLOGY THEME SENSITIVITY

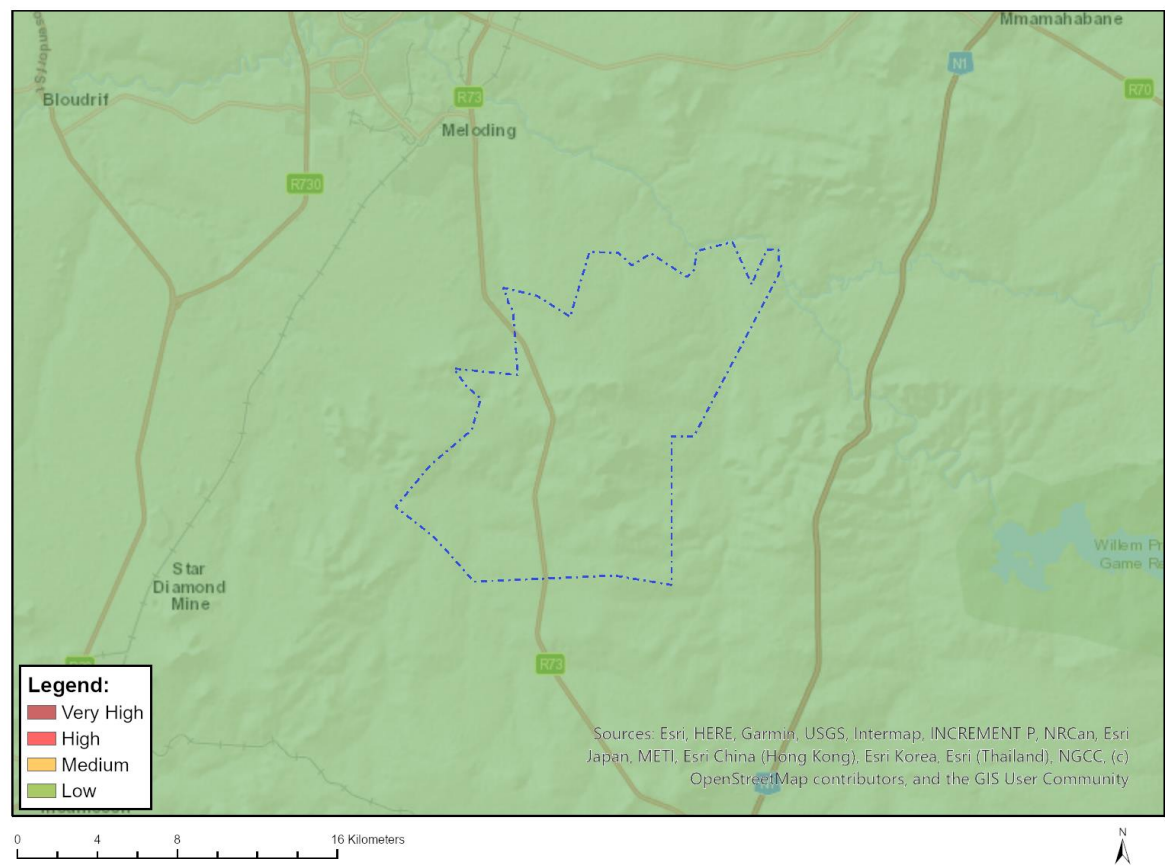


Very High sensitivity	High sensitivity	Medium sensitivity	Low sensitivity
X			

Sensitivity Features:

Sensitivity	Feature(s)
Medium	Features with a Medium paleontological sensitivity
Very High	Features with a Very High paleontological sensitivity

MAP OF RELATIVE PLANT SPECIES THEME SENSITIVITY



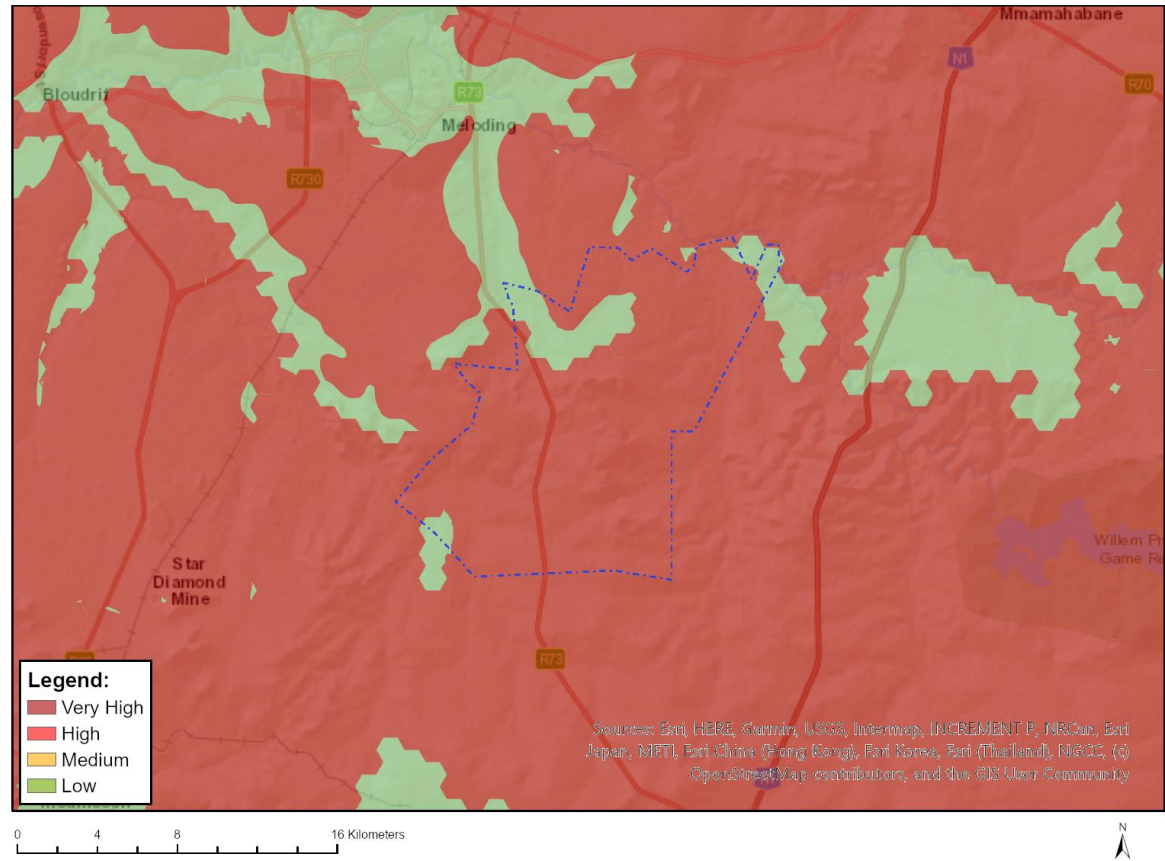
Where only a sensitive plant unique number or sensitive animal unique number is provided in the screening report and an assessment is required, the environmental assessment practitioner (EAP) or specialist is required to email SANBI at eiadatarequests@sanbi.org.za listing all sensitive species with their unique identifiers for which information is required. The name has been withheld as the species may be prone to illegal harvesting and must be protected. SANBI will release the actual species name after the details of the EAP or specialist have been documented.

Very High sensitivity	High sensitivity	Medium sensitivity	Low sensitivity
			X

Sensitivity Features:

Sensitivity	Feature(s)
Low	Low Sensitivity

MAP OF RELATIVE TERRESTRIAL BIODIVERSITY THEME SENSITIVITY



Very High sensitivity	High sensitivity	Medium sensitivity	Low sensitivity
X			

Sensitivity Features:

Sensitivity	Feature(s)
Low	Low Sensitivity
Very High	CBA 1
Very High	CBA 2
Very High	ESA 1
Very High	ESA 2
Very High	FEPA Subcatchment
Very High	National Protected Area Expansion Strategy (NPAES)
Very High	EN_Vaal-Vet Sandy Grassland