

Site Notice:

NOTIFICATION REGARDING OPPORTUNITY TO PARTICIPATE IN ENVIRONMENTAL AUTHORISATION APPLICATION PROCESSES FOR THE PROPOSED GLENORE WCM KROONDAL MINE INFRASTRUCTURE, RUSTENBURG MUNICIPALITY, NORTH WEST PROVINCE

Glenore Operations South Africa (Pty) Ltd – Western Chrome Mines (WCM) (hereafter referred to as the Applicant) has appointed Environmental Impact Management Services (EIMS) as the Environmental Assessment Practitioner (EAP) to assist with undertaking the required authorisation processes (including the statutory public participation), and to compile and submit the required documentation in support of applications for: National Environmental Management Act: NEMA (Act 107 of 1998 as amended); and National Water Act – NWA (Act 36 of 1998). Additional listed activities and/or water uses may be identified during the application processes.

Glenore Western Chrome Mines (WCM) is in the process of acquiring some of the mining and surface rights from the Clover Alloys Rustenburg Chrome Mine (RCM) to reduce the time taken to travel to the face at its Kroondal Mine and increase the mining footprint which will in turn increase productivity. In addition to utilizing the existing infrastructure at Clover Alloys RCM, the applicant wishes to develop additional facilities to use in the life of mine. The proposed new developments as well as existing infrastructure include (but are not limited to):

A parking area for permanent employees and a parking area for visitors and contractors; Employee drop-off/pick-up zone; Salvage yard; Sewage plant; Use of existing Pollution Control Dam and licensing this dam under the NWA; Surface laydown area; Shaft laydown area/Explosives Delivery Bay; Meeting venue hall (Leggite Hall); Access roads and escape roads; Two water storage dams; Compressor house; One 11kV Powerline; Administration Offices; Change houses; Engineering workshop; Stores; and Temporary laydown area (historic Lanxess Chrome Mining village area)

Kroondal mining operations are situated approximately 10 km east of Rustenburg, North-West Province. Mining at Kroondal has historically consisted of both opencast and underground mining. Currently, only underground mining is undertaken, and the old opencast areas have been closed and rehabilitated. The current underground mining is taking place in close proximity to the Clover Alloys RCM mining rights areas. Miners' underground travel time will be reduced by approximately 50% through Glenore WCM acquiring the surface rights on Portion 11 of the farm Rietfontein 338 JQ and mining right (MR336), which will in turn increase production and ensure the long-term survival of the business.

EIMS will be following the procedures defined in the Environmental Impact Assessment (EIA) Regulations (GRN982 of 2014, as amended) for undertaking a Basic Assessment process. In accordance with Chapter 6 of the EIA Regulations, a public participation process will be undertaken. You are hereby invited to register and comment on the proposed project and applications. In order to ensure that you are identified and registered as an IBAP and that your comments are captured, please submit your name, contact details, and the reason for your interest, in writing or telephonically by no later than 15 November 2024 to EIMS. Please note that only registered IBAPs will be informed of future project information and opportunities for participation. By registering as an interested and affected party you consent to the collection and processing of your personal information as per the EIMS Privacy Notice available at www.eims.co.za/public-participation. In order to avoid missing out on opportunities for public participation please submit IBAP registrations, or any queries, comments, or concerns with regard to this application, as soon as possible to EIMS.

KENNISGEWING MET BETREKING TOT GEELETHEID OM DEEL TE NEEM AAN OMGEWINGSMAGTIGING AANSOEKPROSESSE VIR DIE VOORGESTELDE GLENORE WCM KROONDAL MYNINFRASTRUKTUUR, RUSTENBURG MUNISIPALITEIT, NOORDWES PROVINSIE

Glenore Operations South Africa (Edms) Bpk – Western Chrome Mines (WCM) (hierna na verwys as die Aansoeker) het Environmental Impact Management Services (EIMS) as die Omgewingsassesseringspraktisiër (EAP) aangestel om te assisteer met die vereide magtigingsprosesse (insluitend die statutêre publieke deelname), en om die vereide dokumentasie saam te stel en in te dien ten ondersteuning van aansoek vir Wiet op Nasionale Omgewingsbestuur- WNCB (Wet 107 van 1998 soos gewysig); en Nasionale Waterwet – NWA (Wet 36 van 1998). Bykomende geïntegreerde aktiwiteite en/of watergebruik kan tydens die aansoekproses geïdentifiseer word.

Glenore Western Chrome Mines (WCM) is besig om van die mynbou- en oppervlakte van die Clover Alloys Rustenburg Chrome Mines (RCM) te verkry, om die tyd wat dit neem om na die saaij by sy Kroondal myn te reis, te verminder en die mynbou-saaijtyd te verhoog, wat op sy beurt die produktiwiteit sal verhoog. Benewens die gebruik van die bestaande infrastruktuur by Clover Alloys RCM, wil die aansoeker bykomende fasiliteite ontwikkel om in die lewe van myn te gebruik. Die voorgestelde nuwe ontwikkelings sowel as bestaande infrastruktuur sluit in (meer is nie beperk nie tot):

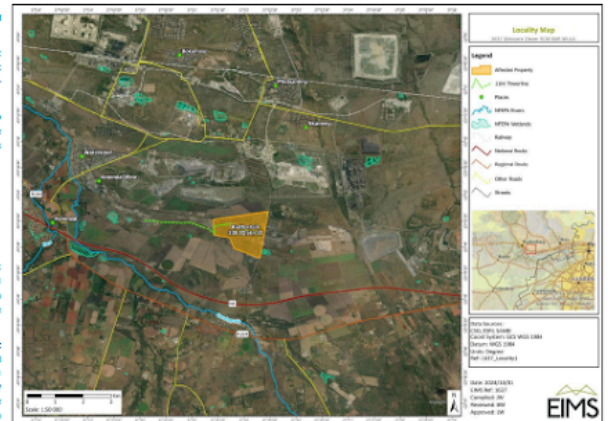
'n Parkeerarea vir permanente werknemers en Parkeerarea vir besoekers en kontrakteurs; Werknemer afhaal/ophaal zone; Bergingswerf; Noolaanleg; Gebruik van bestaande Besoedlingsbeheerplan en lisensiering van hierdie dam onder die NWA; Oppervlakte reërlêre area; Slag reërlêre area/Plasfontein Afwateringsbak; Vergaderingsaal (Leggite-haal); Toegangsweë en noodweë; Twee wateropslaggamme; Kompressorhuis; Een 11kV-lyn; Administrasiekantore; Kleedkamers; Ingenieurswerkswinkel; Store; en Tydse reërlêre area (historiese Lanxess Chrome-myn-dorp gebied).

Kroondal mynbedrywighede is ongeveer 10 km Oos van Rustenburg, Noordwes Provinsie, geleë. Mynbou by Kroondal het histories bestaan uit beide oopgroef- en ondergrondse mynbou. Tans word slegs ondergrondse mynbou onderneem, en die ou oopgroef areas is gesluit en gerehabiliteer. Die huidige ondergrondse mynbou vind plaas in die omgewing van die Clover Alloys RCM-mynreghede. Mynwerkers se ondergrondse reis tyd sal met ongeveer 50% verminder word deurdat Glenore WCM die oppervlakte op Gedeelte 11 van die plaas Rietfontein 338 JQ en mynreghede (MR336) bekom, wat op sy beurt produktie sal verhoog en die langtermyn-volhoubaarheid van die besigheid sal verseker.

EIMS sal die prosedures volg wat in die Omgewingsimpakbeoordeling (OIB) Regulasies (GRN982 van 2014, soos gewysig) omskryf is om 'n Basiese Evalueringproses te onderneem. In ooreenstemming met Hoofstuk 6 van die OIB-regulasies, sal 'n publieke deelnameproses onderneem word. U word hiermee uitgenooi om te registreer en kommentaar te lewer op die voorgestelde projek en aansoek. Om te verseker dat jy geïdentifiseer en geregistreer word as 'n IBAP, en dat jou kommentaar ingesluit word, dien asseblief jou naam, kontakbesonderhede, en die rede vir jou belangstelling, skriftelik of teelies nie later as 15 November 2024 by EIMS in. Neem asseblief kennis dat slegs geregistreerde IBAP's ingesluit sal word oor toekomstige projekinligting en geleenthede vir deelname. Deur te registreer as 'n belangstheende en geïntegreerde party stem jy in tot die insameling en verwerking van jou persoonlike inligting soos per die EIMS Privaatheidskennisgewing beskikbaar by www.eims.co.za/public-participation. Om te verhoed dat geleenthede vir publieke deelname misgeloop word, dien asseblief IBAP-registrasies, of enige navrese, kommentaar of bekommernisse met betrekking tot hierdie aansoek, so gou moontlik in by EIMS by.

Contact Person/ Kontak Persoon: Alexander Msipa
EIMS Reference Number/ EIMS Verwysingsnommer: 1637
Postal Address/ Posadres: P.O. Box 2083, Pinegowrie 2123

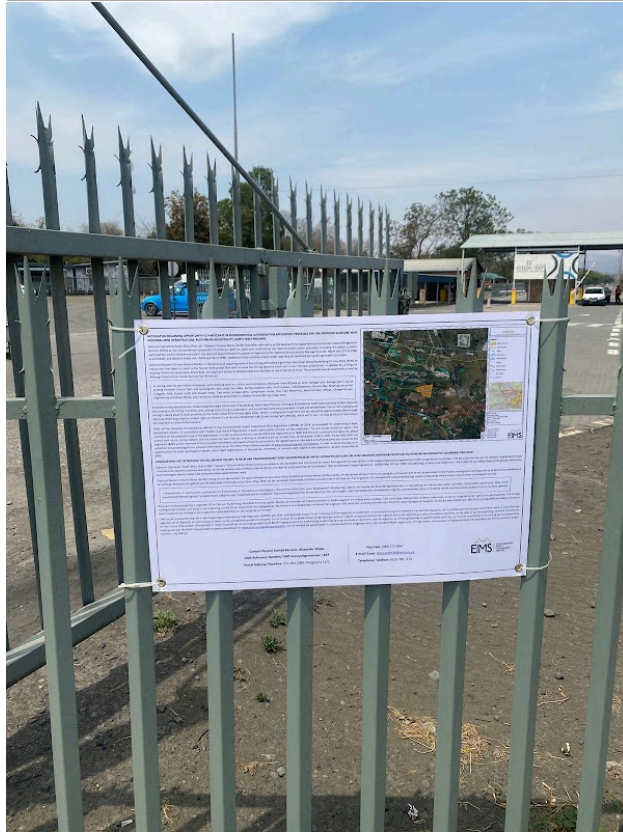
Fax/ Faks: (086) 571 9047
E-mail/ E-pos: GlenoreRCM@eims.co.za
Telephone/ Telefoon: (011) 789 7170



Locality Map:

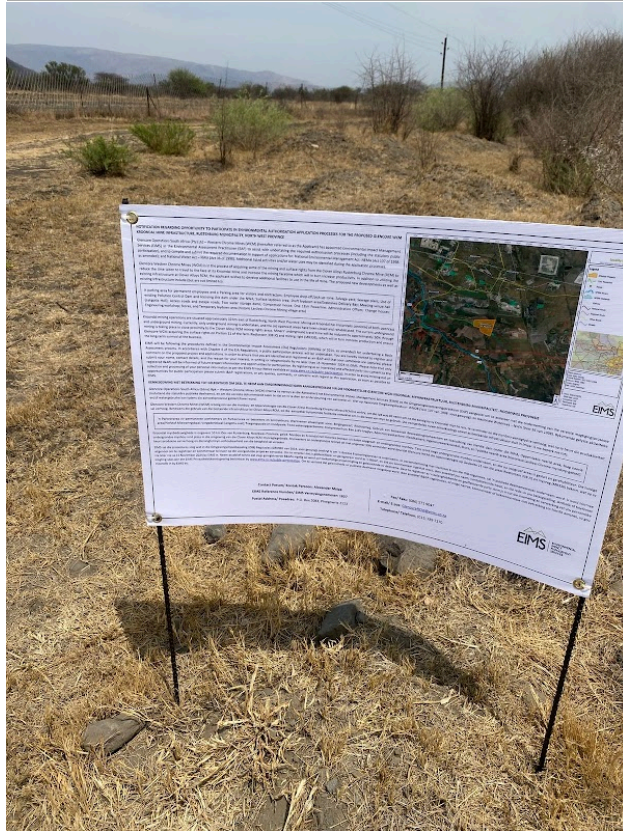


A1 Notice: 15/10/2024 11:20:54; GPS Coordinates: -25.722290, 27.374130



Entrance to RCM Mine Offices

A1 Notice: 15/10/2024 11:33:55; GPS Coordinates: -25.723550, 27.363500



Boundary fence where new Access Road Will Be

A1 Notice: 15/10/2024 11:42:12; GPS Coordinates: -25.723997, 27.359812



T-Junction next to proposed laydown area.

A1 Notice: 15/10/2024 11:55:14; GPS Coordinates: -25.721409, 27.335447



End of Powerline Route (Project Boundary)