

# Proposed Delphi Substation Expansion

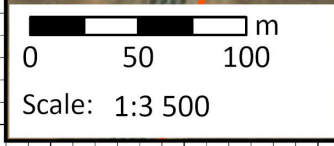
1627 NTCSA Delphi Substation Expansion BA WUL

- ### Legend
- Existing Delphi Substation (7.4211 Ha)
  - Delphi Substation Expansion (1.5903 Ha)
  - Affected Property Boundary (24.3398 Ha)
  - Farm Portions
  - Arterial Route
  - Centre Point



Data Sources:  
CSG; ESRI; SANBI  
Coord System: GCS WGS 1984  
Datum: WGS 1984  
Units: Degree  
Ref: 1627\_Locality\_rev1

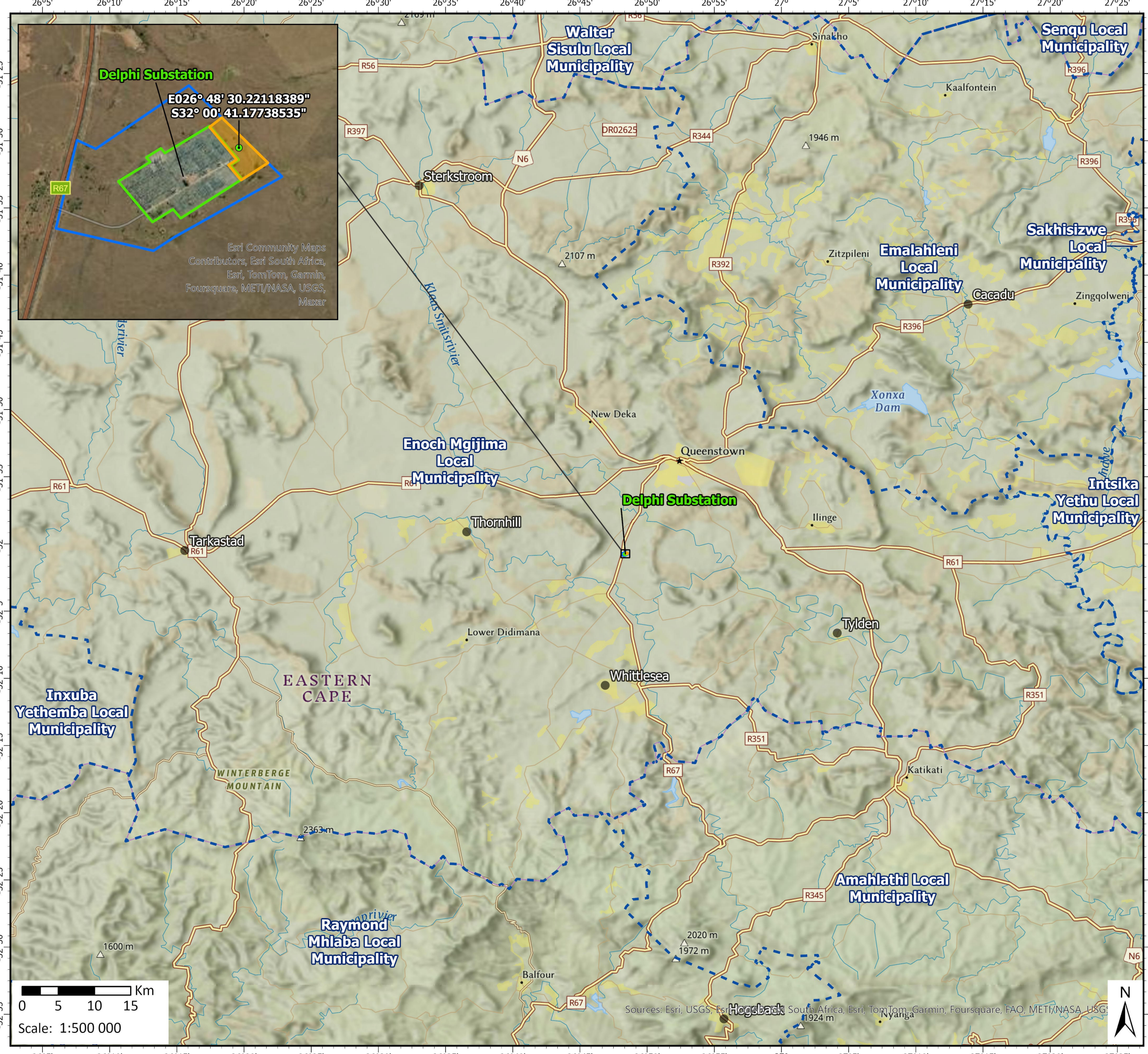
Date: 2024/07/22  
EIMS Ref: 1627  
Compiled: JW  
Reviewed: QM  
Approved: LW



Substation Expansion Area (Shaded in Yellow) = 1.5903 Ha







# Regional Locality Map

1627 NTCSA Delphi Substation Expansion BA WUL

**Legend**

- Existing Delphi Substation
- Delphi Substation Expansion
- Affected Property Boundary
- Local Municipalities
- Towns



Data Sources:  
CSG; ESRI  
Coord System: GCS WGS 1984  
Datum: WGS 1984  
Units: Degree  
Ref: 1627\_Regional\_Locality

Date: 2024/07/22  
EIMS Ref: 1627  
Compiled: JW  
Reviewed: QM  
Approved: LW



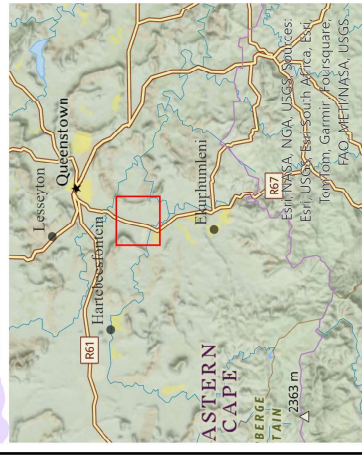


# Locality Map

1627 NTCSA Delphi Substation Expansion BA WUUL

## Legend

- Existing Delphi Substation
- Delphi Substation Expansion
- Affected Property Boundary
- Farm Portions
- NFEPA Wetlands
- NFEPA Rivers
- Arterial Route
- Places
- Centre Point
- Critical Biodiversity Areas
- CBA 1
- CBA 2



Data Sources:

CSG: ESRI, SANBI

Coord System: GCS WGS 1984

Datum: WGS 1984

Units: Degree

Ref: 1627\_Locality\_1

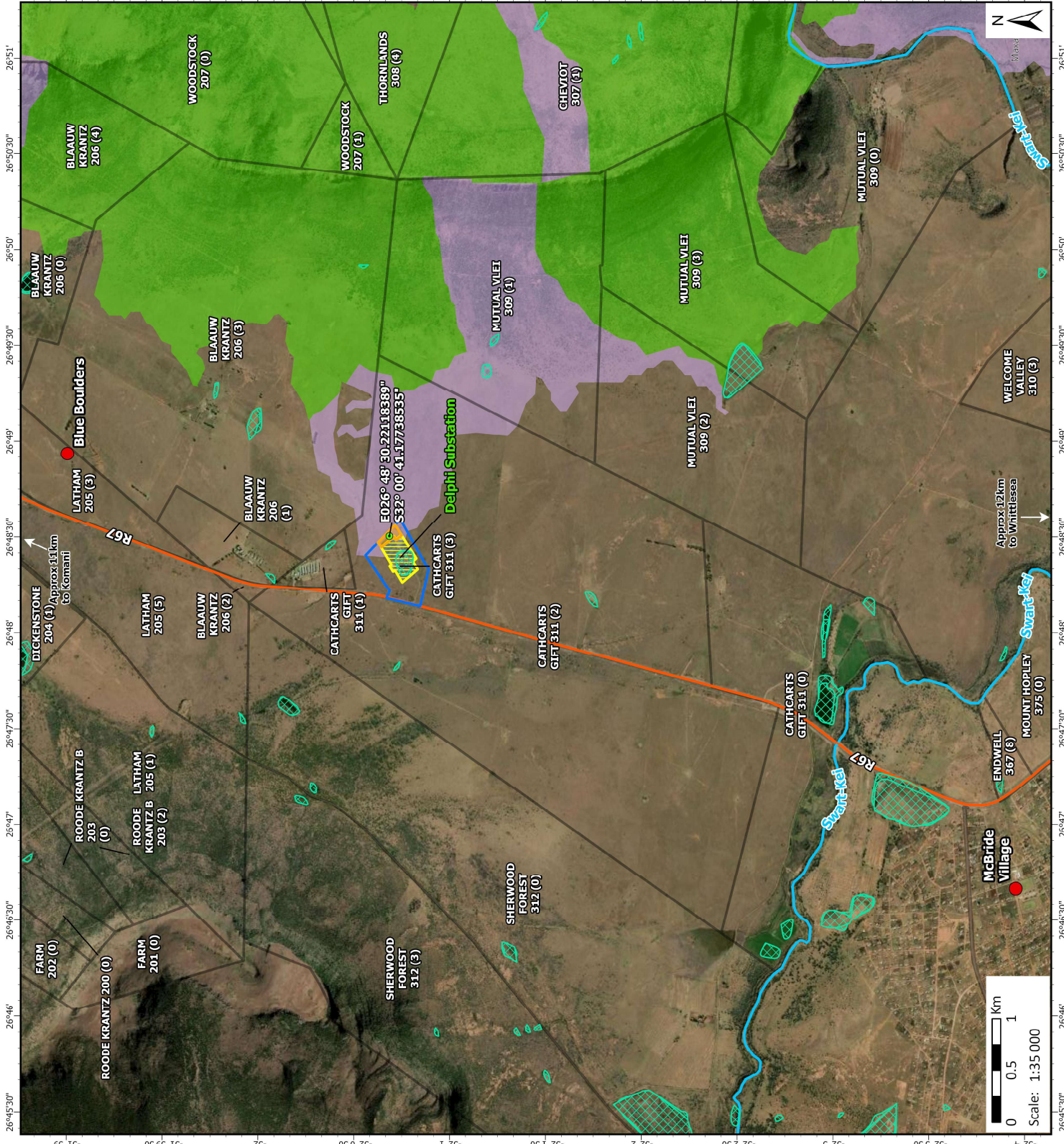
Date: 2024/07/18

EMS Ref: 1627

Compiled: JW

Reviewed: QM

Approved: LW





# EGI & REDZs Map

1627 NTCSA Delphi Substation Expansion BA WUL

## Legend

- Delphi Substation
- Phase 1 REDZs
- Phase 2 Proposed REDZs
- EGI Corridors
- International corridor
- Central corridor
- Northern corridor
- Eastern corridor
- Western corridor
- EGI Expansion Corridors
- EGI East
- EGI West

## Data Sources:

CSG; ESRI; DFFE  
Coord System: GCS WGS 1984  
Datum: WGS 1984  
Units: Degree  
Ref: 1627\_EGI\_REDZs\_1

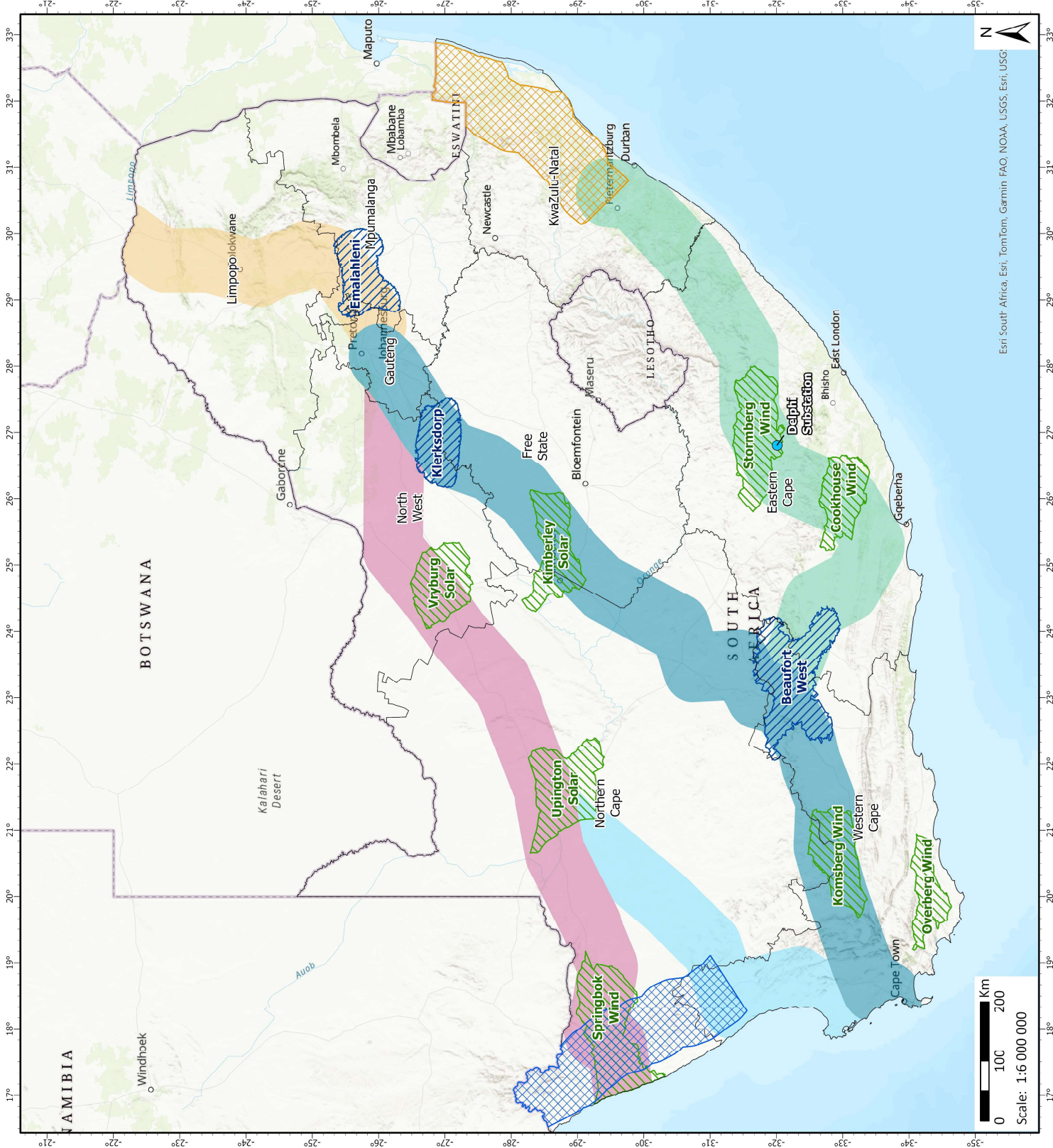
Date: 2024/07/18

EIMS Ref: 1627

Compiled: JW

Reviewed: QM

Approved: LW








Esri South Africa, Esri, TomTom, Garmin, NOAA, USGS, Esri, USGS

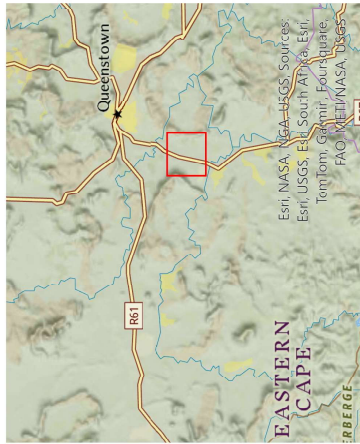


## Topography Map

1627 NTCSA Delphi Substation Expansion BA WUL

### Legend

-  Delphi Substation Expansion
-  Affected Property Boundary
-  Arterial Route
-  Places
-  Contour Lines (20m)



### Data Sources:

CSG; ESRI  
Coord System: GCS WGS 1984  
Datum: WGS 1984  
Units: Degree  
Ref: 1627\_Topography

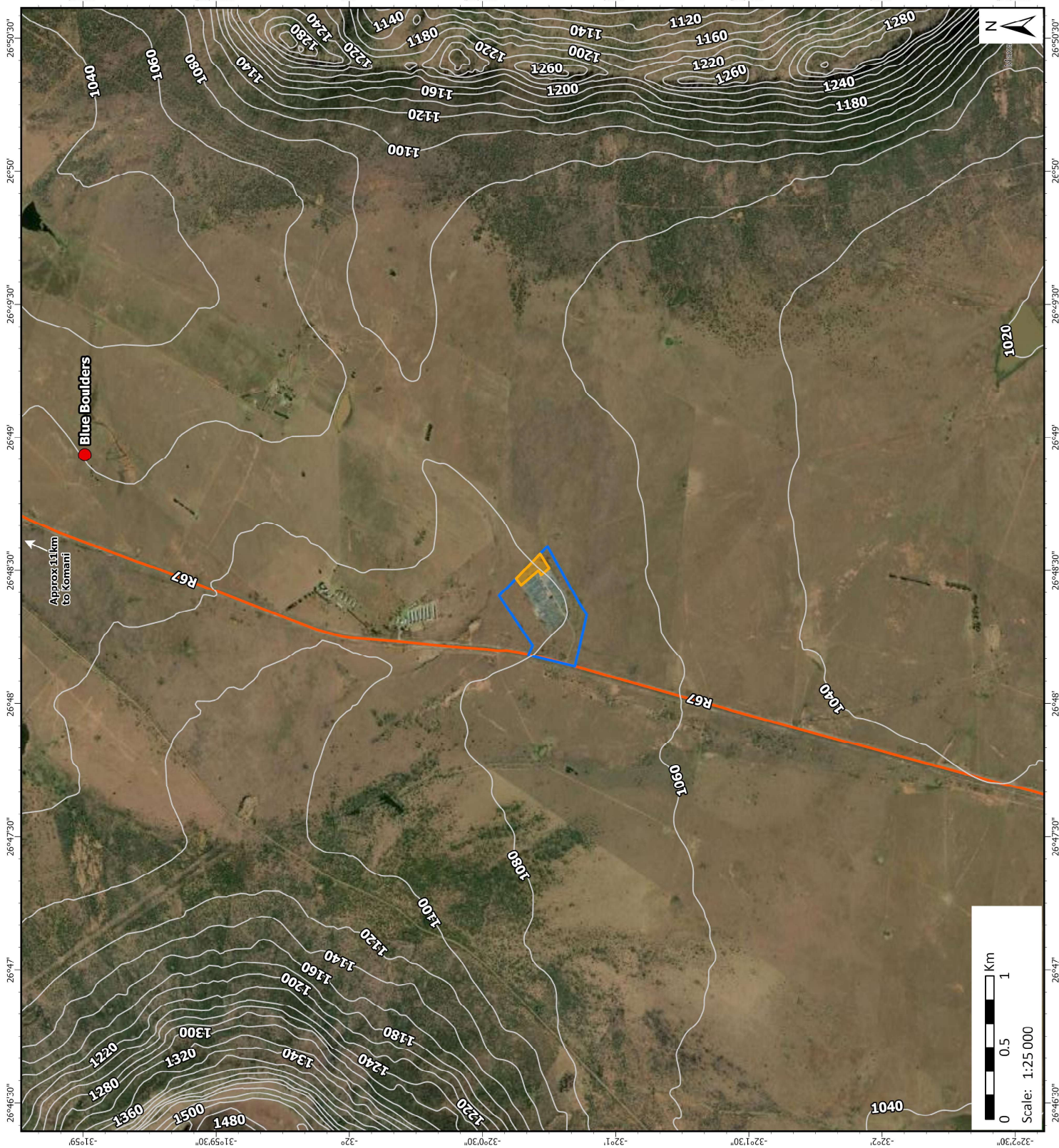
Date: 2024/07/10

EIMS Ref: 1627

Compiled: JW

Reviewed: QM

Approved: LW





# Simplified Geology Map

1627 NTCSA Delphi Substation Expansion BA

## Legend



Delphi Substation Expansion



Affected Property Boundary



Arterial Route



Places

## Geological Subgroup



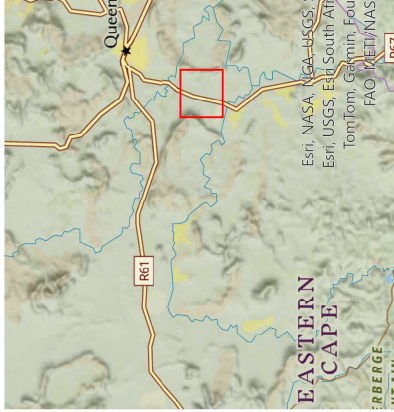
Alluvium



Burgersdorp - Red and greenish-grey mudstone, subordinate sandstone



Karoo Dolerite - Network of dolerite sills, sheets and dykes, mainly intrusive into the Karoo Supergroup



## Data Sources:

CSG; ESRI; Council for Geoscience

Coord System: GCS WGS 1984

Datum: WGS 1984

Units: Degree

Ref: 1627\_Geology

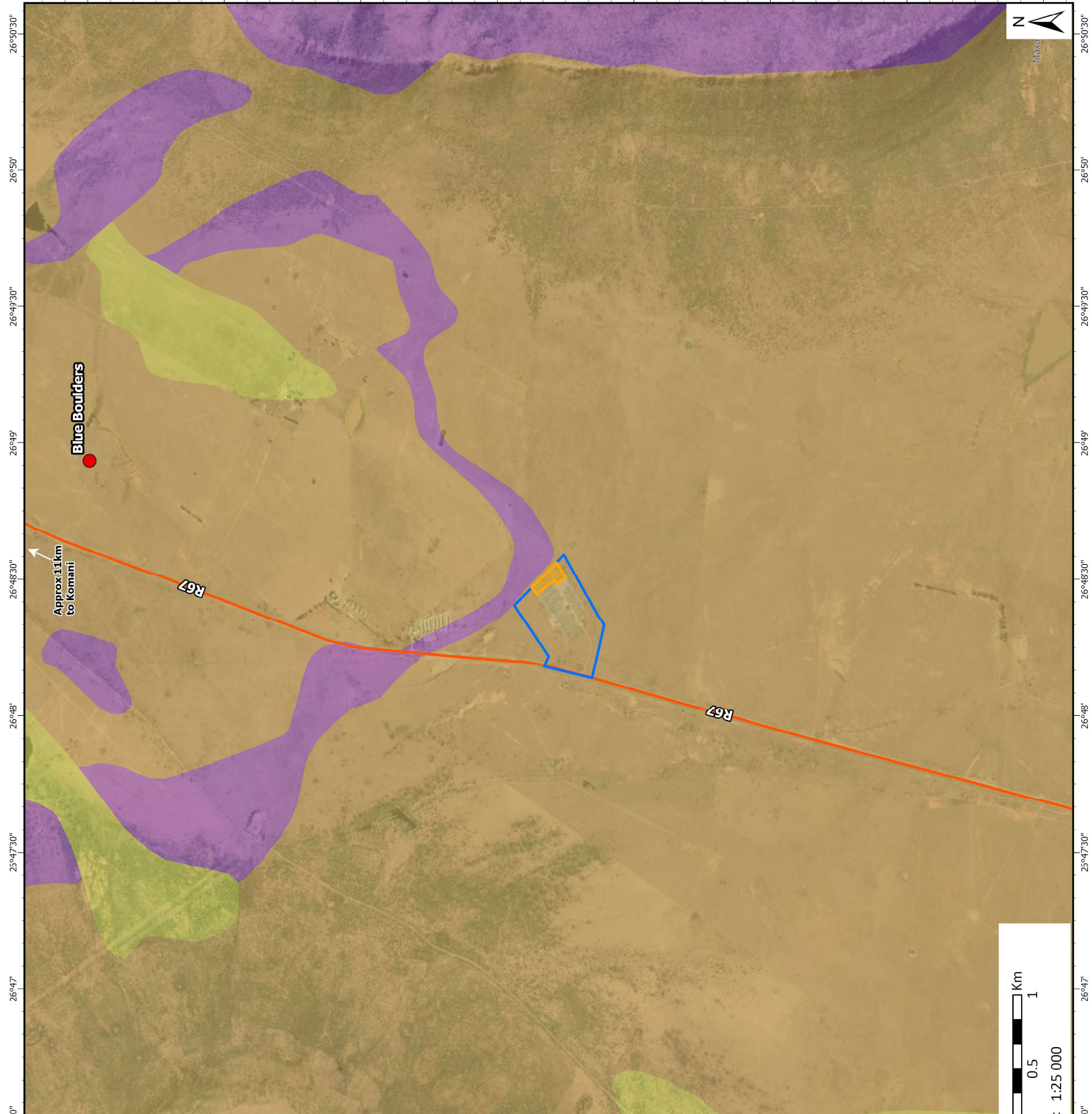
Date: 2024/07/10

EIMS Ref: 1627

Compiled: JW

Reviewed: QM

Approved: LW

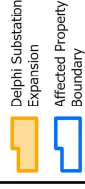




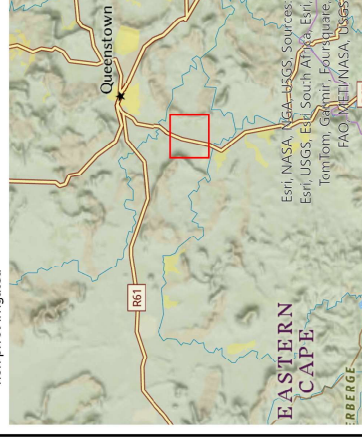
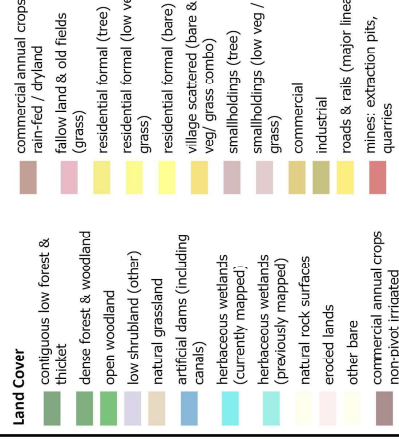
# Land Cover Map

1627 NTCSA Delphi Substation Expansion BA WUUL

## Legend



## Land Cover



## Data Sources:

CSG; ESRI; DFFE

Coord System: GCS WGS 1984

Datum: WGS 1984

Units: Degree

Ref: 1627\_LandCover

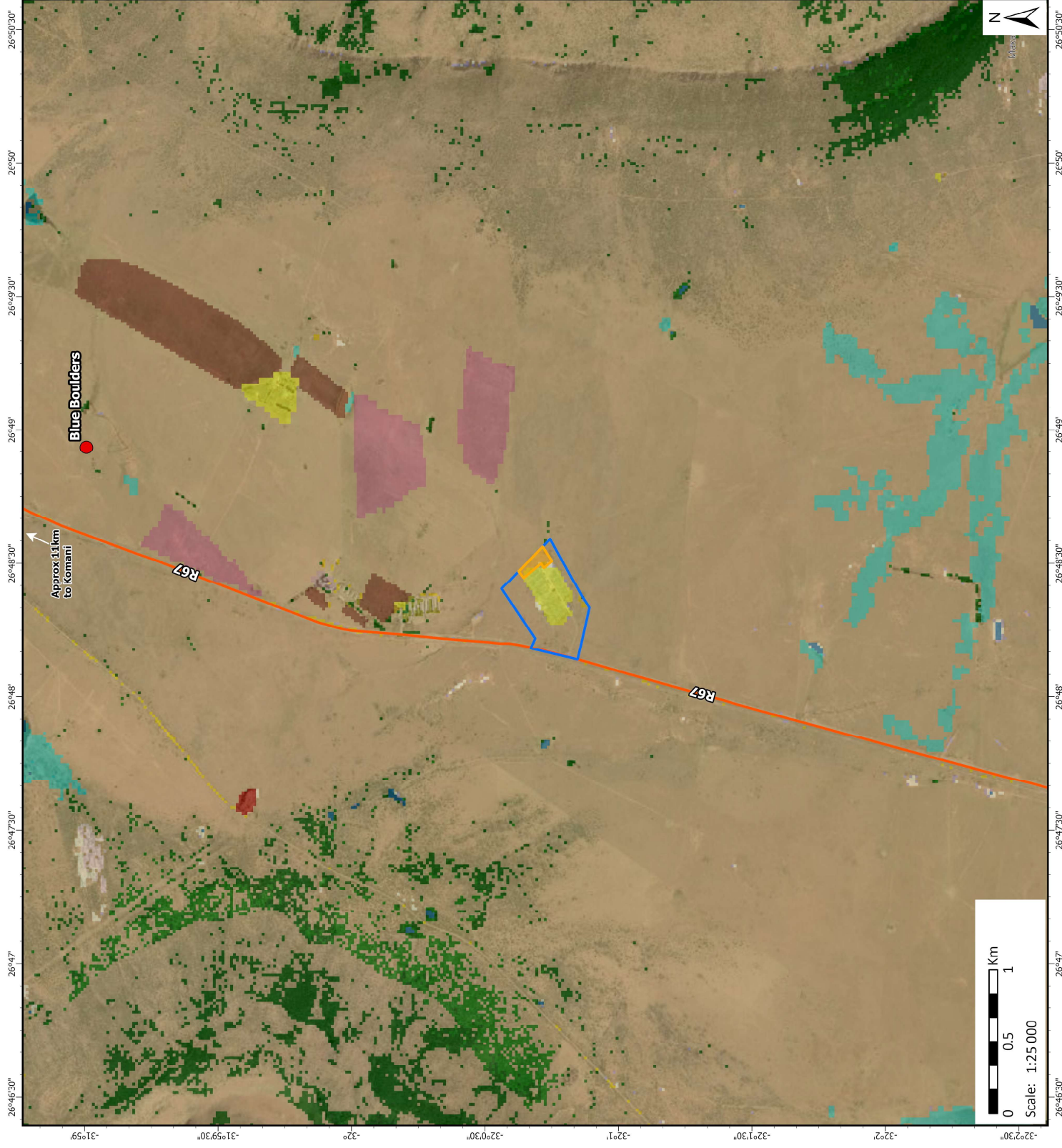
Date: 2024/07/10

EIMS Ref: 1627

Compiled: JW

Reviewed: QM

Approved: LW

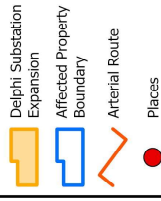




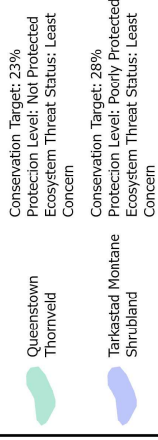
## Vegetation Status

1627 NTCSA Delphi Substation Expansion BA WUL

### Legend

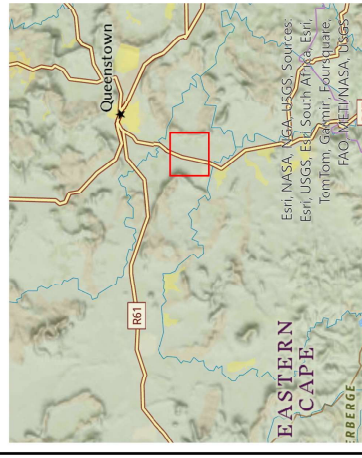


### Vegetation Status



Conservation Target: 23%  
Protection Level: Not Protected  
Ecosystem Threat Status: Least Concern

Conservation Target: 28%  
Protection Level: Poorly Protected  
Ecosystem Threat Status: Least Concern



### Data Sources:

CSG; ESRI; SANBI

Coord System: GCS WGS 1984

Datum: WGS 1984

Units: Degree

Ref: 1627\_VegetationStatus

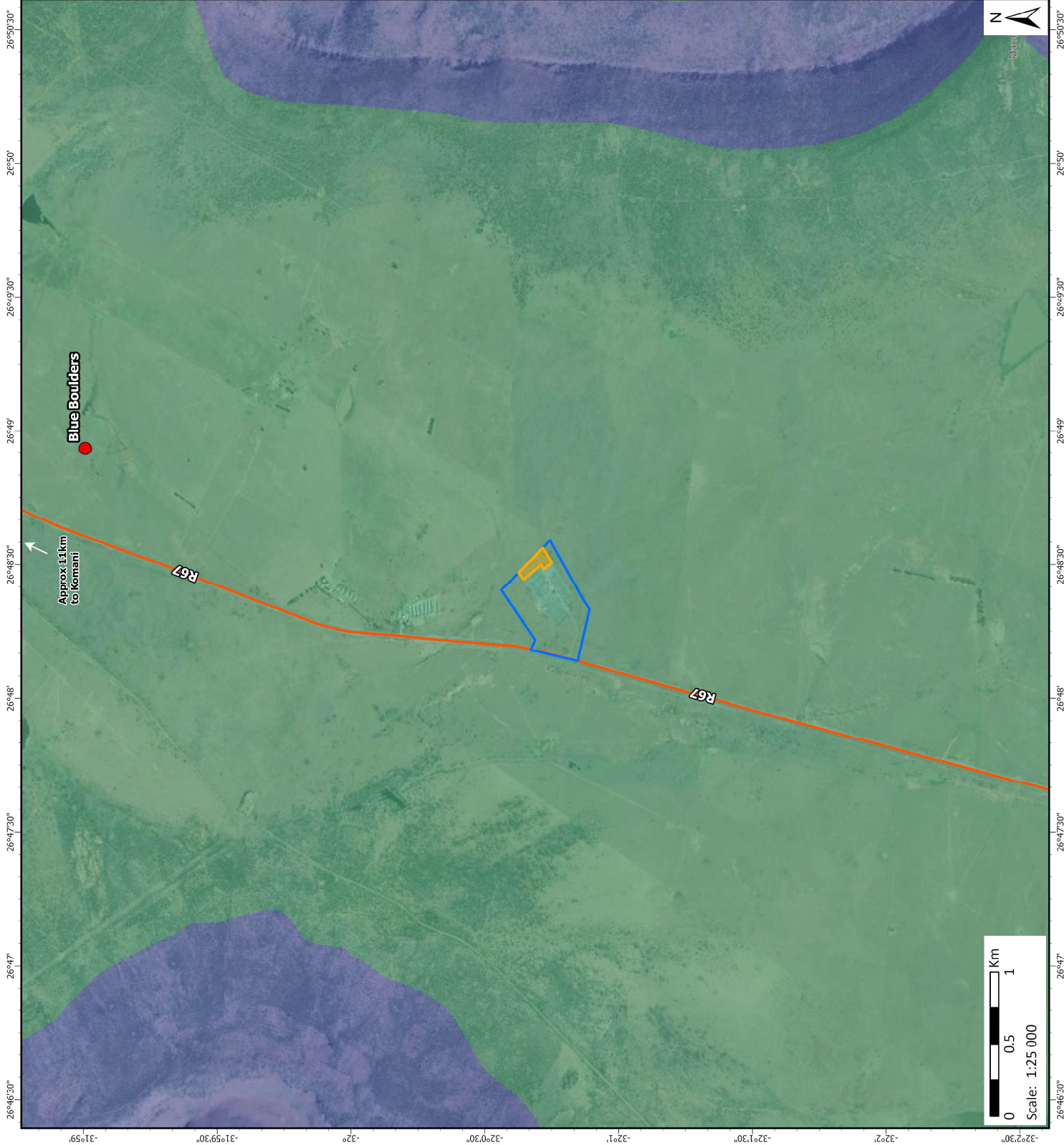
Date: 2024/07/10

EMS Ref: 1627

Compiled: JW

Reviewed: QM

Approved: LW





# Terrestrial Habitat Sensitivity Map

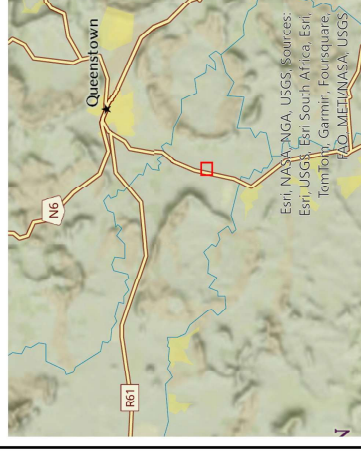
1627 NTCSA Delphi Substation Expansion BA WUL

## Legend

- Delphi Substation Expansion
- Affected Property Boundary
- Arterial Route

## Terrestrial Habitat Sensitivity

- Least Concern
- Low



## Data Sources:

CSG; ESRI  
Coord System: GCS WGS 1984  
Datum: WGS 1984  
Units: Degree  
Ref: 1627\_Terrestrial\_Sens

Date: 2024/07/10  
EIMS Ref: 1627  
Compiled: JW  
Reviewed: QM  
Approved: LW





# Avifauna Habitat Sensitivity Map

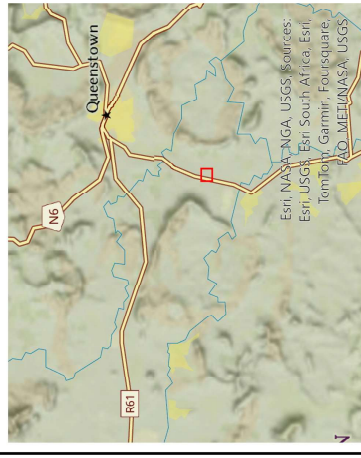
1627 NTCSA Delphi Substation Expansion BA WUUL

## Legend

- Delphi Substation Expansion
- Affected Property Boundary
- Arterial Route

## Avifauna Habitat Sensitivity

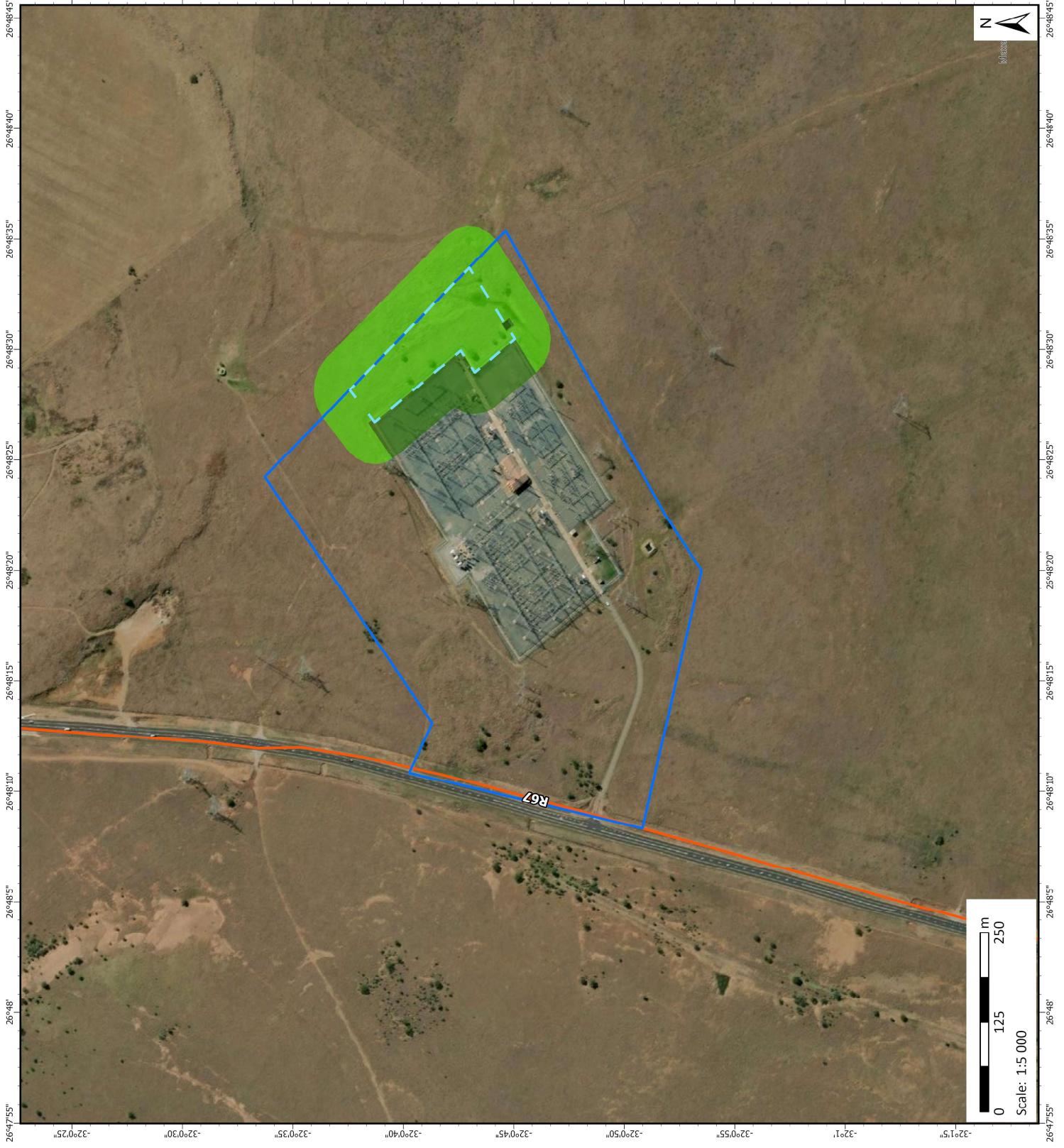
- Least Concern
- Low



## Data Sources:

CSG; ESRI  
Coord System: GCS WGS 1984  
Datum: WGS 1984  
Units: Degree  
Ref: 1627\_Avifauna\_Sens

Date: 2024/07/10  
EIMS Ref: 1627  
Compiled: JW  
Reviewed: QM  
Approved: LW







## Soil Forms Map

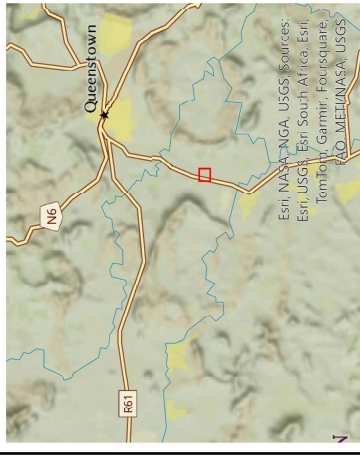
1627 NTCSA Delphi Substation Expansion BA WUL

### Legend

- Delphi Substation Expansion
- Affected Property Boundary
- Arterial Route

### Soil Forms

- Bethesda
- Glenrosa
- Tubatse



### Data Sources:

CSG; ESRI  
Coord System: GCS WGS 1984  
Datum: WGS 1984  
Units: Degree  
Ref: 1627\_Soil\_Sers

Date: 2024/07/10  
EIMS Ref: 1627  
Compiled: JW  
Reviewed: QM  
Approved: LW







# Land Potential Map

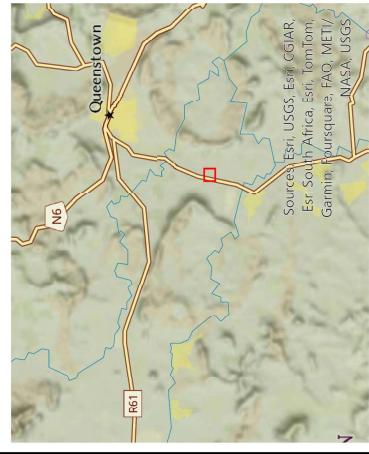
1627 NTCSA Delphi Substation Expansion BA WUL

## Legend

- Delphi Substation Expansion
- Affected Property Boundary
- Arterial Route

## Land Potential

- L6
- L7



## Data Sources:

CSG; ESRI  
Coord System: GCS WGS 1984  
Datum: WGS 1984  
Units: Degree  
Ref: 1627\_LandPotential

Date: 2024/07/10  
EIMS Ref: 1627  
Compiled: JW  
Reviewed: QM  
Approved: LW





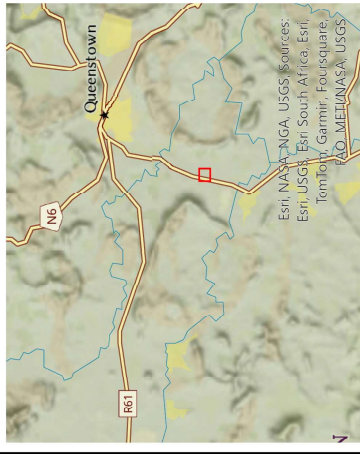
**Overall Land Capability Sensitivity Map**  
1627 NTCSA Delphi Substation Expansion BA WUL

**Legend**

- Delphi Substation Expansion
- Affected Property Boundary
- Arterial Route

Overall Site Verified Land Capability Sensitivity

Low



**Data Sources:**

CSG; ESRI  
Coord System: GCS WGS 1984  
Datum: WGS 1984  
Units: Degree  
Ref: 1627\_OverallLandCapability\_Sens

Date: 2024/07/10  
EIMS Ref: 1627  
Compiled: JW  
Reviewed: QM  
Approved: LW





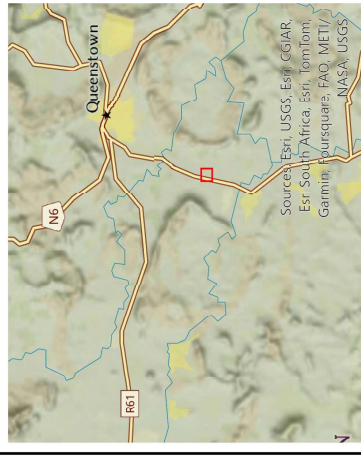


## Heritage Sensitivity Map

1627 NTCSA Delphi Substation Expansion BA WUL

### Legend

- Delphi Substation Expansion
- Affected Property Boundary
- Arterial Route
- DE001



### Data Sources:

CSG; ESRI  
Coord System: GCS WGS 1984  
Datum: WGS 1984  
Units: Degree  
Ref: 1627\_Heritage\_Sens

Date: 2024/07/10  
EIMS Ref: 1627  
Compiled: JW  
Reviewed: QM  
Approved: LW





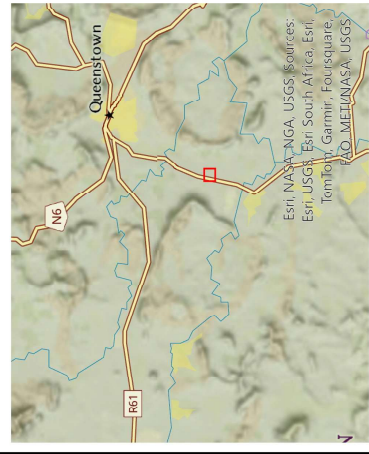


# Palaeontological Sensitivity Map

1627 NTCSA Delphi Substation Expansion BA WUL

## Legend

- Delphi Substation Expansion
- Affected Property Boundary
- Arterial Route
- High Sensitivity
- Fossil Finds



Data Sources:  
CSG; ESRI  
Coord System: GCS WGS 1984  
Datum: WGS 1984  
Units: Degree  
Ref: 1627\_Palaeo\_Sensitivity

Date: 2024/07/10  
EMS Ref: 1627  
Compiled: JW  
Reviewed: QM  
Approved: LW







# Maximum Sensitivity Map

1627 NTCSA Delphi Substation Expansion BA WUL

**Legend**

Delphi Substation Expansion

Affected Property Boundary

Arterial Route

DE001

Fossil Finds

30m Buffer

Palaeontological Sensitivity (High)

Maximum Sensitivity

Low



Data Sources:  
CSG; ESRI  
Coord System: GCS WGS 1984  
Datum: WGS 1984  
Units: Degree  
Ref: 1627\_Sensitivity

Date: 2024/07/26  
EIMS Ref: 1627  
Compiled: JW  
Reviewed: QM  
Approved: LW



Source: Esri, Maxar, Earthstar Geographics, and the GIS User Community