

Locality Map

1607 Kelvin Power Station CCGT EIA WULA

Legend

- Kelvin Power Station Boundary
- Proposed Kelvin CCGT Power Plant
- Centre Point of Site
- NFEPA Rivers
- NFEPA Wetlands
- Places
- Railway

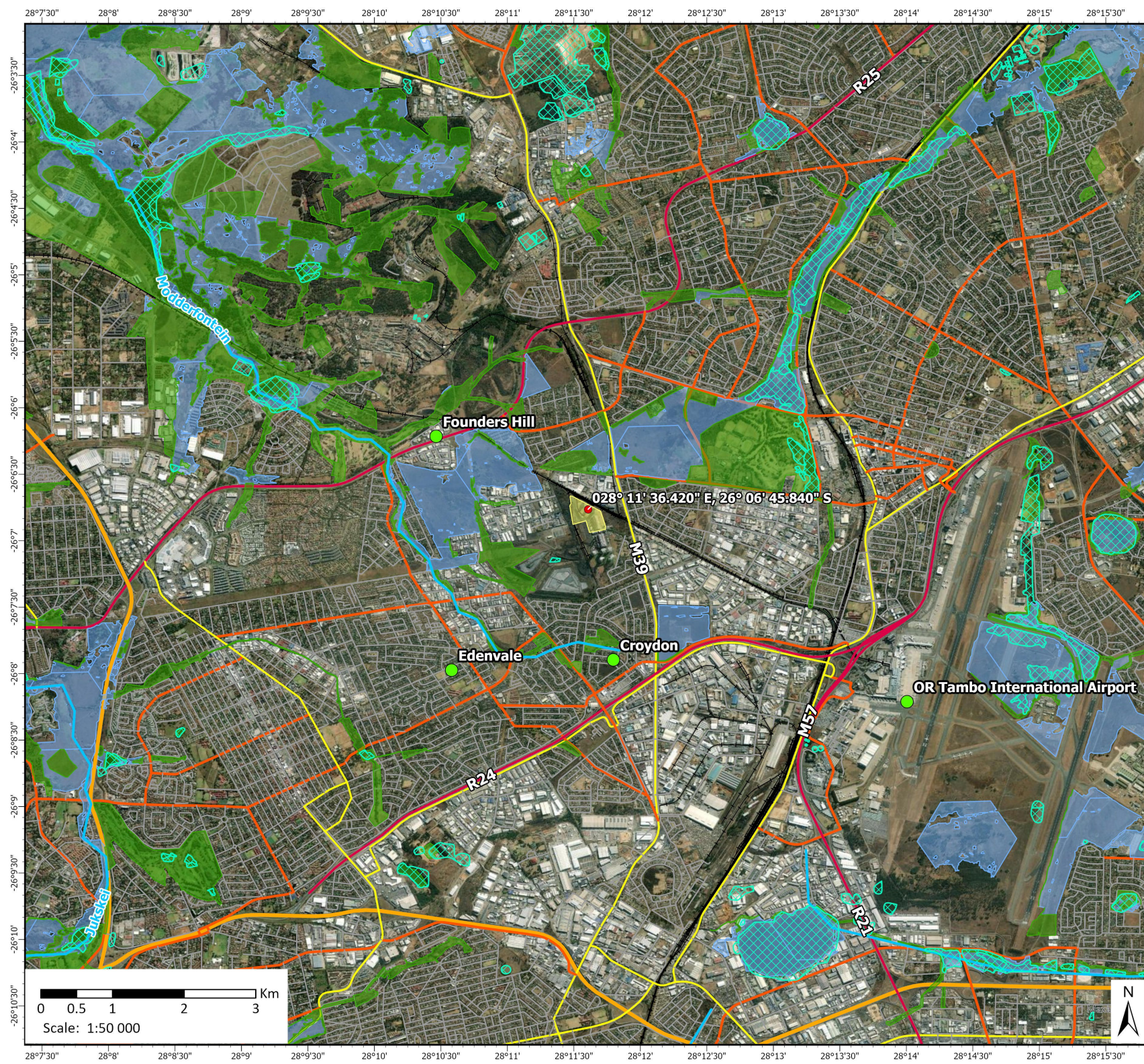
Roads

- National Freeway
- Arterial Route
- Secondary Road
- Main Road
- Street

Data Sources:
 CSG; ESRI
 Coord System: GCS WGS 1984
 Datum: WGS 1984
 Units: Degree
 Ref: 1607_Locality_1

Date: 2024/03/08
 EIMS Ref: 1607
 Compiled: JW
 Reviewed: JP
 Approved: LW





Listing Notice 3 Applicability Map

1607 Kelvin Power Station CCGT EIA WULA

- Legend**
- Proposed Kelvin CCGT Power Plant
 - Centre Point of Site
 - NFEPA Rivers
 - NFEPA Wetlands
 - Places
 - Railway

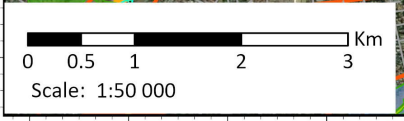
- Roads**
- National Freeway
 - Arterial Route
 - Secondary Road
 - Main Road
 - Street

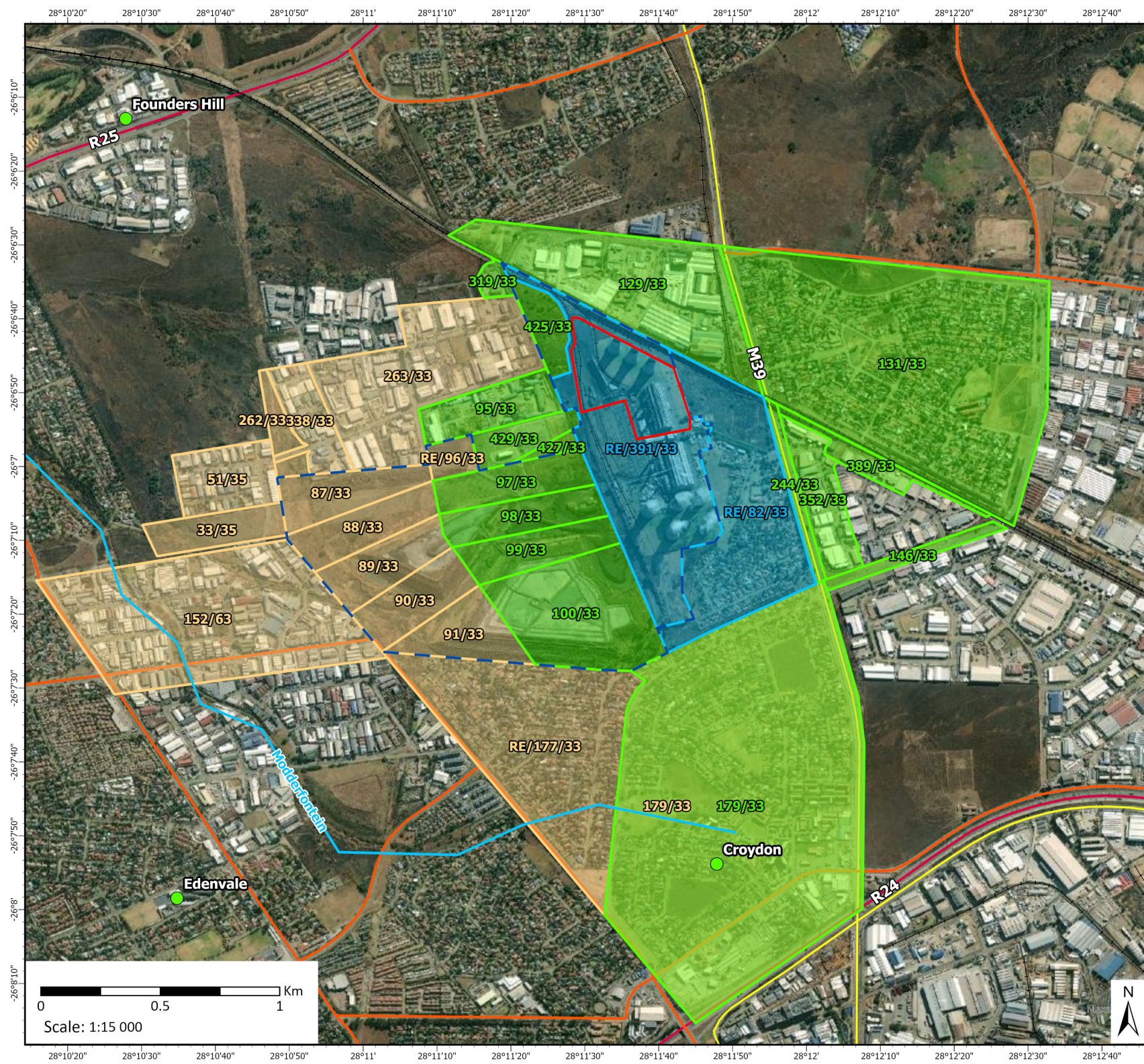
- Gauteng Conservation Plan**
- CBA
 - ESA



Data Sources:
 CSG; ESRI
 Coord System: GCS WGS 1984
 Datum: WGS 1984
 Units: Degree
 Ref: 1607_LN3

Date: 2024/03/08
 EIMS Ref: 1607
 Compiled: JW
 Reviewed: JP
 Approved: LW










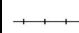





Properties Map

1607 Kelvin Power Station CCGT EIA WULA

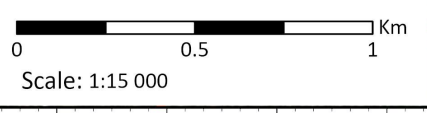
Legend

-  Kelvin Power Station Boundary
 -  Proposed Kelvin CCGT Power Plant
 -  Directly Affected Farm Portions
 -  Adjacent Farm Portions
 -  Farm Portion
 -  Places
- #### Roads
-  Arterial Route
 -  Secondary Road
 -  Main Road
 -  Railway
 -  NFEPA Rivers



Data Sources:
 CSG; ESRI; SANBI
 Coord System: GCS WGS 1984
 Datum: WGS 1984
 Units: Degree
 Ref: 1607_PropertyMap

Date: 2024/03/08
 EIMS Ref: 1607
 Compiled: JW
 Reviewed: JP
 Approved: LW



Site Sensitivity Map

1607 Kelvin Power Station CCGT EIA WULA

Legend

- Proposed Kelvin CCGT Power Plant
- Places
- NFEPA Wetlands
- NFEPA Rivers
- SAPAD
- Gauteng Conservation Plan
 - CBA
 - ESA
- Land Capability Class
 - 8
 - 9
 - 10
 - 11
 - 12
 - 13
 - 14



Data Sources:

CSG; ESRI; GDARDE
Coord System: GCS WGS 1984
Datum: WGS 1984
Units: Degree
Ref: 1607_SiteSensitivity

Date: 2024/03/05
EIMS Ref: 1607
Compiled: JW
Reviewed: JP
Approved: LW

