









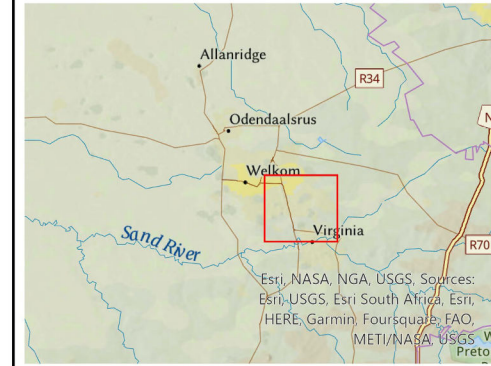


## Locality Map

1599 Harmony Brand A TSF EIA and WULA

### Legend

-  Arterial Roads
-  Secondary Roads
-  Other Roads
-  Rivers
-  NFEPA Wetlands
-  Towns
-  Brand A TSF
-  Brand Return Water Dam
- Brand A Deposition lines**
-  Central to Brand A
-  One Plant to Brand A
-  Saaiplaas to Brand A - Alternative 1
-  Saaiplaas to Brand A - Alternative 2

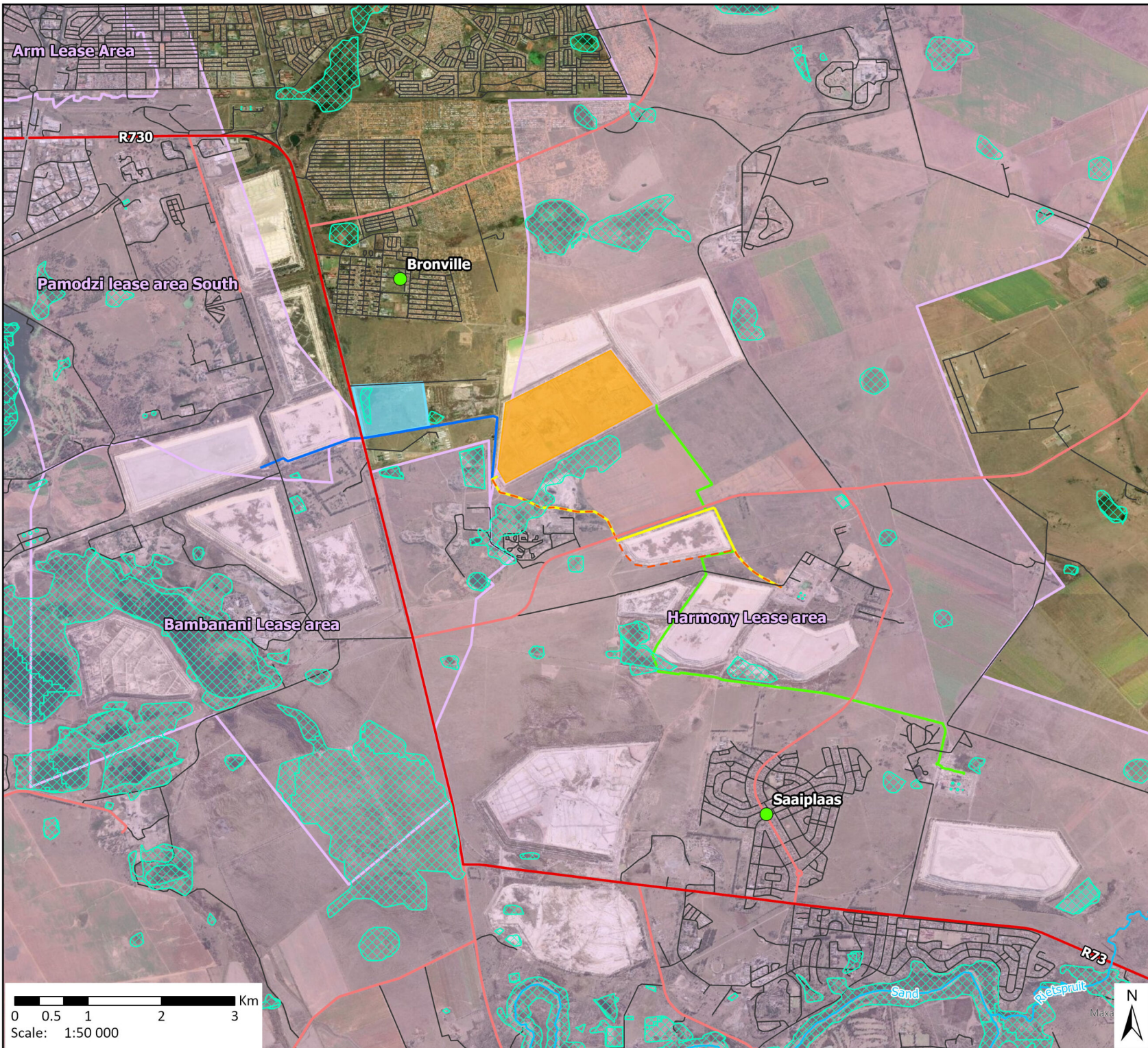


Data Sources:  
 CSG; ESRI  
 Coord System: GCS WGS 1984  
 Datum: WGS 1984  
 Units: Degree  
 Ref: 1599\_Locality

Date: 2023/10/26  
 EIMS Ref: 1599  
 Compiled: JW  
 Reviewed: JP  
 Approved: LW







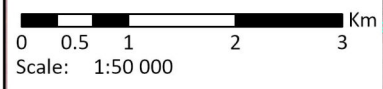
## Locality Map

1599 Harmony Brand A TSF EIA and WULA

- Legend**
- Arterial Roads
  - Secondary Roads
  - Other Roads
  - Rivers
  - NFEPA Wetlands
  - Towns
  - Mining Right Boundary
  - Brand A TSF
  - Brand Return Water Dam
- Brand A Deposition lines**
- Central to Brand A
  - One Plant to Brand A
  - Saaiplaas to Brand A -Alternative 1
  - Saaiplaas to Brand A -Alternative 2



**Data Sources:**  
 CSG; ESRI  
 Coord System: GCS WGS 1984  
 Datum: WGS 1984  
 Units: Degree  
 Ref: 1599\_Locality



Date: 2023/10/26  
 EIMS Ref: 1599  
 Compiled: JW  
 Reviewed: JP  
 Approved: LW
















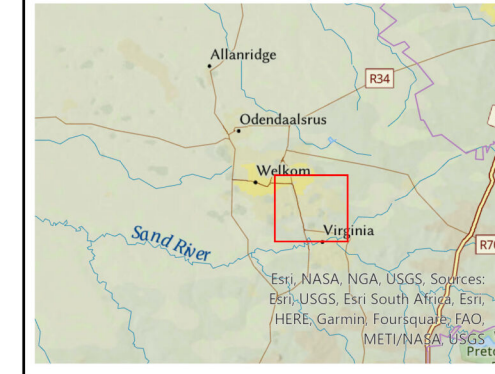


# Properties Map

1599 Harmony Brand A TSF EIA and WULA

## Legend

-  Arterial Roads
-  Secondary Roads
-  Other Roads
-  Rivers
-  Towns
-  Brand A TSF
-  Brand Return Water Dam
- Brand A Deposition lines**
-  Central to Brand A
-  One Plant to Brand A
-  Saaiplaas to Brand A -Alternative 1
-  Saaiplaas to Brand A -Alternative 2
-  Directly Affected Farm Portions
-  Adjacent Farm Portions



Data Sources:  
 CSG; ESRI  
 Coord System: GCS WGS 1984  
 Datum: WGS 1984  
 Units: Degree  
 Ref: 1599\_Properties

Date: 2023/10/13  
 EIMS Ref: 1599  
 Compiled: JW  
 Reviewed: JP  
 Approved: LW

