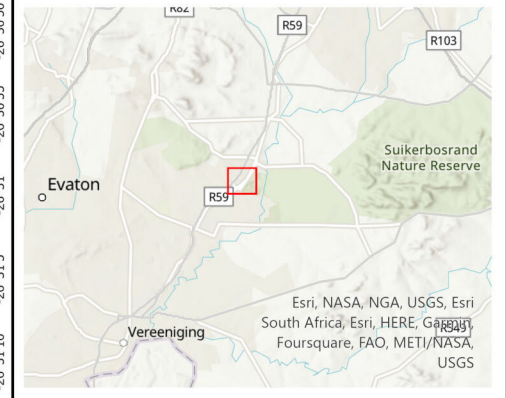


### Locality Map

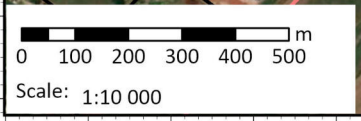
1585 Development of chemical production facility EIA

### Legend

- Site boundary
- Places
- └─┘ Arterial Road
- └─┘ Local Road
- └─┘ Secondary Road



Data Sources:  
 CSG; ESRI  
 Coord System: GCS WGS 1984  
 Datum: WGS 1984  
 Units: Degree  
 Ref: 1585 Eco Partners NuVest EIA



Date: 2023/08/25  
 EIMS Ref: 1585  
 Compiled: JW  
 Reviewed: JJ  
 Approved: LW





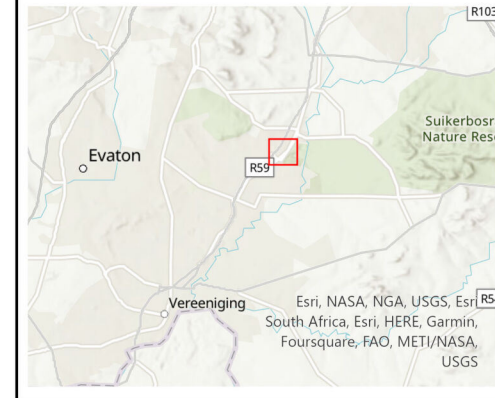


## Properties Map

1585 Eco Partners NuVest EIA

### Legend

-  Site boundary
-  Adjacent Farm Portions
-  Adjacent Holdings
-  Places
-  Arterial Road
-  Local Road
-  Secondary Road



Data Sources:  
 CSG; ESRI  
 Coord System: GCS WGS 1984  
 Datum: WGS 1984  
 Units: Degree  
 Ref: 1585 Eco Partners NuVest EIA

Date: 2023/08/30  
 EIMS Ref: 1585  
 Compiled: JW  
 Reviewed: LW  
 Approved: LW





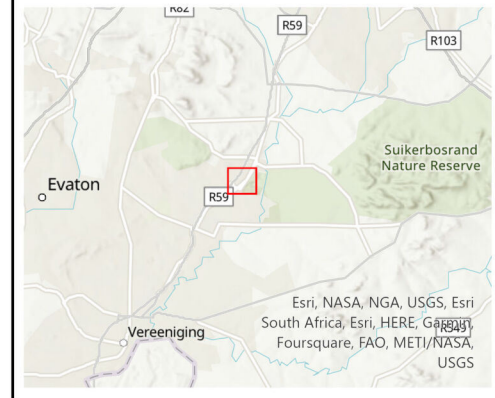


### Topography

1585 Eco Partners NuVest EIA

#### Legend

- Site boundary
- Places
- Arterial Road
- Local Road
- Secondary Road
- Contour Line (20m)



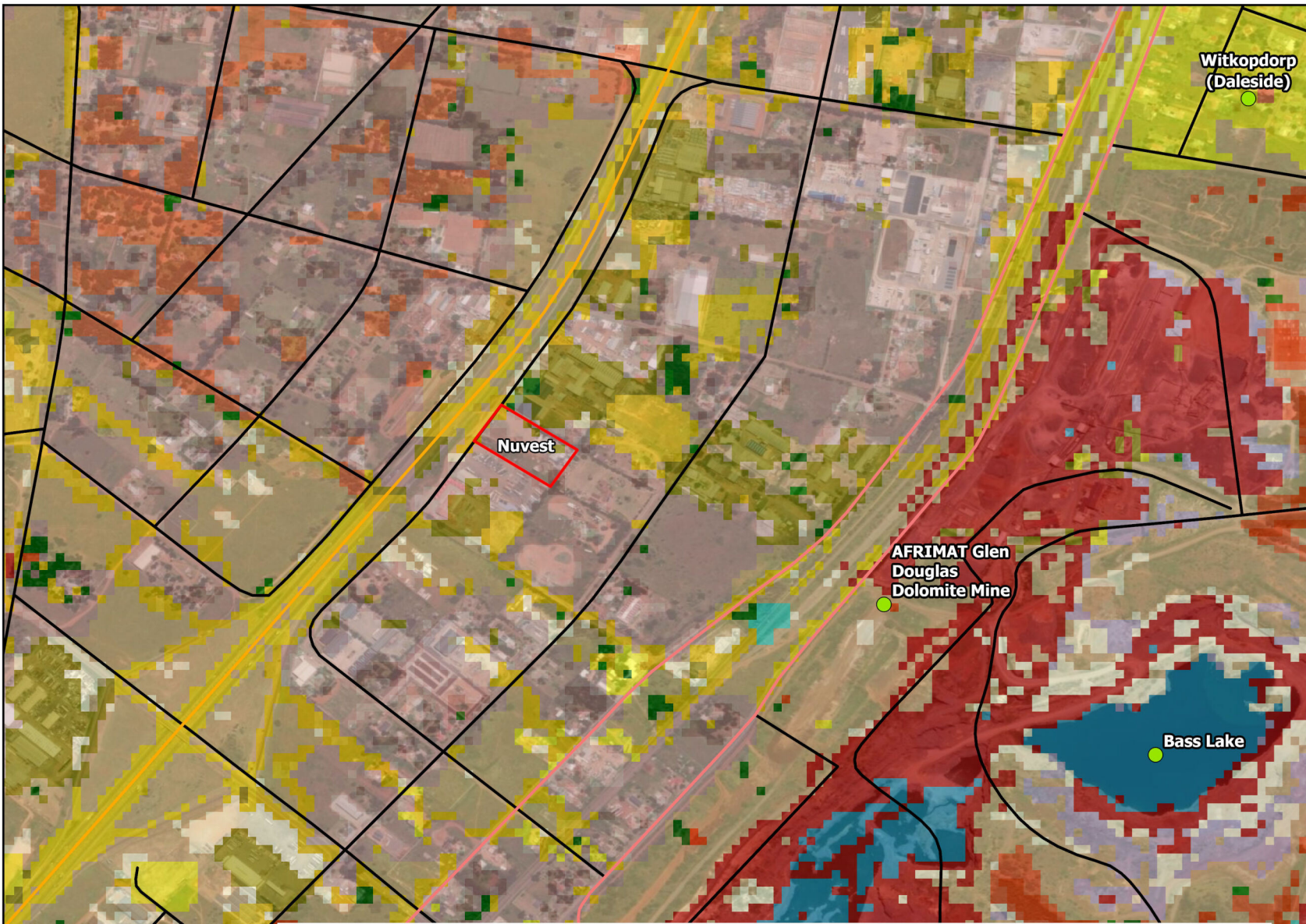
Data Sources:  
 CSG; ESRI  
 Coord System: GCS WGS 1984  
 Datum: WGS 1984  
 Units: Degree  
 Ref: 1585 Eco Partners NuVest EIA

Date: 2023/08/01  
 EIMS Ref: 1585  
 Compiled: JW  
 Reviewed: LW  
 Approved: LW



Esri, Maxar, Earthstar Geographics, and the GIS User Community





## Land Cover

1585 Eco Partners NuVest EIA

### Legend

- Site boundary
- Places
- Arterial Road
- Local Road
- Secondary Road



Scale: 1:10 000

### Legend

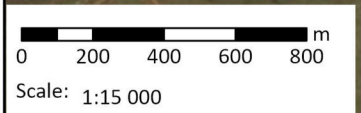
<p><b>Land Cover</b></p> <ul style="list-style-type: none"> <li><span style="display: inline-block; width: 10px; height: 10px; background-color: #2e8b57; margin-right: 5px;"></span> contiguous low forest &amp; thicket</li> <li><span style="display: inline-block; width: 10px; height: 10px; background-color: #2e8b57; margin-right: 5px;"></span> dense forest &amp; woodland</li> <li><span style="display: inline-block; width: 10px; height: 10px; background-color: #2e8b57; margin-right: 5px;"></span> open woodland</li> <li><span style="display: inline-block; width: 10px; height: 10px; background-color: #2e8b57; margin-right: 5px;"></span> contiguous &amp; dense plantation forest</li> <li><span style="display: inline-block; width: 10px; height: 10px; background-color: #2e8b57; margin-right: 5px;"></span> open &amp; sparse plantation forest</li> </ul>	<ul style="list-style-type: none"> <li><span style="display: inline-block; width: 10px; height: 10px; background-color: #ff7f50; margin-right: 5px;"></span> temporary unplanted (clear-felled) plantation forest</li> <li><span style="display: inline-block; width: 10px; height: 10px; background-color: #9370db; margin-right: 5px;"></span> low shrubland (other)</li> <li><span style="display: inline-block; width: 10px; height: 10px; background-color: #d2b48c; margin-right: 5px;"></span> natural grassland</li> <li><span style="display: inline-block; width: 10px; height: 10px; background-color: #4682b4; margin-right: 5px;"></span> artificial flooded mine pits</li> <li><span style="display: inline-block; width: 10px; height: 10px; background-color: #40e0d0; margin-right: 5px;"></span> herbaceous wetlands (currently mapped)</li> </ul>	<ul style="list-style-type: none"> <li><span style="display: inline-block; width: 10px; height: 10px; background-color: #add8e6; margin-right: 5px;"></span> herbaceous wetlands (previously mapped)</li> <li><span style="display: inline-block; width: 10px; height: 10px; background-color: #fffacd; margin-right: 5px;"></span> natural rock surfaces</li> <li><span style="display: inline-block; width: 10px; height: 10px; background-color: #f5deb3; margin-right: 5px;"></span> dry pans</li> <li><span style="display: inline-block; width: 10px; height: 10px; background-color: #fff2cc; margin-right: 5px;"></span> other bare</li> <li><span style="display: inline-block; width: 10px; height: 10px; background-color: #ffff00; margin-right: 5px;"></span> residential formal (tree)</li> <li><span style="display: inline-block; width: 10px; height: 10px; background-color: #ffff00; margin-right: 5px;"></span> residential formal (bush)</li> </ul>	<ul style="list-style-type: none"> <li><span style="display: inline-block; width: 10px; height: 10px; background-color: #ffff00; margin-right: 5px;"></span> residential formal (low veg / grass)</li> <li><span style="display: inline-block; width: 10px; height: 10px; background-color: #ffff00; margin-right: 5px;"></span> residential formal (bare)</li> <li><span style="display: inline-block; width: 10px; height: 10px; background-color: #ffff00; margin-right: 5px;"></span> village scattered (bare &amp; low veg/ grass combo)</li> <li><span style="display: inline-block; width: 10px; height: 10px; background-color: #ffff00; margin-right: 5px;"></span> village dense (bare &amp; low veg / grass combo)</li> <li><span style="display: inline-block; width: 10px; height: 10px; background-color: #808080; margin-right: 5px;"></span> smallholdings (tree)</li> </ul>	<ul style="list-style-type: none"> <li><span style="display: inline-block; width: 10px; height: 10px; background-color: #808080; margin-right: 5px;"></span> smallholdings (bush)</li> <li><span style="display: inline-block; width: 10px; height: 10px; background-color: #808080; margin-right: 5px;"></span> smallholdings (low veg / grass)</li> <li><span style="display: inline-block; width: 10px; height: 10px; background-color: #808080; margin-right: 5px;"></span> smallholdings (bare)</li> <li><span style="display: inline-block; width: 10px; height: 10px; background-color: #d2b48c; margin-right: 5px;"></span> commercial</li> <li><span style="display: inline-block; width: 10px; height: 10px; background-color: #808080; margin-right: 5px;"></span> industrial</li> <li><span style="display: inline-block; width: 10px; height: 10px; background-color: #ffff00; margin-right: 5px;"></span> roads &amp; rails (major linear)</li> <li><span style="display: inline-block; width: 10px; height: 10px; background-color: #800000; margin-right: 5px;"></span> mines: extraction pits, quarries</li> </ul>
---	--	--	--	---

Data Sources:  
 CSG; ESRI  
 Coord System: GCS WGS 1984  
 Datum: WGS 1984  
 Units: Degree  
 Ref: 1585 Eco Partners NuVest EIA

Date: 2023/08/01  
 EIMS Ref: 1585  
 Compiled: JW  
 Reviewed: LW  
 Approved: LW



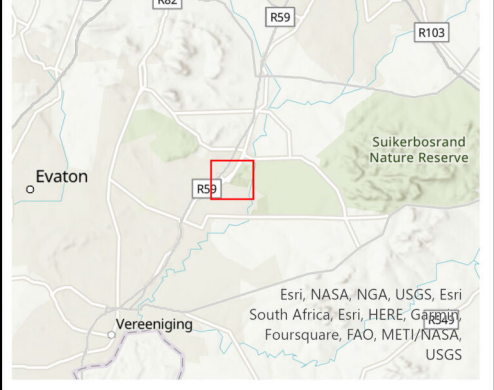




## Hydrology Map

1585 Eco Partners NuVest EIA

- Legend**
- Site boundary
  - 100m Buffer
  - 500m Buffer
  - Places
  - └─┘ Arterial Road
  - └─┘ Local Road
  - └─┘ Secondary Road
  - ~ Rivers
- NFEPA Wetlands**
- Artificial: Flat
  - Natural: Channelled valley-bottom wetland
  - Natural: Unchannelled valley-bottom wetland

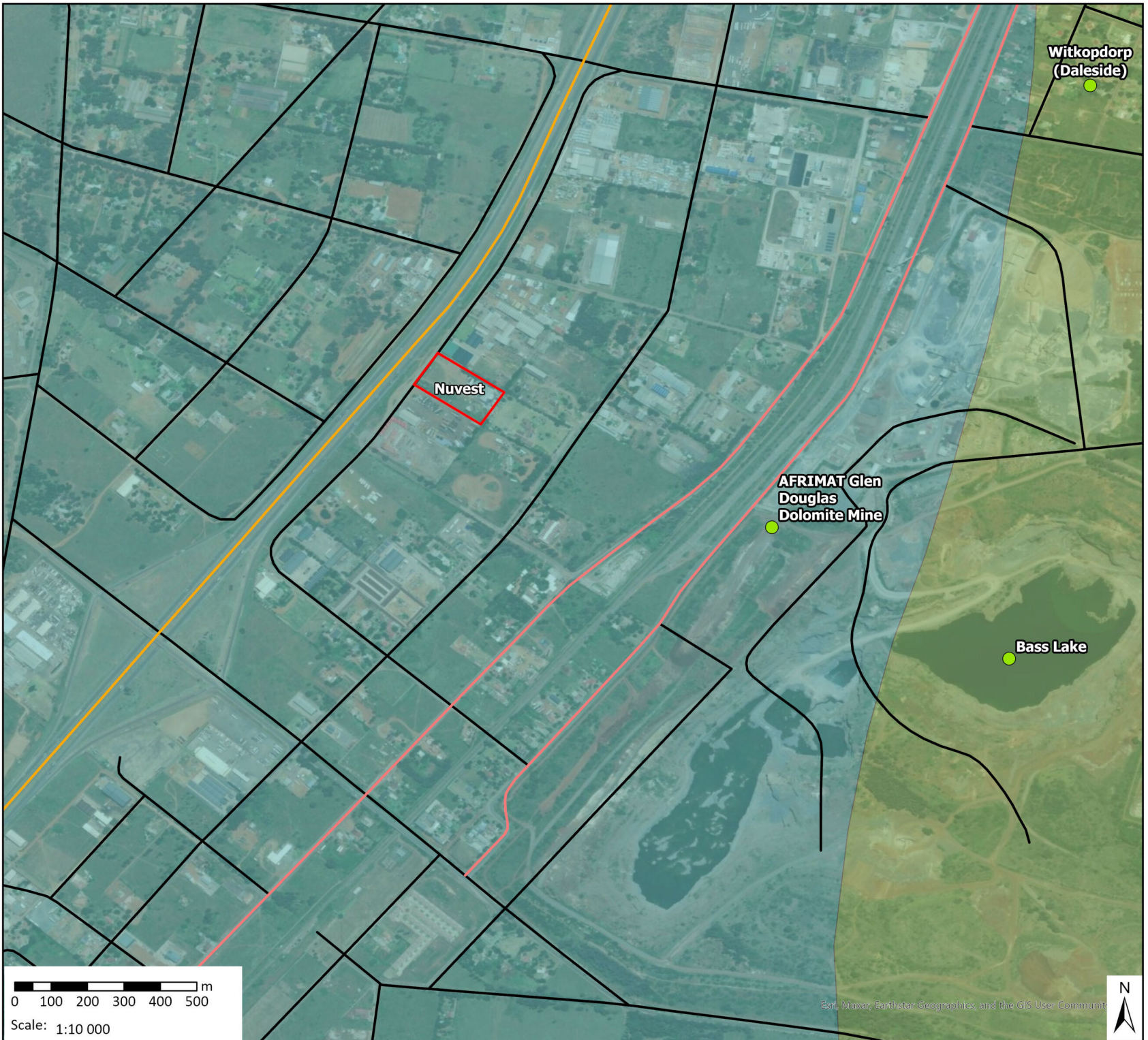


**Data Sources:**  
 CSG; ESRI  
 Coord System: GCS WGS 1984  
 Datum: WGS 1984  
 Units: Degree  
 Ref: 1585\_Hydrology

Date: 2023/08/21  
 EIMS Ref: 1585  
 Compiled: JW  
 Reviewed: VM  
 Approved: LW







**Vegetation Status**

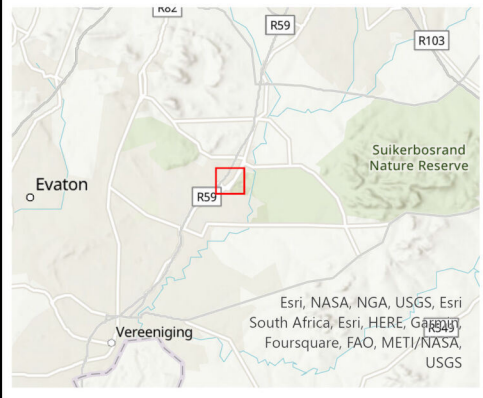
1585 Eco Partners NuVest EIA

**Legend**

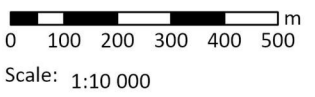
- Site boundary
- Places
- Arterial Road
- Local Road
- Secondary Road

**Vegetation Status**

- Carletonville Dolomite Grassland  
 Conservation Target: 24%  
 Protection Level: Poorly Protected  
 Ecosystem Threat Status: Least Concern
- Soweto Highveld Grassland  
 Conservation Target: 24%  
 Protection Level: Not Protected  
 Ecosystem Threat Status: Vulnerable



**Data Sources:**  
 CSG; ESRI  
 Coord System: GCS WGS 1984  
 Datum: WGS 1984  
 Units: Degree  
 Ref: 1585 Eco Partners NuVest EIA

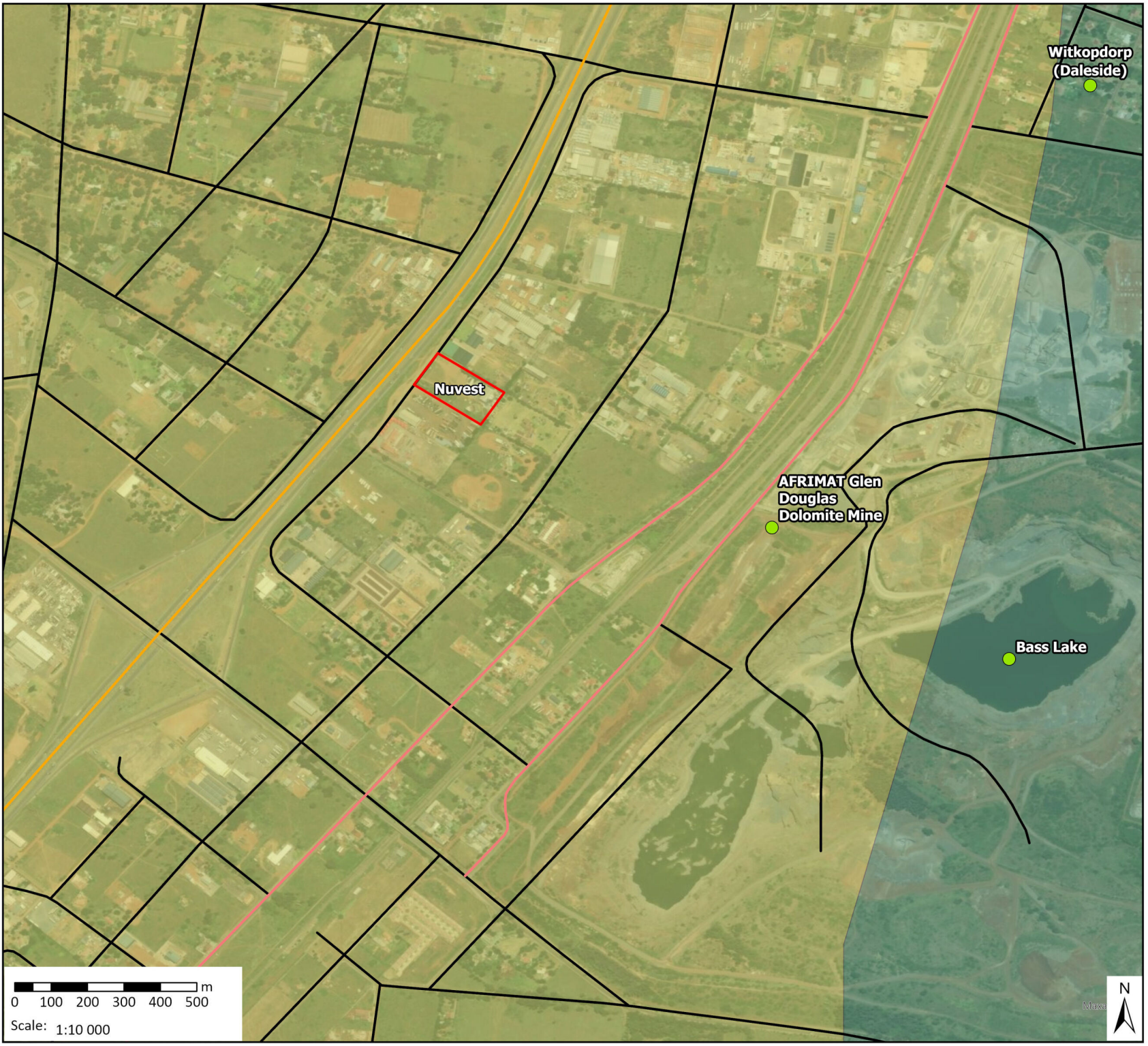


Esri, Maxar, Earthstar Geographics, and the GIS User Community

Date: 2023/08/01  
 EIMS Ref: 1585  
 Compiled: JW  
 Reviewed: LW  
 Approved: LW







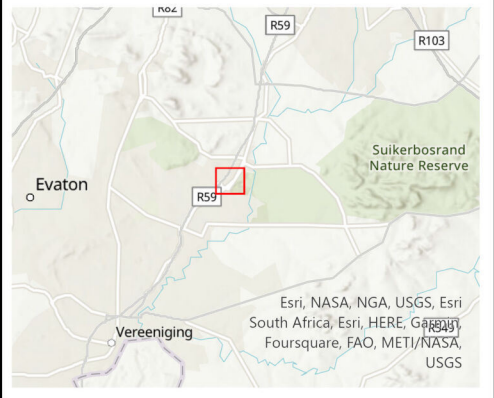
## Soils

1585 Eco Partners NuVest EIA

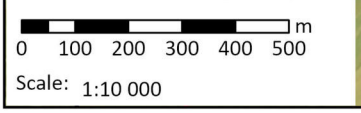
### Legend

- Site boundary
- Places
- Arterial Road
- Local Road
- Secondary Road

- ### Soils
- Red and yellow, massive or weakly structured soils with low to medium base status (association of well drained Ferralsols, Acrisols and Lixisols)
  - Red, yellow and greyish soils with low to medium base status (association of Ferralsols, Acrisols, Lixisols and Plinthosols. In addition, other soils with plinthic and gleyic properties may also be present)



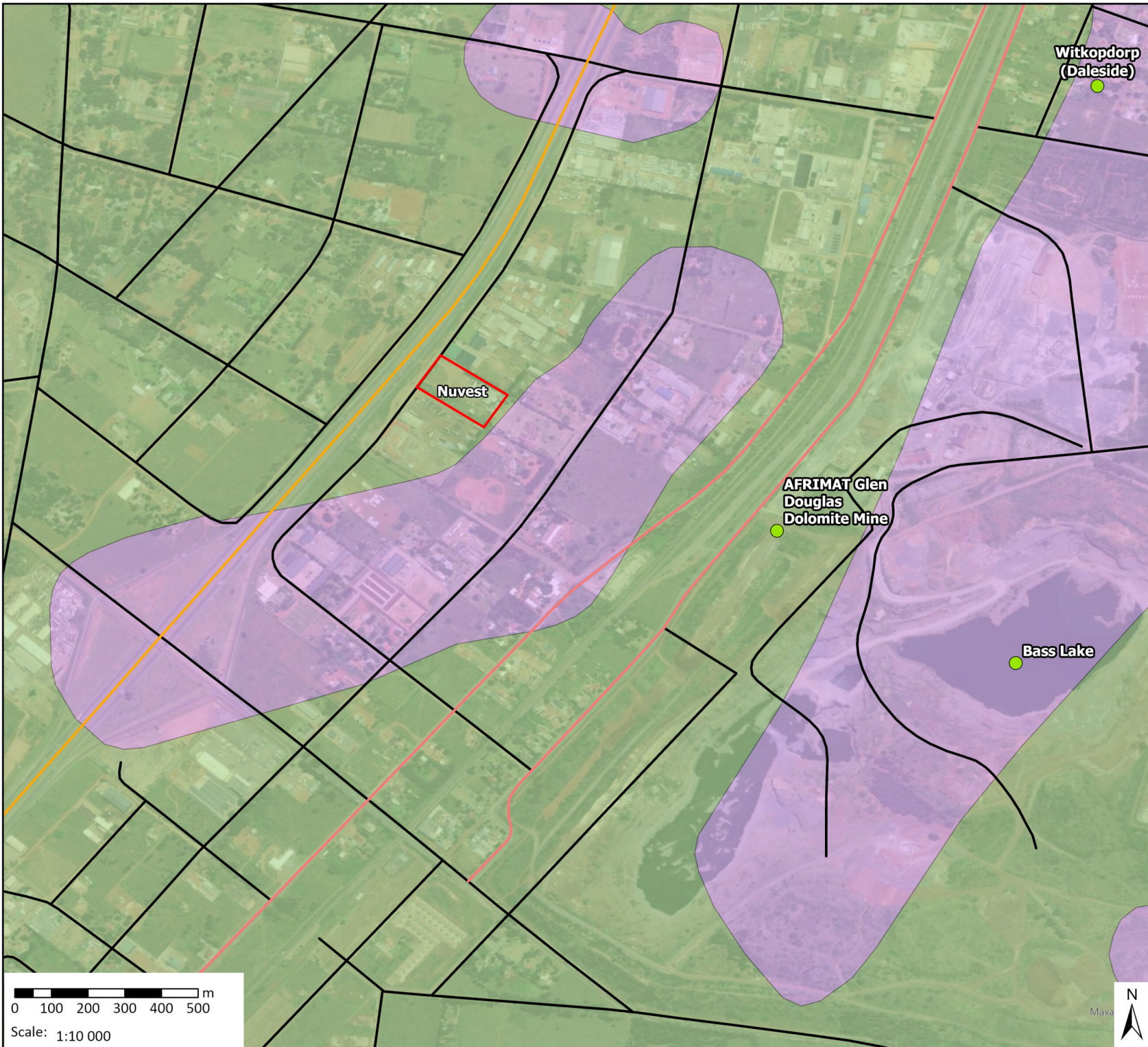
Data Sources:  
 CSG; ESRI  
 Coord System: GCS WGS 1984  
 Datum: WGS 1984  
 Units: Degree  
 Ref: 1585 Eco Partners NuVest EIA



Date: 2023/08/01  
 EIMS Ref: 1585  
 Compiled: JW  
 Reviewed: LW  
 Approved: LW












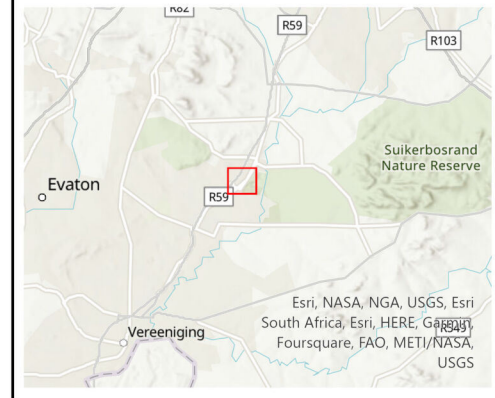


## Simplified Geology

1585 Eco Partners NuVest EIA

### Legend

-  Site boundary
-  Places
-  Arterial Road
-  Local Road
-  Secondary Road
- Geology Sub-group**
-  Malmani
-  Vryheid



Data Sources:  
 CSG; ESRI  
 Coord System: GCS WGS 1984  
 Datum: WGS 1984  
 Units: Degree  
 Ref: 1585 Eco Partners NuVest EIA

Date: 2023/08/01  
 EIMS Ref: 1585  
 Compiled: JW  
 Reviewed: LW  
 Approved: LW



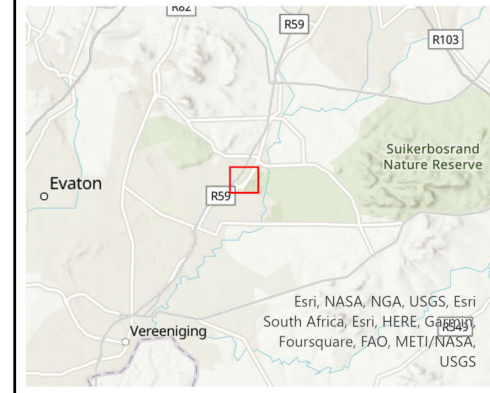


# Gauteng Province Environmental Management Framework

1585 Eco Partners NuVest EIA

## Legend

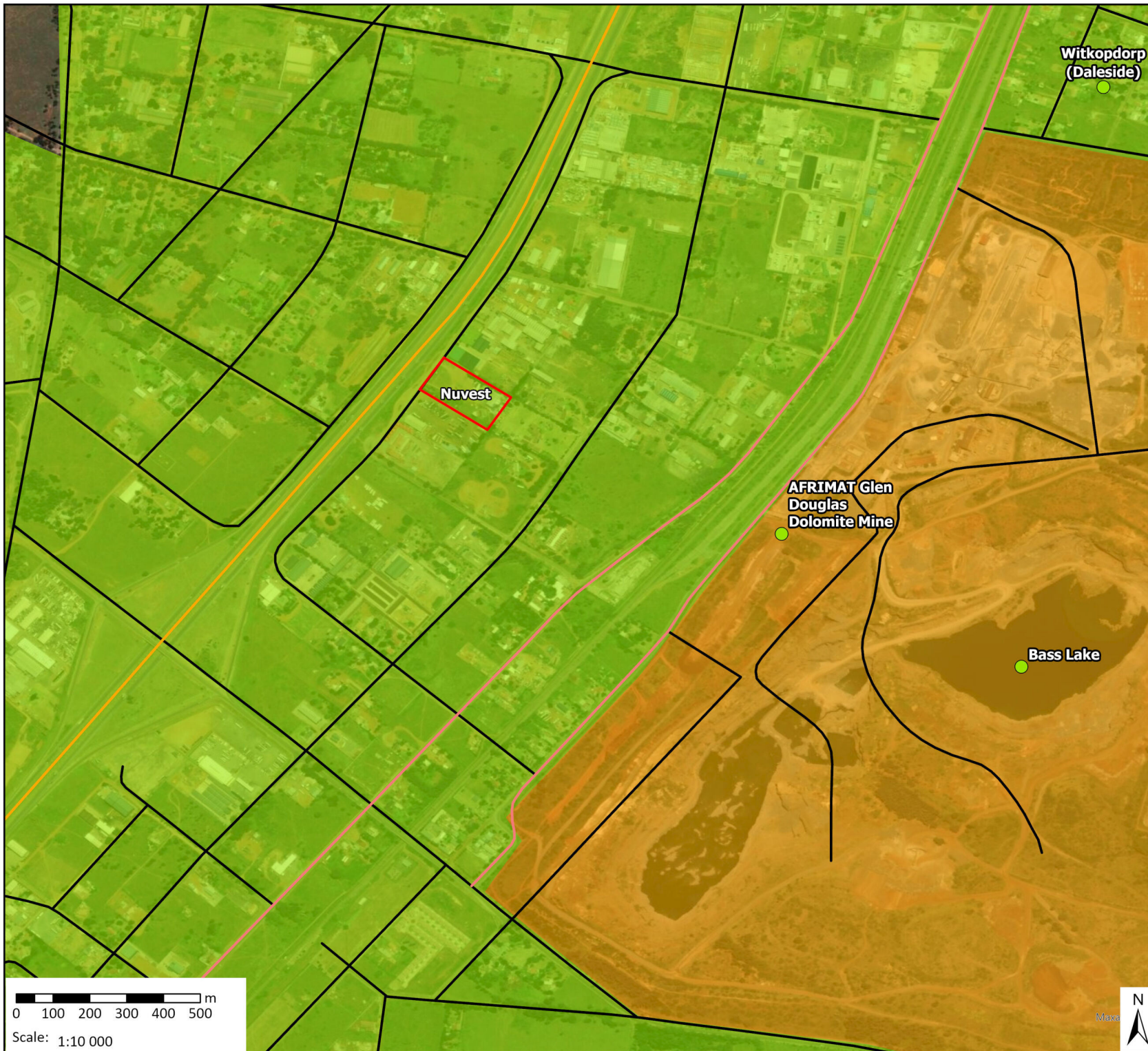
-  Site boundary
-  Places
-  Arterial Road
-  Local Road
-  Secondary Road
-  Zone 1 - Urban Development Zone
-  Zone 5 - Industrial and large commercial focus zone



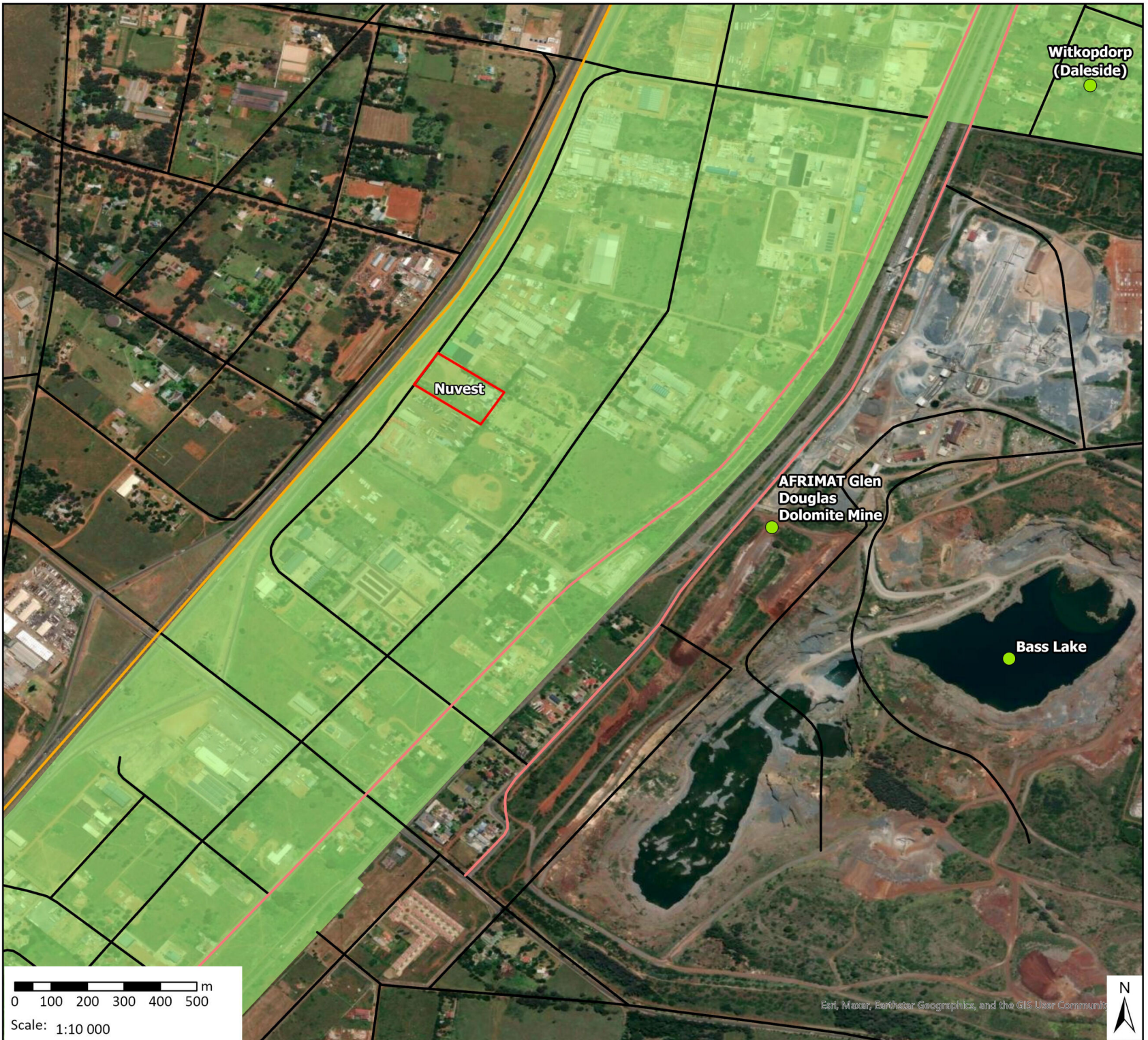
## Data Sources:

CSG; ESRI  
Coord System: GCS WGS 1984  
Datum: WGS 1984  
Units: Degree  
Ref: 1585\_GPEMF

Date: 2023/08/21  
EIMS Ref: 1585  
Compiled: JW  
Reviewed: VM  
Approved: LW



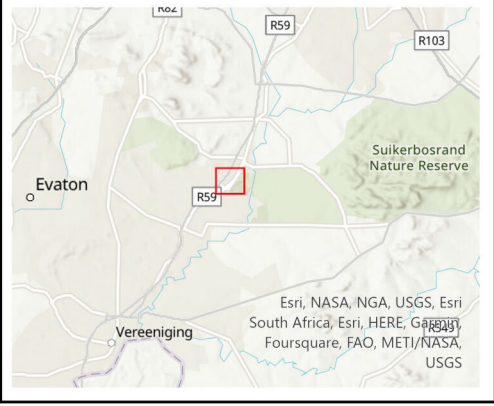




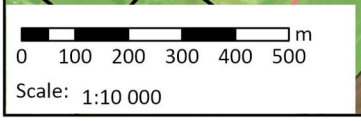
## Urban Edge Map

1585 Eco Partners NuVest EIA

- Legend**
- Site boundary
  - Places
  - Arterial Road
  - Local Road
  - Secondary Road
  - Inside Urban Edge



**Data Sources:**  
 CSG; ESRI  
 Coord System: GCS WGS 1984  
 Datum: WGS 1984  
 Units: Degree  
 Ref: 1585\_Urban Edge



Date: 2023/08/21  
 EIMS Ref: 1585  
 Compiled: JW  
 Reviewed: VM  
 Approved: LW







### Listing Notice 3 Applicability

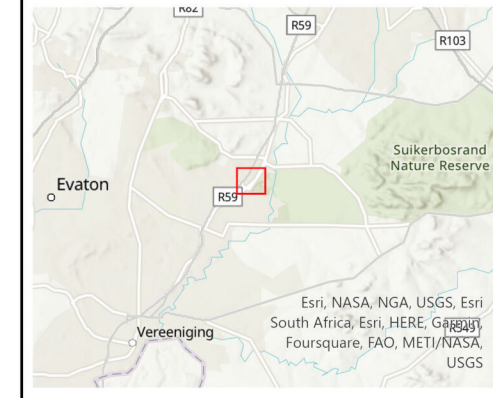
1585 Eco Partners NuVest EIA

#### Legend

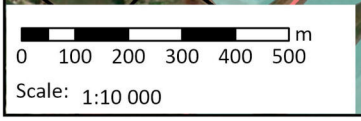
- Site boundary
- Places
- └─┘ Arterial Road
- └─┘ Local Road
- └─┘ Secondary Road

#### Gauteng Conservation Plan

- █ CBA



Data Sources:  
 CSG; ESRI  
 Coord System: GCS WGS 1984  
 Datum: WGS 1984  
 Units: Degree  
 Ref: 1585 Eco Partners NuVest EIA



Esri, Maxar, Earthstar Geographics, and the GIS User Community

Date: 2023/08/01  
 EIMS Ref: 1585  
 Compiled: JW  
 Reviewed: LW  
 Approved: LW

