

**SCREENING REPORT FOR AN ENVIRONMENTAL AUTHORIZATION AS
REQUIRED BY THE 2014 EIA REGULATIONS – PROPOSED SITE
ENVIRONMENTAL SENSITIVITY**

EIA Reference number: N/A

Project name: 1577 EcoPartners Sibanye WTLR Plant BA

Project title: 1577 EcoPartners Sibanye WTLR Plant BA

Date screening report generated: 07/06/2023 09:19:07

Applicant: Sibanye Rustenburg Platinum Mine (Pty) Ltd

Compiler: EIMS

Compiler signature:
.....

Application Category: Utilities Infrastructure|Pipelines|Water|Waste Water

Table of Contents

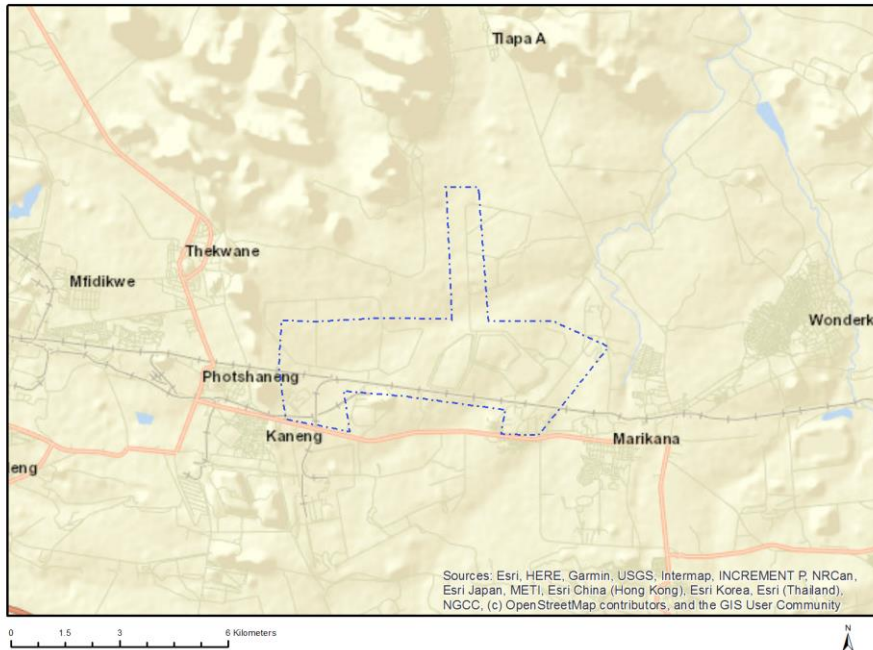
Proposed Project Location	3
Orientation map 1: General location	3
Map of proposed site and relevant area(s)	4
Cadastral details of the proposed site	4
Wind and Solar developments with an approved Environmental Authorisation or applications under consideration within 30 km of the proposed area	6
Environmental Management Frameworks relevant to the application	6
Environmental screening results and assessment outcomes	6
Relevant development incentives, restrictions, exclusions or prohibitions	6
Proposed Development Area Environmental Sensitivity	6
Specialist assessments identified	7
Results of the environmental sensitivity of the proposed area	9
MAP OF RELATIVE AGRICULTURE THEME SENSITIVITY	9
MAP OF RELATIVE ANIMAL SPECIES THEME SENSITIVITY	10
MAP OF RELATIVE AQUATIC BIODIVERSITY THEME SENSITIVITY	11
MAP OF RELATIVE ARCHAEOLOGICAL AND CULTURAL HERITAGE THEME SENSITIVITY	12
MAP OF RELATIVE CIVIL AVIATION THEME SENSITIVITY	13
MAP OF RELATIVE DEFENCE THEME SENSITIVITY	14
MAP OF RELATIVE PALEONTOLOGY THEME SENSITIVITY	15
MAP OF RELATIVE PLANT SPECIES THEME SENSITIVITY	16
MAP OF RELATIVE TERRESTRIAL BIODIVERSITY THEME SENSITIVITY	17

Proposed Project Location

Orientation map 1: General location



Map of proposed site and relevant area(s)



Cadastral details of the proposed site

Property details:

No	Farm Name	Farm/ Erf No	Portion	Latitude	Longitude	Property Type
1	KLIPFONTEIN	300	0	25°41'52.83S	27°22'43.2E	Farm
2	ROOIKOPPIES	297	0	25°41'46.71S	27°28'19.52E	Farm
3	BRAKSPRUIT	299	0	25°42'13.01S	27°24'53.09E	Farm
4	ZWARTKOPPIES	296	0	25°39'3.97S	27°27'53.97E	Farm
5	HOEDSPRUIT	298	0	25°39'33.91S	27°25'17.83E	Farm
6	LONMIN TAILINGS	943	0	25°40'46.23S	27°26'4.58E	Farm
7	ANGLO TAILINGS	942	0	25°40'43.12S	27°25'34.78E	Farm
8	ZWARTKOPPIES	296	22	25°39'51.45S	27°27'47.2E	Farm Portion
9	ZWARTKOPPIES	296	40	25°39'46.62S	27°27'34.23E	Farm Portion
10	ROOIKOPPIES	297	157	25°40'45.41S	27°28'23.77E	Farm Portion
11	ROOIKOPPIES	297	158	25°40'44.48S	27°27'48.99E	Farm Portion
12	ROOIKOPPIES	297	227	25°40'47.69S	27°27'24.42E	Farm Portion
13	ROOIKOPPIES	297	223	25°41'12.08S	27°27'8.15E	Farm Portion
14	ROOIKOPPIES	297	44	25°40'30.59S	27°28'11.79E	Farm Portion
15	ROOIKOPPIES	297	156	25°40'41.73S	27°27'47.49E	Farm Portion
16	ROOIKOPPIES	297	167	25°41'1.16S	27°28'12.99E	Farm Portion
17	ROOIKOPPIES	297	278	25°41'33S	27°27'24.34E	Farm Portion
18	ROOIKOPPIES	297	226	25°41'1.12S	27°27'9.8E	Farm Portion
19	ROOIKOPPIES	297	225	25°40'49.11S	27°27'7.81E	Farm Portion
20	ROOIKOPPIES	297	37	25°40'33.75S	27°28'37.44E	Farm Portion
21	ROOIKOPPIES	297	114	25°40'42.05S	27°26'24.13E	Farm Portion
22	HOEDSPRUIT	298	15	25°38'45.87S	27°26'1.47E	Farm Portion
23	HOEDSPRUIT	298	12	25°39'10.17S	27°26'2.74E	Farm Portion
24	ROOIKOPPIES	297	222	25°40'24.12S	27°28'8.58E	Farm Portion
25	ROOIKOPPIES	297	163	25°40'53.93S	27°28'14.02E	Farm Portion
26	ROOIKOPPIES	297	224	25°40'54.19S	27°26'49.04E	Farm Portion

27	ROOIKOPPIES	297	276	25°41'21.48S	27°27'4.11E	Farm Portion
28	ROOIKOPPIES	297	219	25°40'46.29S	27°26'32.65E	Farm Portion
29	ROOIKOPPIES	297	165	25°40'59.33S	27°28'13.78E	Farm Portion
30	ROOIKOPPIES	297	169	25°41'4.39S	27°28'13.67E	Farm Portion
31	ROOIKOPPIES	297	123	25°40'55.91S	27°27'35.76E	Farm Portion
32	ROOIKOPPIES	297	218	25°40'47.86S	27°26'37.46E	Farm Portion
33	ROOIKOPPIES	297	220	25°40'44.75S	27°26'28.11E	Farm Portion
34	HOEDSPRUIT	298	14	25°38'16.95S	27°25'59.97E	Farm Portion
35	HOEDSPRUIT	298	3	25°39'10.72S	27°25'44.34E	Farm Portion
36	HOEDSPRUIT	298	13	25°39'36.54S	27°26'4.04E	Farm Portion
37	HOEDSPRUIT	298	19	25°40'45.18S	27°24'22.06E	Farm Portion
38	LONMIN TAILINGS	943	0	25°40'40.64S	27°26'4.38E	Farm Portion
39	ZWARTKOPPIES	296	56	25°38'38.03S	27°27'26.09E	Farm Portion
40	ROOIKOPPIES	297	42	25°40'38.09S	27°28'12.22E	Farm Portion
41	ROOIKOPPIES	297	152	25°40'21.62S	27°28'10.01E	Farm Portion
42	ROOIKOPPIES	297	189	25°40'34.98S	27°27'7.81E	Farm Portion
43	ROOIKOPPIES	297	228	25°40'42.74S	27°27'17.51E	Farm Portion
44	HOEDSPRUIT	298	8	25°40'8.79S	27°25'25.86E	Farm Portion
45	KLIPFONTEIN	300	2	25°41'45.73S	27°22'42.76E	Farm Portion
46	ANGLO TAILINGS	942	0	25°40'37.53S	27°25'34.58E	Farm Portion
47	ZWARTKOPPIES	296	102	25°39'20.51S	27°27'9.6E	Farm Portion
48	ZWARTKOPPIES	296	68	25°40'3.34S	27°26'50.29E	Farm Portion
49	ROOIKOPPIES	297	155	25°40'37.77S	27°27'46.56E	Farm Portion
50	ROOIKOPPIES	297	153	25°40'27.57S	27°27'42.1E	Farm Portion
51	ROOIKOPPIES	297	161	25°40'50.21S	27°28'5.71E	Farm Portion
52	ROOIKOPPIES	297	168	25°41'2.78S	27°28'13.1E	Farm Portion
53	ROOIKOPPIES	297	185	25°40'22.64S	27°26'52.15E	Farm Portion
54	ROOIKOPPIES	297	370	25°41'17.2S	27°26'59.41E	Farm Portion
55	ROOIKOPPIES	297	277	25°41'23.86S	27°26'42.32E	Farm Portion
56	HOEDSPRUIT	298	2	25°40'2.77S	27°26'5.33E	Farm Portion
57	BRAKSPRUIT	299	23	25°41'25.24S	27°24'56.21E	Farm Portion
58	ROOIKOPPIES	297	116	25°41'12.77S	27°27'43.67E	Farm Portion
59	ROOIKOPPIES	297	171	25°41'4.78S	27°27'53.57E	Farm Portion
60	ROOIKOPPIES	297	150	25°40'17.25S	27°27'24.77E	Farm Portion
61	ROOIKOPPIES	297	279	25°41'29.5S	27°26'41.98E	Farm Portion
62	HOEDSPRUIT	298	17	25°38'54.76S	27°26'1.93E	Farm Portion
63	ZWARTKOPPIES	296	106	25°39'3.91S	27°27'6.97E	Farm Portion
64	ZWARTKOPPIES	296	116	25°39'36.86S	27°27'17.22E	Farm Portion
65	ROOIKOPPIES	297	154	25°40'32.2S	27°27'36.68E	Farm Portion
66	ROOIKOPPIES	297	151	25°40'22.1S	27°27'29.56E	Farm Portion
67	ROOIKOPPIES	297	160	25°40'48.8S	27°28'13.64E	Farm Portion
68	ROOIKOPPIES	297	368	25°41'24.26S	27°27'58.49E	Farm Portion
69	ROOIKOPPIES	297	170	25°41'7.47S	27°28'17.13E	Farm Portion
70	ROOIKOPPIES	297	280	25°41'39.66S	27°26'56.62E	Farm Portion
71	ROOIKOPPIES	297	217	25°40'49.68S	27°26'42.52E	Farm Portion
72	HOEDSPRUIT	298	11	25°38'37.05S	27°26'1.07E	Farm Portion
73	HOEDSPRUIT	298	16	25°38'50.32S	27°26'1.71E	Farm Portion
74	ZWARTKOPPIES	296	115	25°39'57.18S	27°28'2.54E	Farm Portion
75	ZWARTKOPPIES	296	29	25°38'42.61S	27°27'16.37E	Farm Portion
76	ZWARTKOPPIES	296	13	25°38'49.91S	27°27'9.01E	Farm Portion
77	ROOIKOPPIES	297	134	25°40'33.59S	27°28'12.48E	Farm Portion
78	ROOIKOPPIES	297	43	25°40'35.29S	27°28'11.89E	Farm Portion
79	ROOIKOPPIES	297	164	25°40'56.93S	27°28'13.59E	Farm Portion
80	ROOIKOPPIES	297	135	25°41'11.25S	27°27'26.76E	Farm Portion
81	ROOIKOPPIES	297	124	25°40'29.81S	27°26'22.68E	Farm Portion
82	ROOIKOPPIES	297	136	25°40'20.56S	27°26'41.63E	Farm Portion
83	HOEDSPRUIT	298	0	25°40'4.65S	27°24'22.15E	Farm Portion

Development footprint¹ vertices:
No development footprint(s) specified.

Wind and Solar developments with an approved Environmental Authorisation or applications under consideration within 30 km of the proposed area

No	EIA Reference No	Classification	Status of application	Distance from proposed area (km)
1	14/12/16/3/3/1/1297	Solar PV	Approved	15.8
2	12/12/20/2145	Solar PV	Approved	4.9
3	12/12/20/2283	Solar PV	Approved	4.9

Environmental Management Frameworks relevant to the application

No intersections with EMF areas found.

Environmental screening results and assessment outcomes

The following sections contain a summary of any development incentives, restrictions, exclusions or prohibitions that apply to the proposed development site as well as the most environmental sensitive features on the site based on the site sensitivity screening results for the application classification that was selected. The application classification selected for this report is:

Utilities Infrastructure | Pipelines | Water | Waste Water.

Relevant development incentives, restrictions, exclusions or prohibitions

The following development incentives, restrictions, exclusions or prohibitions and their implications that apply to this site are indicated below.

Incentive, restriction or prohibition	Implication
Air Quality-Waterberg-Bojanala Priority Area	https://screening.environment.gov.za/ScreeningDownloads/DevelopmentZones/gg39489_nn1207a.pdf
Strategic Gas Pipeline Corridors-Phase 3: Richards Bay to Gauteng	https://screening.environment.gov.za/ScreeningDownloads/DevelopmentZones/Combined_GAS.pdf

Proposed Development Area Environmental Sensitivity

The following summary of the development site environmental sensitivities is identified. Only the highest environmental sensitivity is indicated. The footprint environmental sensitivities for the

¹ “development footprint”, means the area within the site on which the development will take place and includes all ancillary developments for example roads, power lines, boundary walls, paving etc. which require vegetation clearance or which will be disturbed and for which the application has been submitted.

proposed development footprint as identified, are indicative only and must be verified on site by a suitably qualified person before the specialist assessments identified below can be confirmed.

Theme	Very High sensitivity	High sensitivity	Medium sensitivity	Low sensitivity
Agriculture Theme		X		
Animal Species Theme			X	
Aquatic Biodiversity Theme	X			
Archaeological and Cultural Heritage Theme		X		
Civil Aviation Theme		X		
Defence Theme				X
Paleontology Theme			X	
Plant Species Theme				X
Terrestrial Biodiversity Theme	X			

Specialist assessments identified

Based on the selected classification, and the known impacts associated with the proposed development, the following list of specialist assessments have been identified for inclusion in the assessment report. It is the responsibility of the EAP to confirm this list and to motivate in the assessment report, the reason for not including any of the identified specialist study including the provision of photographic evidence of the site situation.

No	Specialist assessment	Assessment Protocol
1	Agricultural Impact Assessment	https://screening.environment.gov.za/ScreeningDownloads/AssessmentProtocols/Gazetted General Agriculture Assessment Protocols.pdf
2	Archaeological and Cultural Heritage Impact Assessment	https://screening.environment.gov.za/ScreeningDownloads/AssessmentProtocols/Gazetted General Requirement Assessment Protocols.pdf
3	Palaeontology Impact Assessment	https://screening.environment.gov.za/ScreeningDownloads/AssessmentProtocols/Gazetted General Requirement Assessment Protocols.pdf
4	Terrestrial Biodiversity Impact Assessment	https://screening.environment.gov.za/ScreeningDownloads/AssessmentProtocols/Gazetted Terrestrial Biodiversity Assessment Protocols.pdf
5	Aquatic Biodiversity Impact Assessment	https://screening.environment.gov.za/ScreeningDownloads/AssessmentProtocols/Gazetted Aquatic Biodiversity Assessment Protocols.pdf
6	Hydrology Assessment	https://screening.environment.gov.za/ScreeningDownloads/AssessmentProtocols/Gazetted General Requirement Assessment Protocols.pdf
7	Geotechnical Assessment	https://screening.environment.gov.za/ScreeningDownloads/AssessmentProtocols/Gazetted General Requirement Assessment Protocols.pdf
8	Socio-Economic Assessment	https://screening.environment.gov.za/ScreeningDownloads/AssessmentProtocols/Gazetted General Requirement Assessment Protocols.pdf
9	Seismicity Assessment	https://screening.environment.gov.za/ScreeningDownloads/AssessmentProtocols/Gazetted General Requirement Assessment Protocols.pdf

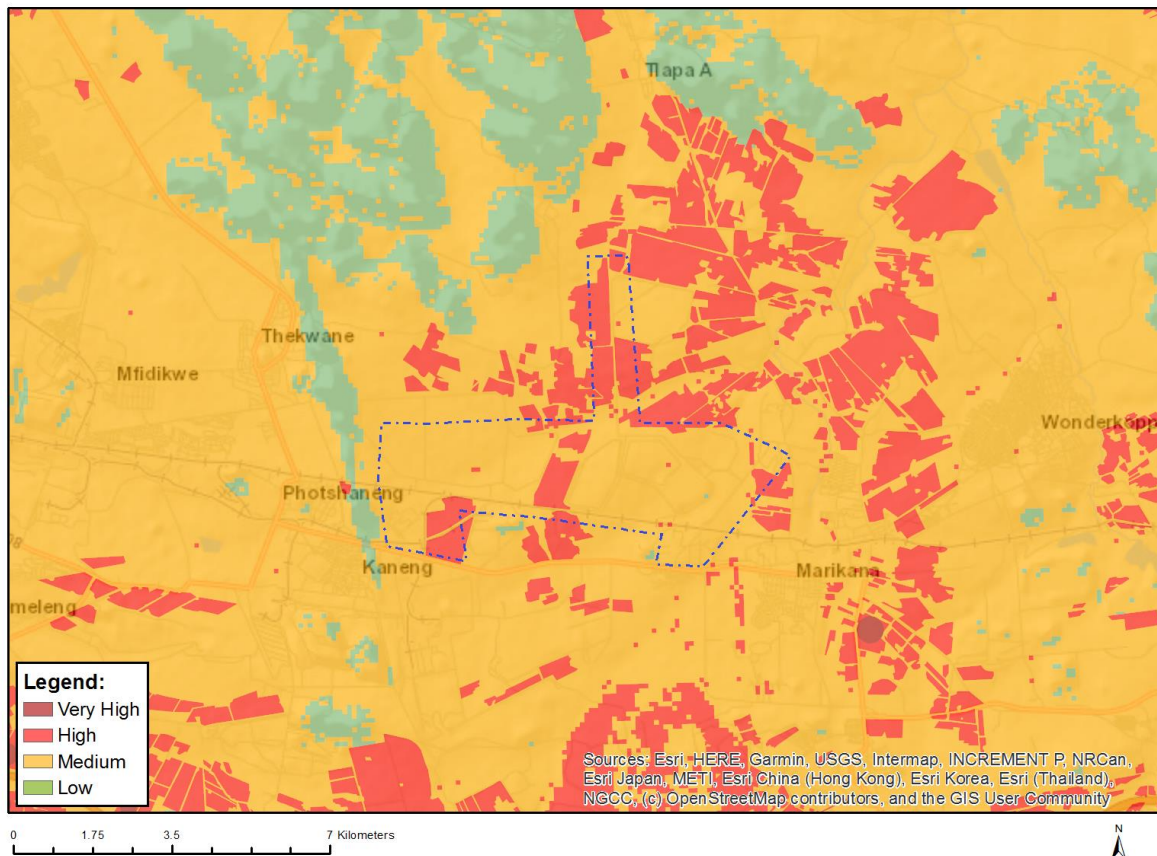
		ssmentProtocols/Gazetted_General_Requirement_Assessment_Protocols.pdf
10	Plant Species Assessment	https://screening.environment.gov.za/ScreeningDownloads/AssessmentProtocols/Gazetted_Plant_Species_Assessment_Protocols.pdf
11	Animal Species Assessment	https://screening.environment.gov.za/ScreeningDownloads/AssessmentProtocols/Gazetted_Animal_Species_Assessment_Protocols.pdf

OFFICIAL

Results of the environmental sensitivity of the proposed area.

The following section represents the results of the screening for environmental sensitivity of the proposed site for relevant environmental themes associated with the project classification. It is the duty of the EAP to ensure that the environmental themes provided by the screening tool are comprehensive and complete for the project. Refer to the disclaimer.

MAP OF RELATIVE AGRICULTURE THEME SENSITIVITY

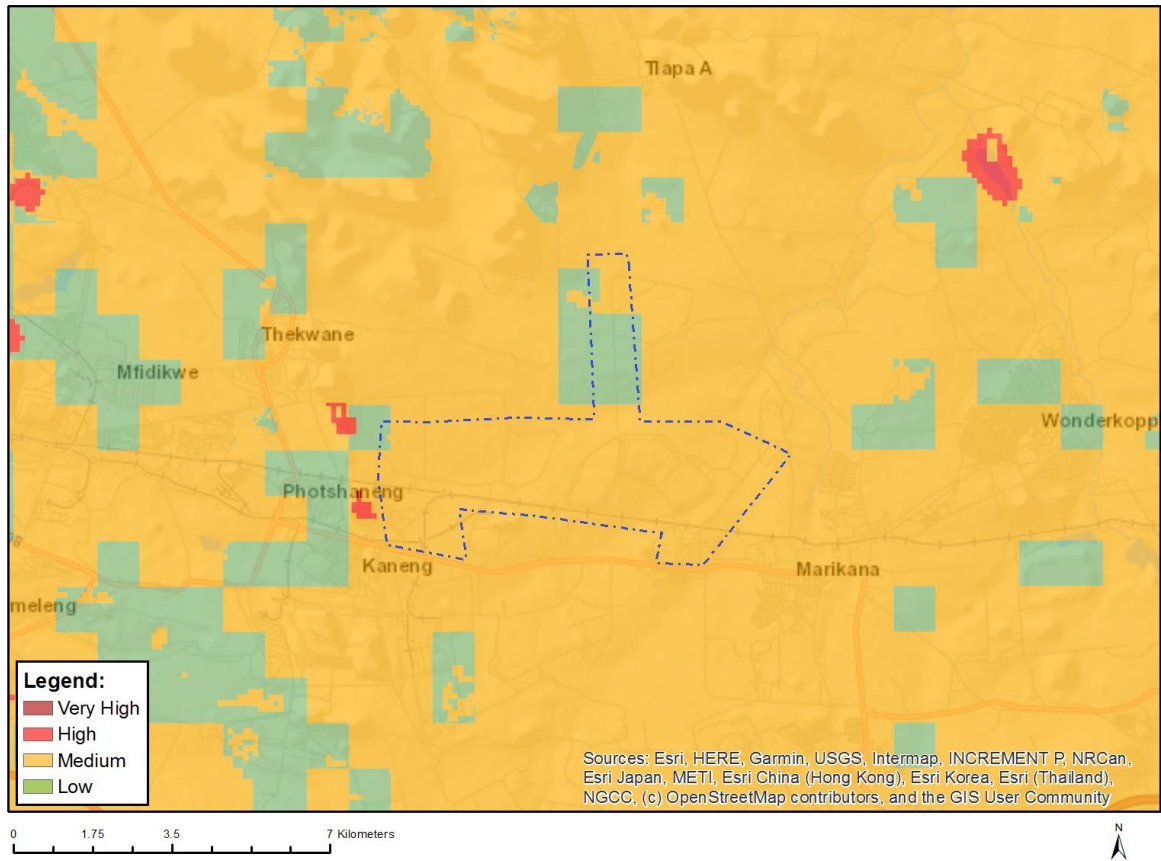


Very High sensitivity	High sensitivity	Medium sensitivity	Low sensitivity
	X		

Sensitivity Features:

Sensitivity	Feature(s)
High	Land capability;09. Moderate-High/10. Moderate-High
High	Annual Crop Cultivation / Planted Pastures Rotation;Land capability;06. Low-Moderate/07. Low-Moderate/08. Moderate
High	Annual Crop Cultivation / Planted Pastures Rotation;Land capability;09. Moderate-High/10. Moderate-High
Low	Land capability;01. Very low/02. Very low/03. Low-Very low/04. Low-Very low/05. Low
Medium	Land capability;06. Low-Moderate/07. Low-Moderate/08. Moderate

MAP OF RELATIVE ANIMAL SPECIES THEME SENSITIVITY



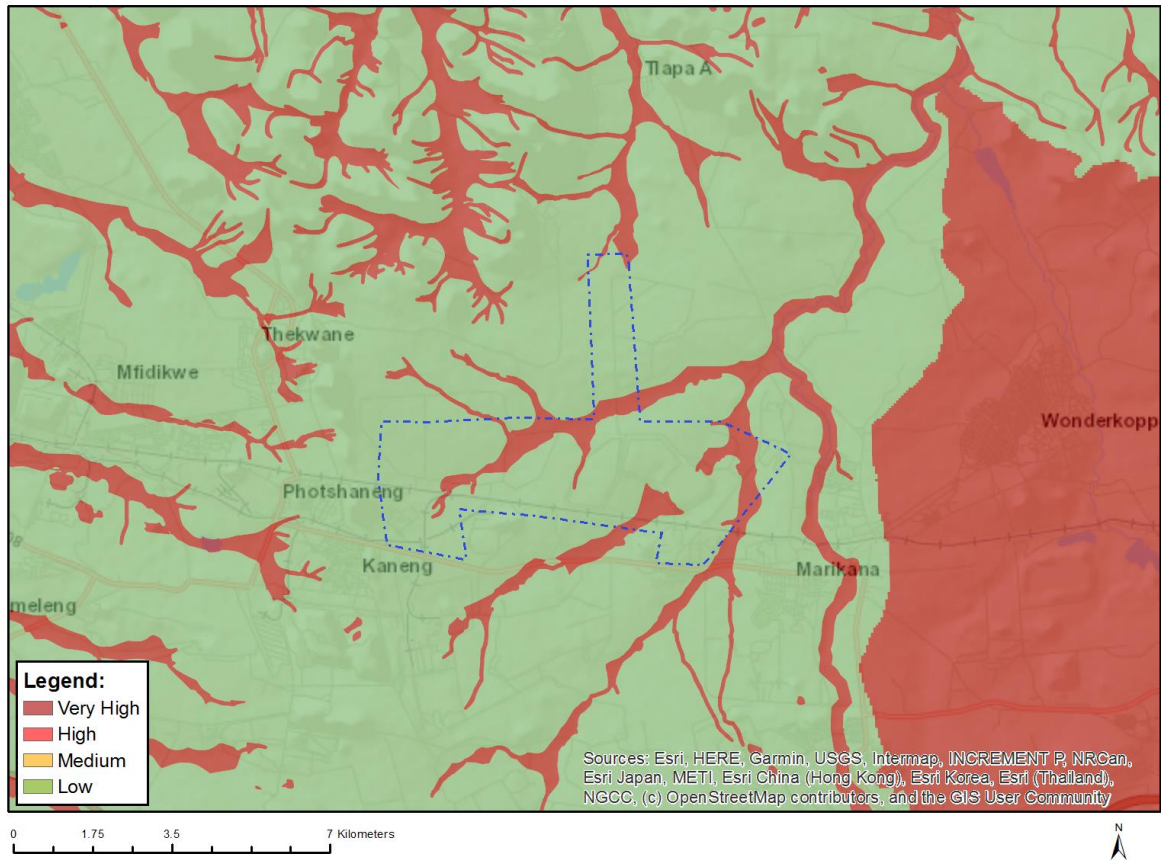
Where only a sensitive plant unique number or sensitive animal unique number is provided in the screening report and an assessment is required, the environmental assessment practitioner (EAP) or specialist is required to email SANBI at eiadatarequests@sanbi.org.za listing all sensitive species with their unique identifiers for which information is required. The name has been withheld as the species may be prone to illegal harvesting and must be protected. SANBI will release the actual species name after the details of the EAP or specialist have been documented.

Very High sensitivity	High sensitivity	Medium sensitivity	Low sensitivity
		X	

Sensitivity Features:

Sensitivity	Feature(s)
Low	Subject to confirmation
Medium	Aves-Hydroprogne caspia
Medium	Aves-Sagittarius serpentarius
Medium	Aves-Aquila rapax
Medium	Mammalia-Crocidura maquassiensis
Medium	Mammalia-Dasymys robertsii

MAP OF RELATIVE AQUATIC BIODIVERSITY THEME SENSITIVITY

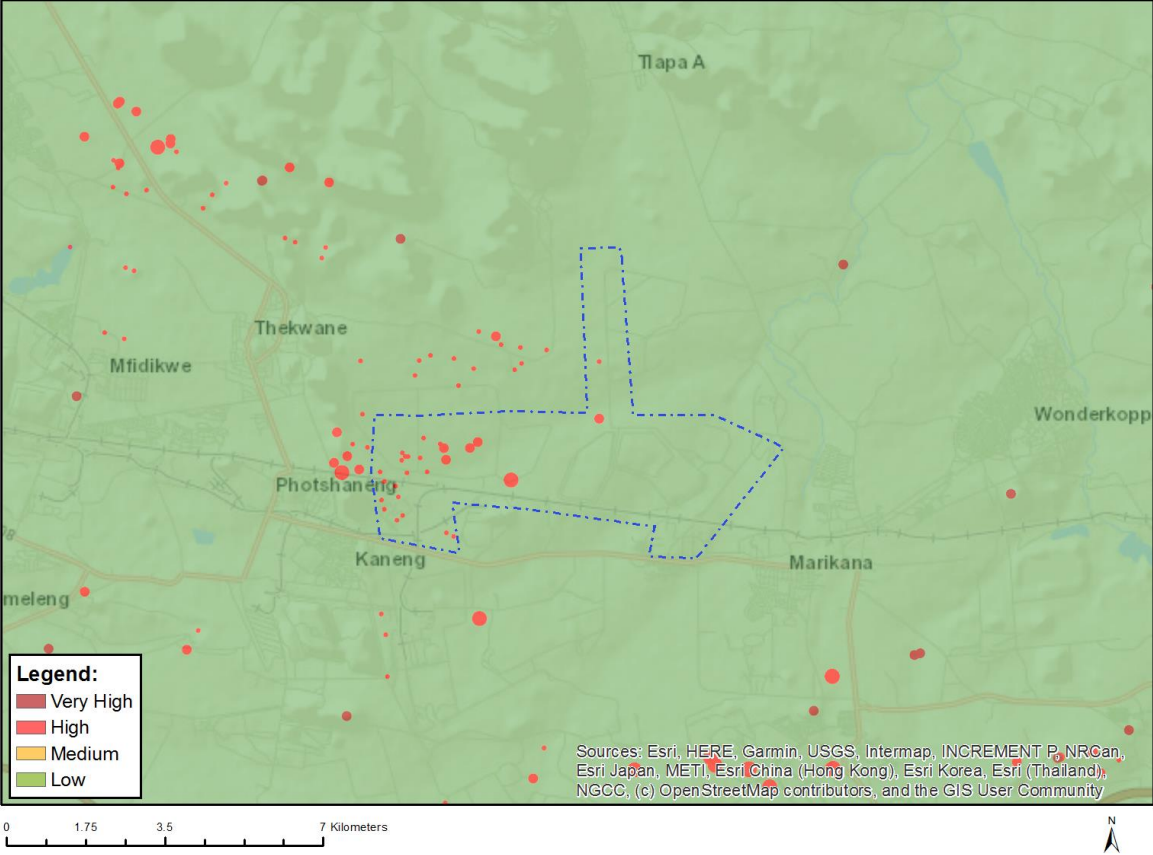


Very High sensitivity	High sensitivity	Medium sensitivity	Low sensitivity
X			

Sensitivity Features:

Sensitivity	Feature(s)
Low	Low sensitivity
Very High	ESA 1
Very High	ESA 2
Very High	Wetlands_Central Bushveld Bioregion (Seep)
Very High	Wetlands_Central Bushveld Bioregion (Valley-bottom)

MAP OF RELATIVE ARCHAEOLOGICAL AND CULTURAL HERITAGE THEME SENSITIVITY

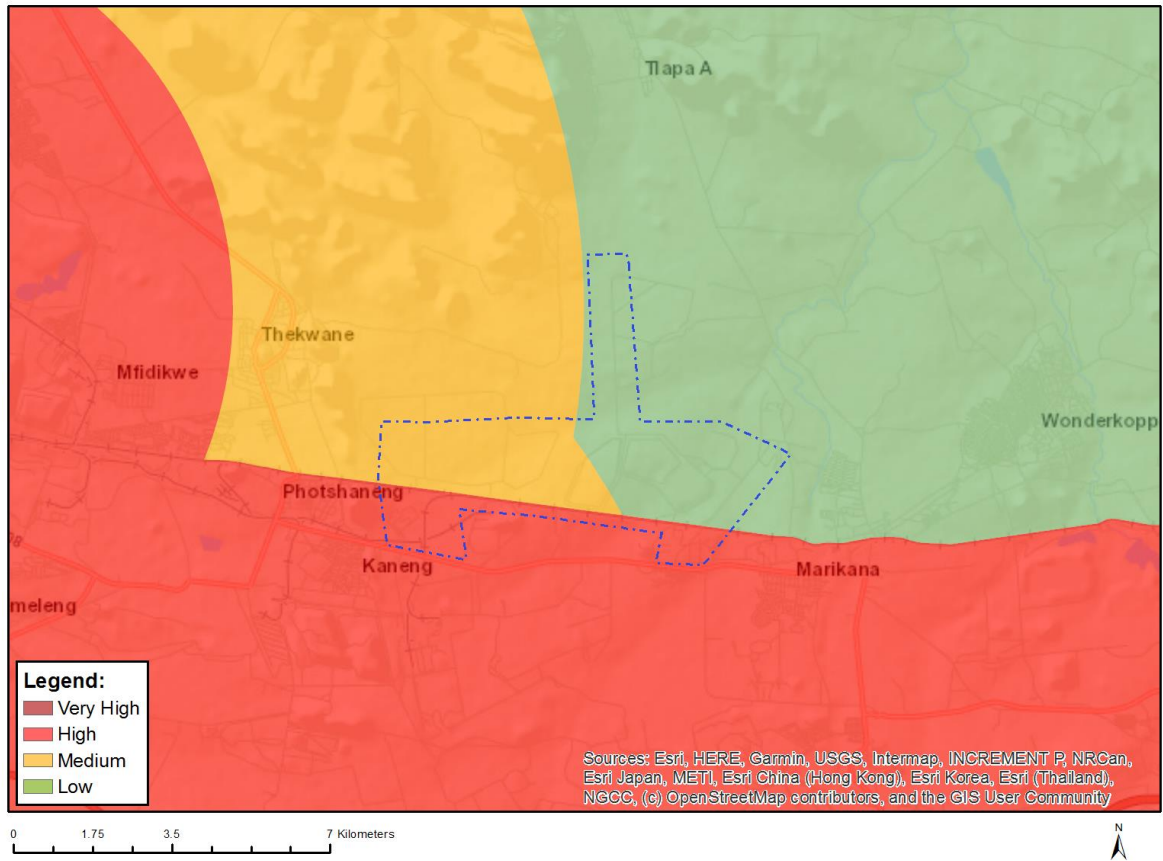


Very High sensitivity	High sensitivity	Medium sensitivity	Low sensitivity
	X		

Sensitivity Features:

Sensitivity	Feature(s)
High	Within 150m of a Grade IIIa Heritage site
High	Within 100m of a Grade IIIb Heritage site
High	Within 50m of a Grade IIIc Heritage site
Low	Low sensitivity

MAP OF RELATIVE CIVIL AVIATION THEME SENSITIVITY

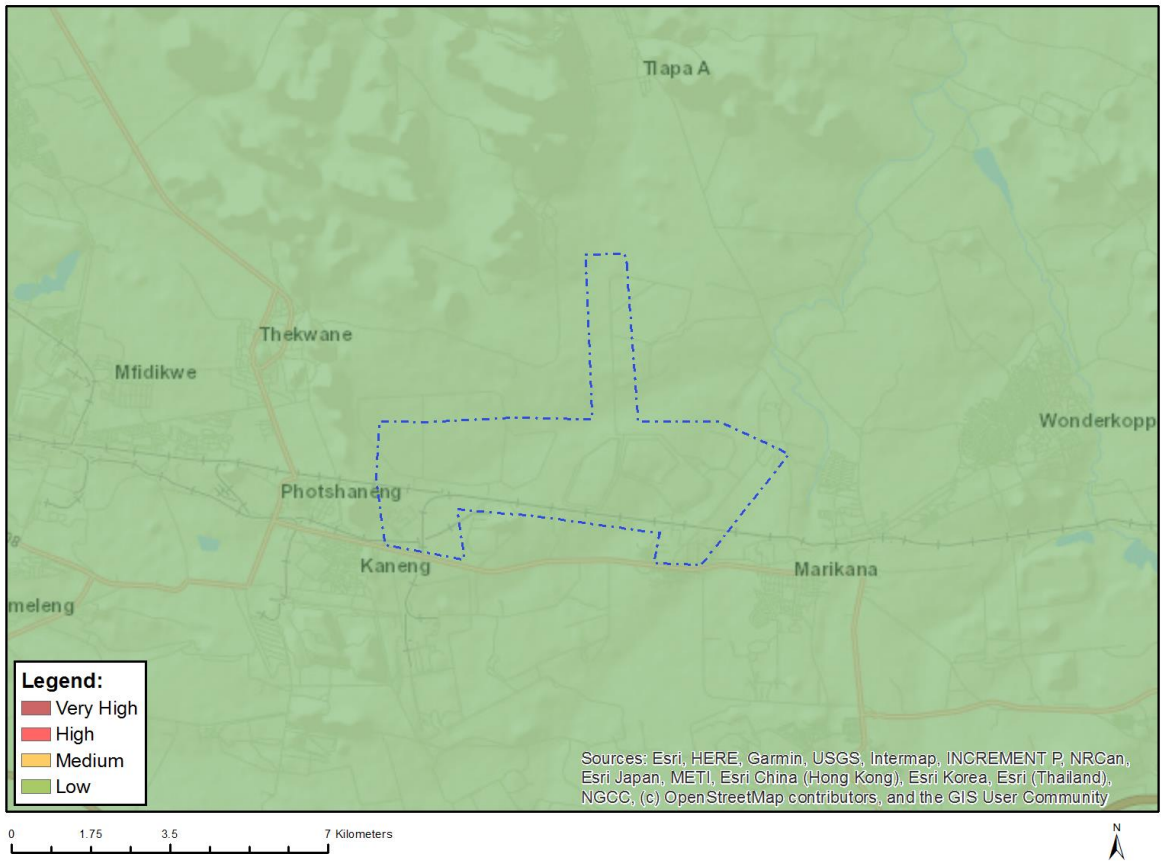


Very High sensitivity	High sensitivity	Medium sensitivity	Low sensitivity
	X		

Sensitivity Features:

Sensitivity	Feature(s)
High	Dangerous and restricted airspace as demarcated
Low	Low sensitivity
Medium	Between 8 and 15 km of other civil aviation aerodrome

MAP OF RELATIVE DEFENCE THEME SENSITIVITY

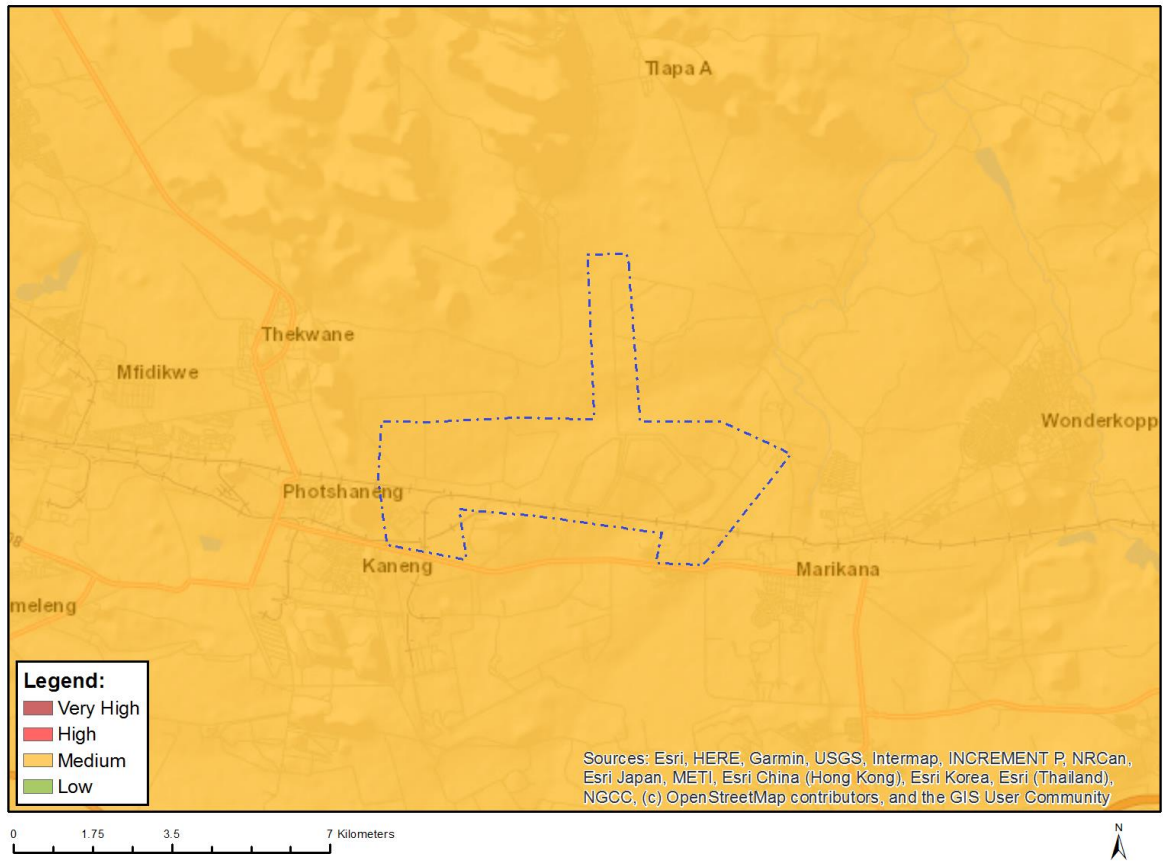


Very High sensitivity	High sensitivity	Medium sensitivity	Low sensitivity
			X

Sensitivity Features:

Sensitivity	Feature(s)
Low	Low Sensitivity

MAP OF RELATIVE PALEONTOLOGY THEME SENSITIVITY

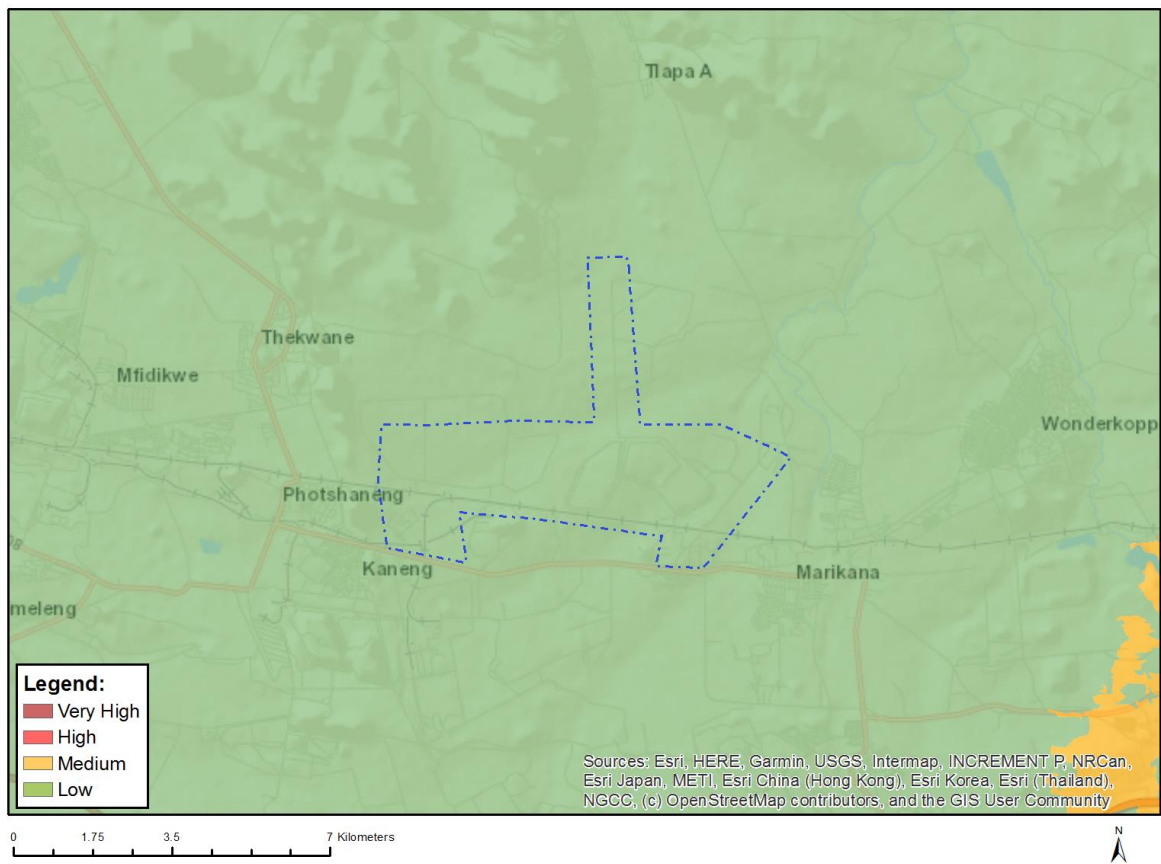


Very High sensitivity	High sensitivity	Medium sensitivity	Low sensitivity
		X	

Sensitivity Features:

Sensitivity	Feature(s)
Medium	Features with a Medium paleontological sensitivity

MAP OF RELATIVE PLANT SPECIES THEME SENSITIVITY



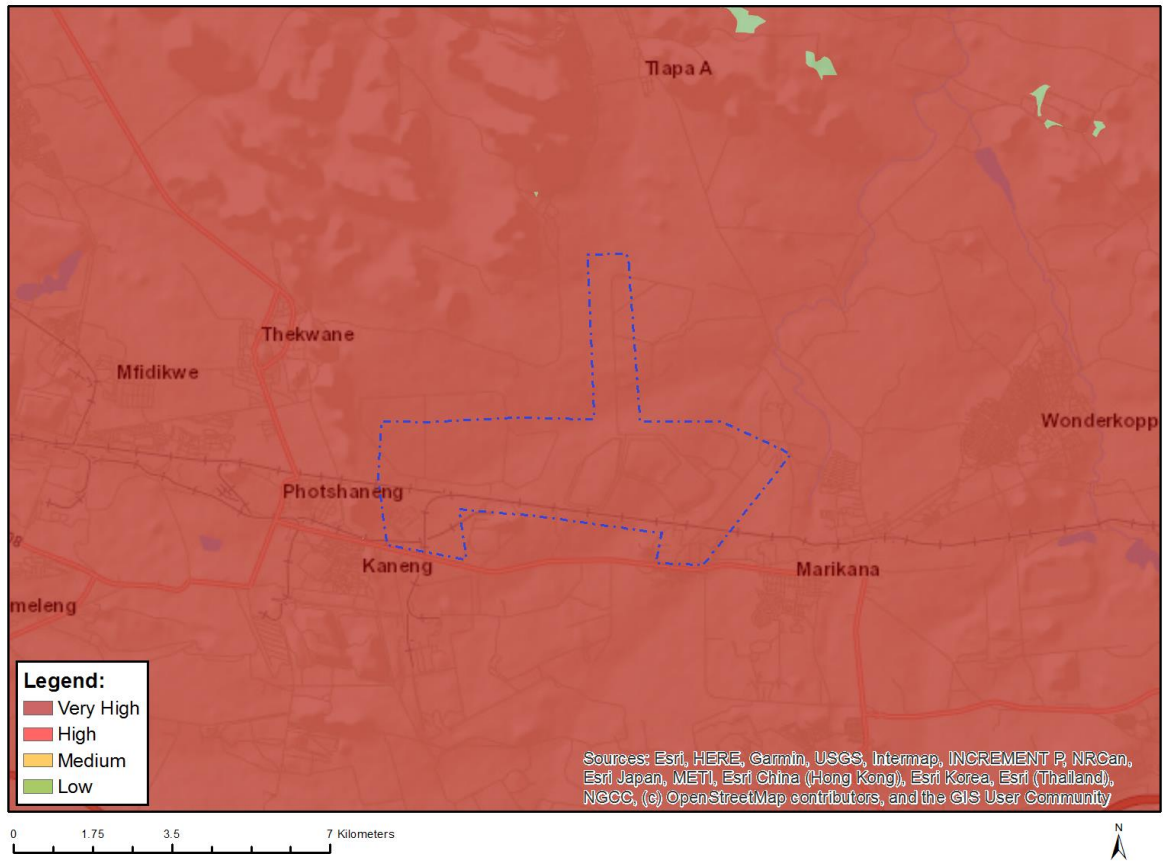
Where only a sensitive plant unique number or sensitive animal unique number is provided in the screening report and an assessment is required, the environmental assessment practitioner (EAP) or specialist is required to email SANBI at eiadatarequests@sanbi.org.za listing all sensitive species with their unique identifiers for which information is required. The name has been withheld as the species may be prone to illegal harvesting and must be protected. SANBI will release the actual species name after the details of the EAP or specialist have been documented.

Very High sensitivity	High sensitivity	Medium sensitivity	Low sensitivity
			X

Sensitivity Features:

Sensitivity	Feature(s)
Low	Low Sensitivity

MAP OF RELATIVE TERRESTRIAL BIODIVERSITY THEME SENSITIVITY



Very High sensitivity	High sensitivity	Medium sensitivity	Low sensitivity
X			

Sensitivity Features:

Sensitivity	Feature(s)
Very High	CBA 2
Very High	ESA 1
Very High	ESA 2
Very High	National Protected Area Expansion Strategy (NPAES)
Very High	EN_Marikana Thornveld