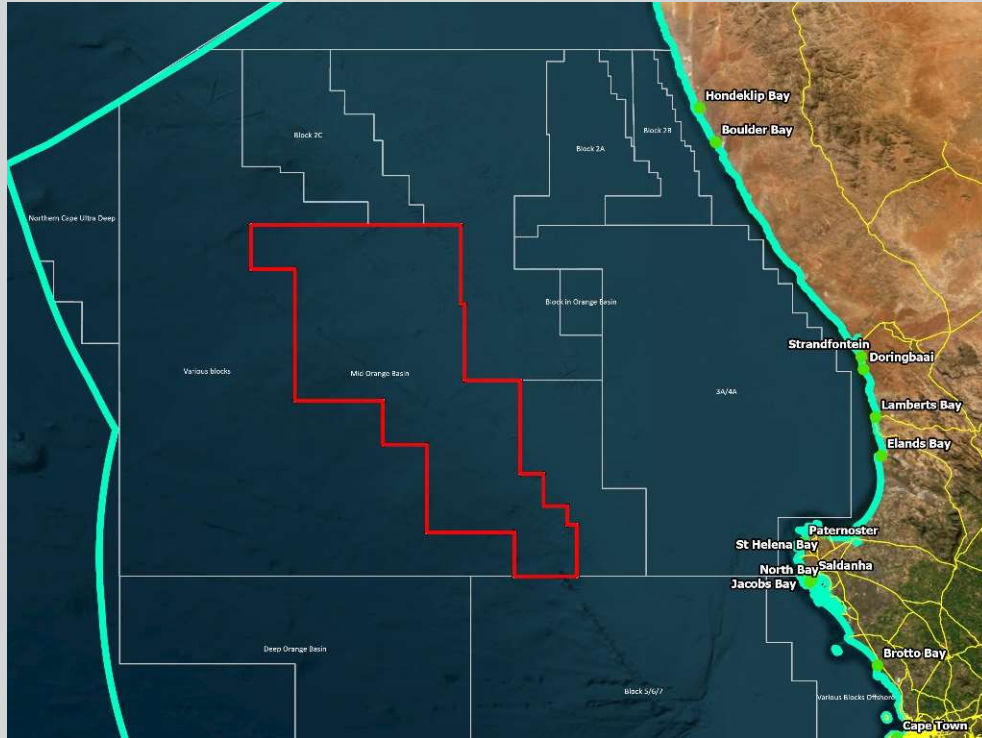


IMVELAPHI UXWEBHU LOLWAZI

INKQUBO YOKUFAKA ISICELO SOKUGUNYAZISWA
KOKO KUSINGQONGILEYO YOKUPHONONONGA
KUNXWEME OLUNGAPHANDLE KU-BLOCK 3B/4B KA-
AFRICA OIL SA CORP YOVAVANYO
LWEMPEMBELELO YENDALO



UXWEBHU INJONGO

- Olu xwebhu loLwazi lweMvelaphi (BID) lubonelela wena, njengeQela elinomdla neliChaphazelekayo (I&AP), isishwankathelo seprojekthi ecetywayo.
- I-BID iyakumema, njenge-I&AP, ukuba uthathe inxaxheba kwiNkqubo yokuThatha iNxaxheba koLuntu efunekayo.
- I-BID ikubonelela, njengeQela Elinomdla nelichaphazelekayo ngethuba lokunikela nokuthatha inxaxheba kuqulunqo lweNgxelo yoVavanyo oluSisiseko (BA).
- I-BID ikwabonelela wena, njenge-I&AP ithuba lokubonelela iqela leprojekthi ngezimvo zakho, iinkxalabo

INTSHAYELELO

I-Africa Oil SA Corp, i-Ricocure (Pty) Ltd kunye ne-Azinam Limited (inkampani ephantsi ngokupheleleyo ye-Eco Atlantic) (i-Joint Venture Partners ye-Block 3B/4B yokuHlola iLungelo - emva koku kubhekiselwa kubo ngokuba ngabafaki-zicelo) baqeshe iiNkonzo zoLawulo lweMpembelelo yokuSingqongileyo. (Pty) Ltd (EIMS) njengoMsebenzi woVavanyo lokuSingqongileyo (EAP) ukuncedisa ekwenzeni iinkqubo zogunyaziso ezifunekayo (kubandakanywa nentatho-nxaxheba yoluntu ngokusemthethweni), kunye nokuqulunqa nokungenisa amaxwebhu afunekayo ukuxhasa isicelo soGunyaziso lweNdalo (EA) ngokuhambelana neNEMA. Inkqubo yoVavanyo lweMpembelelo yokuSingqongileyo (EIA) iya kwenziwa ngokweSahluko sesi-6 seMimiselo ye-EIA, yowama-2014 (GNR 982) ebhengezwe phantsi kweNEMA (njengoko ilungisiwe). Inkqubo yoVavanyo lweMpembelelo yokusiNgqongileyo (Scoping and Environmental Impact Assessment) (EIA) iya kulandelwa.

Injongo yoXwebhu loLwazi olungeMvelaphi (BID):

Injongo ye-BID kuku:

- Ukubonelela ngesishwankathelo soGunyaziso lokusiNgqongileyo/iZicelo zeLayisenisi kunye neenkqubo zokuthatha inxaxheba koluntu eziya kuqhutywa kwiprojekthi ecetywayo;
- Vumela amaQela aNomdla naChaphazelekayo (I&APs) ithuba lokufumana ukuqonda okubanzi ngeprojekthi ecetywayo kunye nokucela okanye ukwabelana ngolwazi; kwaye



kunye nenkcaso kwiprojekthi ecetywayo.

- Nika iinkcukacha malunga nendlela ama-I&APs anokubhalisa ngayo umdla wawo kwaye angenise izimvo malunga neprojekthi. Kubalulekile ukuqaphela ukuba zii-I&APs ezibhalisiweyo kuphela eziya kufumana unxibelelwano olulungezelelweyo malunga neprojekthi ngexesha lenkqubo ye-EIA (okt isimemo sokuphonononga kunye nokuhlomla kwi- Scoping and EIA Reports).

INDAWO, ISIKALI, KUNYE NOMDA WEPROJEKTHI ECETYWAYO

Abafaki-zicelo bangabanikazi beLungelo lokuHlola elikhoyo leBloko 3B/4B ngokoMthetho woPhuhliso lweMithombo yeziMbiwa nePetroleum (Nombolo 28 ka-2002 – MPRDA), njengoko ulungisiwe. Ibhloko yelayisenisi igubungela ummandla omalunga ne-11 100 km² kwaye iphakathi kobubanzi obungama-31°S nama-33°S kwishelufa yelizwekazi kubunzulu bamanzi ukusuka kuma-200 m ukuya kuma-2 000 m.

IBlock 3B/4B ime malunga ne-120 km kwintshona ye-St Helena Bay kwaye malunga ne-145 km kumzantsi-ntshona we-Hondeklip Bay kude noNxweme oluseNtshona loMzantsi Afrika. Ummandla womdla ophambili usemantla ale bhloko, kodwa oku kunokubandakanya nezinye iindawo kwixesha elizayo. Njengenxalenye yenkqubo yokufaka isicelo seLungelo lokuHlola, umenzi-sicelo uthabathe waza wagqiba iprojekthi yokuhlaziya kwakhona egubungela i-2 000 km², eyi-subset ye-10 000 km² BHP/Shell 3D seismic datasets, ejolise ikakhulu kwezona ndawo zingasentla. yeBloko 3B/4B.

Amanqaku olungelelwaniso lwekona yendawo yesicelo zezi zilandelayo:

Inqaku	Ububanzi	Ubude	Inqaku	Ububanzi	Ubude
1	-31.00030518	14.74908447	12	-32.70800781	16.60467529
2	-31.00030518	15.94488525	13	-33.00018311	16.60467529
3	-31.45031738	15.94488525	14	-33.00030518	16.24932861
4	-31.45031738	15.96588135	15	-32.75030518	16.24932861
5	-31.88360596	15.96588135	16	-32.75030518	15.74908447
6	-31.88360596	16.2824707	17	-32.25030518	15.74908447
7	-32.41699219	16.2824707	18	-32.25030518	15.49908447
8	-32.41699219	16.41589356	19	-32.00030518	15.49908447
9	-32.60028076	16.41589356	20	-32.00030518	14.99908447
10	-32.60028076	16.54931641	21	-31.25030518	14.99908447
11	-32.70800781	16.54931641	22	-31.25030518	14.74908447

Iidolophu ezikufutshane okanye indawo yomdla: Cape Town, Hout Bay, Saldanha, Lamberts Bay, Hondeklip Bay and Port Nolloth. Nceda ujonge kwimephu yendawo ekupheleni kwale BID.

IIMFUNO ZOWISO-MTHETHO

Iprojekthi ecetywayo ifuna izigunyaziso ezithile, iimvume, iimvume, kunye/okanye iilayisenisi. Ezi mfuno zilandelayo zichongwe ngokukodwa:

Umthetho ofanelekileyo	Imisebenzi edwelisiweyo okanye izichukumisi	Ugunyaziso, ukuVunywa, iLayisenisi, okanye imfuneko yeMvume:
Isahluko sesi-5 se-NEMA	ISaziso soDweliso sesi-2: Umsebenzi we-18: Nawuphi na umsebenzi oquka ukusebenza kwaloo msebenzi ofuna ilungelo lokuphonononga njengoko kuchaziwe kwicandelo lama-79 loMthetho woPhuhliso lweMithombo yeziMbiwa nePetroleum, ka-2002 (uMthetho onguNombolo 28 ka-2002), kubandakanywa — (a) ezinxulumene noko. iziseko ezingundoqo, izakhiwo kunye nemisebenzi yomhlaba; okanye (b) inkqubo yokuqala yomthombo wepetroleum	Ugunyaziso lokusiNgqongileyo (EA)



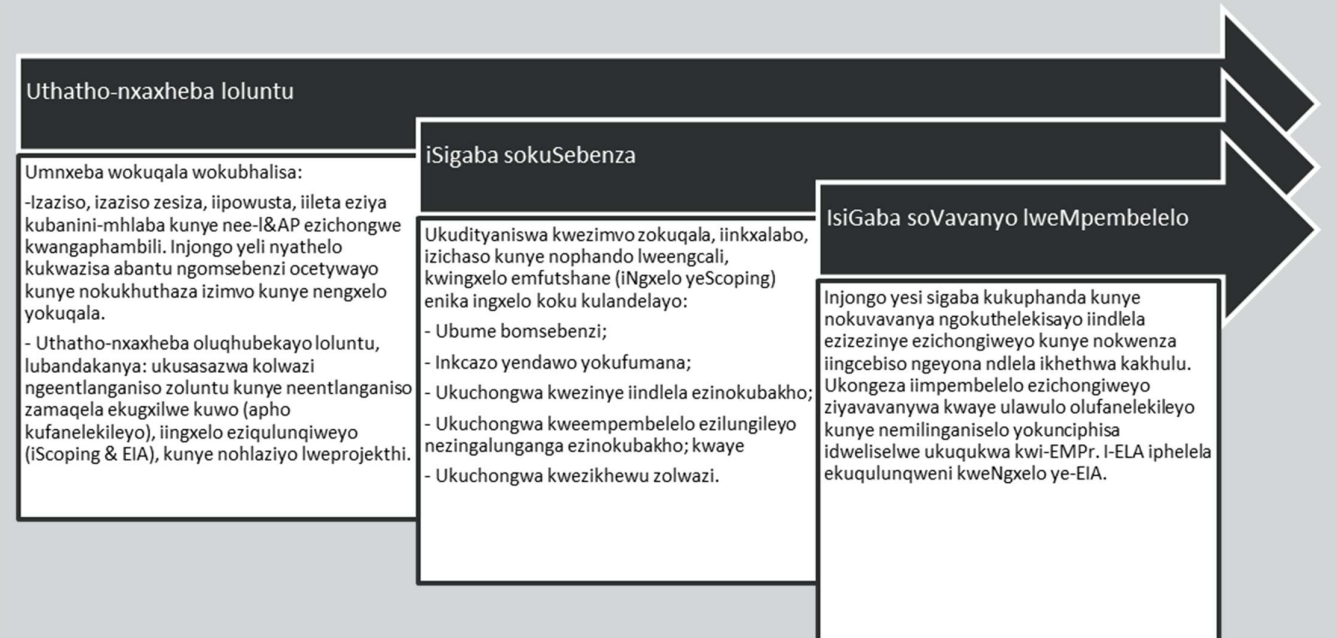
	<p>kubandakanywa ukuphumelela, ukukhutshwa, ukwahlula, ukugxila okanye ukuthuthwa kwamanzi; kodwa kungabandakanywa ukusetyenzwa okwesibini komthombo wepetroleum, kubandakanywa ukuzuzwa okanye ukucokiswa kwerhasi, i-oyile okanye iimveliso zepetroleum apho kusebenza umsebenzi wesi-5 kwesi Saziso.</p>	
--	---	--

Njengesiphumo sokuxhokonxa la malungiselelo angasentla, kukho imfuneko yokwenza i-Scoping kunye nenkqubo ye-EIA . INkqubo ye -Scoping kunye ne-EIA kufuneka yenziwe ngokuhambelana neemfuno zeMimiselo ye-NEMA EIA, yowama-2014, njengoko ilungisiwe (GNR982). Imisebenzi eyongezelelweyo edwelisiweyo kunye/okanye ukusetyenziswa kwamanzi kunokuchongwa ngexesha lenkqubo.

INKQUBO YOVAVANYO LWEMPEMBELELO

I-EIA (kule meko i-Scoping and EIA) sisixhobo sokucwangcisa nesokwenza izigqibo, ukuchaza nokuvavanya iimpembelelo ezibonakalayo, zebhayoloji, ezentlalo, nezozoqoqosho ezinokuthi zibe nazo uphuhliso okanye iprojekthi ethile. Ukuze ukwazi ukwazisa inkqubo yokwenziwa kwezigqibo, kubalulekile ukuba imiba yoluntu neenkxalabo zichongwe kwangethuba, ukuze iqela le-EIA likwazi ukuyivavanya.

Inkqubo ye-EIA ivumela iziphumo zokusingqongileyo zeprojekthi ecetywayo ukuba ichongwe ngaphambili, iphandwe kuyo yonke inkqubo yovavanyo lwempembelelo, kwaye ithathelwe ingqalelo ngabasemagunyeni athatha izigqibo. I-EAP kunye neengcaphephe ezahlukeneyo zikwachonga iimpembelelo ezinokuba kho ezimbi nezilungileyo ezinokubela ngenxa yeprojekthi ecetywayo kwaye ichonge imilinganiselo yokunciphisa efunekayo, ukunqanda okanye ukunciphisa iimpembelelo ezingalunganga kunye nokomeleza iimpembelelo ezilungileyo.



Nje ukuba iinkqubo ezifanelekileyo zigqitywe namaxwebhu okugqibela angeniswe kwigunyabantu elinobuchule, ugunyaziwe onobuchule uyasijongisisa isicelo kwaye enze isigqibo esinolwazi. Amaqela Anomdla Nachaphazelekayo aya kwaziswa ngesigqibo kunye nelungelo lawo lokubhena kwimeko apho angavumelani nesigqibo.

IMIPHUMELA YOKUSINGQONGILEYO

Enye yezinto eziphambili eziqhuba i-EIA eyimpumelelo kukuqinisekisa ukuba iimpembelelo ezinokuthi zibe kho (ezilungileyo nezibi) zichongiwe kwaye ziphandwe. Iimpembelelo ezongezelekileyo zinokuchongwa kwaye iingcali ezifanelekileyo ziya kubandakanywa kwiqela ukuze kuhlolwe ngokuchanekileyo nangokungakhethi cala ezi mpembelelo zinokwenzeka. Imizekelo yeempembelelo ezinokubakho zokusingqongileyo ezinxulumene neprojekthi ecetywayo inikwe ngezantsi:

- Iimpembelelo zecandelo lokuloba.
- Ii-oyile ziyachitheka kunye neempembelelo zokusika i-drill.



- Iimpembelelo ze-ikholoji yaselwandle.
- Iimpembelelo kubume bentlalo kunye neempembelelo zelifa lemveli ezingaphathekiyo.

Ezi mpembelelo zikhankanywe ngasentla akufuneki zithathwe njengezo kuphela iimpembelelo eziya kuchongwa ngexesha lovavanyo. Ngokusekwe kudliwano-ndlebe noluntu, igalelo leengcali kunye novavanyo oluneenkukacha ezingaphezulu, iimpembelelo ezongezelweyo ziya kuchongwa kwaye zivavanywe. Zonke iimpembelelo ezinokubakho ziya kuchongwa kwaye zivavanywe ngokulandela indlela yovavanyo lwempembelelo ekhokelwa ziimfuno zeMimiselo ye-NEMA EIA, 2014. Indlela ebanzi yokujonga indlela yokubaluleka komgangatho kukuqinisekisa umngcipheko wokusingqongileyo (ER) ngokuqwalasela isiphumo (C) impembelelo nganye (ebandakanya iNdalo, uMda, uBude bexesha, uMkhulu, kunye nokuBuyiswa) kwaye yayamanisa oku nokwenzeka/ukuba nokwenzeka (P) kwempembelelo eyenzekayo. Oku kugqiba umngcipheko wokusingqongileyo. Ukongeza, ezinye izinto ezibandakanya iimpembelelo ezongezekayo, inkxalabo yoluntu, kunye nokubakho kwelahleko engenakubuyiselwa yezibonelelo, zisetyenziselwa ukumisela umba wokubaluleka (PF) osetyenziswa kwi-ER ukumisela ukubaluleka okupheleleyo (S).

Ngaphaya koko, ngokusekelwe kwiimpembelelo ezichongiweyo kunye nokulinganisa kwazo, amanyathelo okunciphisa kunye nolawulo ayacetyiswa kumfaki-sicelo kwaye ezi zibandakanyiwe kwiNkqubo yoLawulo lokusiNgqongileyo (EMPr) ekuqinisekiseni ukuba naziphi na iimpembelelo ezimbi ezingenako ukuphetshwa ziyacuthwa kwaye zilawulwe, kunye neempembelelo ezilungileyo. nkulu. Uphononongo lweengcali lusenkusetyenziswa ukukhokela nokwazisa uhlobo lweempembelelo ezinokuthi zibe kho. Uphononongo lweengcali oluchongiweyo ukuba lubandakanywe kolu vavanyo lubandakanya:

- UVavanyo lweMpmbelelo yeNdalo yaseLwandle.
- UVavanyo lweMpmbelelo yezokuLoba.
- IModeli yeAcoustic.
- UVavanyo lweLifa leNkcubeko.
- UVavanyo lweMpmbelelo yeNtlalo.
- Umgangatho woMoya kunye noTshintsho lweMozulu.
- Ukuchithwa kwe-oyile kunye ne-Drill Cuttings Modelling.
- UVavanyo lweMpmbelelo yezoQoqosho.

Imfuneko yophando olongezelekileyo lweengcaphephe inokuchongwa ngenkqubo yokuHlola kunye ne-EIA.

INDELELA YOKUZIBANDAKANYA

Ukuba unoluvo lokuba unomdla, okanye uchatshazelwa yile projekthi, kubalulekile ukuba ubhalise njengeQela elinomdla nelichaphazelekayo (I&AP) apho uya kwaziswa malunga neprojekthi kwaye unikwe ithuba lokuthatha inxaxheba inkqubo. Nceda uqaphele ukuba kuphela ii-I&AP ezibhalisiweyo eziya kubandakanywa kwimbalelwano yexesha elizayo malunga neprojekthi nohlaziyo olunxulumeneyo. Ungabhalisa kunye/okanye uphawule njengeQela Elinomdla nelichaphazelekayo nangayiphi na kwezi ndlela zilandelayo:

- Gcwalisa ifom yobhaliso ye-I&AP kunye nekhweshine uze uyibuyisele kwi-EIMS nge-imeyile, ngefeksi okanye ngeposi;
- Ngenisa izimvo ezibhalisiweyo, ubhaliso, okanye izicelo kwi-EIMS nge-imeyile, ngefeksi okanye ngeposi; kunye/okanye
- Ngefowuni.

Kubalulekile ukuqaphele ukuba inkqubo ye-EIA ikhokelwa ngamaxesha amisiweyo amiselwe ngokusemthethweni kwaye ngenxa yoko, ukuze uqinisekise ukubandakanyeka kwakho okuqhubekayo nokubalulekileyo kwiprojekthi, sicela ukuba izicelo zakho zobhaliso kunye nazo naziphi na izimvo zokuqala zingeniswe kwi-EIMS (iinkcukacha zoqhagamshelwano zinikiwe. ngezantsi). Nceda uqaphele ukuba ngaphezu koku kungasentla, onke amaQela Anomdla Nachaphazelekayo abhalisiweyo nawo aya kwaziswa ngexesha elifanelekileyo ngamathuba okuthatha inxaxheba angaphaya, kunye nokufumaneka kweNgxelo yeNgcingane kunye ne-EIA apho izimvo ziya kucelwa khona.

Umntu woQhagamshelwano: Lucien James

Inombolo yesalathisi ye-EIMS : 1570

Idilesi yeposi: PO Box 2083; Pinegowrie 2123

Ifeksi: (086) 571 9047 **Umnxeba:** (011) 789 7170

I-imeyile: block3b4b@eims.co.za

Iwebhusayithi ye-EIMS: <https://www.eims.co.za/public-participation/>

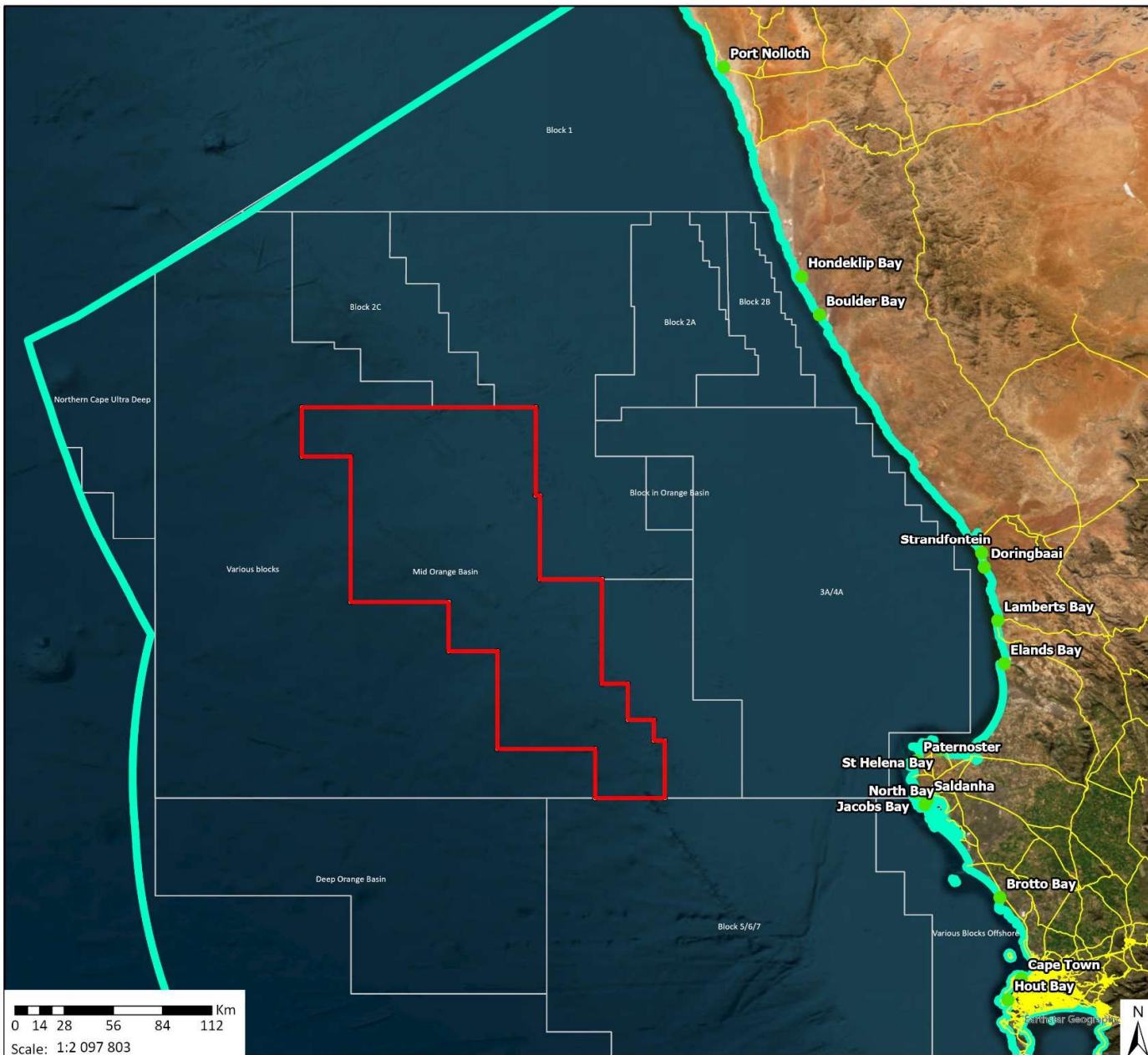
I-datafree: <https://eims.datafree.co/public-participation/>



Iwebhusayithi yeEIMS



EIMS Website Datafree



Locality Map

1570 AOSAC Block 3B4B Exploration EIA

Legend

- Block 3B4B
- Coastal Towns
- Roads
- South African Exclusive Economic Zone
- Offshore Permits Rights

Data Sources:
CSG; ESRI
Coord System: GCS WGS 1984
Datum: WGS 1984
Units: Degree
Ref: 1570_Locality Map_CM_20230329

Date: 2023/03/29
EIMS Ref: 1570
Compiled: CM
Reviewed: GP
Approved: LW

