

NOTIFICATION REGARDING OPPORTUNITY TO PARTICIPATE IN THE ENVIRONMENTAL APPLICATION PROCESSES FOR THE PROPOSED HARMONY NOOITGEDACHT TAILINGS STORAGE FACILITY PROJECT, IN MATHJABENG LOCAL MUNICIPALITY, FREE STATE, SOUTH AFRICA.

Harmony Gold Mining Company Limited (hereafter referred to as the applicant) has appointed Environmental Impact Management Services (Pty) Ltd (EIMS) as the Environmental Assessment Practitioner (EAP) to undertake the necessary environmental authorisation and associated consultation processes. EIMS will compile and submit the required documentation in support of applications for:

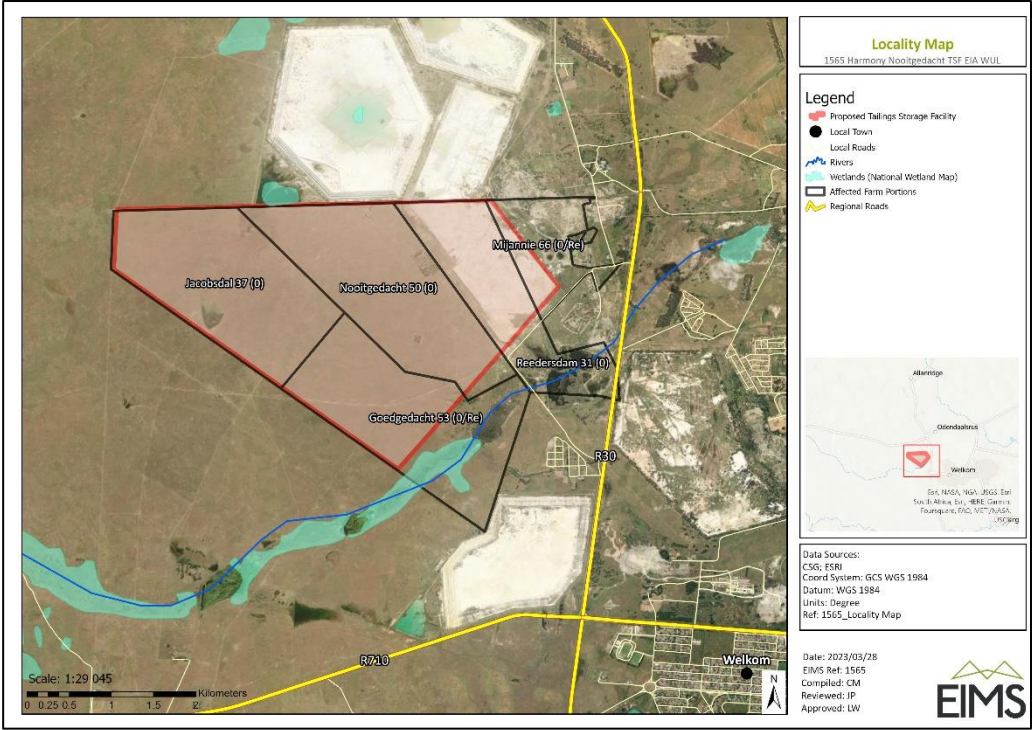
- Integrated Environmental Authorisation (EA) and Waste Management License (WML) in accordance with the National Environmental Management Act – NEMA (Act 107 of 1998)- Listed activity: Listing Notice 2, Activity 15 as well as the National Environmental Management: Waste Act – NEMWA (Act 59 of 2008)- Activity B11; and
- Water Use Licence (WUL) in accordance with the National Water Act – NWA (Act 36 of 1998). Water uses: Section 21 (c), Section 21 (i) and Section 21 (g).

The exact activities to be applied for will be confirmed during the process. Additional activities may be identified during the process. A full Scoping and Environmental Impact Assessment application process will be followed.

The applicant owns and operates a number of Gold Mines and plants in the Welkom region in the Free State and currently deposits tailings onto the Free State South 2 Tailings Storage Facility (TSF), St. Helena 4 TSF, St. Helena 123 TSF, Dam 23 TSF, Brand D TSF and Target 1&2 TSF. The current planned Life of Mine (LOM) of the Free State operations exceed the available deposition capacity of these TSFs and the applicant is therefore proposing to construct the proposed Nooitgedacht TSF to cater for this additional capacity. The TSF will cover an area of approximately 8.95 km². The proposed TSF will be located on Farm portions Mijannie 66 Ptn 0/RE, Goedgedacht 53 Ptn 0, Nooitgedacht 50 Ptn 0, Jacobsdal 37 Ptn 0 and Rheedersdam 31 Ptn 0 (See Map).

As a potential interested and affected party, you are invited to register and comment on the project. In order to ensure that you are identified and registered as an Interested and Affected Party and that your comments are captured, please submit your name, contact details, the reason for your interest or any comments, in writing or telephonically, to EIMS. Please note that only registered I&AP's will be directly informed of future project information and opportunities for participation. In order to avoid missing out on opportunities for public participation please submit I&AP registrations, or any queries, comments, or concerns with regards to this application, as soon as possible to EIMS.

KENNISGEWING MET BETREKKING TOT GELEENTHEID OM AAN DIE OMGEWINGSAANSOEKPROSESSE TE NEEM TE NEEM VIR DIE VOORGESTELDE HARMONY NOOITGEDACHT TAILINGS STORINGSFASILITEITSPROJEK, IN MATHJABENG PLAASLIKE MUNISIPALITEIT, VRYSTAAT, SUID-AFRIKA.



Harmony Gold Mining Company Limited (hierna na verwys as die aansoeker) het Environmental Impact Management Services (Edms) Bpk (EIMS) as die Omgewingsevalueringspraktisyn (EAP) aangestel om die nodige omgewingsmagtiging en gepaardgaande konsultasieprosesse te onderneem. EIMS sal die vereiste dokumentasie saamstel en indien ter ondersteuning van aansoeke vir:

- Geïntegreerde Omgewingsmagtiging (EA) en Afvalbestuurslisensie (WML) in ooreenstemming met die Nasionale Omgewingsbestuurswet – NEMA (Wet 107 van 1998)- Gelyste aktiwiteit: Noteringskennisgewing 2, Aktiwiteit 15 asook die Nasionale Omgewingsbestuur: Afvalwet – NEMWA (Wet 59 van 2008)- Aktiwiteit B11; en
- Watergebruiklisensie (WUL) in ooreenstemming met die Nasionale Waterwet – NWA (Wet 36 van 1998). Watergebruik: Artikel 21 (c), Artikel 21 (i) en Artikel 21 (g).

Die presiese aktiwiteite waarvoor aansoek gedoen moet word, sal tydens die proses bevestig word. Bykomende aktiwiteite kan tydens die proses geïdentifiseer word. 'n Volledige Omvang- en Omgewingsimpakstudie aansoekproses sal gevolg word.

Die applikant besit en bedryf 'n aantal Goudmyne en aanlegte in die Welkom-streek in die Vrystaat en deponeer tans uitskot op die Vrystaat Suid 2 Uitskot Stoorfasiliteit (TSF), St. Helena 4 TSF, St. Helena 123 TSF, Dam 23 TSF, Brand D TSF en Target 1&2 TSF. Die huidige beplande Life of Mine (LOM) van die Vrystaatse bedrywighede oorskry die beskikbare afsettingskapasiteit van hierdie TSF's en die aansoeker stel dus voor om die voorgestelde Nooitgedacht TSF te bou om vir hierdie bykomende kapasiteit voorsiening te maak. Die TSF sal 'n gebied van ongeveer 8,95 km² dek.

Die voorgestelde TSF sal geleë wees op Plaasgedeeltes Mijannie 66 Ptn 0/RE, Goedgedacht 53 Ptn 0, Nooitgedacht 50 Ptn 0, Jacobsdal 37 Ptn 0 en Rheedersdam 31 Ptn 0 (Sien kaart).

As 'n potensiële belanghebbende en geaffekteerde party word u uitgenooi om te registreer en kommentaar te lewer op die projek. Om te verseker dat jy geïdentifiseer en geregistreer word as 'n Belangstellende en Geaffekteerde Party en dat jou kommentaar vasgelê word, dien asseblief jou naam, kontakbesonderhede, die rede vir jou belangstelling of enige kommentaar, skriftelik of telefonies, by EIMS in. Neem asseblief kennis dat slegs geregistreerde B&GP's direk ingelig sal word oor toekomstige projekinligting en geleenthede vir deelname. Om te verhoed dat geleenthede vir publieke deelname misgeloop word, dien asseblief B&GP-registrasies, of enige navrae, kommentaar of bekommernisse met betrekking tot hierdie aansoek, so gou moontlik by EIMS in.

TSEBISO MABAPI LE MONYETLA WA HO NKA KAROLO KOPONG YA MESEBETSI YA TIKOLOHO BAKENG SA PROJEKE E SISINTSWENG YA POLOKELO YA LIKGWERE-KGWERE YA HARMONY NOOITGEDACHT, MMASEPALENG WA LEHAE WA MATHJABENG, FOREISTATA, AFRIKA BORWA.

Harmony Gold Mining Company Limited (yeo ka mor'a mona e bitswang mokopi) e kgethile Environmental Impact Management Services (Pty) Ltd (EIMS) e le Setsebi sa Tekolo ya Tikoloho (EAP) ho etsa tumello e hlokahalang ya tikoloho le ditshebetso tse amanang le yona. EIMS e tla bokella le ho fana ka ditokomane tse hlokahalang ho tshehetsa dikopo bakeng sa:

- Tumello e Kopantsweng ya Tikoloho (EA) le Laesense ya Tsamaiso ya Ditshila (WML) tumellanong le Molao wa Naha wa Tsamaiso wa Tikoloho - NEMA (Molao 107 wa 1998)- Ketsahalo e thathamisitsweng: Tsebisso ya Lethathamo ya 2, mosebetsi wa 15 hammoho le Taolo ya Naha ya Tikoloho: Molao wa Ditshila - NEMWA (Molao 59 wa 2008)- Ketsahalo ya B11; le
- License ya Tshebediso ya Metsi (WUL) tumellanong le Molao wa Naha wa Metsi - NWA (Molao wa 36 wa 1998). Mosebetsi ya metsi: Karolo ya 21 (c), Karolo ya 21 (i) le Karolo ya 21 (g).

Mosebetsi e tobileng e tla etswa e tla netefatswa nakong ya tshebetso. Mosebetsi e meng e eketsehileng e tla bonahala hantle nakong ya tshebetso. Ho tla latelwa tshebetso e felletseng ya kopo ya Tshebetso ya Tekolo le Tlhahlobo ya Phello ya Tikoloho.

Mokopi o na le, o bile o sebetsa ka Merafo ya Kgauta e mmalwa le ditsi tsa tshebetso tikolohong ya Welkom e Foreisetata mme hajwale o qhalla dikgwere-kgwere dibakeng tsa pokello ya dikgwere-kgwere tsa Free State South 2(TSF), St. Helena 4 TSF, St. Helena 123 TSF, Dam. 23 TSF, Brand D TSF le Target 1&2 TSF. Morero o seng o entswe hajwale o lekanyetsang hore naa Morafo o tla Sebetsa Nako e Kae (LOM) tshebetsong ya Foreistata o feta bokgoni bo teng ba di-TSF tsena ba ho bokella dikgwere-kgwere, kahoo mokopi o sisinya ho aha Nooitgedacht TSF e sisintsweng e le tlatsetso ho kwala sekgeo sena. . TSF e tla akaretsa sebaka se ka bang 8.95 km². TSF e sisintsweng e tla fumaneha dikarolong tsa polasi Mijannie 66 Ptn 0/RE, Goedgedacht 53 Ptn 0, Nooitgedacht 50 Ptn 0, Jacobsdal 37 Ptn 0 le Rheedersdam 31 Ptn 0 (Bona Mmapa).

Jwaloka motho ya ka nnang a ba le thahasello le ya ka nnang a ameha, o memelwa ho ngodisa le ho fana ka maikutlo mabapi le morero. E le ho etsa bonnete ba hore o a tsejwa mme o ngodisitswe o le motho ya Thahasellang le ya Amehileng le hore maikutlo a hao a nkuwe, ka kopo romela lebitso la hao, dintlha tsa ho ikopanye le wena, lebaka la thahasello ya hao kapa maikutlo afe kapa afe, ka lengolo kapa ka mohala, ho EIMS. Ka kopo ela hloko hore ke di-I&AP tse ngodisitsweng feela tse tla tsebiswa ka kotloloho ka tlhahiso-leseding ya bokamoso ba projeke le menyetla ya ho nka karolo. E le ho qoba ho fetwa ke menyetla ya ho nka karolo ha sechaba ka kopo, romella boingodiso ba I&AP, kapa dipotso, maikutlo, kapa matshwenyeho mabapi le kopo ena, kapele kamoo ho ka kgonehang ho EIMS.

Contact Person/ Kontak Persoon/ Umntu woqhakamshelwano: Lucien James

Fax/ Faks/ Fax: (086) 571 9047

EIMS Reference Number/ EIMS Verwysingsnommer/ Inombolo yesalathisi ye-EIMS: 1565

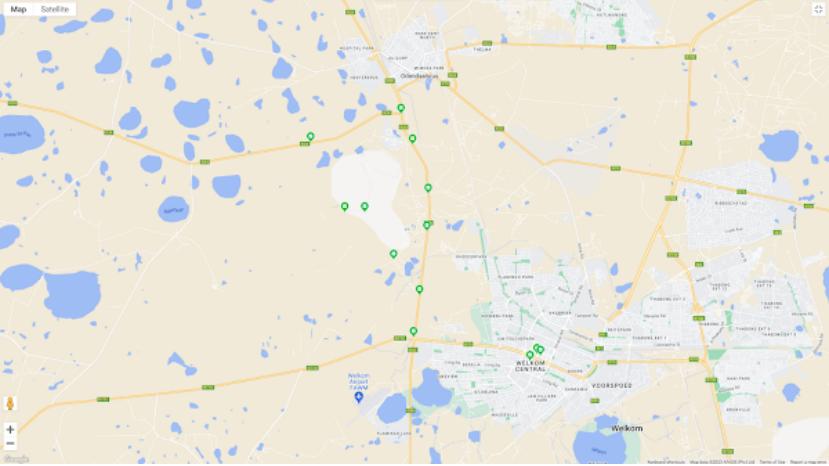
E-mail/ E-pos/ I-imeyile: nooitgedacht@eims.co.za

Postal Address/ Posadres/ Idilesi Yeposi : P.O. Box 2083; Pinegowrie 2123

Telephone/ Telefoon/ Umnxeba: (011) 789 7170



Locality Map:



A3 Notice: 03/05/2023 10:50:45; GPS Coordinates: -27.981218, 26.734644



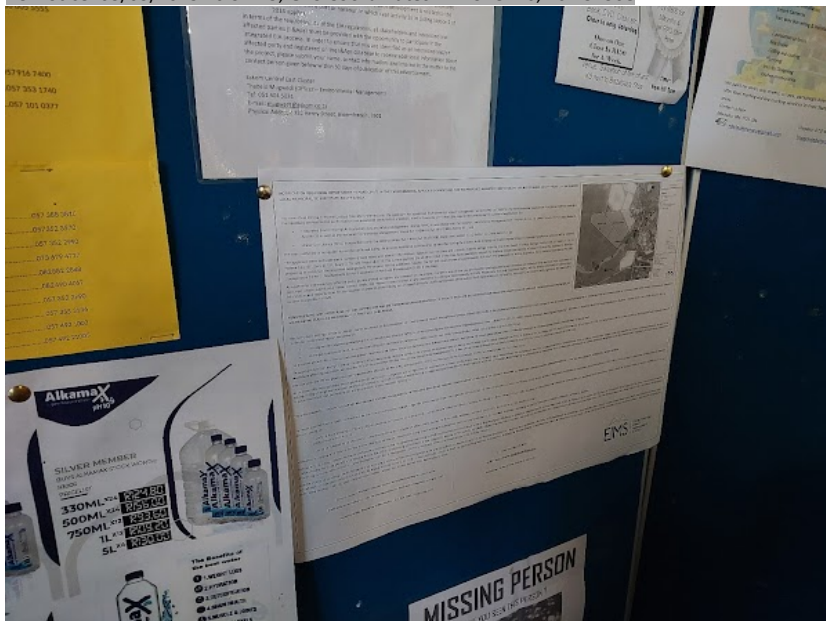
Post office notice

A3 Notice: 03/05/2023 10:51:38; GPS Coordinates: -27.979399, 26.738785



Municipality notice

A3 Notice: 03/05/2023 10:52:13; GPS Coordinates: -27.978726, 26.737508

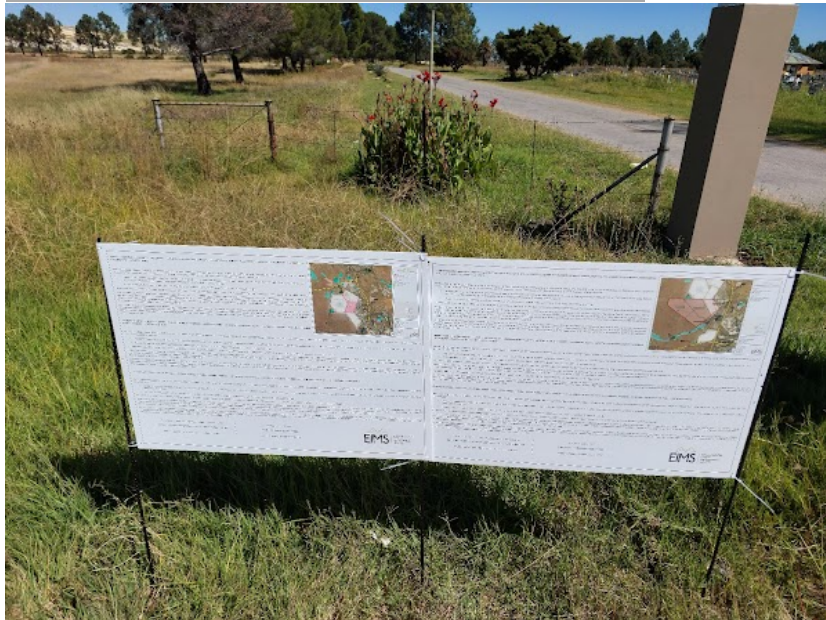


Site Notice: 05/04/2023 15:05:53; GPS Coordinates: -27.972939, 26.688219



Site Notice 1

Site Notice: 05/04/2023 15:09:55; GPS Coordinates: -27.958118, 26.690526



Site Notice 2

Site Notice: 05/04/2023 16:19:28; GPS Coordinates: -27.935661, 26.693573



Site notice 3

Site Notice: 05/04/2023 16:20:20; GPS Coordinates: -27.922495, 26.694002



Site notice 4

Site Notice: 05/04/2023 16:20:48; GPS Coordinates: -27.905295, 26.687848



Site notice 5

Site Notice: 05/04/2023 16:21:40; GPS Coordinates: -27.904484, 26.647418



Site notice 6

Site Notice: 05/04/2023 16:22:36; GPS Coordinates: -27.945769, 26.680340



Site notice 7

Site Notice: 05/04/2023 16:23:14; GPS Coordinates: -27.928999, 26.668781



Site notice 8

Site Notice: 05/04/2023 16:23:55; GPS Coordinates: -27.929056, 26.660960



site notice 9

Site Notice: 05/04/2023 16:31:35; GPS Coordinates: -27.894464, 26.683154



Site notice 10