

Locality Map

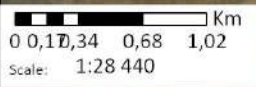
1542 Harmony Mispah TSF Reclam and Pipelines EIA WULA

- Places
- Roads
- Rivers
- Name
- Reclamation Pipelines
- Sewage Pipeline
- Potable Water Pipeline



Data Sources:
 CSG; ESRI
 Coord System: GCS WGS 1984
 Datum: WGS 1984
 Units: Degree
 Ref: 1542_Locality Map_Update

Date: 2022/11/10
 EIMS Ref: 1542
 Compiled: CM
 Reviewed: JP
 Approved: LW

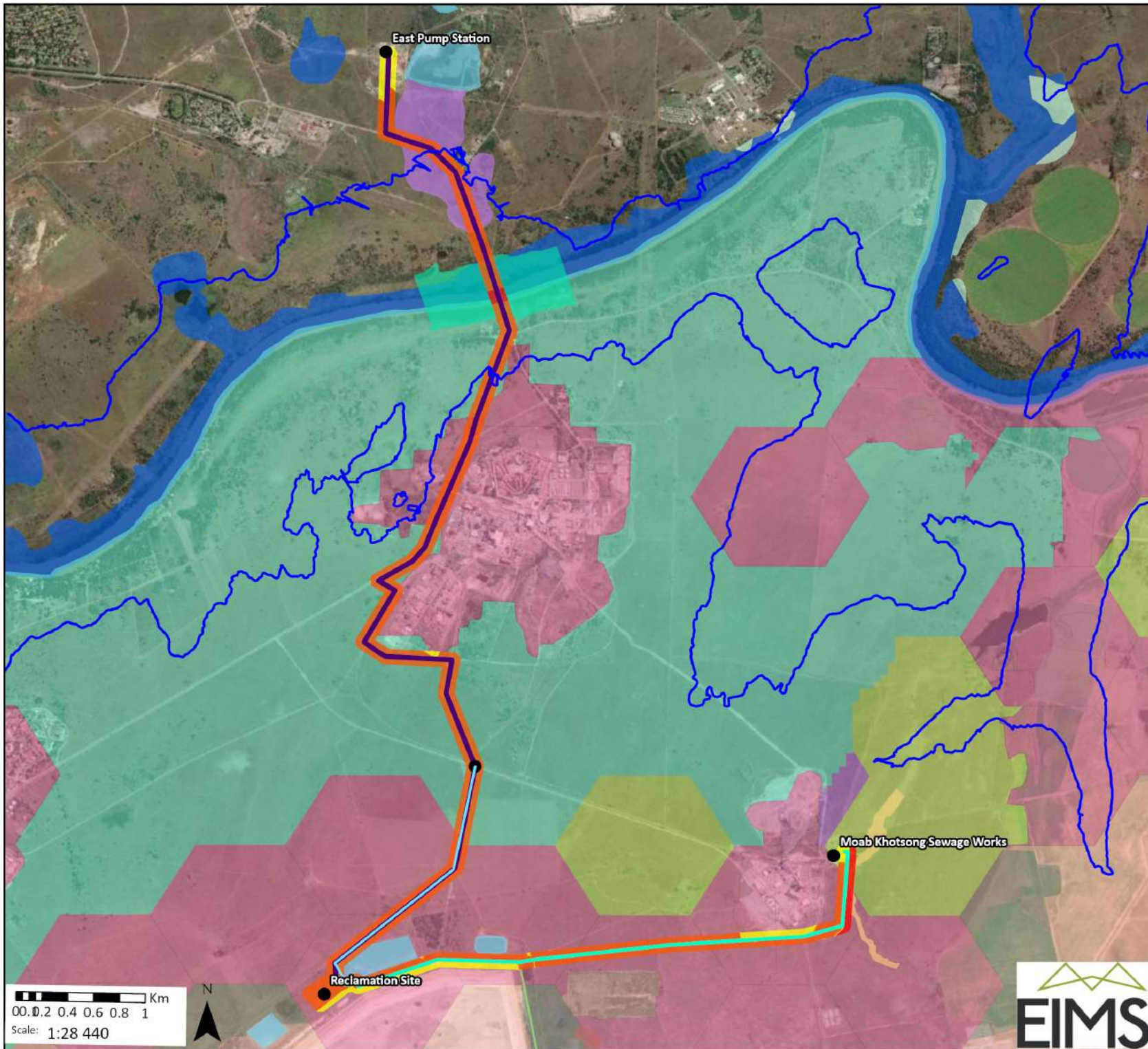


Consolidated Sensitivity Map

1542 Harmony Mispah TSF Reclam and Pipelines EIA WULA

Legend

- 1:100 year floodline
- Places
- Harmony TFS Reclamation and pipelines
 - Potable tie-off
 - Reclamation Pipeline
 - Sewage Pipeline
- Delineated Wetlands
 - Artificial
 - Drain
 - Unchannelled Valley Bottom (HGM 1)
PES: D- Largely Modified
Ecological Services: Intermediate
 - River (HGM 2)
PES: D- Largely Modified
Ecological Services: Moderately High
 - Unchannelled Valley Bottom (HGM 3)
PES: D- Seriously Modified
Ecological Services: Intermediate
 - Depressions (HGM 4)
PES: D- Moderately Modified
Ecological Services: Moderately High
- Aquatic Biodiveristy
 - Ecological Support Area 1
 - Ecological Support Area 2
- Terrestrial Biodiversity
 - CBA1
 - CBA2
 - Degraded
 - ESA1
 - ESA2
 - Other
- Terrestrail Biodiversity Sensitivity Sensitivity Ranking
 - Low
 - Medium
 - High
 - No-Go



0 0.2 0.4 0.6 0.8 1 Km
Scale: 1:28 440



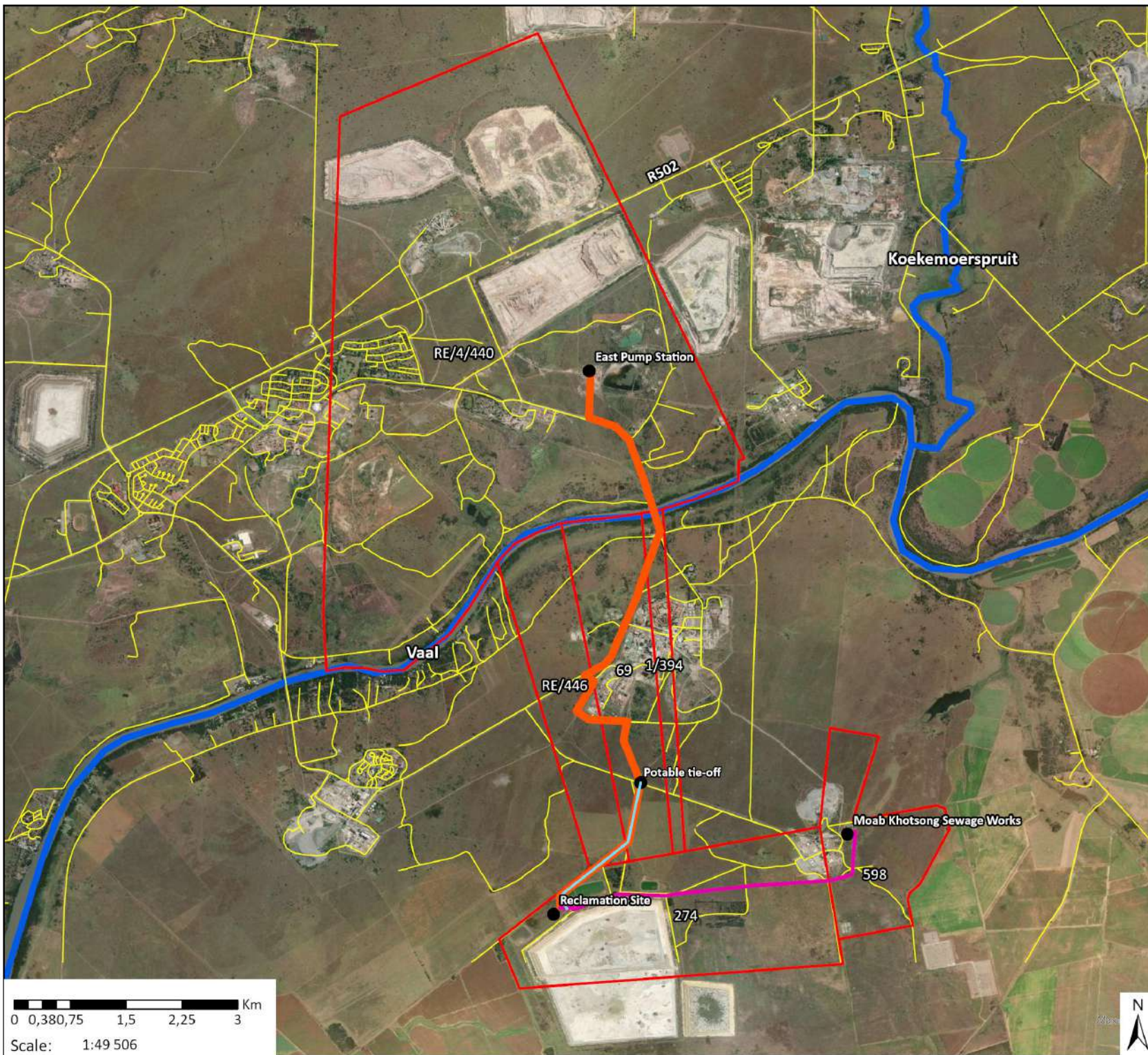
| | |
|---|------------------|
| Data Sources: CSG; ESRI | Date: 2023/03/03 |
| Coord System: GCS WGS 1984 | EIMS Ref: 1542 |
| Datum: WGS 1984 | Compiled: CM |
| Units: Degree | Reviewed: AM |
| Ref: 1542_Combined Sensitivity 20230303 | Approved: LW |

Property Map

1542 Harmony Mispah TSF Reclam and
Pipelines EIA WULA

Legend

- Places
- Roads
- Rivers
- Name
- Reclamation Pipeline
- Sewage Pipeline
- Potable Water Pipeline
- Directly Affected Properties



Data Sources:
CSG; ESRI
Coord System: GCS WGS 1984
Datum: WGS 1984
Units: Degree
Ref: 1542_Property Map

Date: 2022/11/11
EIMS Ref: 1542
Compiled: CM
Reviewed: JP
Approved: LW

