



### 5. Site Photos

132kV Powerline Start: 13/09/2022 09:49:00; **GPS Coordinates:** -28.127931, 26.723724



**N**



**NE**



**E**



**SE**



**SW**



**W**

132kV Alternative 1 surroundings: 13/09/2022 09:53:59; **GPS Coordinates:** -28.131054, 26.725546



N



NE



E



S



SW



W



NW

132kV Alternative 2: 13/09/2022 09:55:33; GPS Coordinates: -28.131199, 26.725355



N



NE



E



SE





S



SW



W



NW

132kV Alternative 1: 13/09/2022 09:56:10; GPS Coordinates: -28.135328, 26.727722



N



NE



E



SE



S



SW



W



NW

132kV Alternative 2: 13/09/2022 09:57:00; GPS Coordinates: -28.135594, 26.727667





N



NE



E



SE



S



SW – Existing powerline pylon and animal grazing



W



NW

132kV Alternative 1: 13/09/2022 10:00:08; GPS Coordinates: -28.142211, 26.732120



N



NE



E – Cultivated agricultural land with a pivot irrigation system



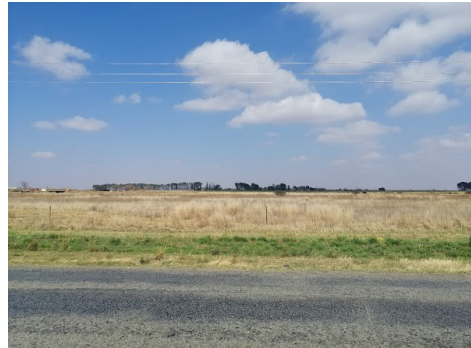




S



SW



W



NW

132kV Alternative 2: 13/09/2022 10:01:38; GPS Coordinates: -28.142350, 26.732061



N



NE



E



SE



S – Farmstead located within proposed corridor



SW



W



NW

132kV Alternative 1: 13/09/2022 10:05:38; GPS Coordinates: -28.146938, 26.736463





N



NE



E



SE



S



SW



W



NW

132kV Alternative 2: 13/09/2022 10:06:27; GPS Coordinates: -28.147004, 26.736198



N



NE



E



SE





S



SW – Existing powerline pylon



W – Tetra4 Gas pipeline servitude



NW – Wetland to be confirmed by a wetland delineation.

132kV Alternative 1: 13/09/2022 10:08:20; GPS Coordinates: -28.151501, 26.740686



N



NE



E



SE



S



SW



W



NW

132kV Alternative 2: 13/09/2022 10:10:00; GPS Coordinates: -28.151605, 26.740504





N



NE



E



SE



S



SW



W



NW

132kV Alternative 1 Bosluisspruit river crossing: 13/09/2022 10:13:13; GPS Coordinates: -28.155773, 26.744488



N



NE



E



SE





SW



W



NW

132kV Alternative 1 Bosluisspruit river crossing : 13/09/2022 10:15:00; GPS Coordinates: -28.155763, 26.744373



N



NE



E



SE



S



SW



W



NW

132kV Alternative 1: 13/09/2022 10:19:59; GPS Coordinates: -28.156195, 26.744934





N



NE



E



SE



S



SW



W



NW

132kV Alternative 2: 13/09/2022 10:20:57; GPS Coordinates: -28.156248, 26.744811



N



NE



E



SE





S



SW



W



NW

132kV Alternative 1: 13/09/2022 10:22:00; GPS Coordinates: -28.164408, 26.752509



N



NE



E



SE



S



SW – Theseus Oryx 132 kV Powerline.



W



NW

132 kV End: 13/09/2022 10:23:00; GPS Coordinates: -28.164624, 26.752270





N



NE



E



SE



S



SW – The 132 kV LILO is to be connected to the 132 kV powerline spanning across on the image above.



W



NW

33 kV Start: 13/09/2022 10:33:47; GPS Coordinates: -28.185038, 26.734965



N



NE



E



SE





S



SW



W – Tetra4 Compressor Station



NW

33 kV Road Crossing: 13/09/2022 10:37:42; GPS Coordinates: -28.184359, 26.733778



N



NE



E



SE



S – Existing gas pipeline servitude



SW



W



NW

33 kV Stream Crossing: 13/09/2022 10:40:36; GPS Coordinates: -28.183617, 26.732532





N



NE



E – Gas pipeline servitude and Pigging station



SE



S



SW



W



NW

33 kV Mine Trench to end - : 13/09/2022 10:54:43; GPS Coordinates: -28.181666, 26.729124



N



NE



E



SE –





S - Beatrix Mine trench with mine slurry discharge



SW



W



NW - 33 kV powerline to be connected to the existing powerline above