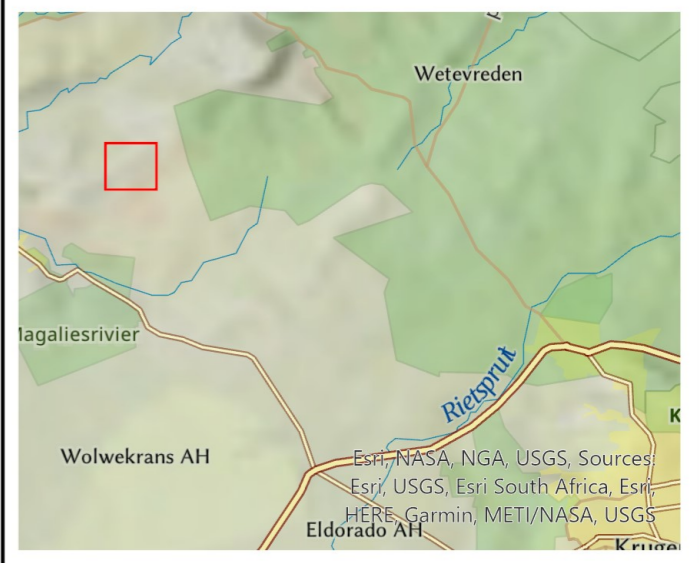


Locality Map

1493 Sterkfontein Waterval Poultry BA

- Legend
- Sterkfontein Poultry
 - Rivers
 - Roads
 - Wetlands
 - Adjacent Farm Portions
 - Poultry Houses
 - Existing Houses
 - New House
 - farmportions



Data Sources:
 CSG; ESRI
 Coord System: GCS WGS 1984
 Datum: WGS 1984
 Units: Degree
 Ref: Locality

Date: 2022/06/23
 EIMS Ref: 1493
 Compiled: CM
 Reviewed: SM
 Approved: LW



Source: Esri, Maxar, Earthstar Geographics, and the GIS User Community

Composite Map

1493 Sterkfontein Waterval Poultry BA

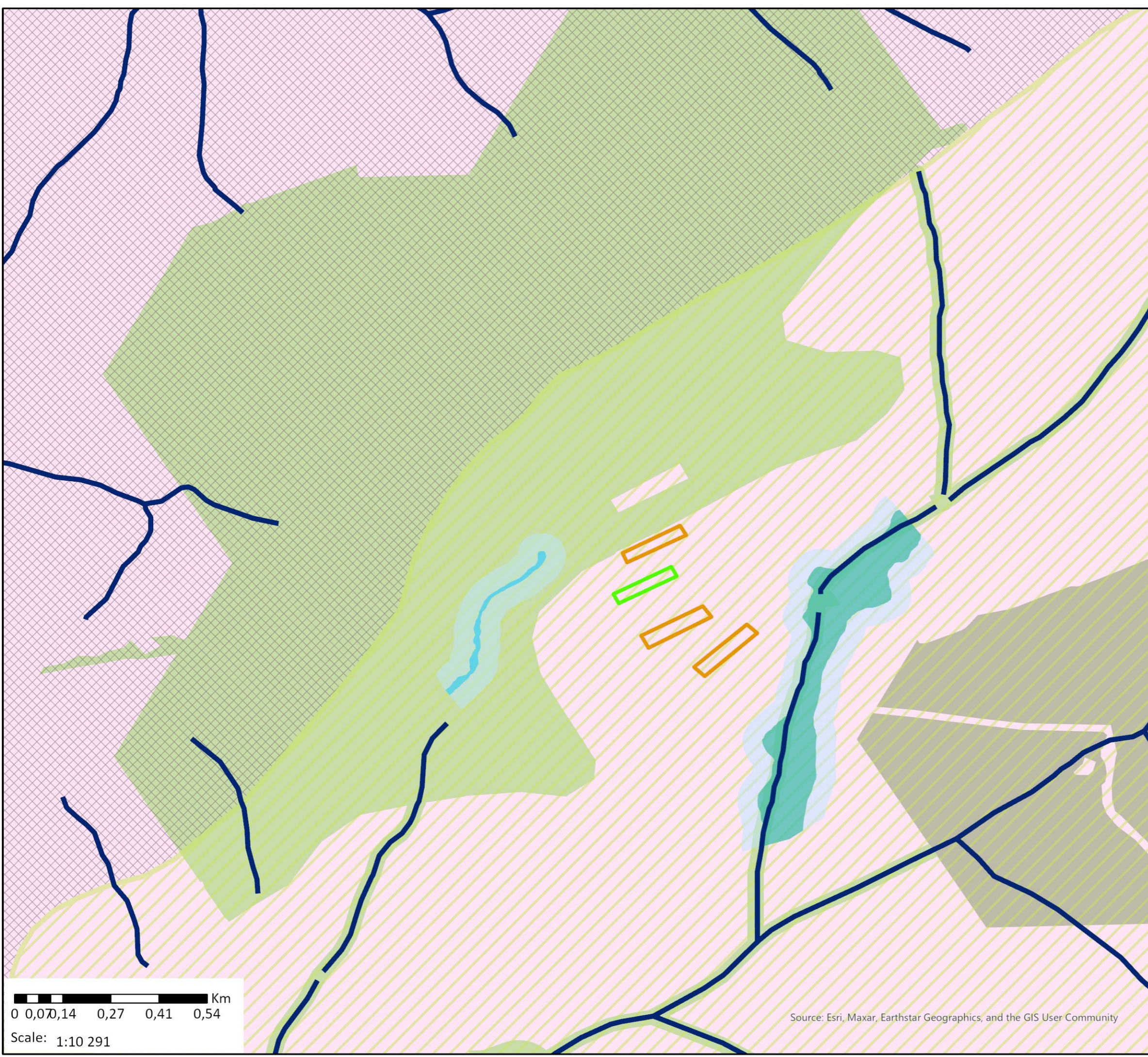
Legend

-  Rivers
-  Magaliesberg Biosphere Reserve
- Vegetation**
 -  Gold Reef Mountain Bushveld;
Conservation Status: Least Threatened
Protection Level: Moderately Protected
 -  Moot Plains Bushveld;
Conservation Status: Vulnerable;
Protection Level: Poorly Protected
- Gauteng Conservation Plan**
 -  Critical Biodiversity Areas
 -  Ecological Support Areas
- Delineated Wetlands**
 -  Drainage Line
 -  Unchanelled Valley Bottom
 -  Delineated Wetlands Buffer (50m)
- Poultry Houses**

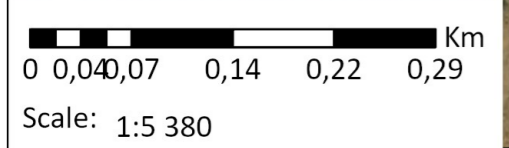
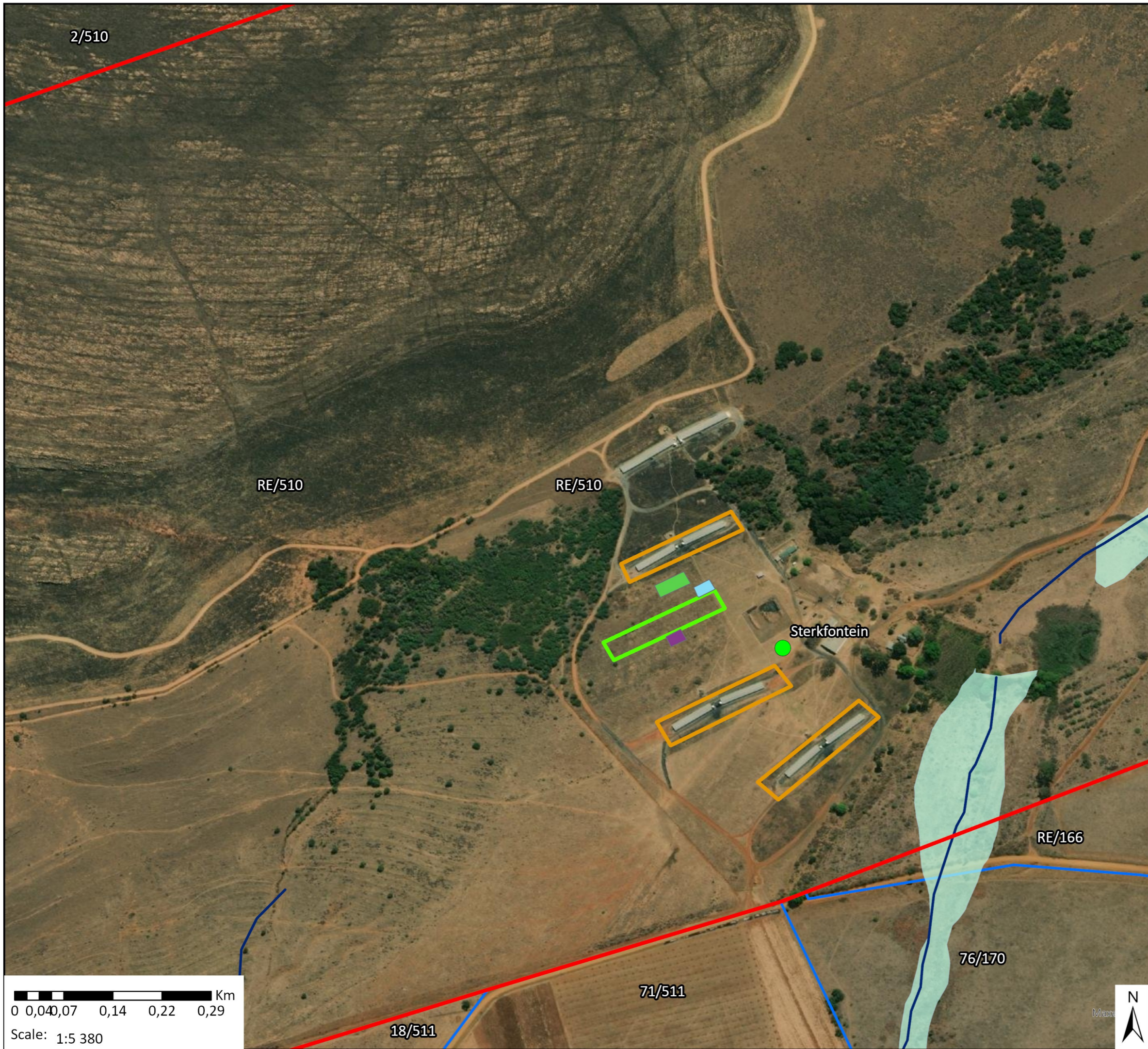
Name
 Existing Houses
 New House

Data Sources:
CSG; ESRI
Coord System: GCS WGS 1984
Datum: WGS 1984
Units: Degree
Ref: Composite Map

Date: 2022/06/08
EIMS Ref: 1493
Compiled: CM
Reviewed: SM
Approved: LW



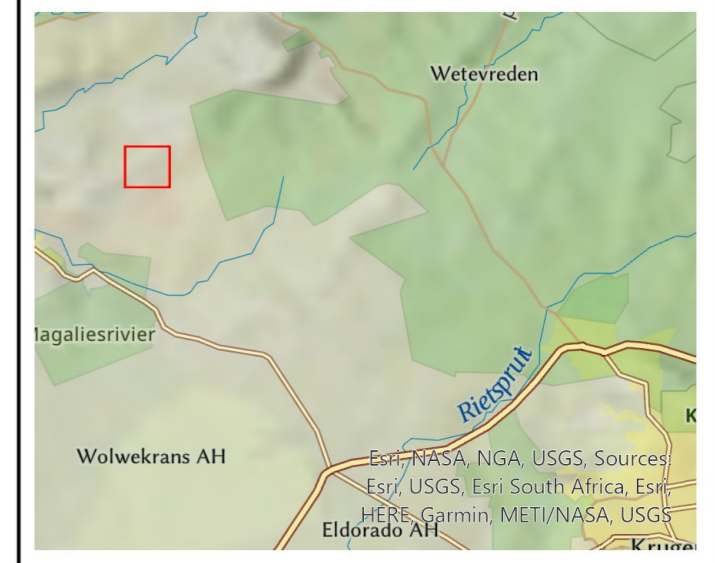
Source: Esri, Maxar, Earthstar Geographics, and the GIS User Community



Site Layout

1493 Sterkfontein Waterval Poultry BA

- Sterkfontein Poultry
- ✂ Directly Affected Property
- ⬜ Adjacent Farm Portions
- ⬜ Wetlands
- ~ Rivers
- Infrastructure
- ⬜ 300kw Boiler
- ⬜ Coal Bunker
- ⬜ Feed Silo
- Poultry Houses
- ⬜ Existing Houses
- ⬜ New House



Data Sources:
 CSG; ESRI
 Coord System: GCS WGS 1984
 Datum: WGS 1984
 Units: Degree
 Ref: Site Layout

Date: 2022/06/09
 EIMS Ref: 1493
 Compiled: CM
 Reviewed: SM
 Approved: LW



Proposed Facility Illustration Plan

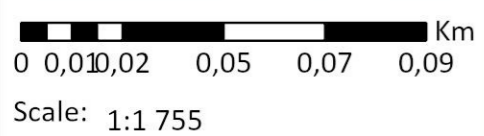
1493 Sterkfontein Waterval Poultry BA

- Sterkfontein Poultry
- ~ Rivers
- ~ Directly Affected Farm
- ~ Wetlands
- Infrastructure
 - 300kw Boiler
 - Coal Bunker
 - Feed Silo
- Poultry Houses
 - ▭ Existing Houses
 - ▭ New House



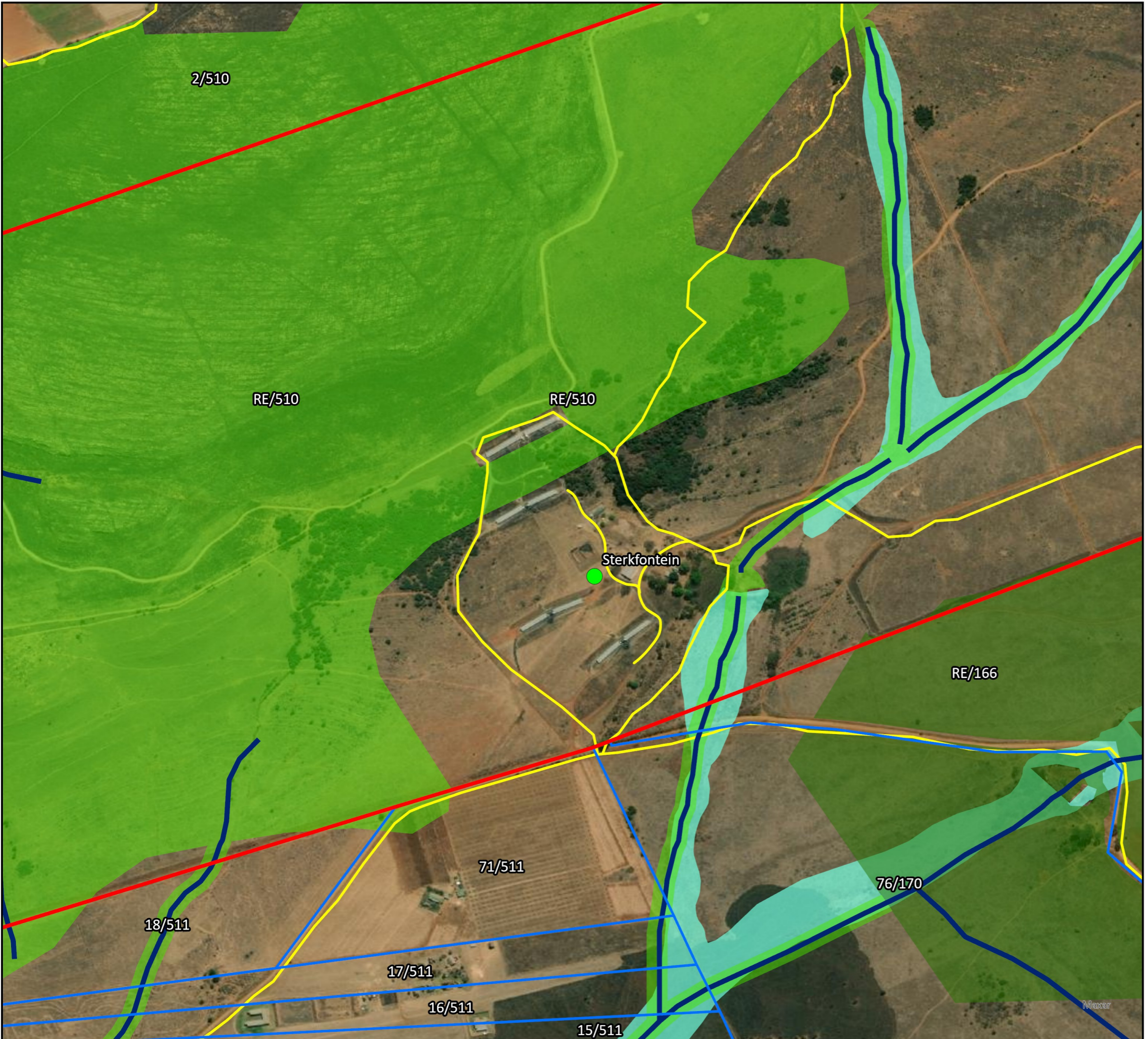
Data Sources:
CSG; ESRI
Coord System: GCS WGS 1984
Datum: WGS 1984
Units: Degree
Ref: Site Layout

Date: 2022/06/08
EIMS Ref: 1493
Compiled: CM
Reviewed: SM
Approved: LW



Source: Esri, Maxar, Earthstar Geographics, and the GIS User Community





Gauteng Conservation Plan

1493 Sterkfontein Waterval Poultry BA

Legend

- Sterkfontein Poultry
- ⬮ Directly Affected Property
- ⬮ Adjacent Farm Portions
- ⬮ Rivers
- ⬮ Roads
- Gauteng Conservation Plan**
- Critical Biodiversity Areas
- Ecological Support Areas
- Wetlands



National Geographic, Esri, Garmin, HERE, UNEP-WCMC, USGS, NASA, ESA, METI, NRCAN, GEBCO, NOAA, increment P Corp.

Data Sources:
 CSG; ESRI
 Coord System: GCS WGS 1984
 Datum: WGS 1984
 Units: Degree
 Ref: Gauteng Conservation Plan

Date: 2022/06/23
 EIMS Ref: 1493
 Compiled: CM
 Reviewed: SM
 Approved: LW

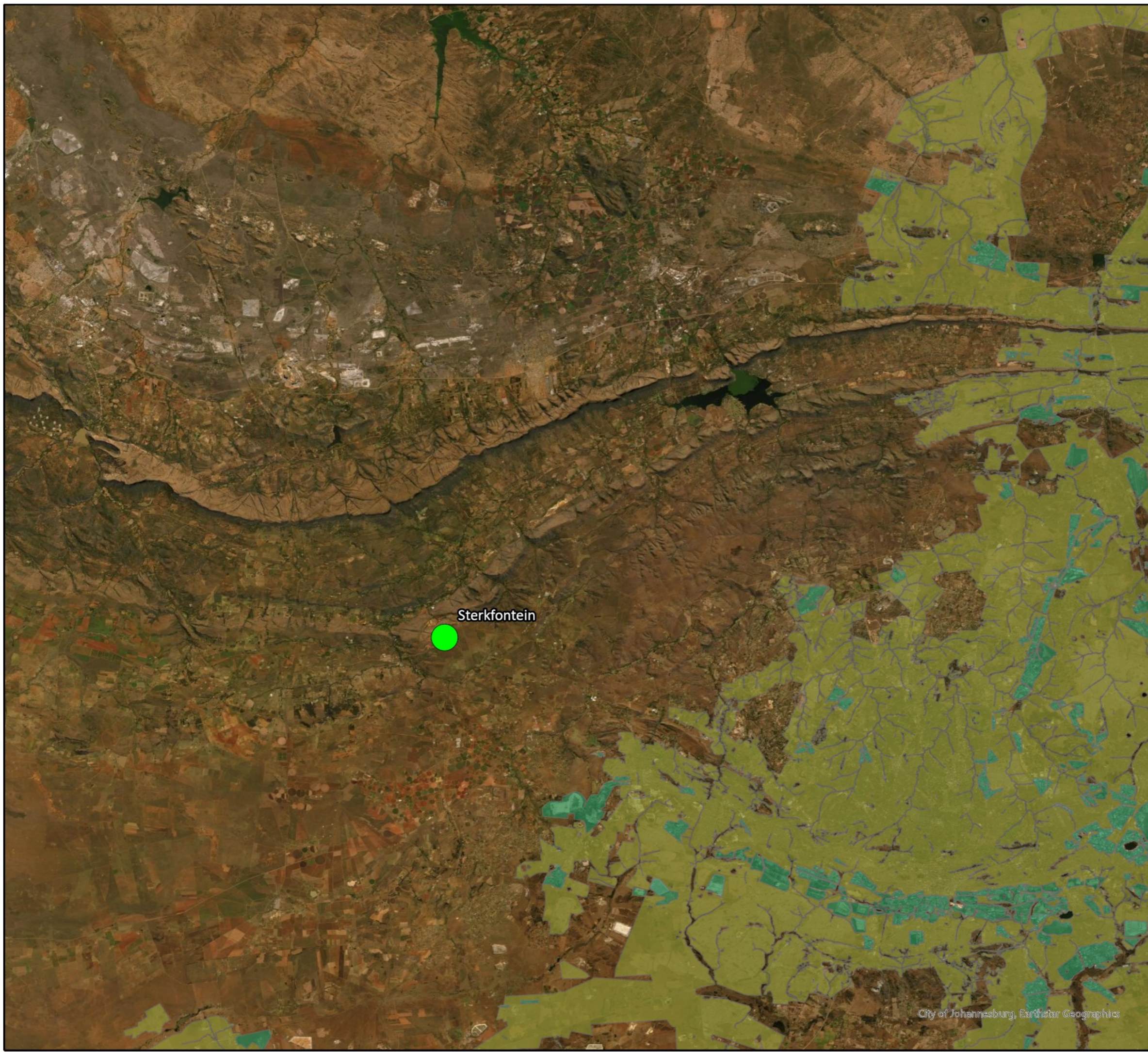


Gauteng Environmental Management Plan

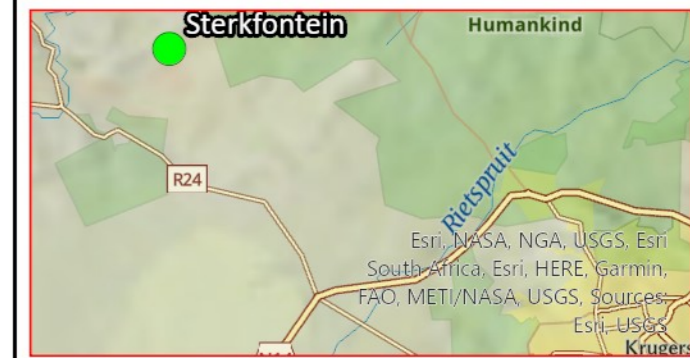
1493 Sterkfontein Waterval Poultry BA

Legend

-  Sterkfontein Poultry
-  Zone 1
-  Zone 5

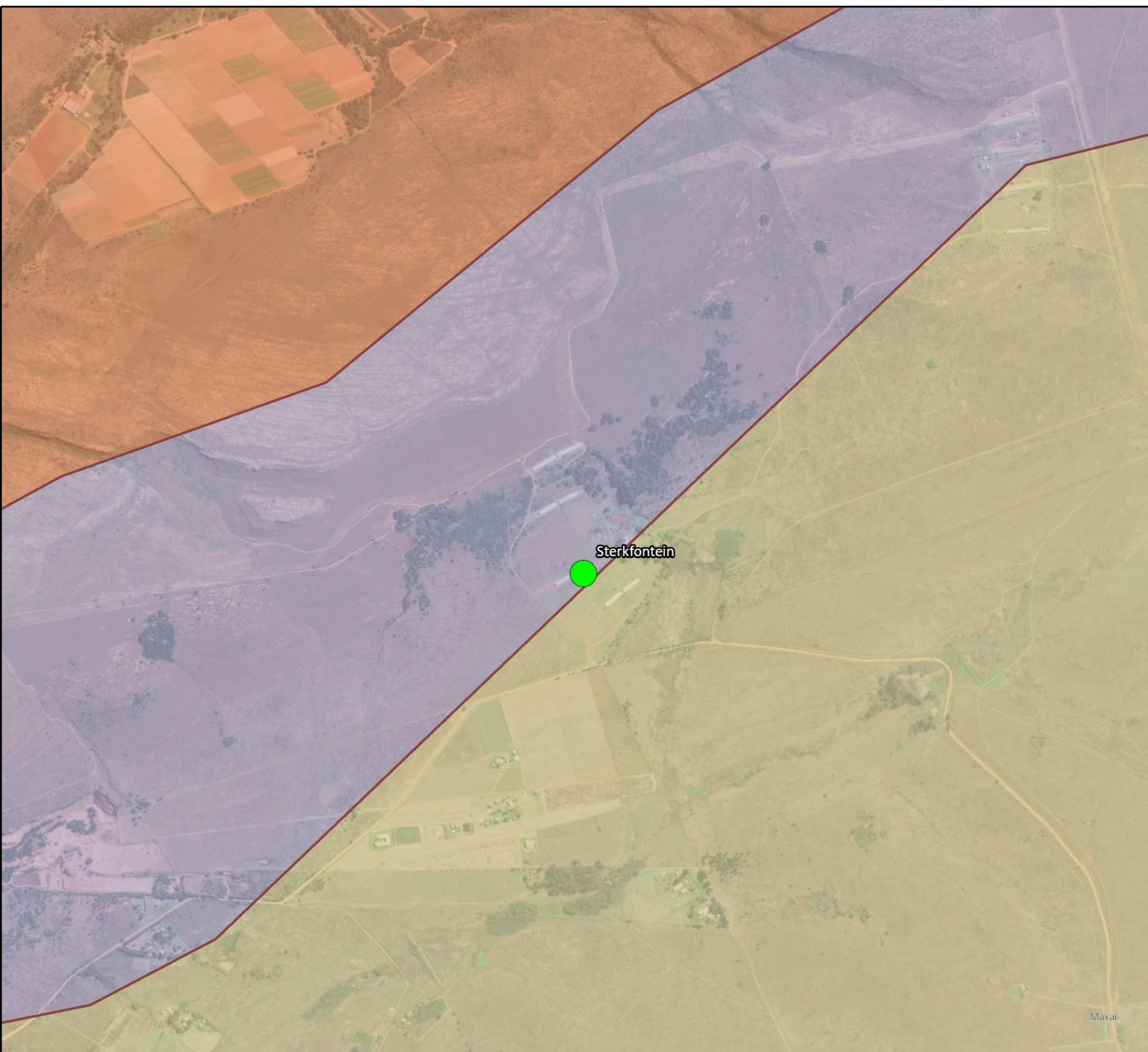


Sterkfontein



Data Sources:
CSG; ESRI
Coord System: GCS WGS 1984
Datum: WGS 1984
Units: Degree
Ref: EMF

Date: 2022/05/05
EIMS Ref: 1493
Compiled: CM
Reviewed: SM
Approved: LW



Simplified Geology

1493 Sterkfontein Waterval Poultry BA

- Legend**
- Sterkfontein Poultry
 - Geological Contacts
- Geology**
- Daspoort
 - Pretoria
 - Strubenkop



Data Sources:
 CSG; ESRI
 Coord System: GCS WGS 1984
 Datum: WGS 1984
 Units: Degree
 Ref: Geology

Date: 2022/05/06
 EIMS Ref: 1493
 Compiled: CM
 Reviewed: SM
 Approved: LW



Maxar

Simplified Landcover


1493 Sterkfontein Waterval Poultry BA

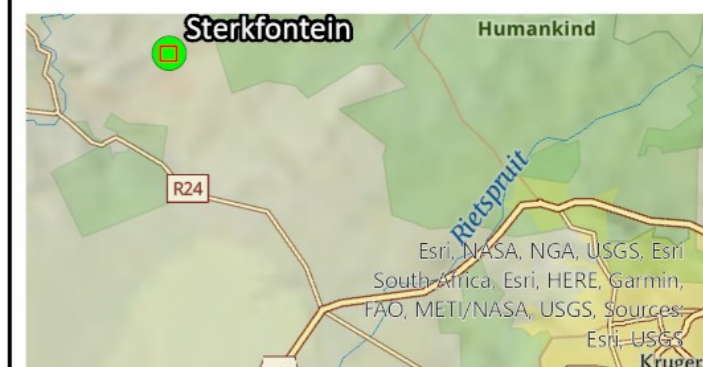
Legend

 Sterkfontein Poultry

SA_NLC_2020_ALBERS_Clip

Class_Name

-  contiguous low forest & thicket
-  dense forest & woodland
-  open woodland
-  contiguous & dense plantation forest
-  open & sparse plantation forest
-  natural grassland
-  cultivated emerging farmer sugarcane non-pivot
-  commercial annual crops rain-fed / dryland
-  fallow land & old fields (bush)
-  fallow land & old fields (grass)
-  residential formal (tree)
-  residential formal (bush)
-  residential formal (low veg / grass)
-  village scattered (bare & low veg/ grass combo)
-  industrial
-  roads & rails (major linear)
-  mines: extraction pits, quarries



Data Sources:

CSG; ESRI
Coord System: GCS WGS 1984
Datum: WGS 1984
Units: Degree
Ref: Landcover

Date: 2022/05/06

EIMS Ref: 1493

Compiled: CM

Reviewed: SM

Approved: LW

Source: Esri, Maxar, Earthstar Geographics, and the GIS User Community



Surface Water Features

1493 Sterkfontein Waterval Poultry BA

Legend

-  Sterkfontein Poultry
-  Rivers
-  Wetlands (National Wetland Map)
-  Wetlands (NFEPA)



Data Sources:

CSG; ESRI
Coord System: GCS WGS 1984
Datum: WGS 1984
Units: Degree
Ref: Surface Water Features

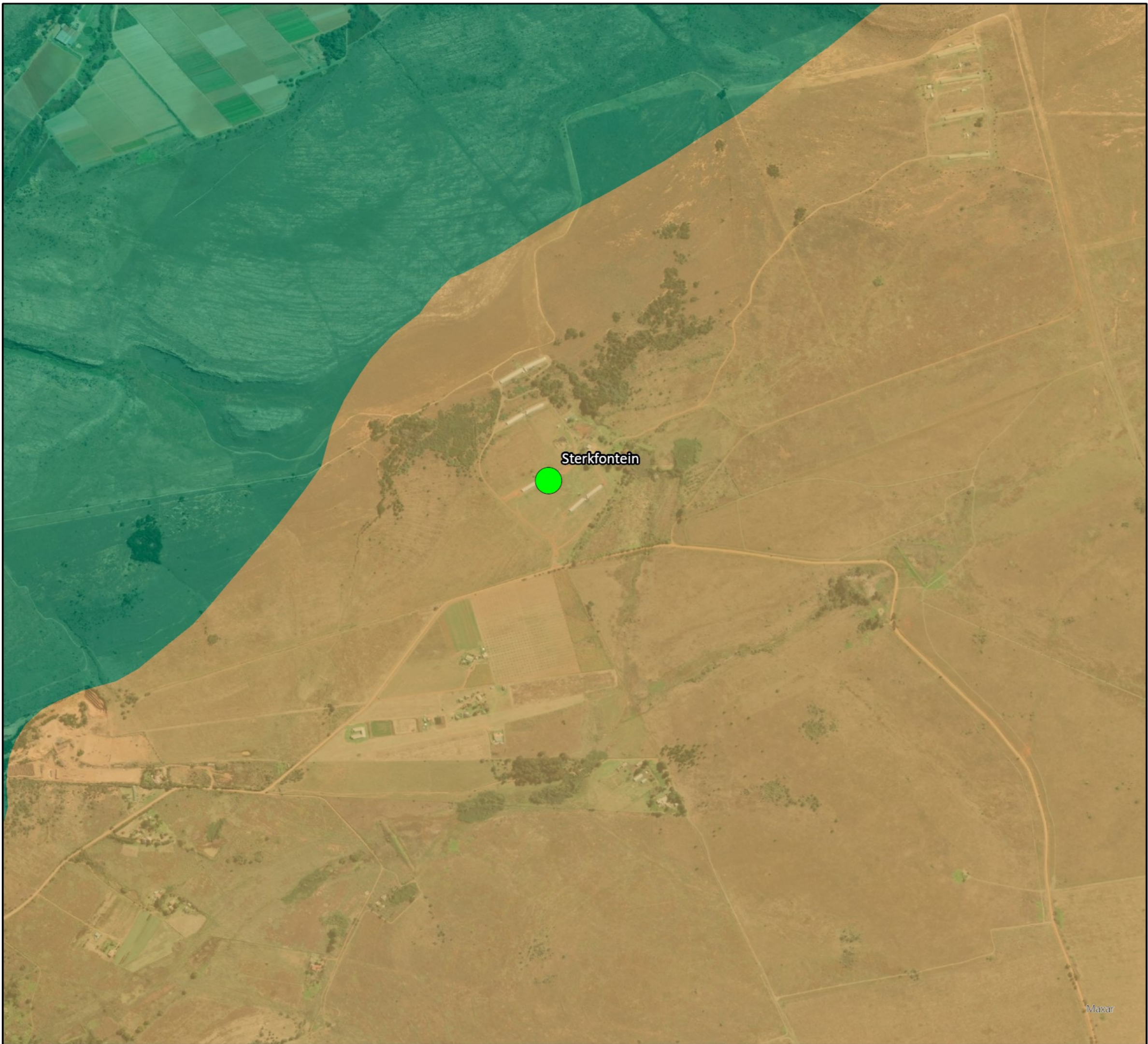
Date: 2022/05/05

EIMS Ref: 1493

Compiled: CM

Reviewed: SM

Approved: LW



Vegetation

1493 Sterkfontein Waterval Poultry BA

Legend

- Sterkfontein Poultry
- Vegetation
- Gold Reef Mountain Bushveld;
Conservation Status: Least Threatened
Protection Level: Moderately Protected
- Moot Plains Bushveld;
Conservation Status: Vulnerable
Protection Level: Poorly Protected



Data Sources:
CSG; ESRI
Coord System: GCS WGS 1984
Datum: WGS 1984
Units: Degree
Ref: Vegetation

Date: 2022/05/05
EIMS Ref: 1493
Compiled: CM
Reviewed: SM
Approved: LW

